

Puerto Rico Department of State Corporations Dashboard

As of December 11 11:59 pm





Estado Libre Asociado de Puerto Rico

Departamento de Estado

Informe estadístico del Registro de Corporaciones

DATA

Annual Report/Dues Comparison

Year	Profit	%	Non-Profit	%	LLC	%	Totals
2013	50223	75%	10212	15%	6233	9%	66668
2012	50532	78%	9729	15%	4915	8%	65176
2011	50298	79%	9709	15%	3457	5%	63464
2010	48843	83%	8682	15%	1533	3%	59058
2009	13752	81%	2446	14%	771	5%	16969
DIFF 13-12	-309	-0.6%	483	4.7%	1318	26.8%	1492
DIFF 12-11	234	0.5%	20	0.2%	1458	42.2%	1712
DIFF 11-10	1455	3.0%	1027	11.8%	1924	125.5%	4406
DIFF 10-09	35091	255.2%	6236	254.9%	762	98.8%	42089

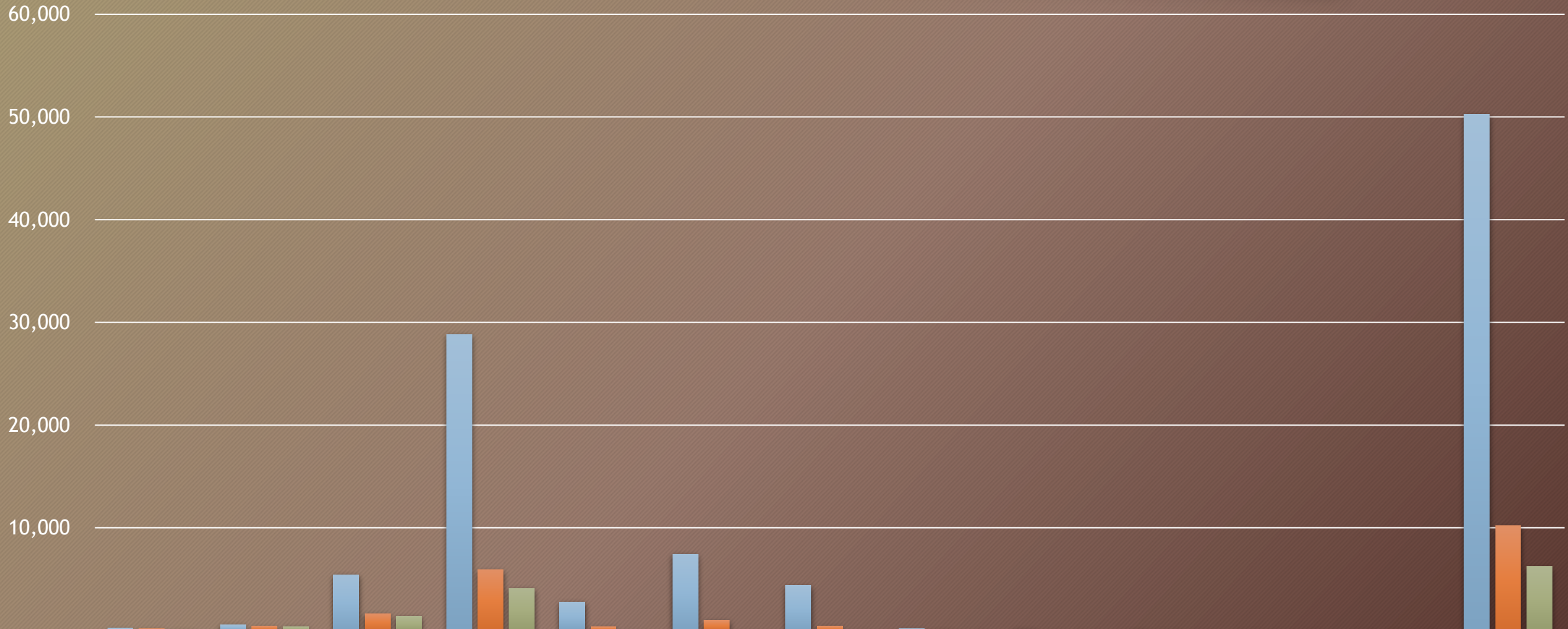
New Creations by Class		Certificates of Good Standing			
Class	%	Year	Online	Paper	Combined
Close Corporation	8.50%	2011	4,609	13,304	17,913
Corporation	67.37%	2012	18,554	5,116	23,670
Limited Liability Company	19.43%	2013	23,187	3,037	26,224
Limited Liability Partnership	0.26%	2014	26,107	2,052	28,159
Professional Corporation	4.39%	Certificates of Existence			
Special Corporation for Municipal Development	0.01%	Year	Online	Paper	Combined
Special Employee Owned Corporation	0.04%	2011	-	2,498	2,498
Sponsored By Municipal Corporation	0.01%	2012	-	1,886	1,886
		2013	4,055	936	4,991
		2014	7,177	168	7,345

Online New Creations				New Creations Comparison (Paper VS Online)			
Month - Year	For Profit	Non-Profit	SubTotal	Month - Year	Paper	Online	Combined
May-11	484	204	688	May-11	1,473	688	2161
Jun-11	748	299	1,047	Jun-11	764	1,047	1811
Jul-11	607	291	898	Jul-11	652	898	1550
Aug-11	640	241	881	Aug-11	488	881	1369
Sep-11	722	325	1,047	Sep-11	523	1,047	1570
Oct-11	728	328	1,056	Oct-11	454	1,056	1510
Nov-11	638	275	913	Nov-11	329	913	1242
Dec-11	598	207	805	Dec-11	267	805	1072
Jan-12	796	341	1,137	Jan-12	202	1,137	1339
Feb-12	795	371	1,166	Feb-12	216	1,166	1382
Mar-12	883	340	1,223	Mar-12	254	1,223	1477
Apr-12	742	318	1,060	Apr-12	247	1,060	1307
May-12	882	311	1,193	May-12	256	1,193	1449
Jun-12	802	314	1,116	Jun-12	189	1,116	1305
Jul-12	662	275	937	Jul-12	141	937	1078
Aug-12	805	307	1,112	Aug-12	143	1,112	1255
Sep-12	770	288	1,058	Sep-12	157	1,058	1215
Oct-12	852	303	1,155	Oct-12	122	1,155	1277
Nov-12	556	211	767	Nov-12	94	767	861
Dec-12	601	232	833	Dec-12	123	833	956
Jan-13	1,027	296	1,323	Jan-13	101	1,323	1424
Feb-13	910	387	1,297	Feb-13	96	1,297	1393
Mar-13	835	342	1,177	Mar-13	111	1,177	1288
Apr-13	879	373	1,252	Apr-13	132	1,252	1384
May-13	893	323	1,216	May-13	133	1,216	1349
Jun-13	784	292	1,076	Jun-13	103	1,076	1179
Jul-13	744	253	997	Jul-13	87	997	1084

Online New Creations				New Creations Comparison (Paper VS Online)			
Month - Year	For Profit	Non-Proft	SubTotal	Month - Year	Paper	Online	Combined
Aug-13	926	318	1,244	Aug-13	111	1,244	1355
Sep-13	761	277	1,038	Sep-13	85	1,038	1123
Oct-13	776	284	1,060	Oct-13	89	1,060	1149
Nov-13	598	219	817	Nov-13	77	817	894
Dec-13	598	188	786	Dec-13	84	786	870
Jan-14	849	301	1,150	Jan-14	107	1,150	1257
Feb-14	774	274	1,048	Feb-14	109	1,048	1157
Mar-14	906	333	1,239	Mar-14	92	1,239	1331
Apr-14	769	319	1,088	Apr-14	72	1,088	1160
May-14	918	293	1,211	May-14	67	1,211	1278
Jun-14	846	265	1,111	Jun-14	89	1,111	1200
Jul-14	737	248	985	Jul-14	49	985	1034
Aug-14	814	264	1,078	Aug-14	81	1,078	1159
Sep-14	850	306	1,156	Sep-14	125	1,156	1281
Oct-14	872	226	1,098	Oct-14	134	1,098	1232
Nov-14	679	199	878	Nov-14	112	878	990
Dec-14	300	81	381	Dec-14	46	381	427

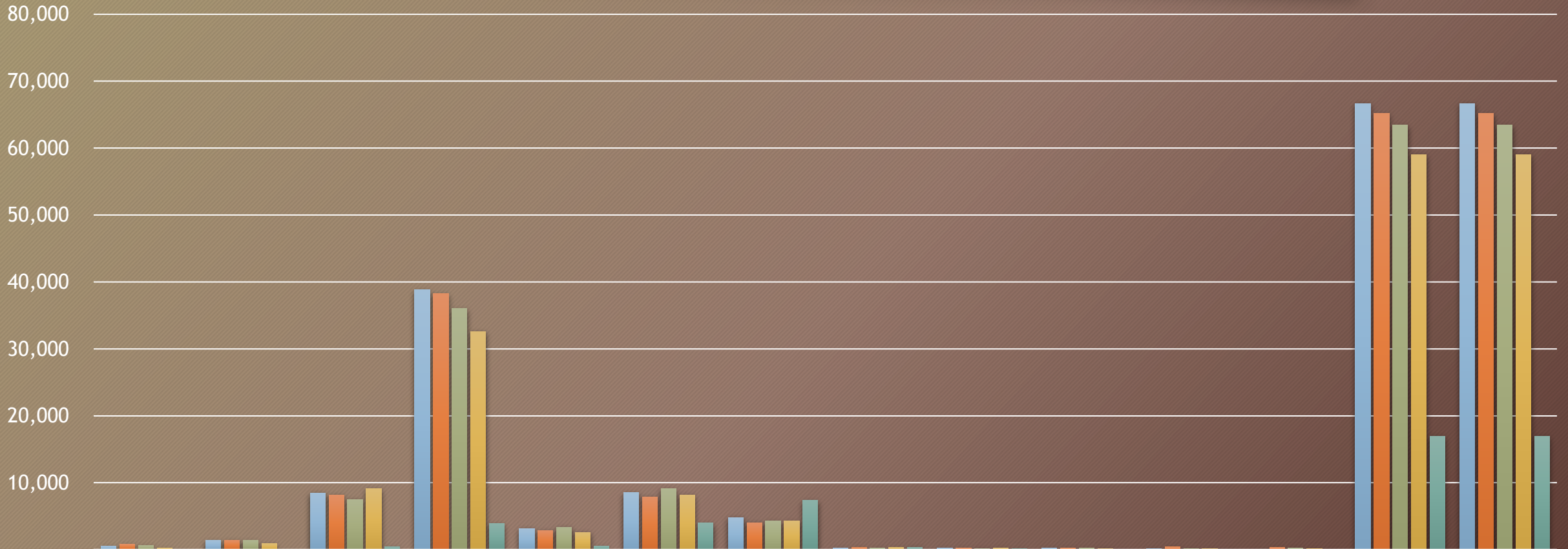
Current Filing Season

2



	January	February	March	April	May	June	July	August	September	October	November	December	Up To Date Totals
■ For-Profit	227	565	5,441	28,843	2,765	7,467	4,381	175	135	110	72	42	50,223
■ Non-Profit	184	425	1,640	5,920	371	991	404	80	59	77	38	23	10,212
■ LLC	107	391	1,399	4,104	58	44	41	22	27	19	15	6	6,233

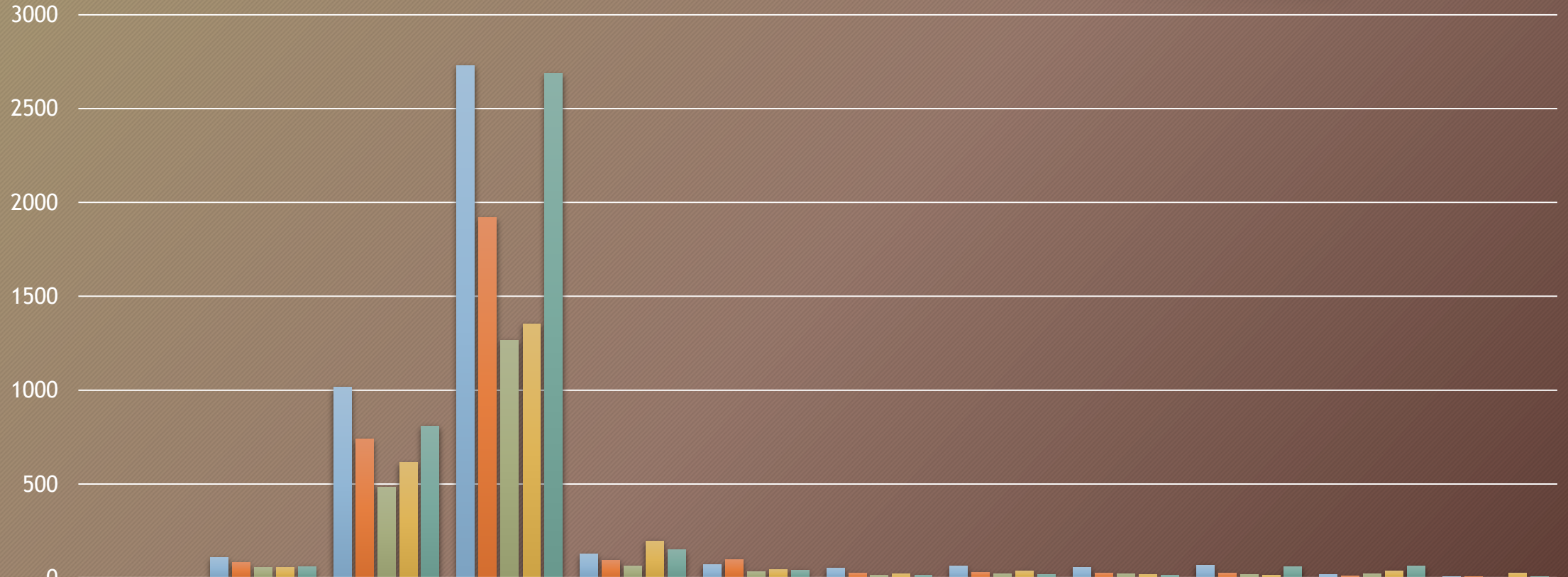
Annual Report/Due 5 Year Comparison



	January	February	March	April	May	June	July	August	September	October	November	December	UpToDate Totals	EndOfYear Totals
■ 2013	518	1,381	8,480	38,867	3,194	8,502	4,826	277	221	206	125	71	66,668	66,668
■ 2012	828	1,420	8,198	38,247	2,886	7,910	4,058	322	291	271	394	351	65,176	65,176
■ 2011	615	1,407	7,520	36,040	3,367	9,122	4,284	280	201	237	117	274	63,464	63,464
■ 2010	261	904	9,099	32,611	2,603	8,175	4,287	335	268	203	174	138	59,058	59,058
■ 2009	1	7	425	3,891	522	3,978	7,396	361	121	66	106	95	16,969	16,969

■ 2013 ■ 2012 ■ 2011 ■ 2010 ■ 2009

Prior Year Filings by Month

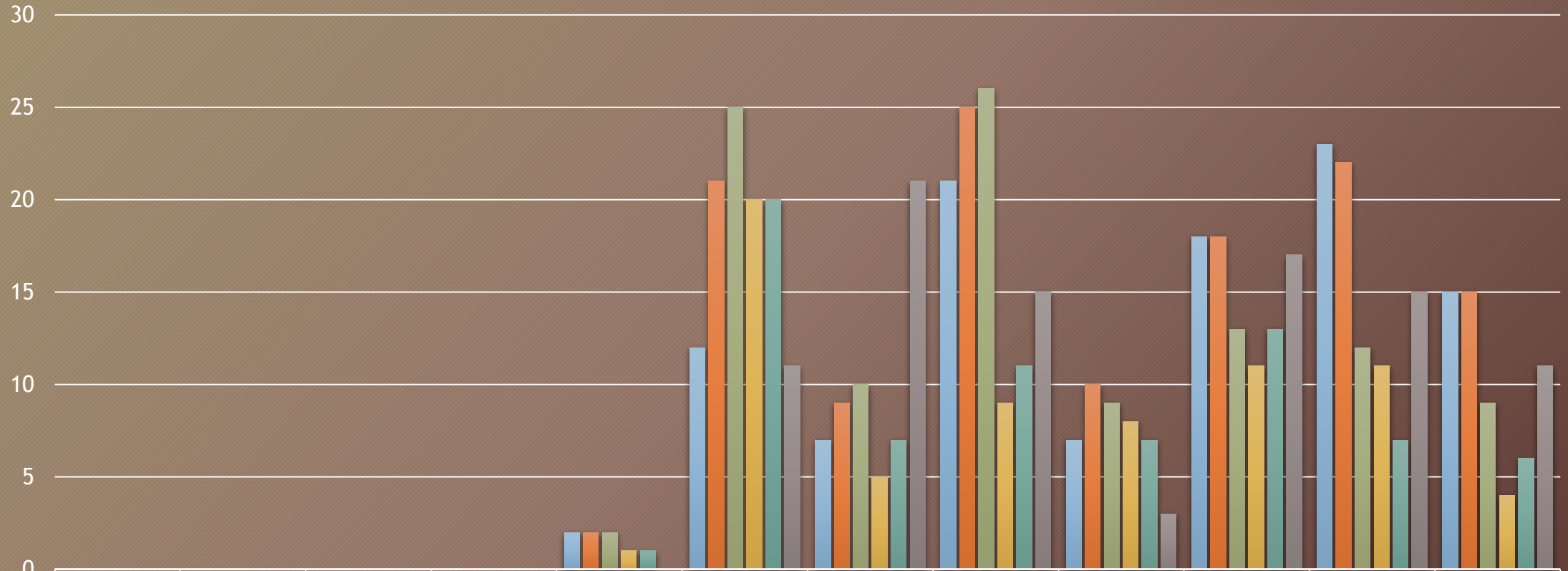


	January	February	March	April	May	June	July	August	September	October	November	December
2012	0	108	1017	2730	128	71	54	63	57	68	17	7
2011	0	82	738	1918	95	98	24	29	26	25	11	6
2010	0	55	484	1267	63	34	14	23	22	18	22	1
2009	0	55	615	1354	196	44	21	37	18	16	37	27
2008 AND OLDER	0	61	810	2686	150	41	16	20	14	60	63	6

2012 2011 2010 2009 2008 AND OLDER

Filings Thru Restoration

5

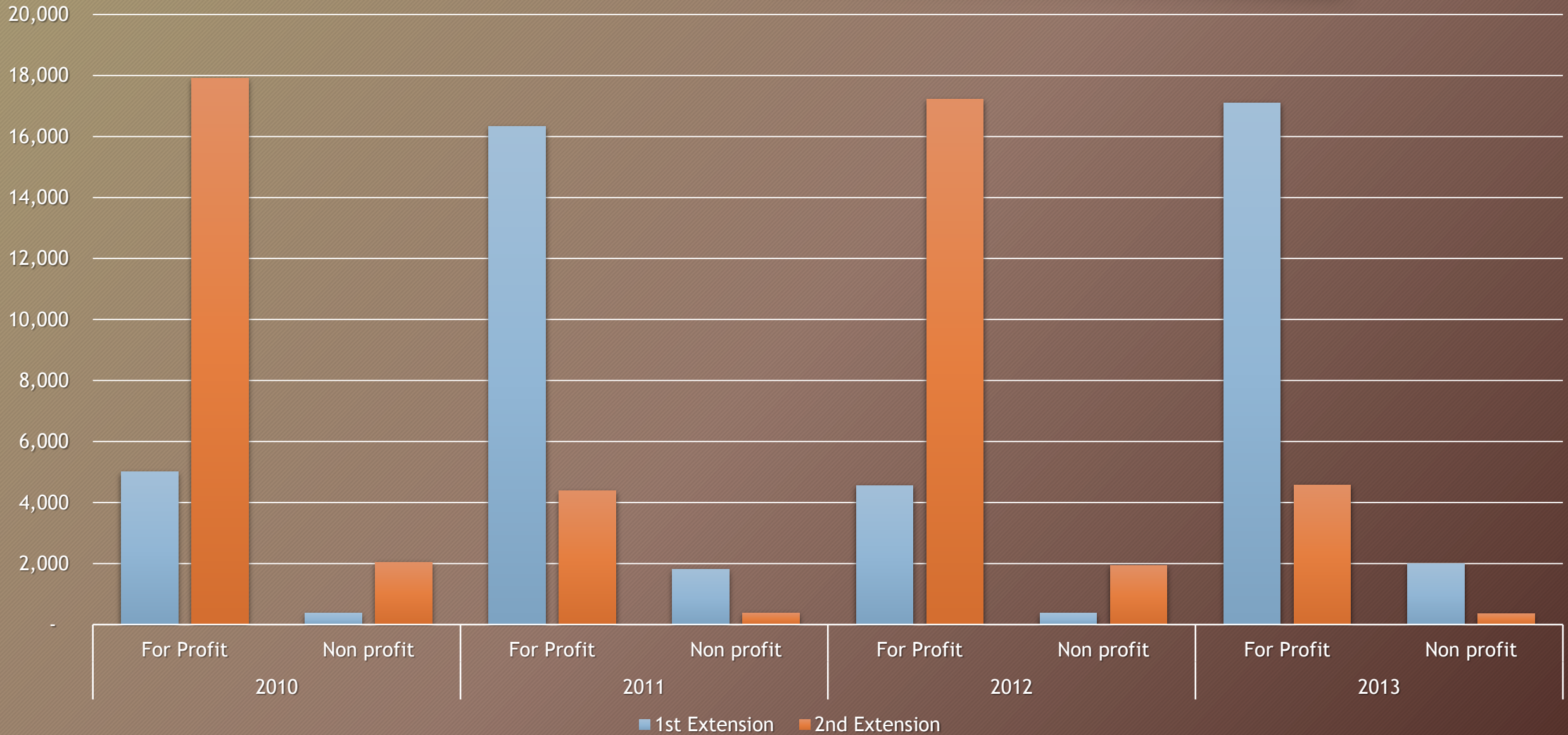


	January	February	March	April	May	June	July	August	September	October	November	December
■ 2013	0	0	0	0	2	12	7	21	7	18	23	15
■ 2012	0	0	0	0	2	21	9	25	10	18	22	15
■ 2011	0	0	0	0	2	25	10	26	9	13	12	9
■ 2010	0	0	0	0	1	20	5	9	8	11	11	4
■ 2009	0	0	0	0	1	20	7	11	7	13	7	6
■ 2008 AND OLDER	0	0	0	0	0	11	21	15	3	17	15	11

■ 2013 ■ 2012 ■ 2011 ■ 2010 ■ 2009 ■ 2008 AND OLDER

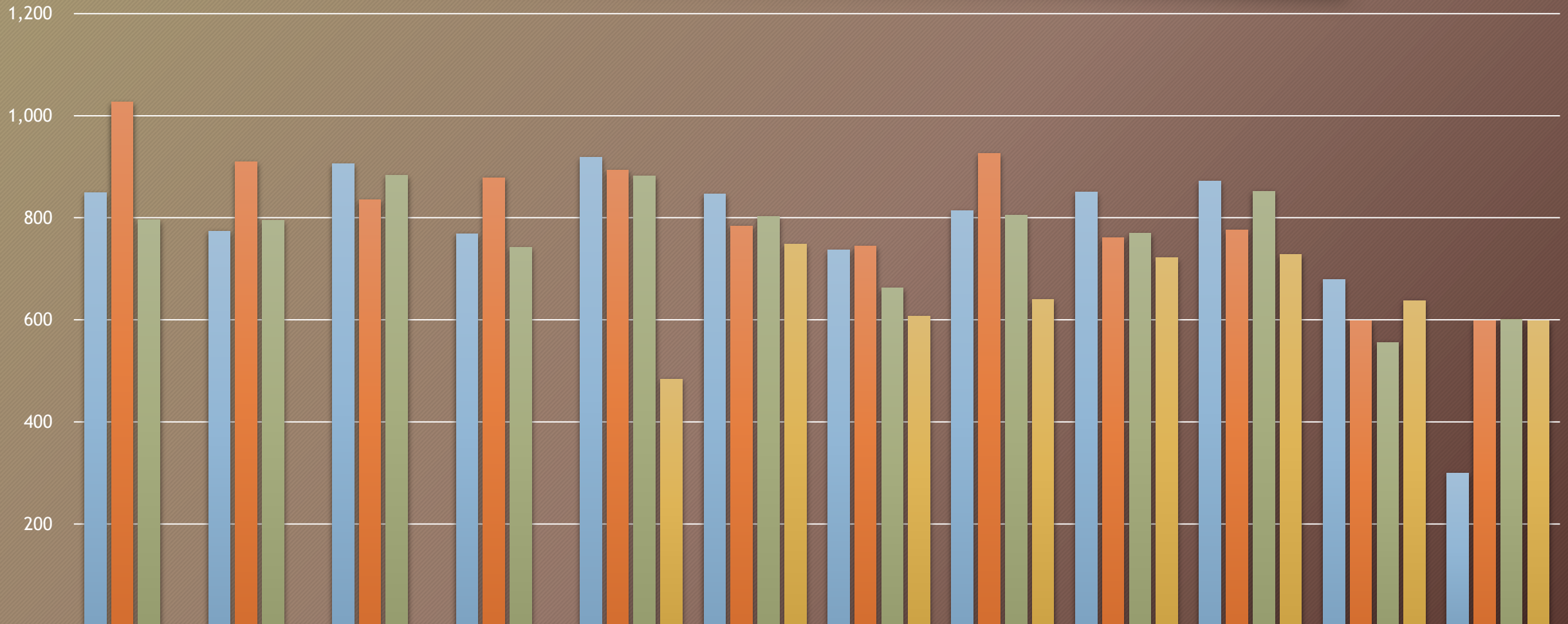
Online Extensions by Year

6



Online New Creations - For Profit

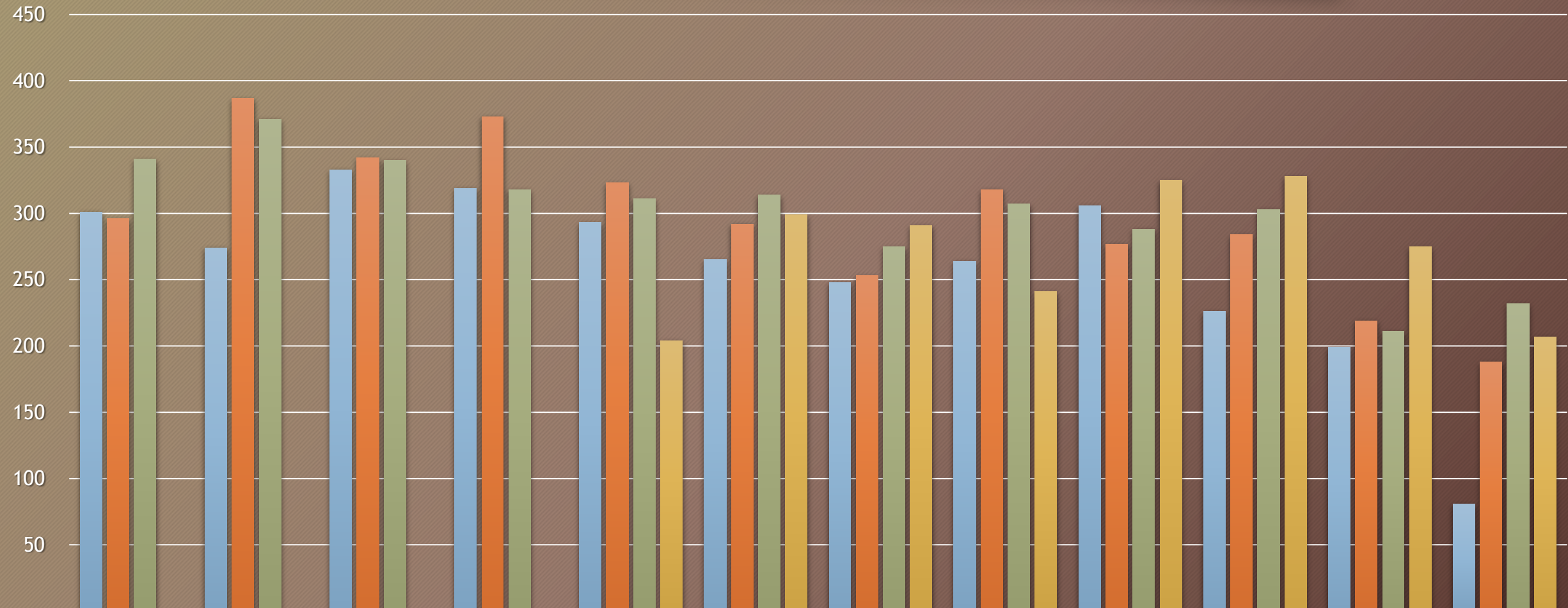
7



	January	February	March	April	May	June	July	August	September	October	November	December
■ 2014	849	774	906	769	918	846	737	814	850	872	679	300
■ 2013	1,027	910	835	879	893	784	744	926	761	776	598	598
■ 2012	796	795	883	742	882	802	662	805	770	852	556	601
■ 2011	-	-	-	-	484	748	607	640	722	728	638	598

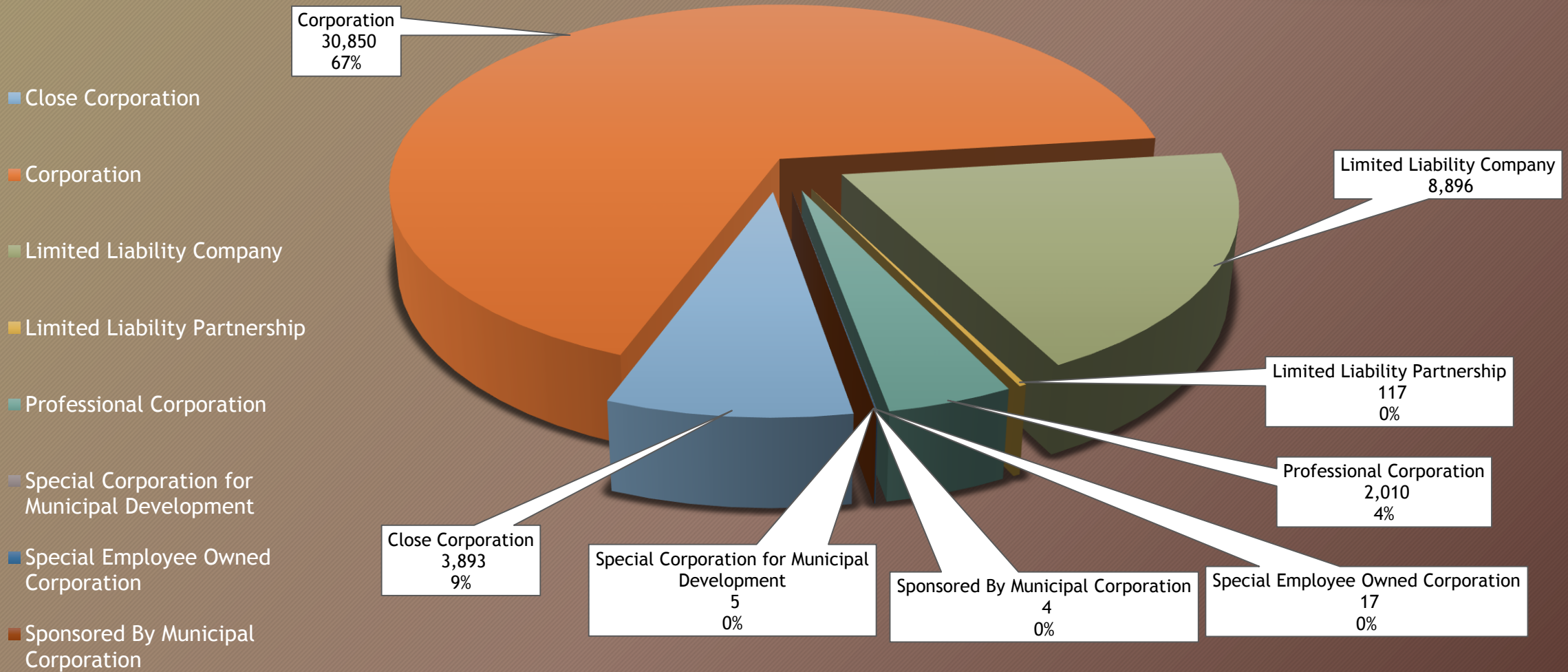
Online New Creations - Non Profit

8



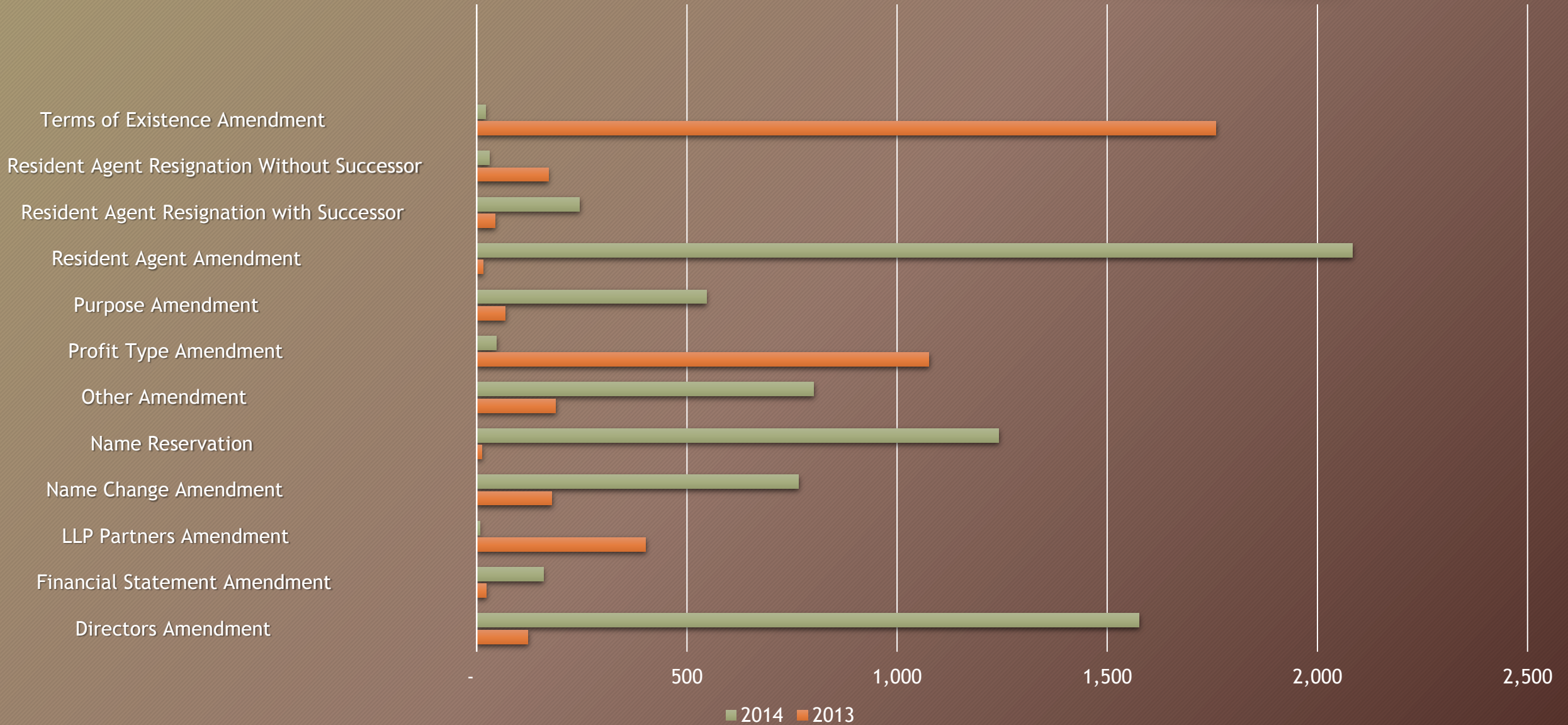
	January	February	March	April	May	June	July	August	September	October	November	December
2014	301	274	333	319	293	265	248	264	306	226	199	81
2013	296	387	342	373	323	292	253	318	277	284	219	188
2012	341	371	340	318	311	314	275	307	288	303	211	232
2011	-	-	-	-	204	299	291	241	325	328	275	207

Online Creations by Corp Type

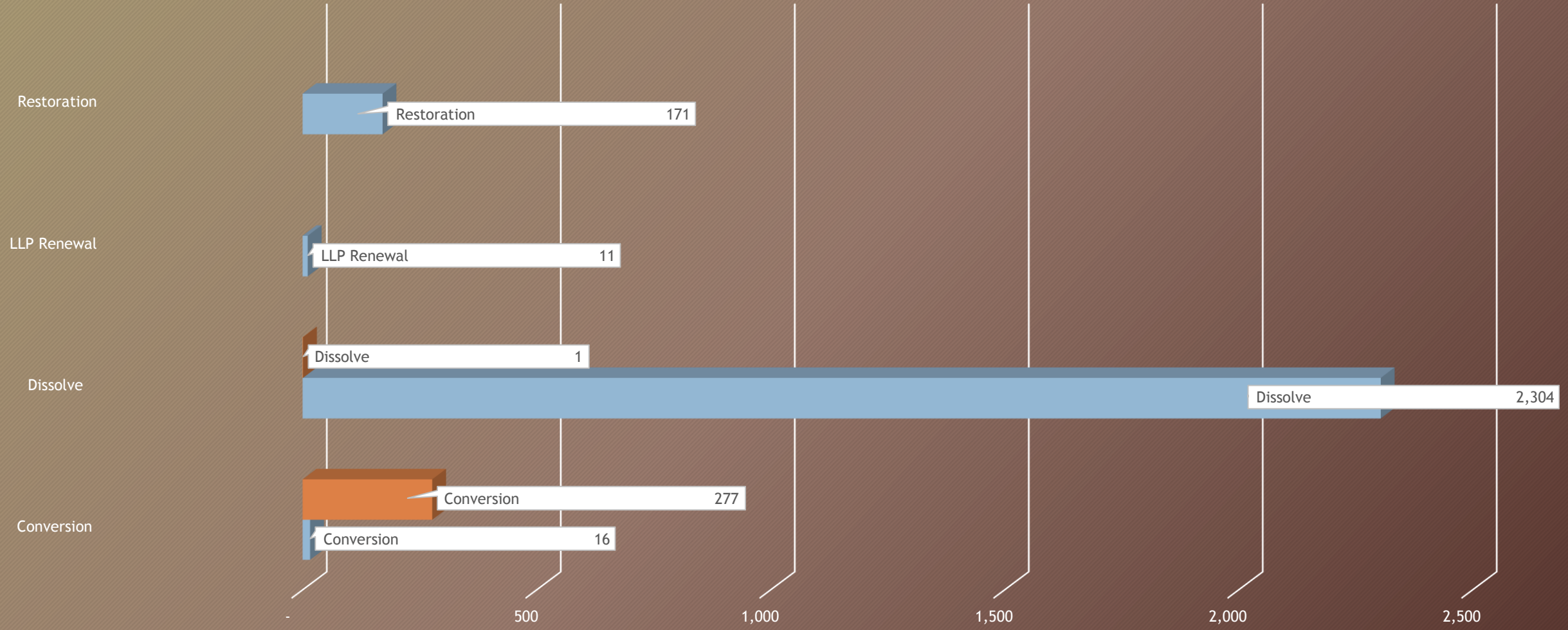


Online Amendments - Two Years Comparison

10



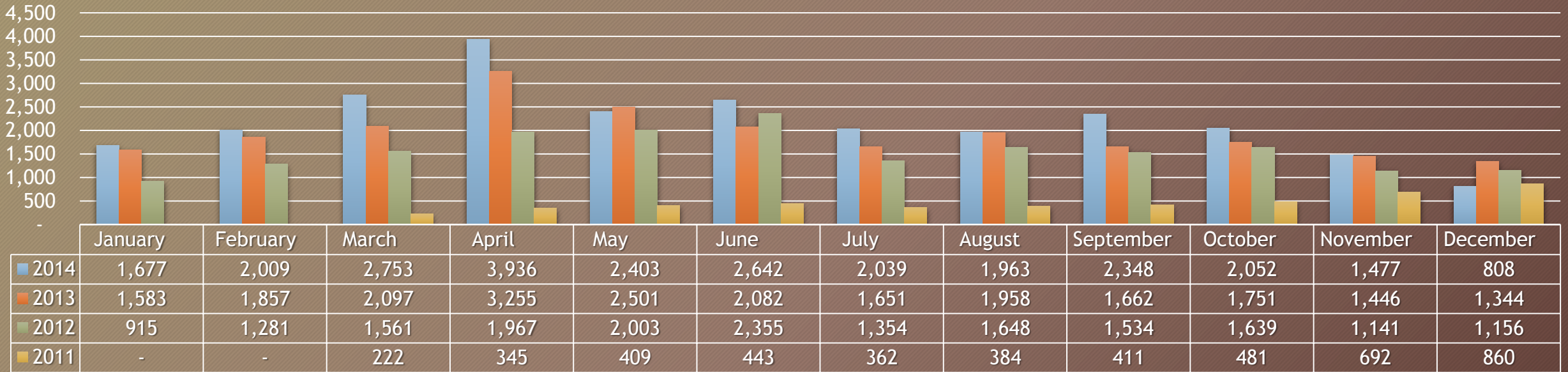
Other Online Transactions



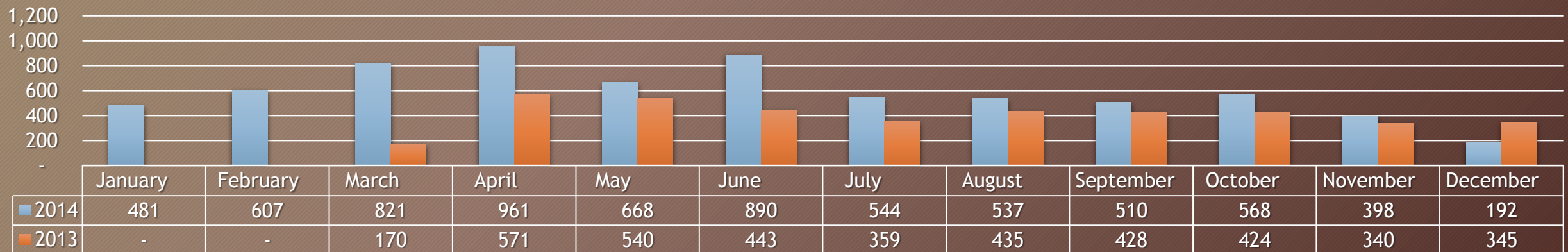
	Conversion	Dissolve	LLP Renewal	Restoration
2013	277	1		
2014	16	2,304	11	171

Online Certificates Month by Month

Certificates of Good Standing



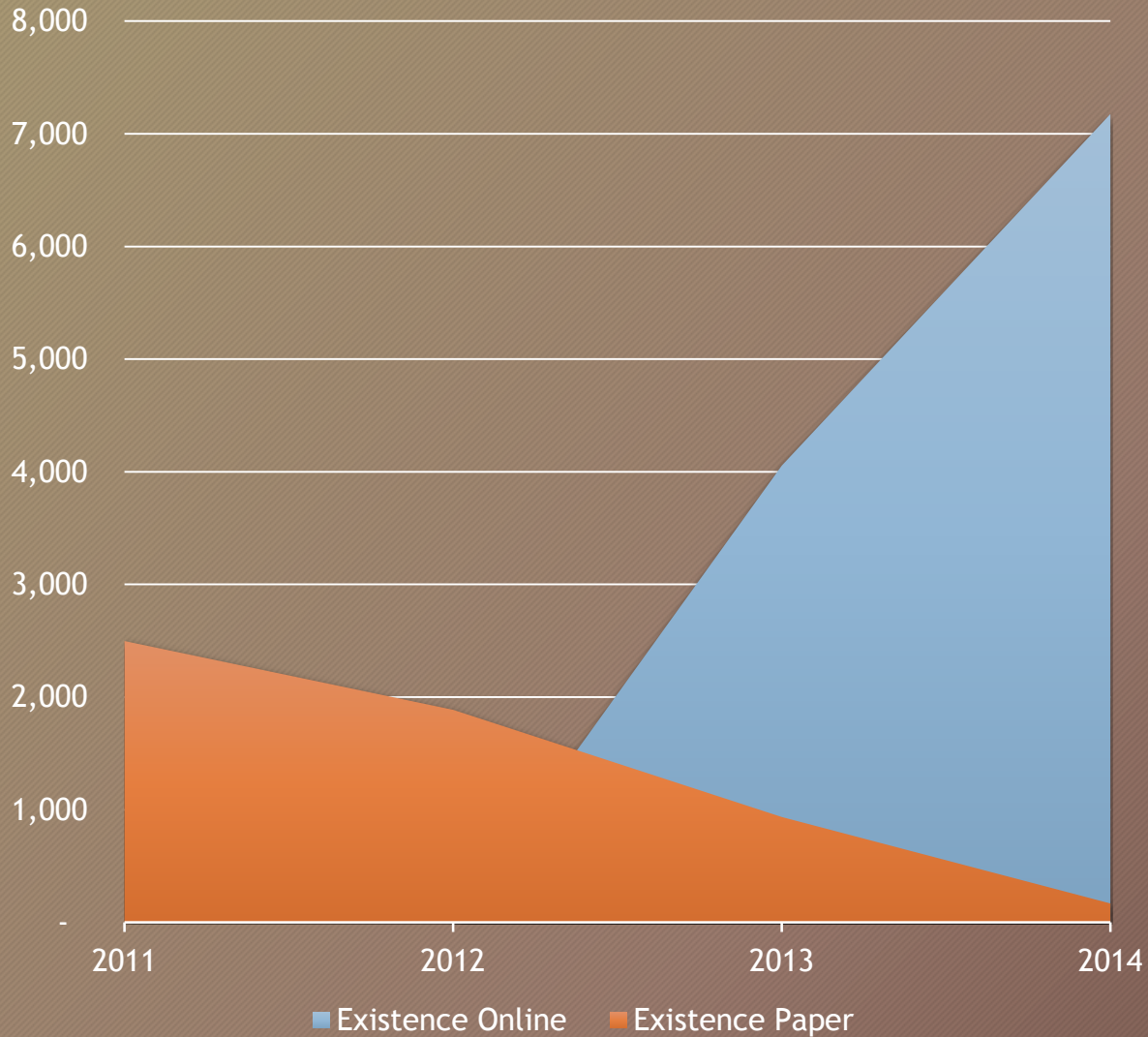
Certificates of Existence



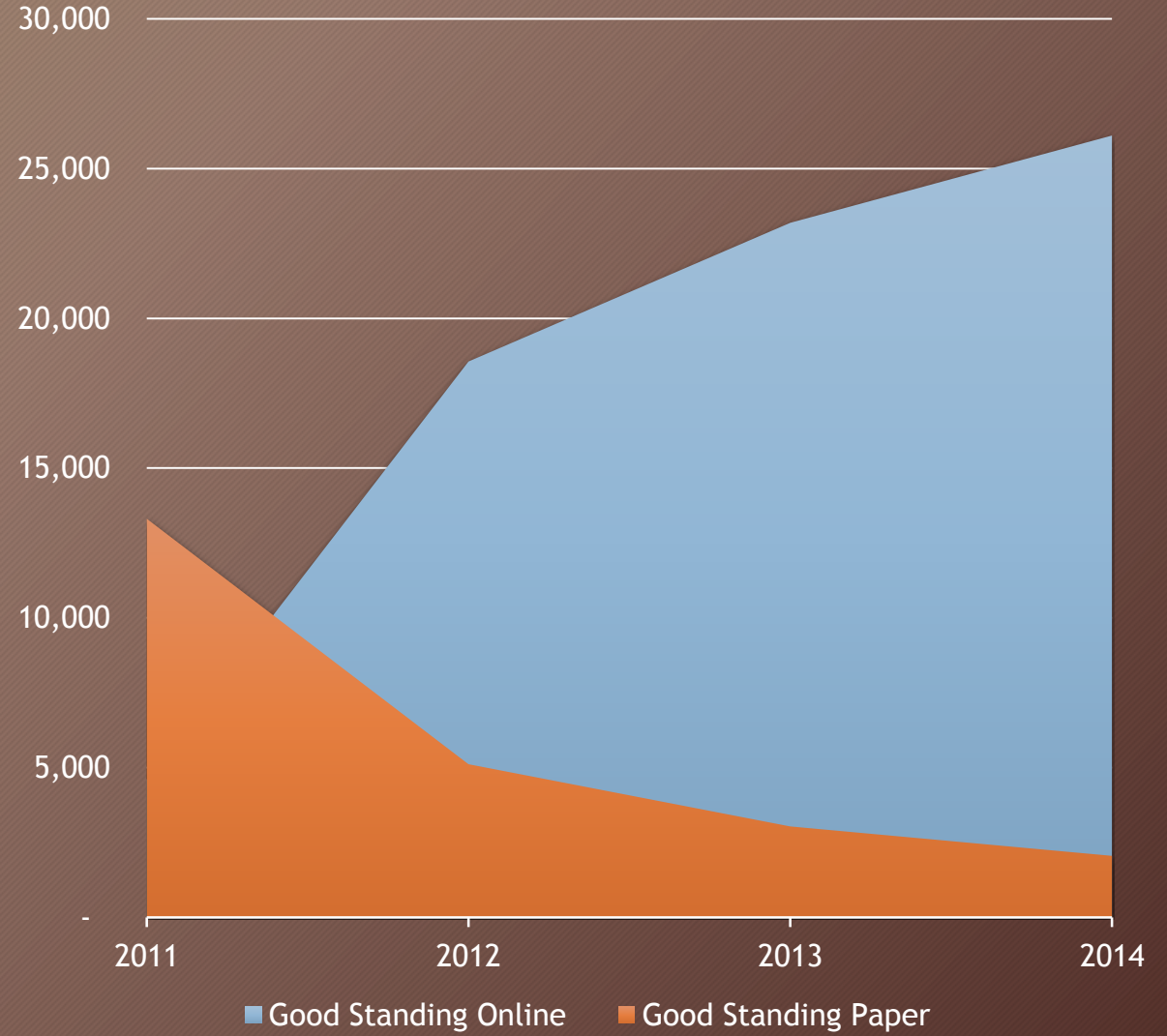
Online Certificates Comparison

13

Online Vs. Paper - Existence

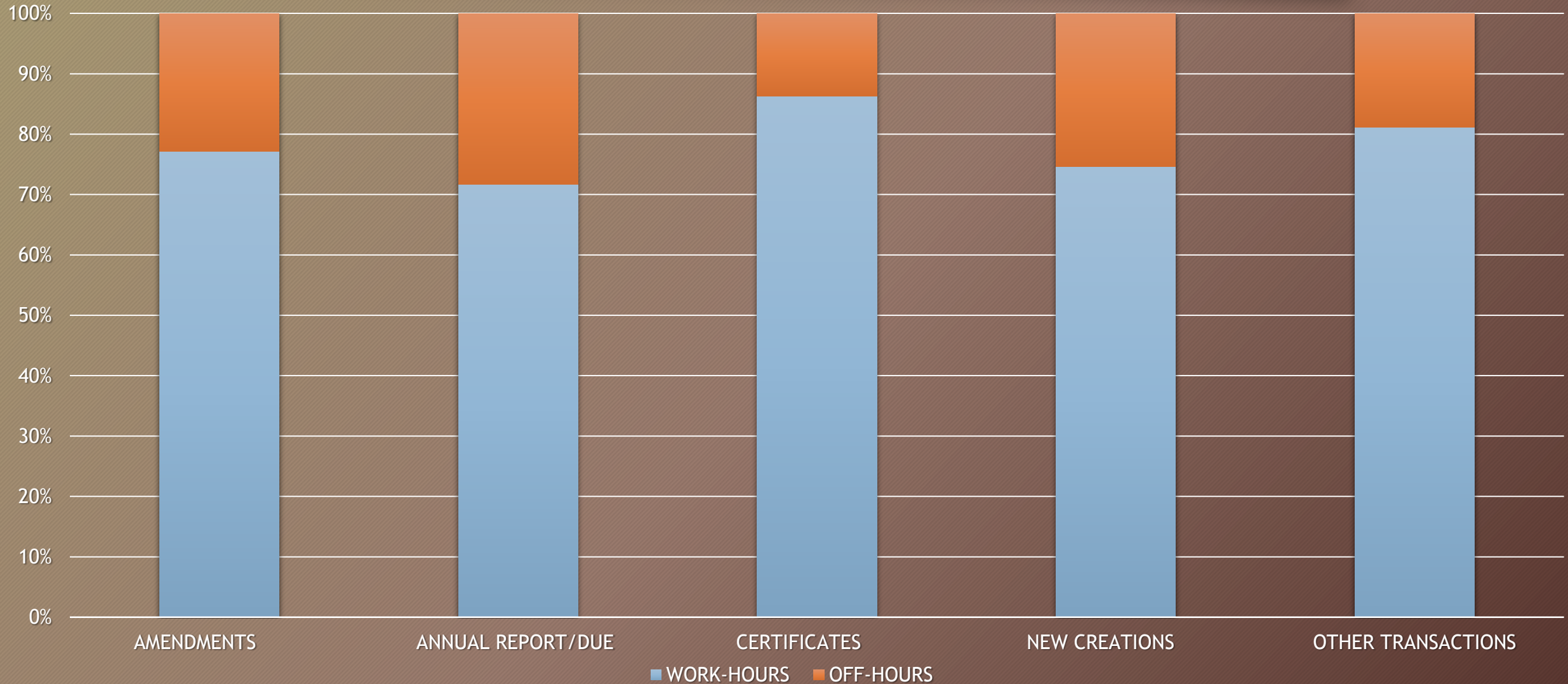


Online Vs. Paper - Good Standing



Work Hours Vs. Off-Hours Comparison

14



Work-Hours = Monday-Friday / 8:00am-6:00pm



Carlos D. Serrano
cserrano@fileoneinc.com
Technical Support Specialist
FileONE, LLC
919.745.2197

Recibido: 12 de diciembre de 2014