

Informe estadístico del Registro de Corporaciones

| DATA | | | | | | | |
|-------------------------------|--------|--------|------------|--------|------|-------|--------|
| Annual Report/Dues Comparison | | | | | | | |
| Year | Profit | % | Non-Profit | % | LLC | % | Totals |
| 2014 | 34973 | 69% | 8094 | 16% | 7883 | 15% | 50950 |
| 2013 | 50255 | 75% | 10225 | 15% | 6246 | 9% | 66726 |
| 2012 | 50530 | 78% | 9729 | 15% | 4915 | 8% | 65174 |
| 2011 | 50297 | 79% | 9708 | 15% | 3457 | 5% | 63462 |
| 2010 | 48846 | 83% | 8678 | 15% | 1533 | 3% | 59057 |
| 2009 | 13753 | 81% | 2445 | 14% | 771 | 5% | 16969 |
| DIFF 14-13 | -15282 | -43.7% | -2131 | -26.3% | 1637 | 20.8% | -15776 |
| DIFF 13-12 | -275 | -0.5% | 496 | 4.9% | 1331 | 21.3% | 1552 |
| DIFF 12-11 | 233 | 0.5% | 21 | 0.2% | 1458 | 29.7% | 1712 |
| DIFF 11-10 | 1451 | 2.9% | 1030 | 10.6% | 1924 | 55.7% | 4405 |
| DIFF 10-09 | 35093 | 71.8% | 6233 | 71.8% | 762 | 49.7% | 42088 |

| Certificates | | | | | | | |
|-------------------------------|--------|--------|----------|---------------------------|--------|-------|----------|
| Certificates of Good Standing | | | | Certificates of Existence | | | |
| Year | Online | Paper | Combined | Year | Online | Paper | Combined |
| 2010 | - | 13,593 | 13,593 | 2010 | - | 2,081 | 2,081 |
| 2011 | 4,609 | 13,304 | 17,913 | 2011 | - | 2,498 | 2,498 |
| 2012 | 18,554 | 5,116 | 23,670 | 2012 | - | 1,886 | 1,886 |
| 2013 | 23,187 | 3,037 | 26,224 | 2013 | 4,055 | 936 | 4,991 |
| 2014 | 26,880 | 2,131 | 29,011 | 2014 | 7,374 | 172 | 7,546 |
| 2015 | 13,677 | 363 | 14,040 | 2015 | 3,370 | 33 | 3,403 |

New Creations

| New Creations by Class | | |
|---|--------|--------|
| Class | Amount | % |
| Close Corporation | 4,296 | 8.27% |
| Corporation | 34,526 | 66.49% |
| Limited Liability Company | 10,778 | 20.76% |
| Limited Liability Partnership | 129 | 0.25% |
| Municipal Enterprise | 3 | 0.01% |
| Professional Corporation | 2,150 | 4.14% |
| Special Corporation for Municipal Development | 5 | 0.01% |
| Special Employee Owned Corporation | 21 | 0.04% |
| Sponsored By Municipal Corporation | 20 | 0.04% |

| Online New Creations | | | | New Creations Comparison (Paper VS Online) | | | |
|----------------------|------------|-----------|----------|--|-------|--------|----------|
| Month - Year | For Profit | Non-Proft | SubTotal | Month - Year | Paper | Online | Combined |
| May-11 | 484 | 204 | 688 | May-11 | 1,473 | 688 | 2,161 |
| Jun-11 | 747 | 299 | 1,046 | Jun-11 | 764 | 1,046 | 1,810 |
| Jul-11 | 607 | 291 | 898 | Jul-11 | 652 | 898 | 1,550 |
| Aug-11 | 640 | 241 | 881 | Aug-11 | 488 | 881 | 1,369 |
| Sep-11 | 722 | 325 | 1,047 | Sep-11 | 523 | 1,047 | 1,570 |
| Oct-11 | 728 | 328 | 1,056 | Oct-11 | 454 | 1,056 | 1,510 |
| Nov-11 | 638 | 275 | 913 | Nov-11 | 329 | 913 | 1,242 |
| Dec-11 | 598 | 207 | 805 | Dec-11 | 267 | 805 | 1,072 |
| Jan-12 | 796 | 341 | 1,137 | Jan-12 | 202 | 1,137 | 1,339 |
| Feb-12 | 795 | 371 | 1,166 | Feb-12 | 216 | 1,166 | 1,382 |
| Mar-12 | 883 | 340 | 1,223 | Mar-12 | 255 | 1,223 | 1,478 |
| Apr-12 | 742 | 318 | 1,060 | Apr-12 | 247 | 1,060 | 1,307 |
| May-12 | 882 | 311 | 1,193 | May-12 | 256 | 1,193 | 1,449 |
| Jun-12 | 802 | 314 | 1,116 | Jun-12 | 189 | 1,116 | 1,305 |
| Jul-12 | 662 | 275 | 937 | Jul-12 | 141 | 937 | 1,078 |
| Aug-12 | 805 | 307 | 1,112 | Aug-12 | 143 | 1,112 | 1,255 |
| Sep-12 | 770 | 288 | 1,058 | Sep-12 | 157 | 1,058 | 1,215 |
| Oct-12 | 852 | 303 | 1,155 | Oct-12 | 122 | 1,155 | 1,277 |
| Nov-12 | 556 | 211 | 767 | Nov-12 | 94 | 767 | 861 |
| Dec-12 | 601 | 232 | 833 | Dec-12 | 123 | 833 | 956 |
| Jan-13 | 1,027 | 296 | 1,323 | Jan-13 | 101 | 1,323 | 1,424 |
| Feb-13 | 910 | 387 | 1,297 | Feb-13 | 96 | 1,297 | 1,393 |
| Mar-13 | 835 | 342 | 1,177 | Mar-13 | 111 | 1,177 | 1,288 |

| Online New Creations | | | | New Creations Comparison (Paper VS Online) | | | |
|----------------------|------------|-----------|----------|--|-------|--------|----------|
| Month - Year | For Profit | Non-Proft | SubTotal | Month - Year | Paper | Online | Combined |
| Apr-13 | 880 | 372 | 1,252 | Apr-13 | 132 | 1,252 | 1,384 |
| May-13 | 893 | 323 | 1,216 | May-13 | 133 | 1,216 | 1,349 |
| Jun-13 | 784 | 292 | 1,076 | Jun-13 | 103 | 1,076 | 1,179 |
| Jul-13 | 744 | 253 | 997 | Jul-13 | 87 | 997 | 1,084 |
| Aug-13 | 926 | 318 | 1,244 | Aug-13 | 111 | 1,244 | 1,355 |
| Sep-13 | 761 | 277 | 1,038 | Sep-13 | 85 | 1,038 | 1,123 |
| Oct-13 | 776 | 284 | 1,060 | Oct-13 | 89 | 1,060 | 1,149 |
| Nov-13 | 598 | 219 | 817 | Nov-13 | 77 | 817 | 894 |
| Dec-13 | 598 | 188 | 786 | Dec-13 | 84 | 786 | 870 |
| Jan-14 | 849 | 301 | 1,150 | Jan-14 | 107 | 1,150 | 1,257 |
| Feb-14 | 774 | 274 | 1,048 | Feb-14 | 109 | 1,048 | 1,157 |
| Mar-14 | 906 | 333 | 1,239 | Mar-14 | 92 | 1,239 | 1,331 |
| Apr-14 | 769 | 319 | 1,088 | Apr-14 | 72 | 1,088 | 1,160 |
| May-14 | 918 | 293 | 1,211 | May-14 | 67 | 1,211 | 1,278 |
| Jun-14 | 846 | 265 | 1,111 | Jun-14 | 89 | 1,111 | 1,200 |
| Jul-14 | 737 | 248 | 985 | Jul-14 | 49 | 985 | 1,034 |
| Aug-14 | 814 | 264 | 1,078 | Aug-14 | 81 | 1,078 | 1,159 |
| Sep-14 | 849 | 306 | 1,155 | Sep-14 | 125 | 1,155 | 1,280 |
| Oct-14 | 872 | 226 | 1,098 | Oct-14 | 134 | 1,098 | 1,232 |
| Nov-14 | 679 | 199 | 878 | Nov-14 | 112 | 878 | 990 |
| Dec-14 | 603 | 166 | 769 | Dec-14 | 114 | 769 | 883 |
| Jan-15 | 872 | 285 | 1,157 | Jan-15 | 112 | 1,157 | 1,269 |
| Feb-15 | 785 | 313 | 1,098 | Feb-15 | 133 | 1,098 | 1,231 |

| Online New Creations | | | | New Creations Comparison (Paper VS Online) | | | |
|----------------------|------------|-----------|----------|--|-------|--------|----------|
| Month - Year | For Profit | Non-Proft | SubTotal | Month - Year | Paper | Online | Combined |
| Mar-15 | 945 | 320 | 1,265 | Mar-15 | 60 | 1,265 | 1,325 |
| Apr-15 | 866 | 354 | 1,220 | Apr-15 | - | 1,220 | 1,220 |
| May-15 | 832 | 269 | 1,101 | May-15 | - | 1,101 | 1,101 |



Marvin R. Márquez

General Manager-Puerto Rico
File ONE LLC.

c. (787) 309-8382

p. (919) 854-4123 X198

<http://www.fileoneinc.com>

mmarquez@fileoneinc.com

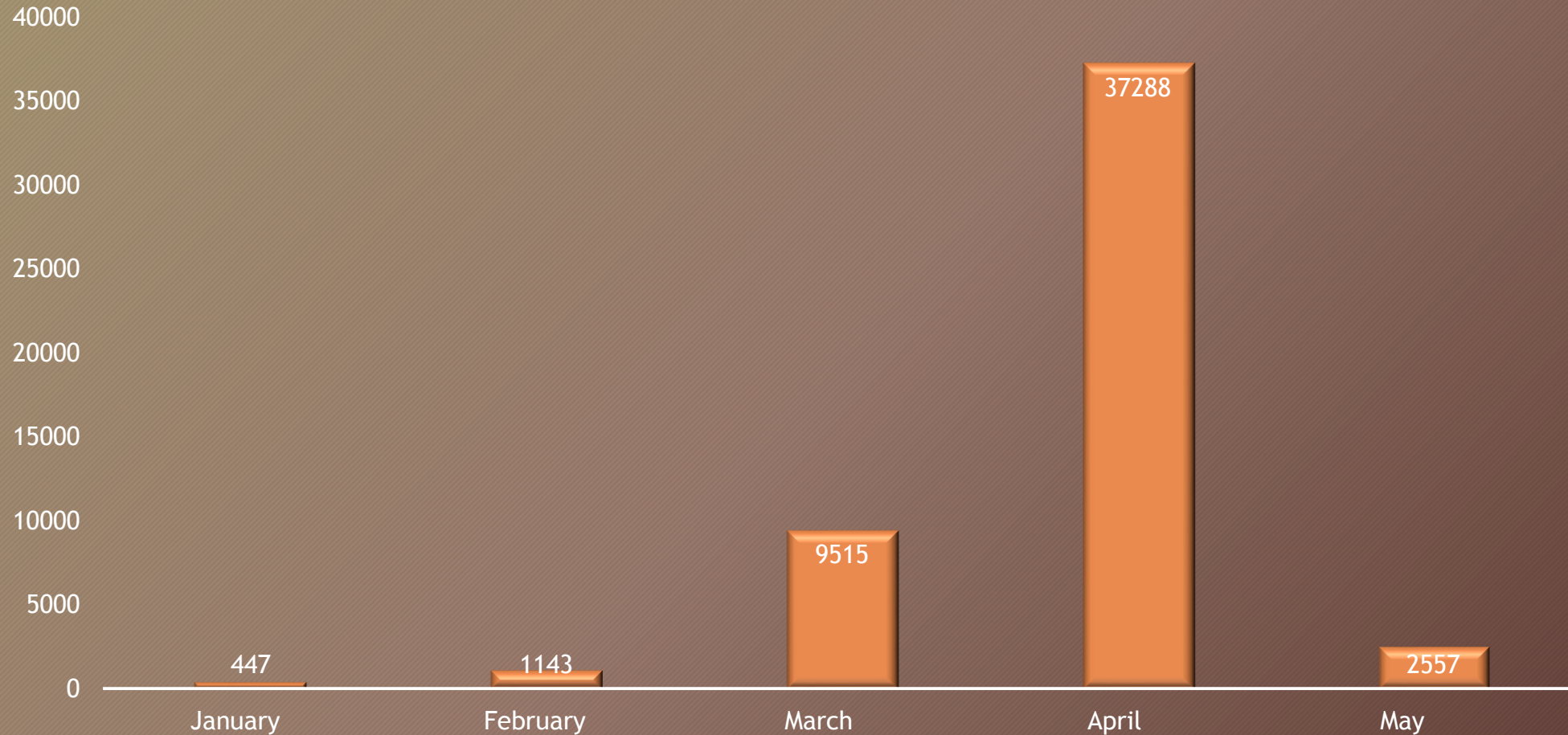
Recibido: 28 de mayo de 2015

Puerto Rico Department of State Corporations Dashboard

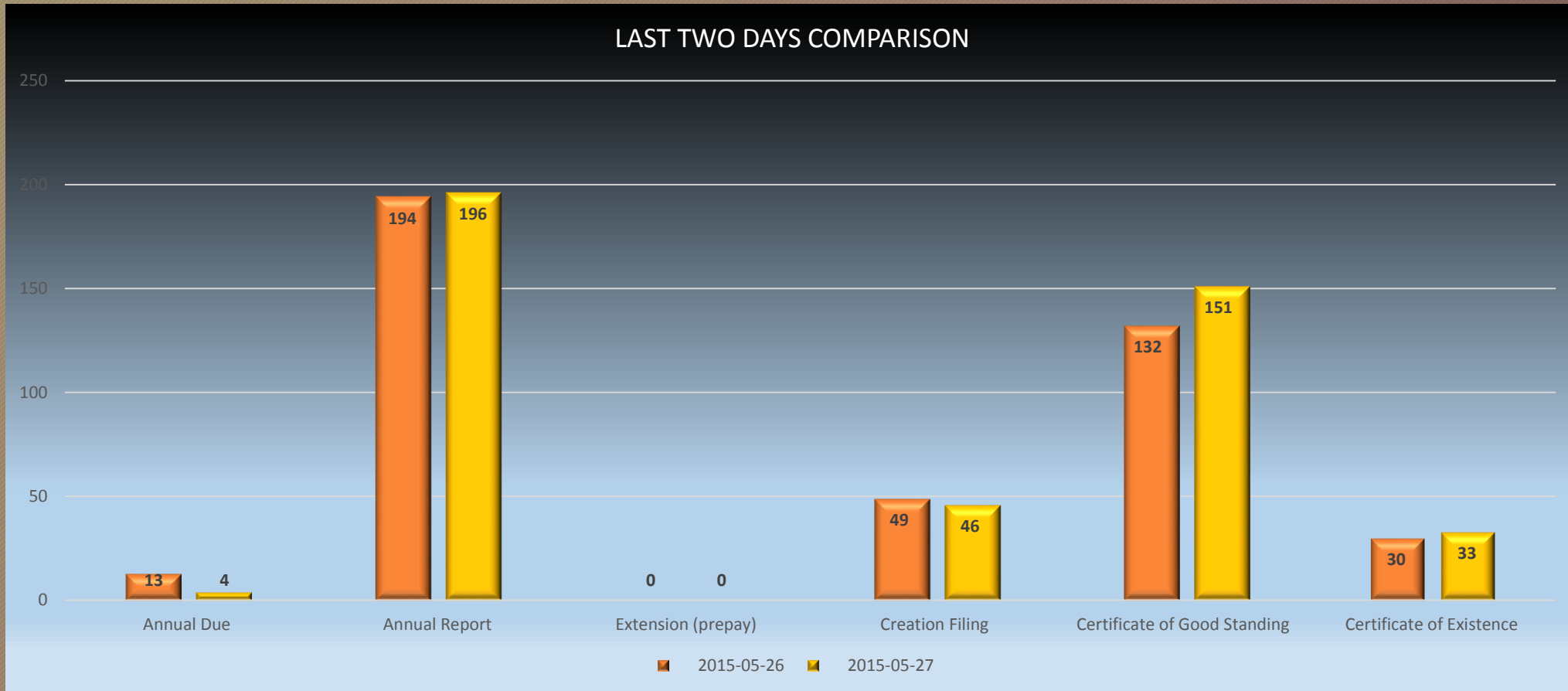
As of May 27, 2015 11:59 pm



SUMMARY OF 2015 FILINGS

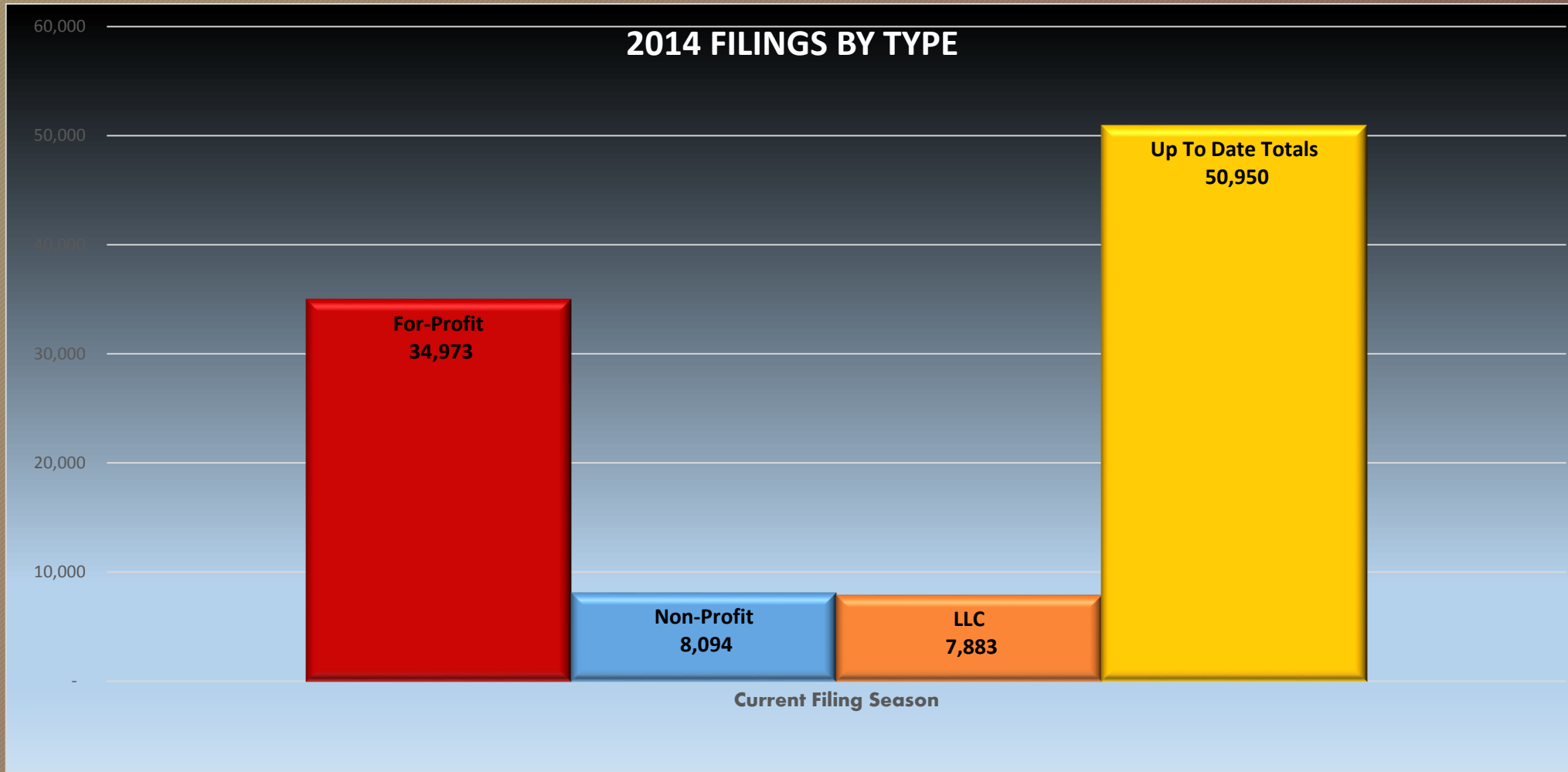


Last Two Day Transactions

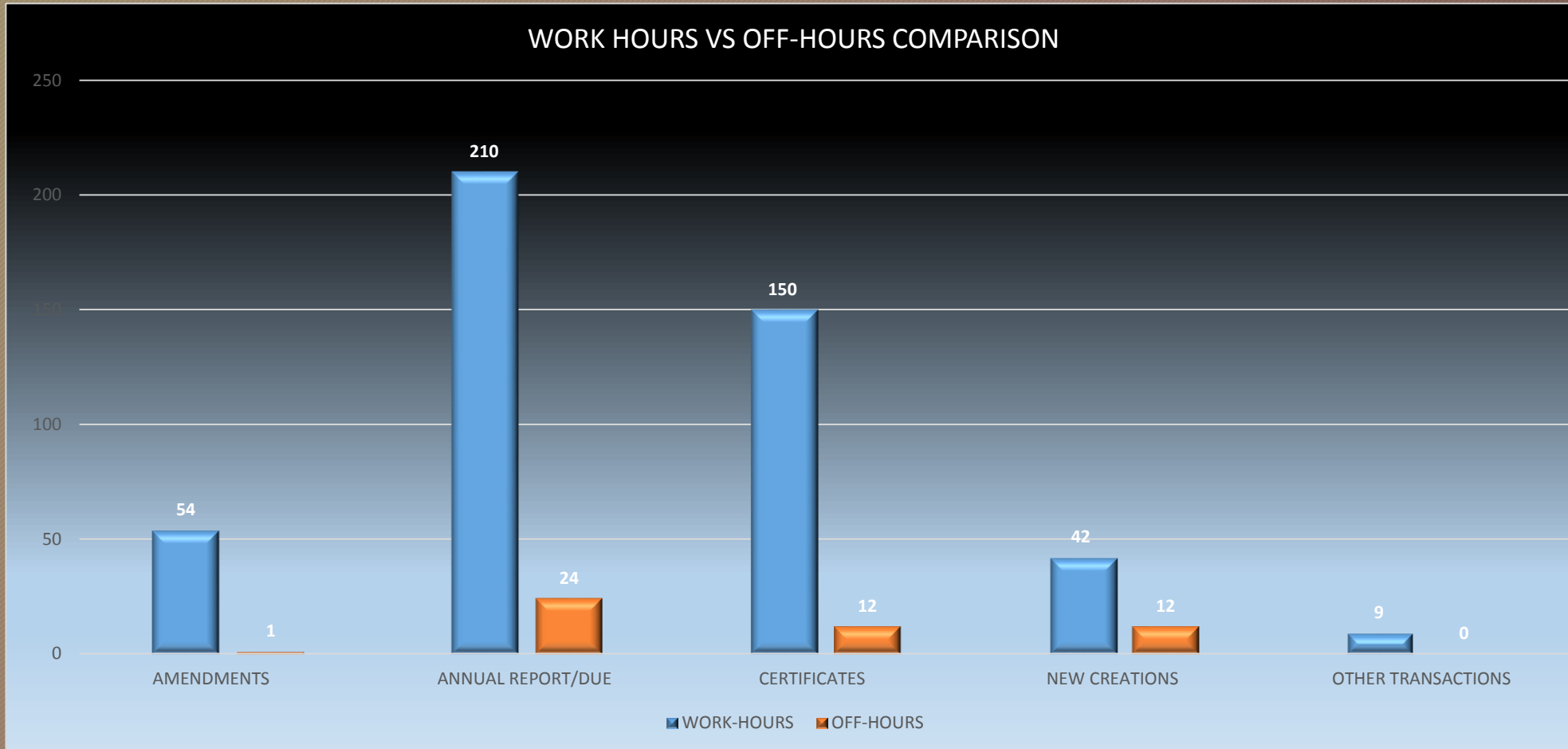


Yesterday's Top Transactions

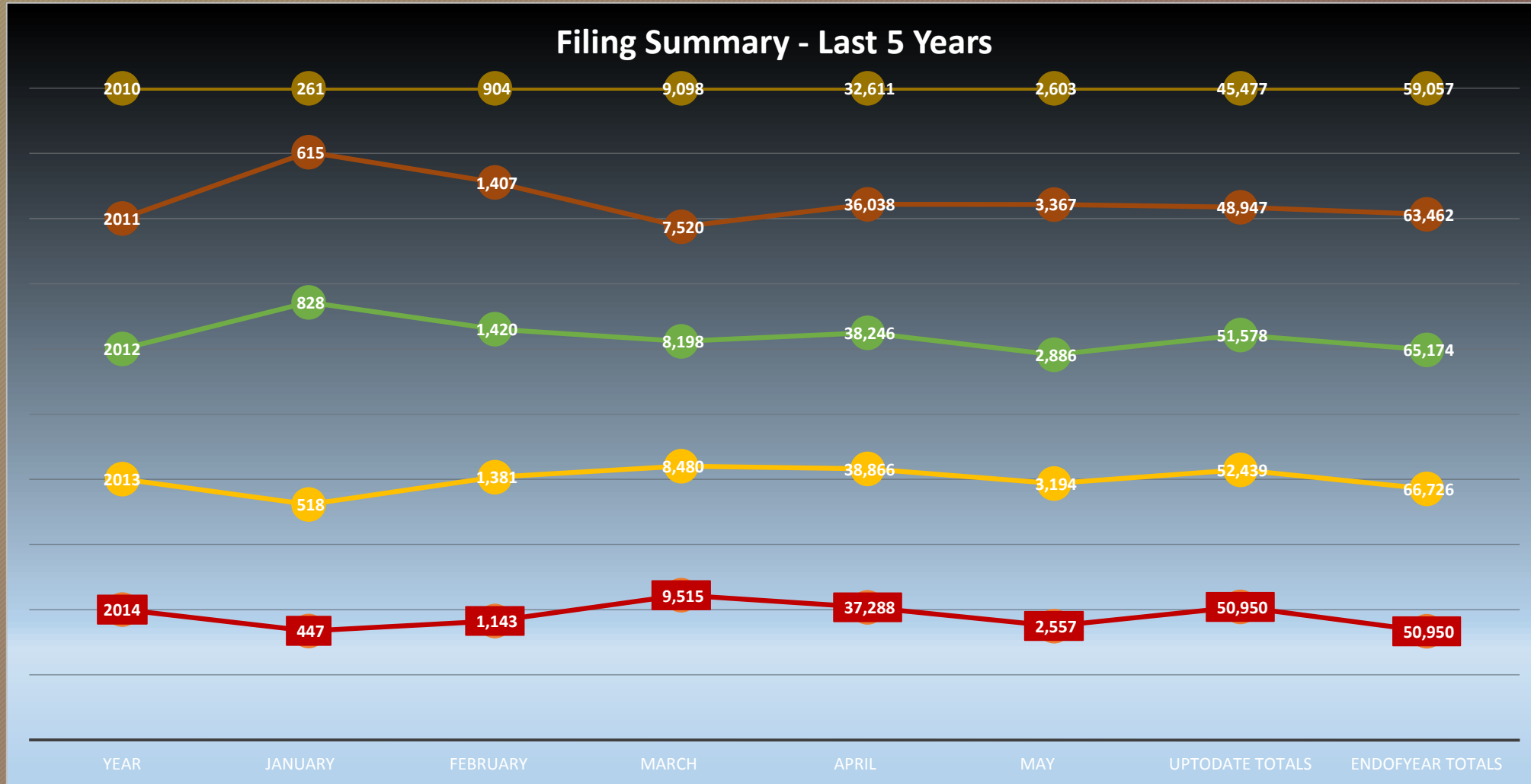
4



Last 24 Hours - Working Hours

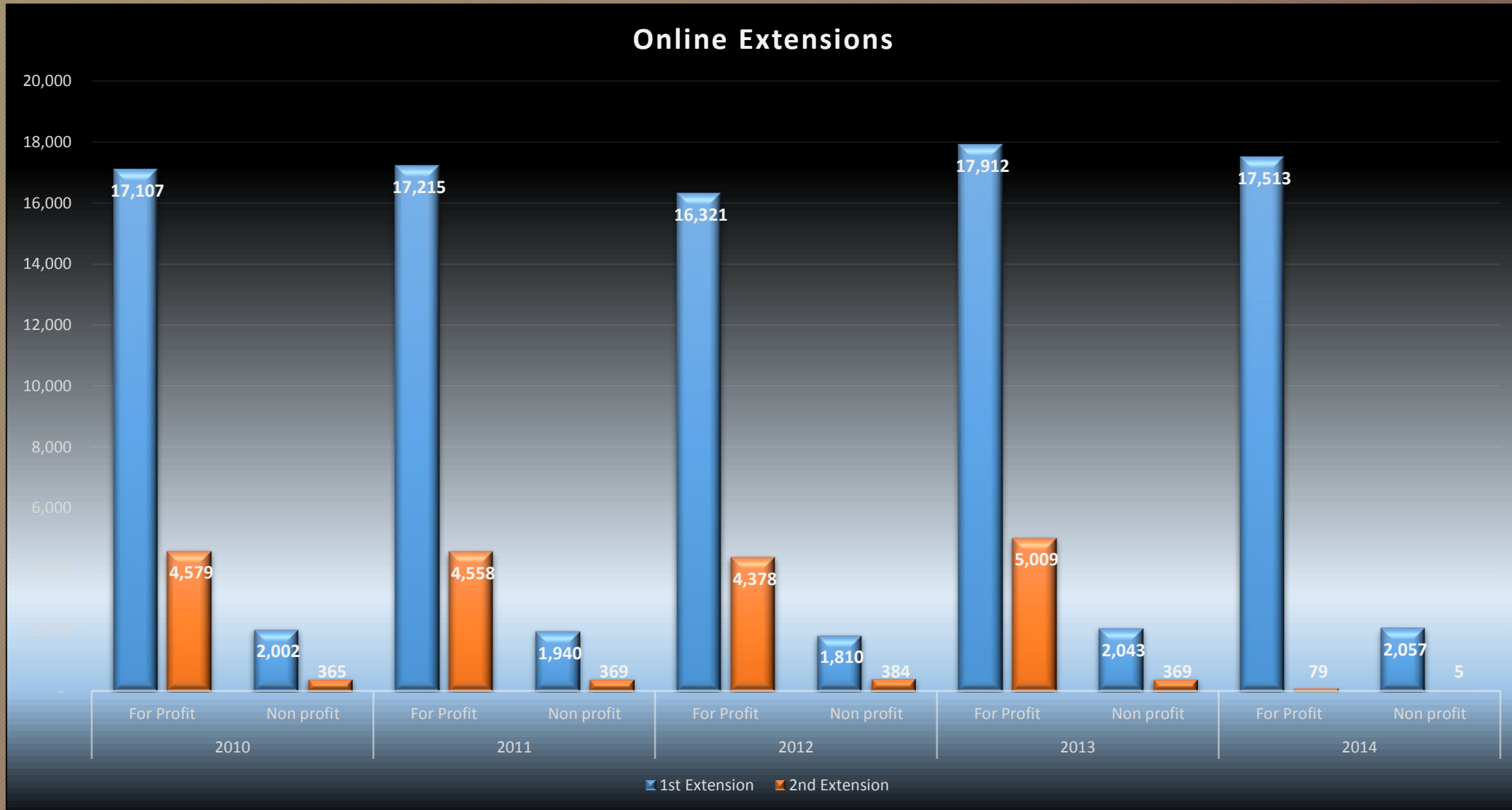


Current Filing Season Compared to Last 5 Years



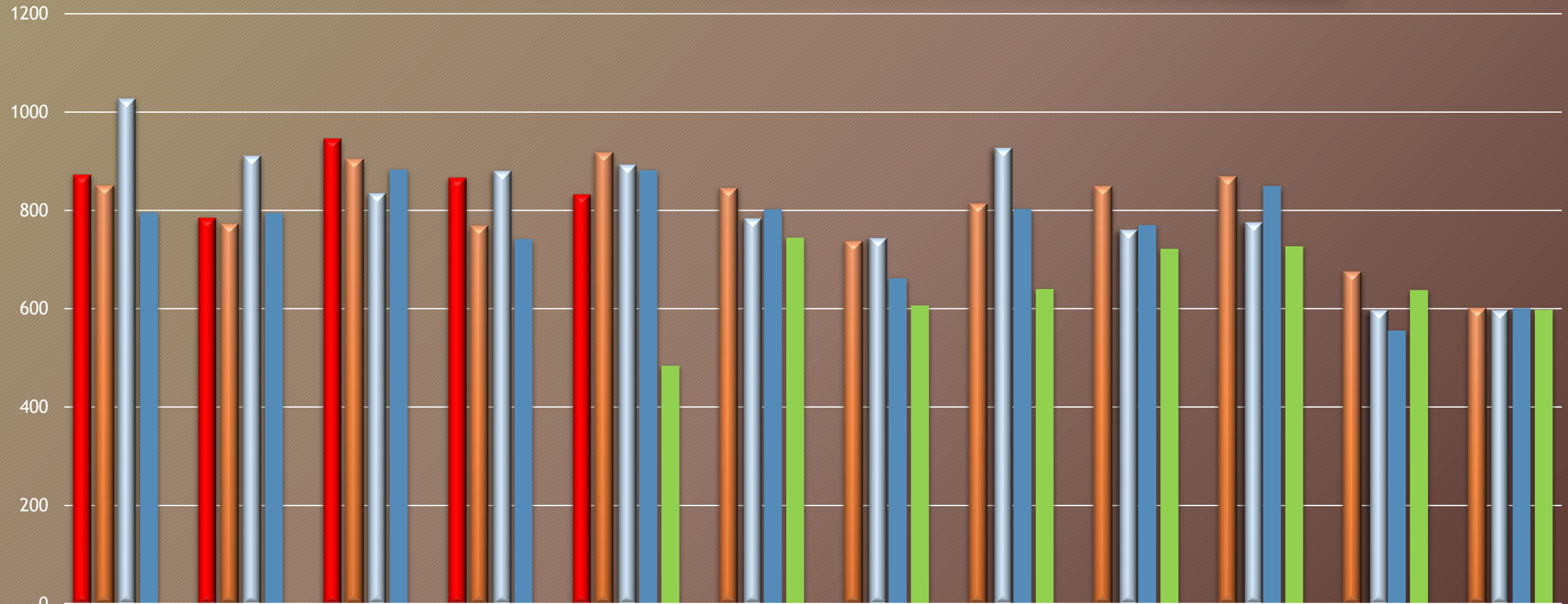
Extensions - 5 Year View

7



Online New Creations - For Profit

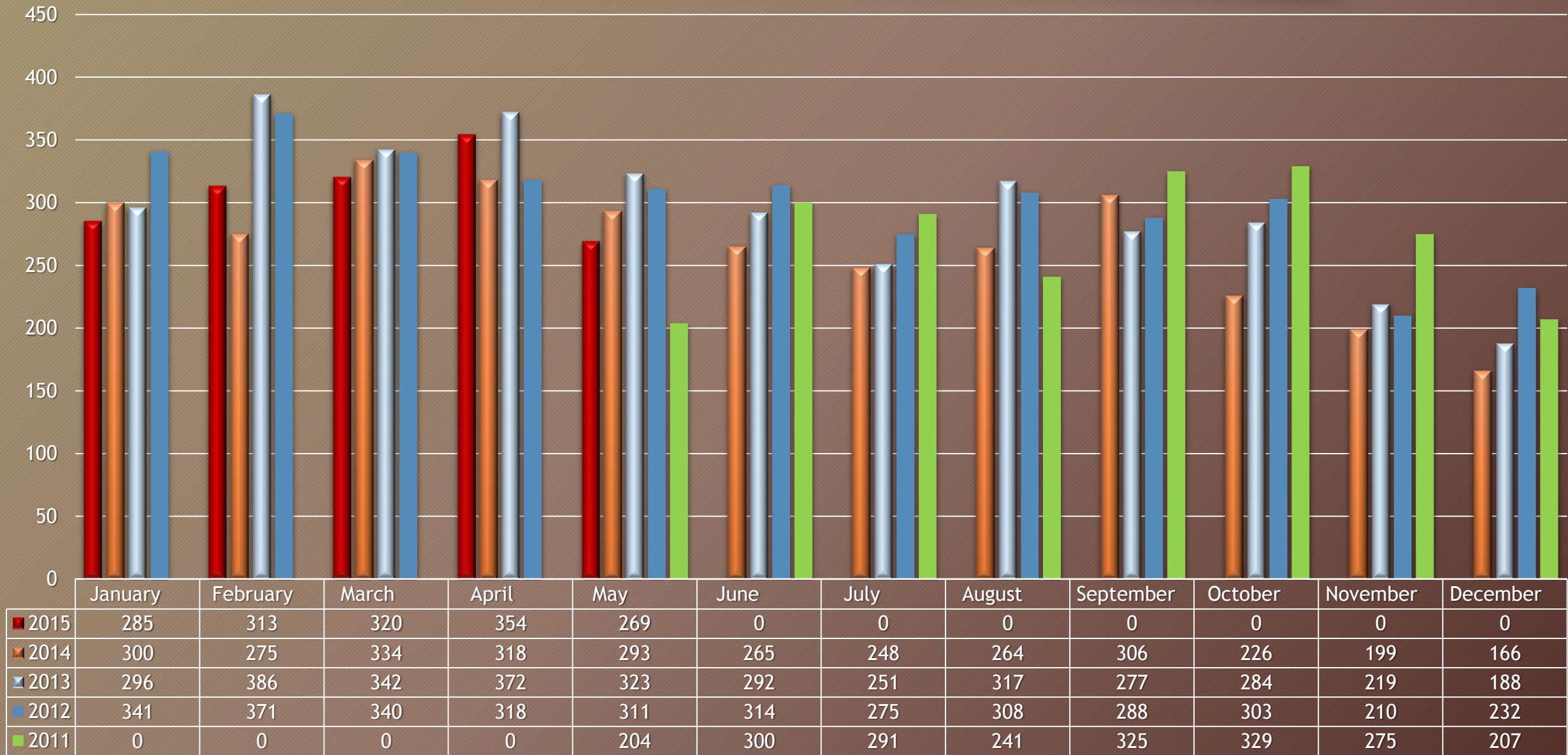
10



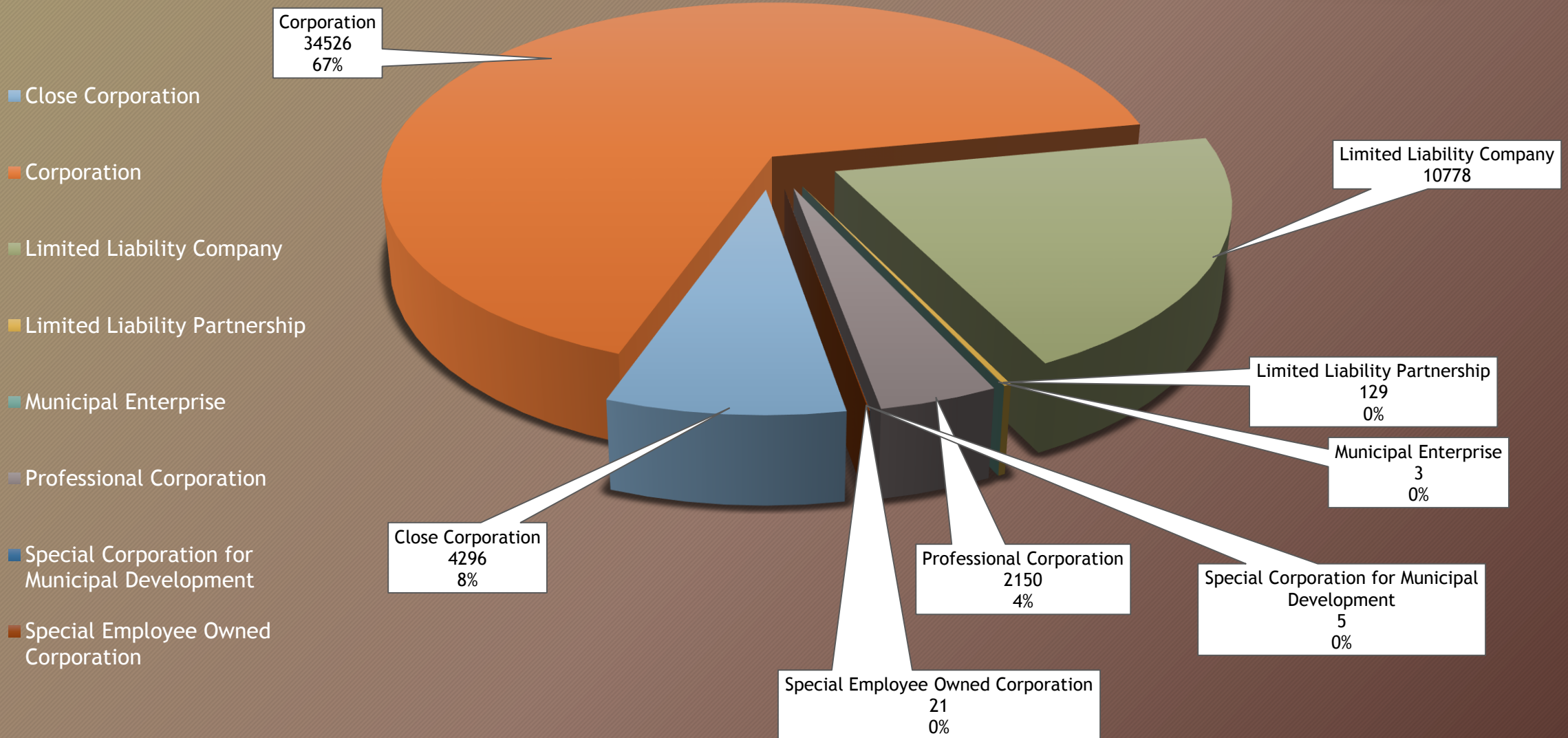
| | January | February | March | April | May | June | July | August | September | October | November | December |
|--------|---------|----------|-------|-------|-----|------|------|--------|-----------|---------|----------|----------|
| ■ 2015 | 872 | 785 | 945 | 866 | 832 | 0 | 0 | 0 | 0 | 0 | 0 | 0 |
| ■ 2014 | 850 | 773 | 904 | 769 | 918 | 846 | 737 | 814 | 849 | 869 | 676 | 601 |
| ■ 2013 | 1027 | 911 | 835 | 880 | 893 | 784 | 744 | 927 | 761 | 776 | 598 | 598 |
| ■ 2012 | 796 | 795 | 883 | 742 | 882 | 802 | 662 | 803 | 770 | 850 | 556 | 601 |
| ■ 2011 | 0 | 0 | 0 | 0 | 484 | 745 | 607 | 640 | 722 | 727 | 638 | 598 |

Online New Creations - Non Profit

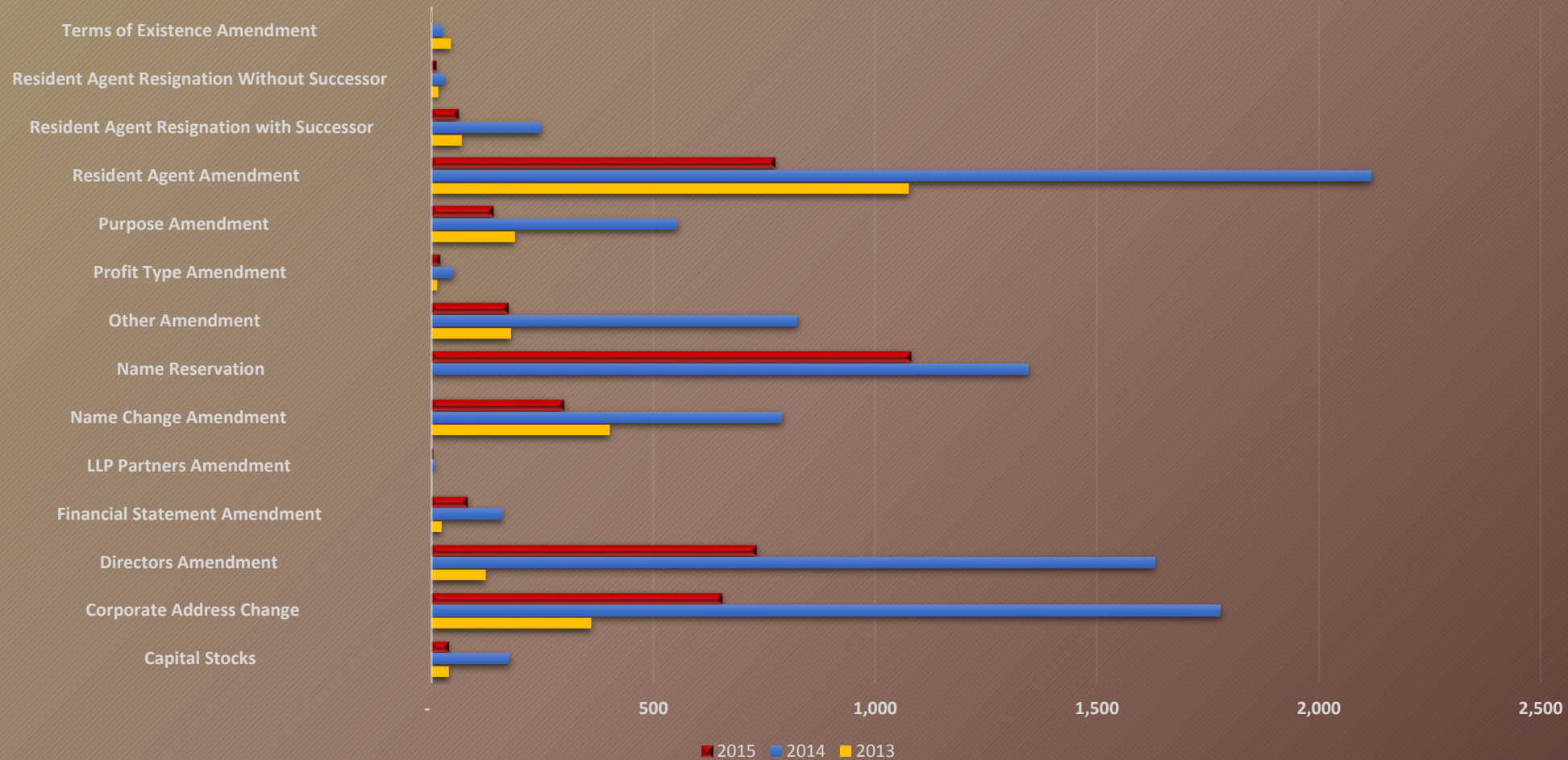
11



Online Creations by Corp Type



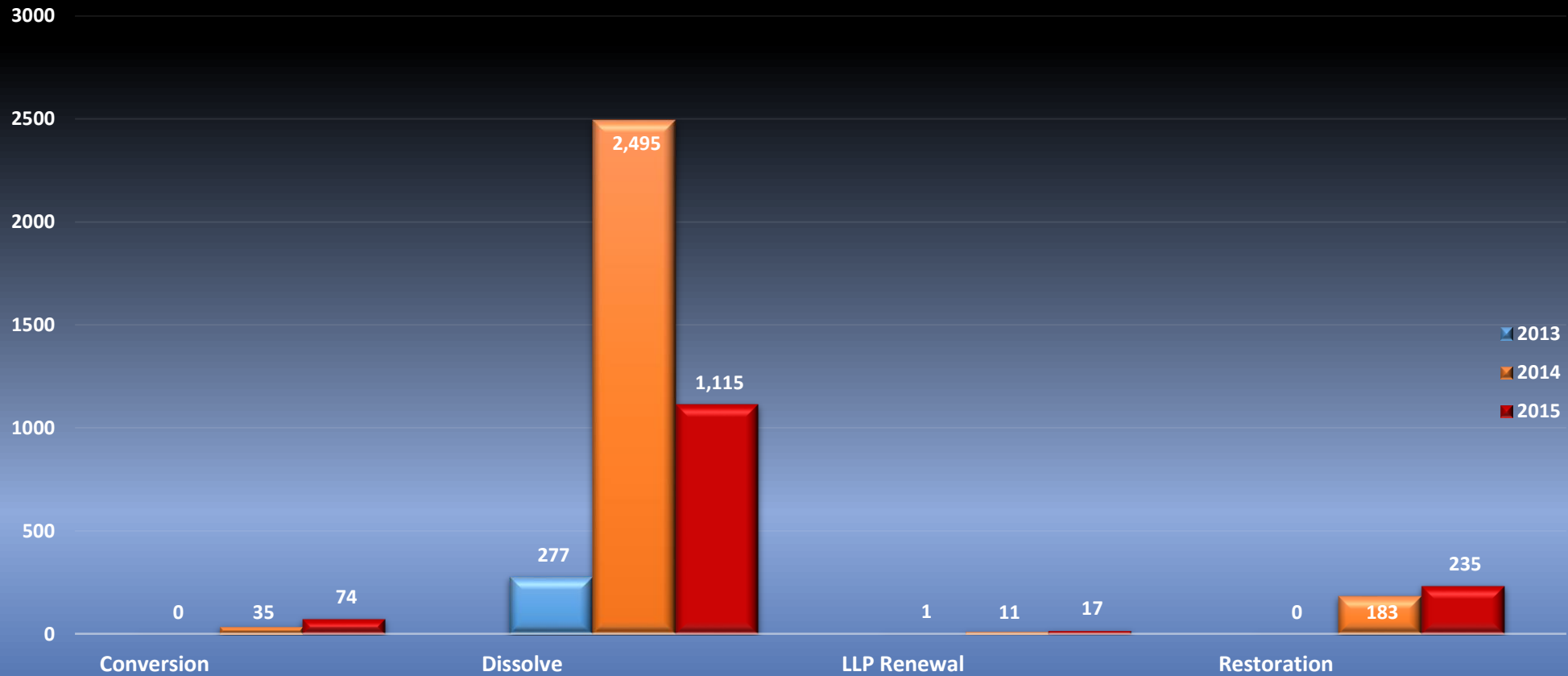
AMENDMENTS - THREE YEARS COMPARISSON



Other Online Transactions

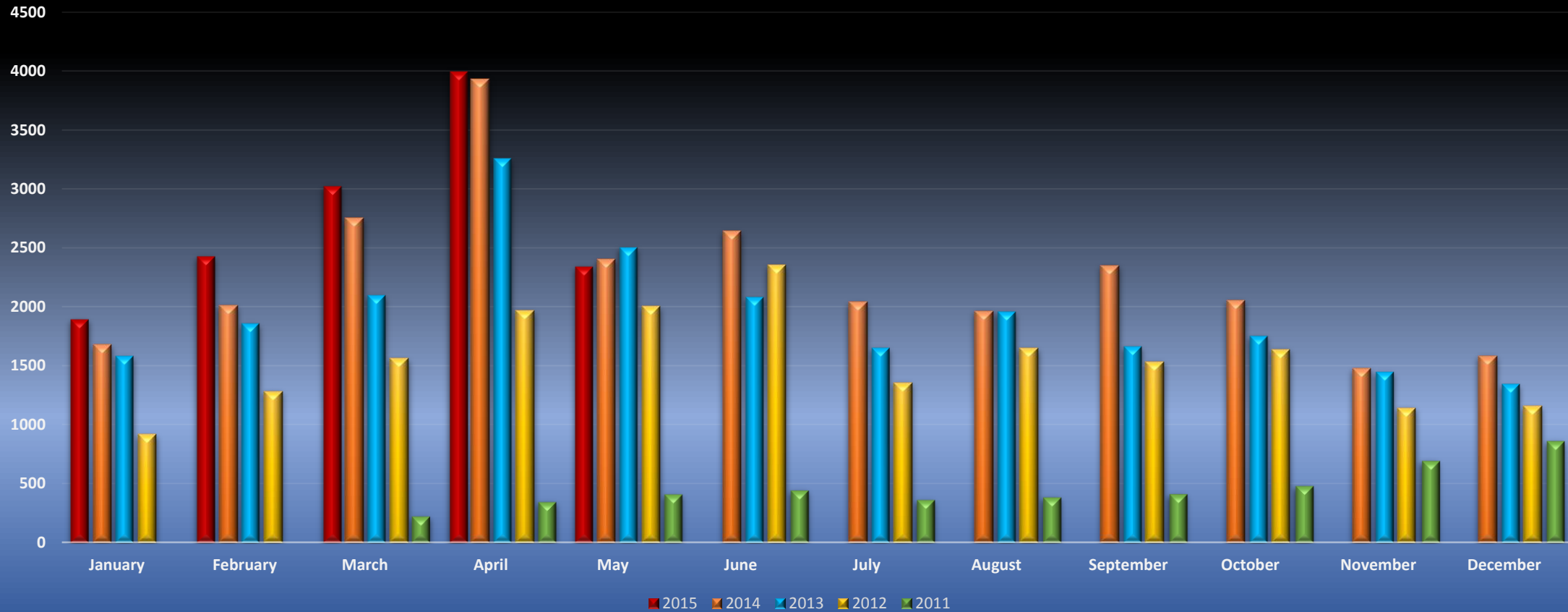
14

Other Online Transactions

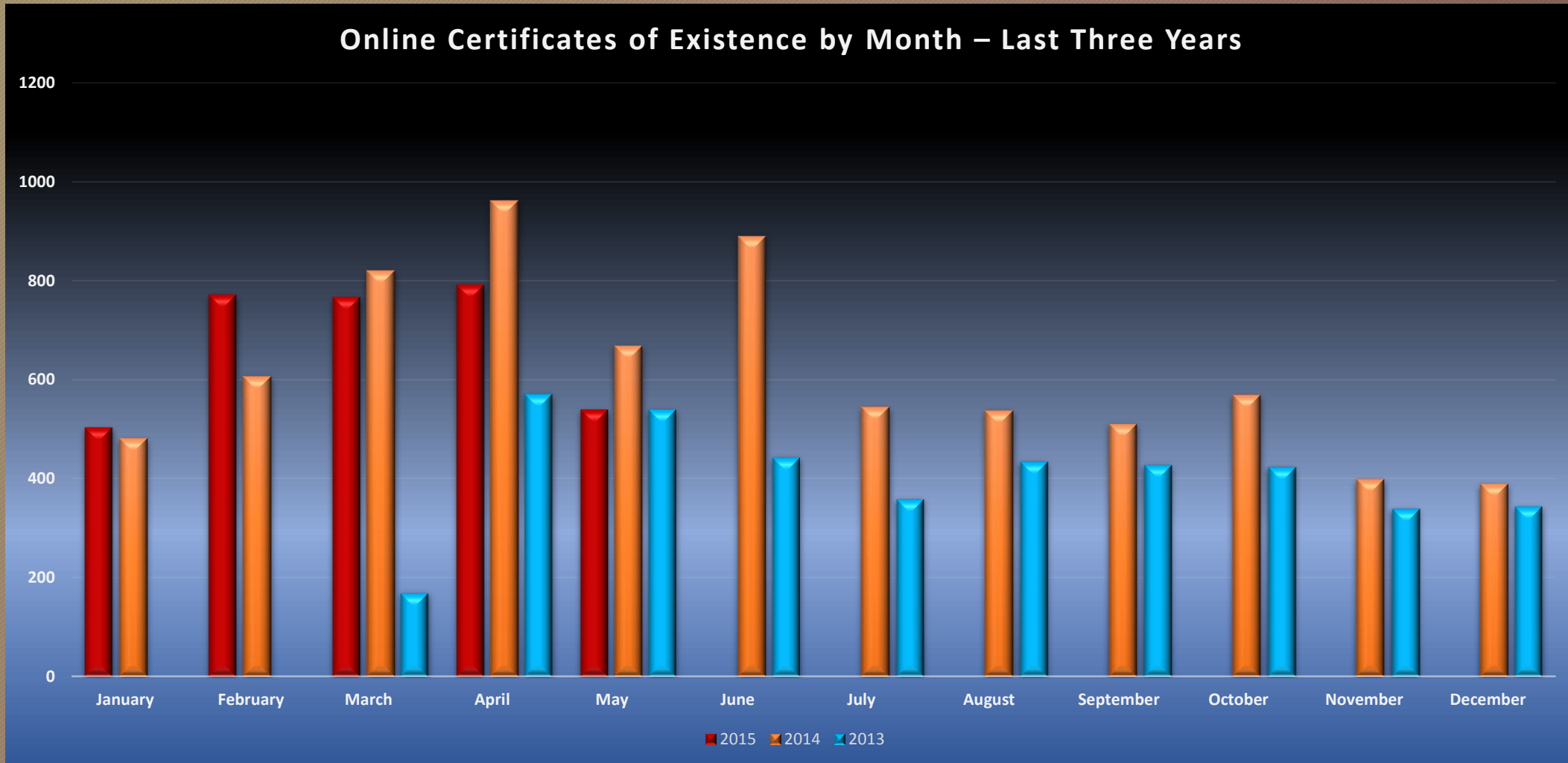


Online Good Standings - Month by Month

Online Certificates of Good Standing by Month – Last Five Years



Online Certificates of Existence - Month by Month



Work Hours Vs. Off-Hours Comparison

