



Estado Libre Asociado de Puerto Rico

Departamento de Estado

Informe estadístico del Registro de Corporaciones

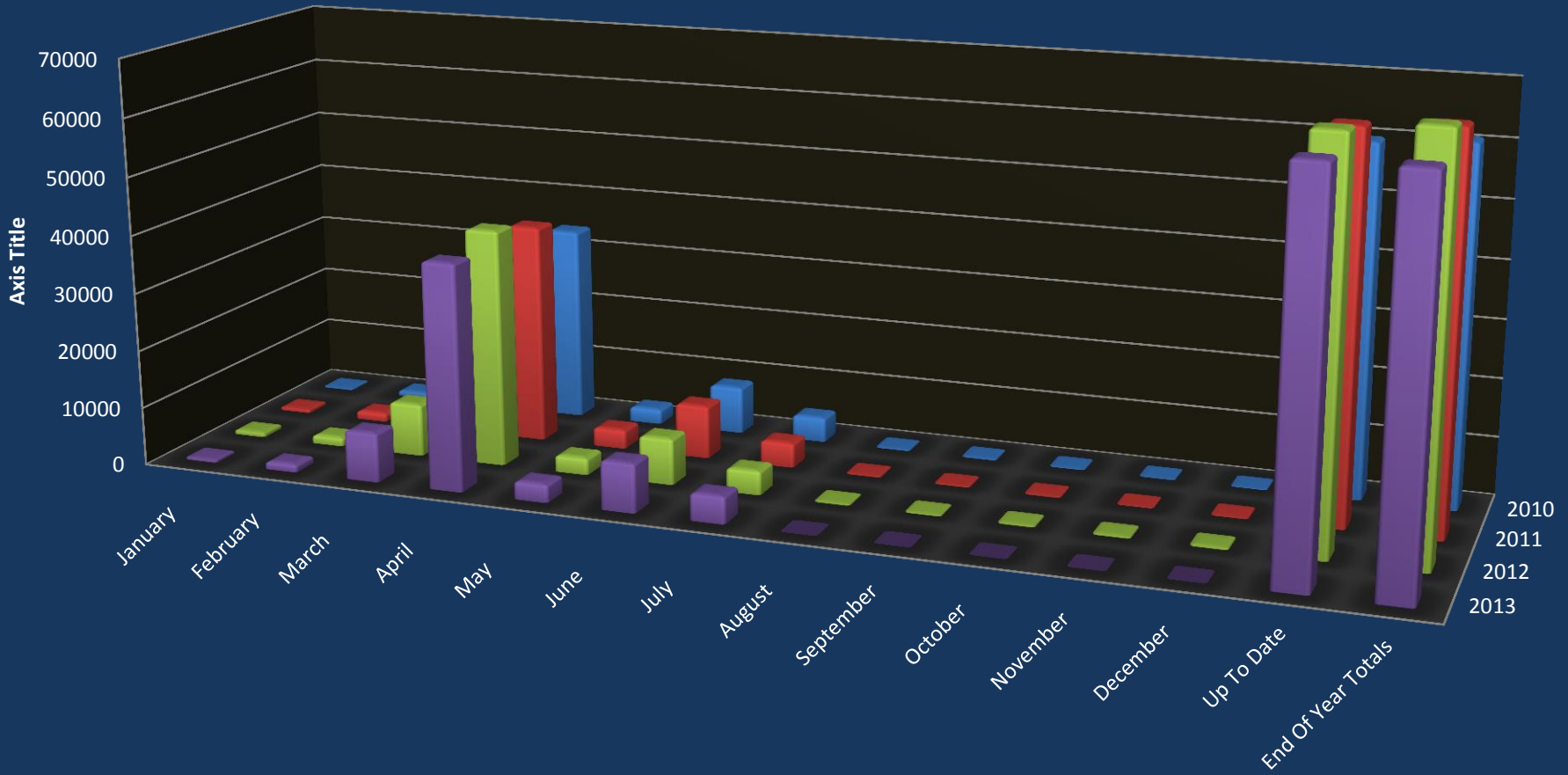
Data							
(Annual Reports/Annual Dues Comparison)							
YEAR	PROFIT	%	NON-PROFIT	%	LLC	%	TOTALS
2009	13,725	81%	2,431	14%	768	5%	16,924
2010	50,161	82%	9,235	15%	1,536	3%	60,932
2011	52,417	79%	10,478	16%	3,457	5%	66,352
2012	53,418	77%	10,825	16%	4,915	7%	69,158
2013	49,627	75%	9,921	15%	6,416	10%	65,964
DIFF:10-09	36,436	265%	6,804	280%	768	100%	44,008
DIFF:11-10	2,256	4%	1,243	13%	1,921	125%	5,420
DIFF:12-11	1,001	2%	347	3%	1,458	42%	2,806
DIFF:13-12	-3,791	-7%	-904	-8%	1,501	31%	-3,194

New Creations by Class		Distribution of Hours				
Class	%				Qty.	%
CLOSE_CORPORATION	8.62%	Total Creations Filed			40,943	
CORPORATION	68.15%	Business hours (8-5)			28,815	70.4%
LIMITED_LIABILITY_COMPANY	18.39%	Off Business hours except SAT and SUN			8,372	20.4%
LIMITED_LIABILITY_PARTNERSHIP	0.23%	SAT and SUN			3,756	9.2%
MUNICIPAL_DEVELOPMENT	0.01%	Certificates of Good Standing				
PROFESSIONAL_CORPORATION	4.57%	Year	Paper	Online	Combined	
SPECIAL_EMPLOYEE_OWNED	0.03%	2010	13,593	134	13,727	
TOTAL	100.00%	2011	13,304	4,851	18,155	
		2012	5,116	18,554	23,670	
		2013	3,037	27,242	30,279	
		2014	901	21,812	22,713	

Online New Creations				New Creations Comparison (Paper VS Online)			
Month-Year	For Profit	Non Profit	Sub Total	Month-Year	Online	Paper	Combined
May-11	483	204	687	May-11	687	697	1,384
Jun-11	748	300	1,048	Jun-11	1,048	375	1,423
Jul-11	607	291	898	Jul-11	898	303	1,201
Aug-11	640	240	880	Aug-11	880	289	1,169
Sep-11	721	324	1,045	Sep-11	1,045	371	1,416
Oct-11	728	328	1,056	Oct-11	1,056	272	1,328
Nov-11	638	275	913	Nov-11	913	189	1,102
Dec-11	597	208	805	Dec-11	805	196	1,001
Jan-12	796	342	1,138	Jan-12	1,138	138	1,276
Feb-12	795	372	1,167	Feb-12	1,167	155	1,322
Mar-12	884	339	1,223	Mar-12	1,223	189	1,412
Apr-12	744	317	1,061	Apr-12	1,061	177	1,238
May-12	883	311	1,194	May-12	1,194	186	1,380
Jun-12	803	313	1,116	Jun-12	1,116	134	1,250
Jul-12	662	275	937	Jul-12	937	115	1,052
Aug-12	806	307	1,113	Aug-12	1,113	115	1,228
Sep-12	770	288	1,058	Sep-12	1,058	103	1,161
Oct-12	854	302	1,156	Oct-12	1,156	105	1,261
Nov-12	556	211	767	Nov-12	767	71	838

Online New Creations				New Creations Comparison (Paper VS Online)			
Dec-12	600	233	833	Dec-12	833	77	910
Jan-13	1,027	296	1,323	Jan-13	1,323	116	1,439
Feb-13	910	387	1,297	Feb-13	1,297	104	1,401
Mar-13	835	342	1,177	Mar-13	1,177	115	1,292
Apr-13	879	373	1,252	Apr-13	1,252	153	1,405
May-13	893	323	1,216	May-13	1,216	144	1,360
Jun-13	784	292	1,076	Jun-13	1,076	116	1,192
Jul-13	748	251	999	Jul-13	999	105	1,104
Aug-13	925	319	1,244	Aug-13	1,244	123	1,367
Sep-13	763	277	1,040	Sep-13	1,040	98	1,138
Oct-13	777	284	1,061	Oct-13	1,061	111	1,172
Nov-13	596	221	817	Nov-13	817	100	917
Dec-13	600	188	788	Dec-13	788	108	896
Jan-14	848	302	1,150	Jan-14	1,150	117	1,267
Feb-14	773	275	1,048	Feb-14	1,048	124	1,172
Mar-14	906	333	1,239	Mar-14	1,239	107	1,346
Apr-14	769	319	1,088	Apr-14	1,088	87	1,175
May-14	920	293	1,213	May-14	1213	87	1,300
Jun-14	849	266	1,115	Jun-14	1115	106	1,221
Jul-14	537	175	712	Jul-14	712	48	760

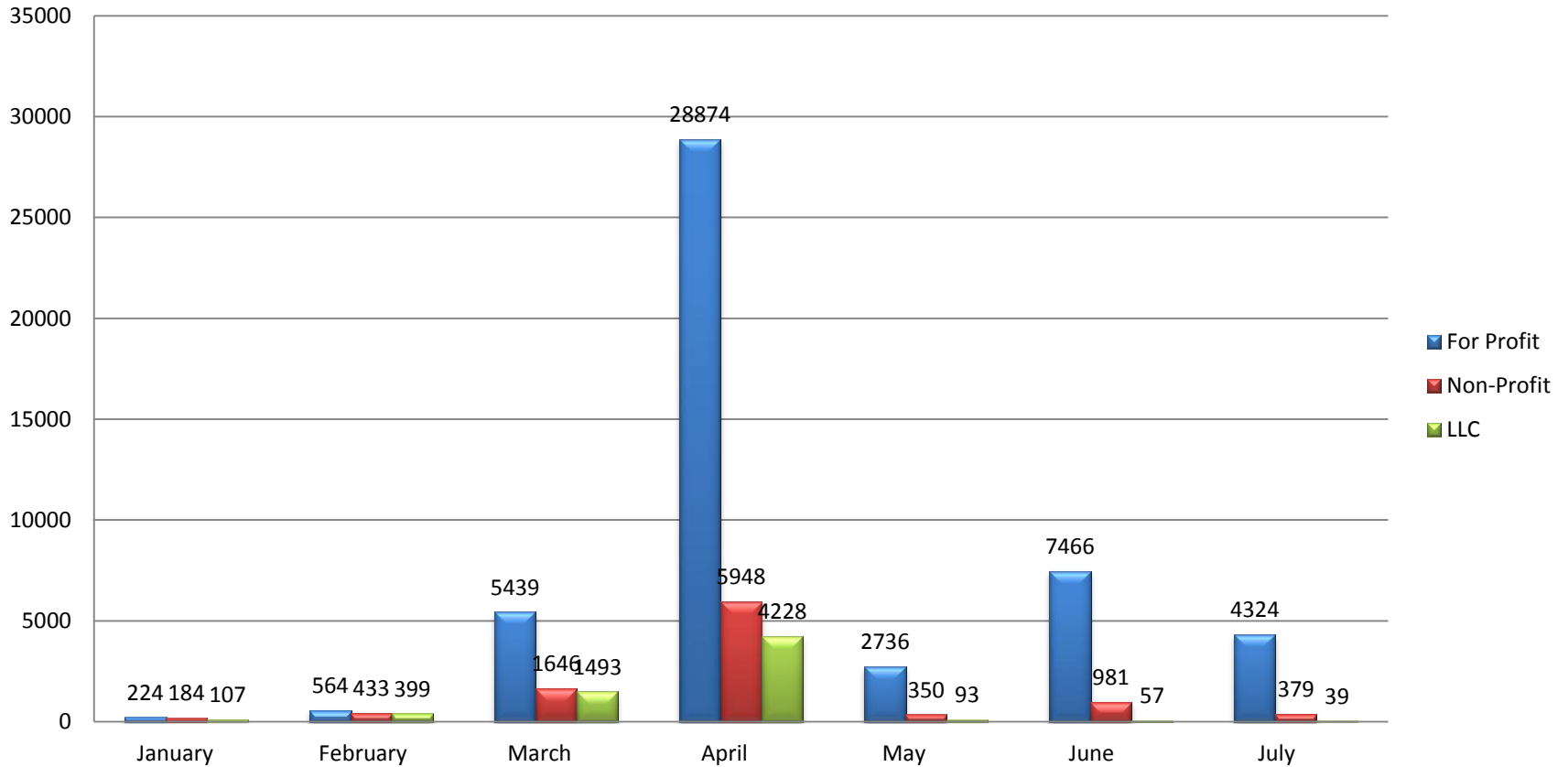
2013 Annual Report / Annual Dues



	January	February	March	April	May	June	July	August	September	October	November	December	Up To Date	End Of Year Totals
2013	515	1396	8578	39050	3179	8504	4742	0	0	0	0	0	65964	65964
2012	800	1529	9115	40975	2939	8009	4146	299	283	317	340	406	67513	69158
2011	618	1505	8253	38104	3333	9217	4307	251	198	239	132	195	65337	66352
2010	265	971	9566	33930	2636	8229	4315	239	260	205	171	145	59912	60932

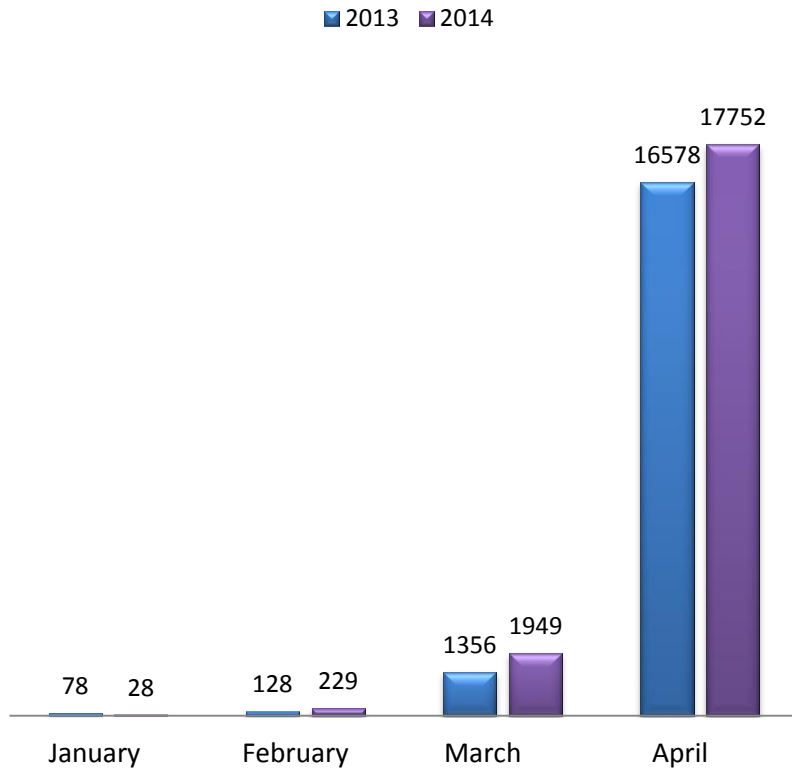
Current Filing Season

2013 Season - Annual Report/Due

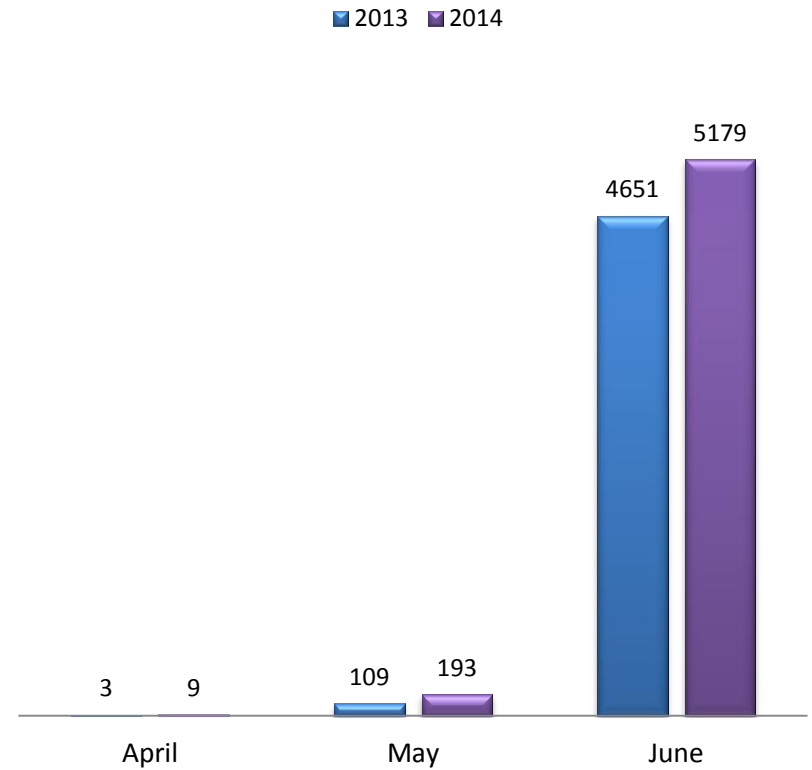


Extensions Two-Year Comparison

First Extension (Prórrogas) Two-Years Comparison

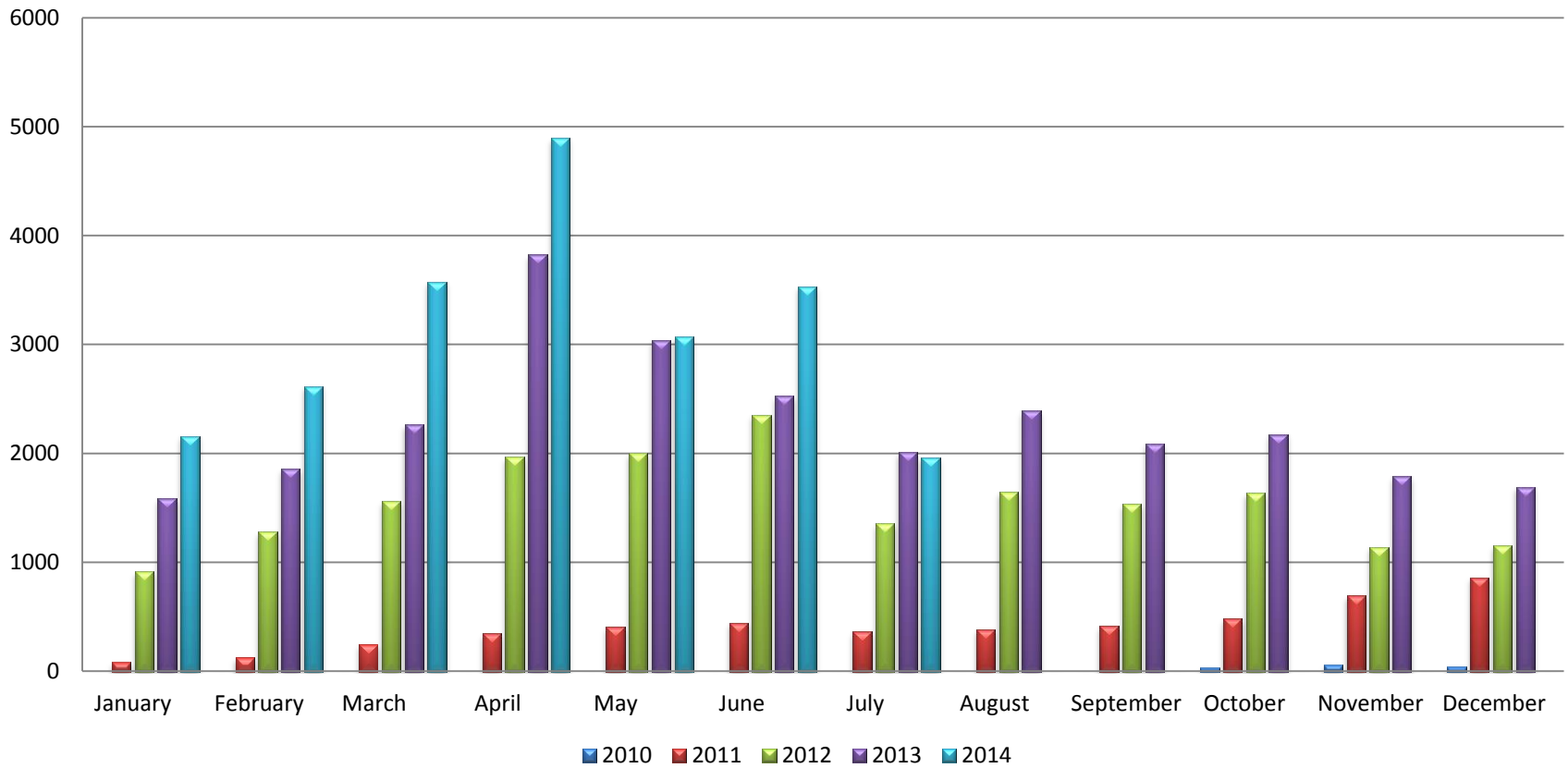


Second Extension (Prórrogas) Two-Years Comparison



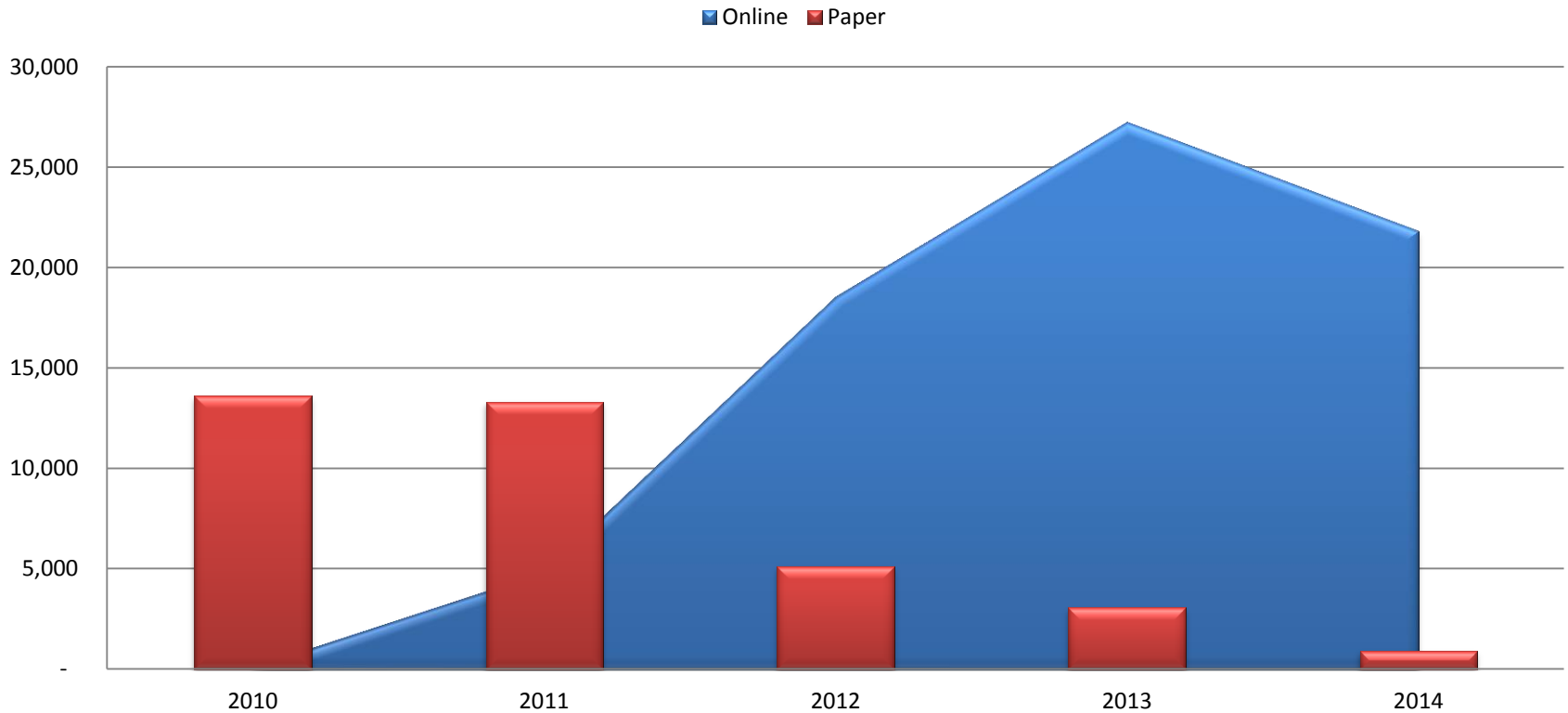
Online Certificates of Good Standings Multi-Years Comparison

Online Goodstanding



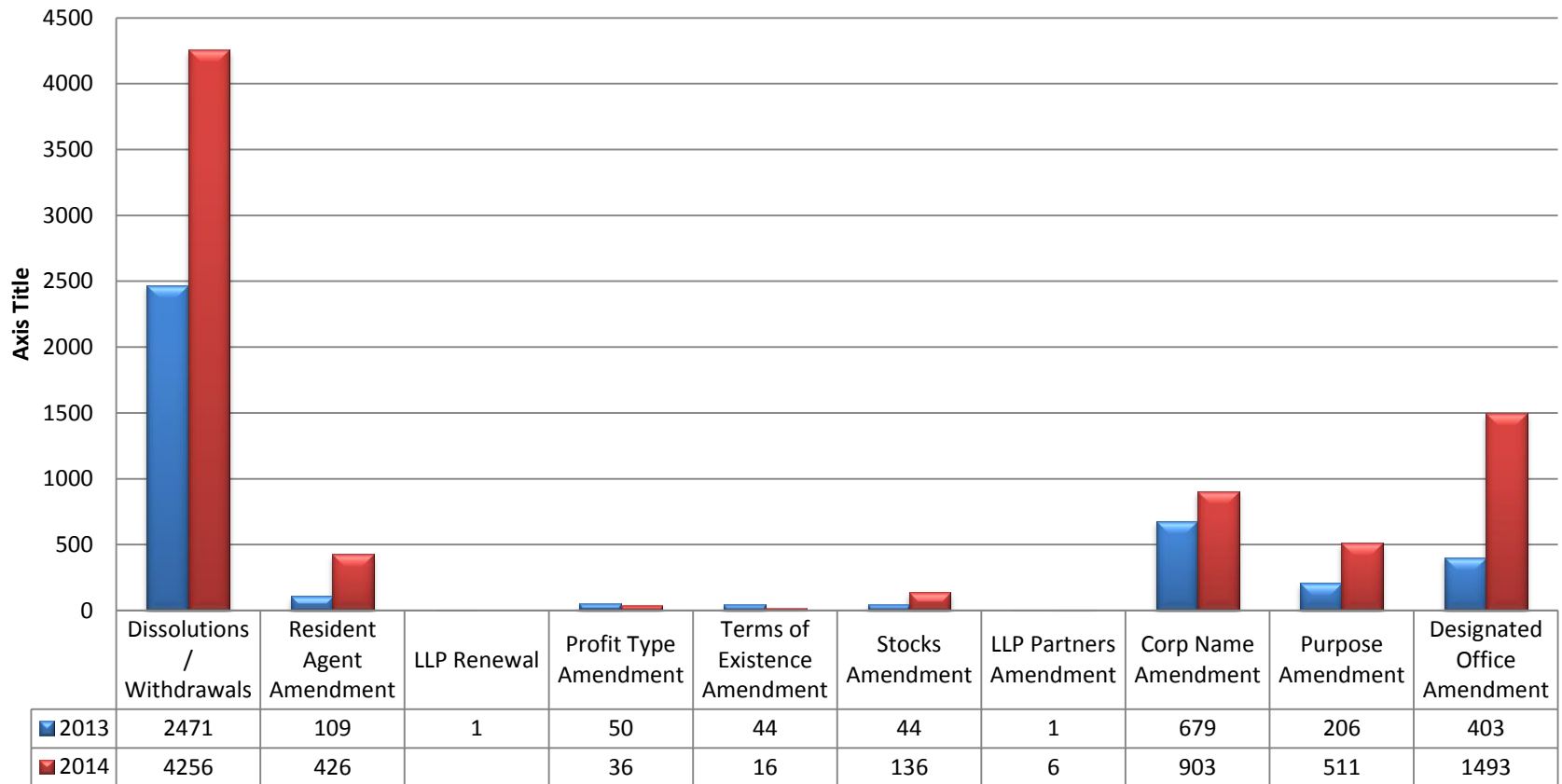
Certificates of Good Standings Comparison

Goodstanding Certificates Online vs Paper

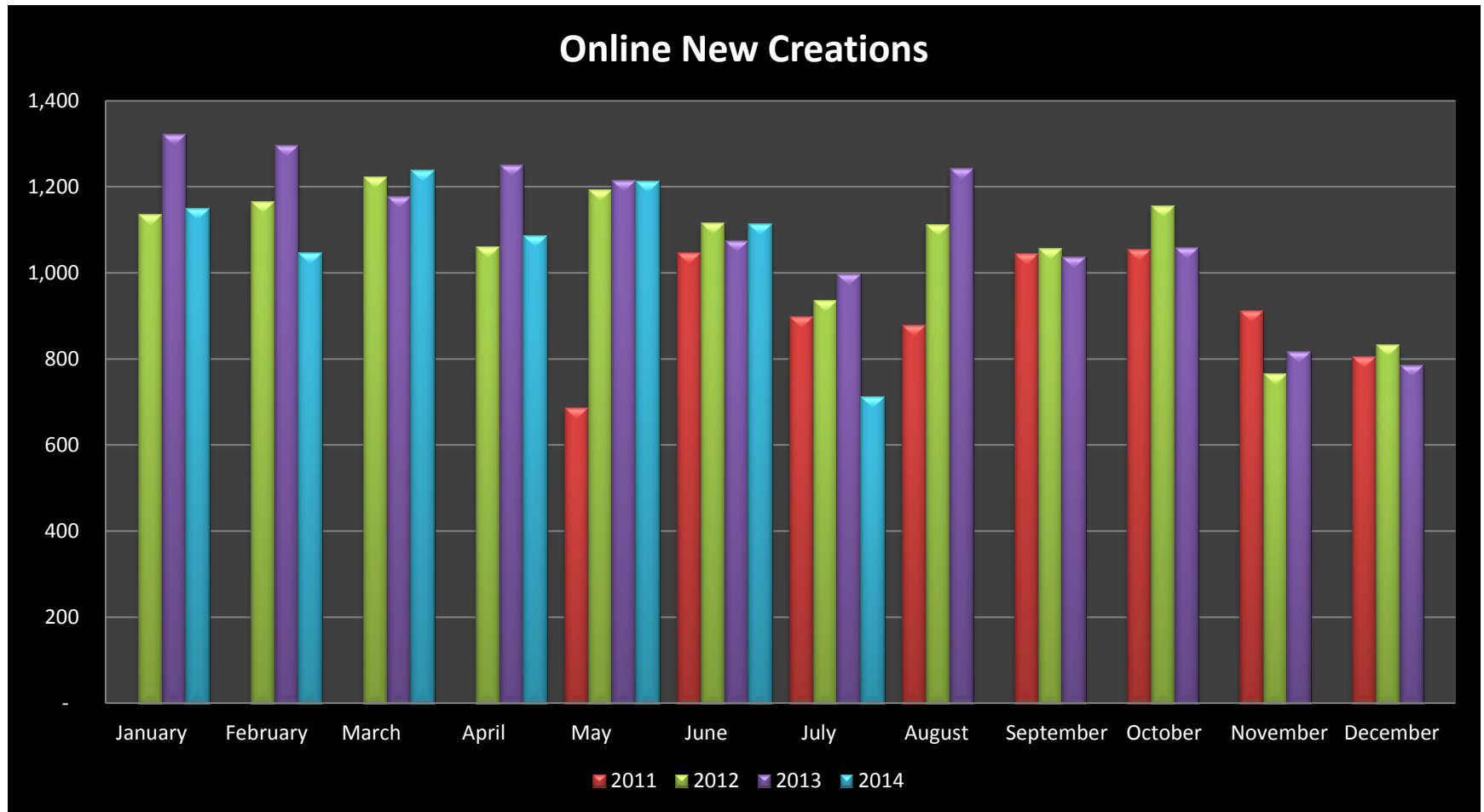


New Online Transactions

Additional Online Transactions



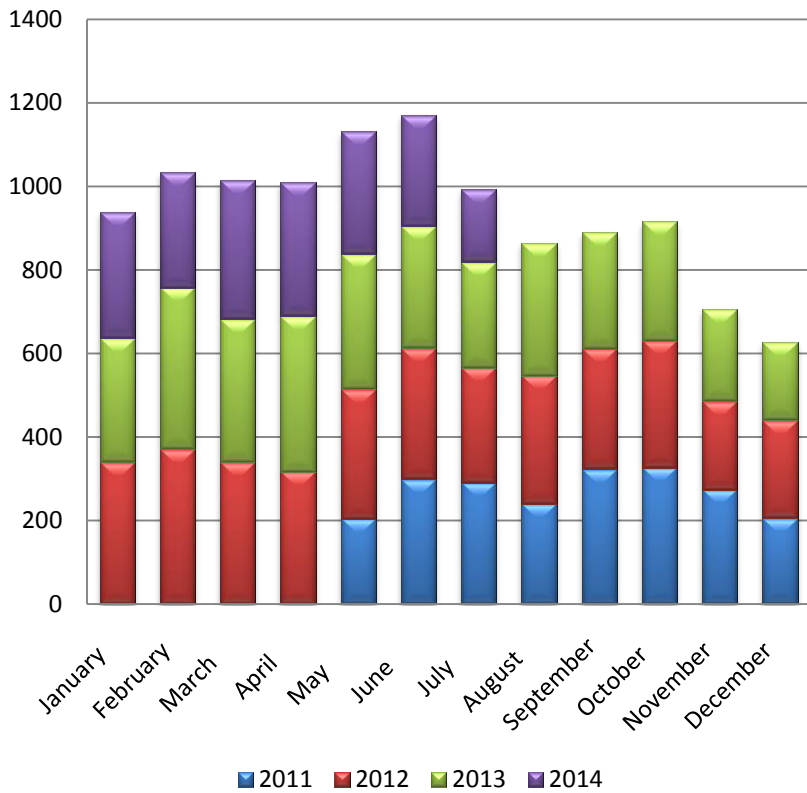
Multi-Years* Online New Creations Trend



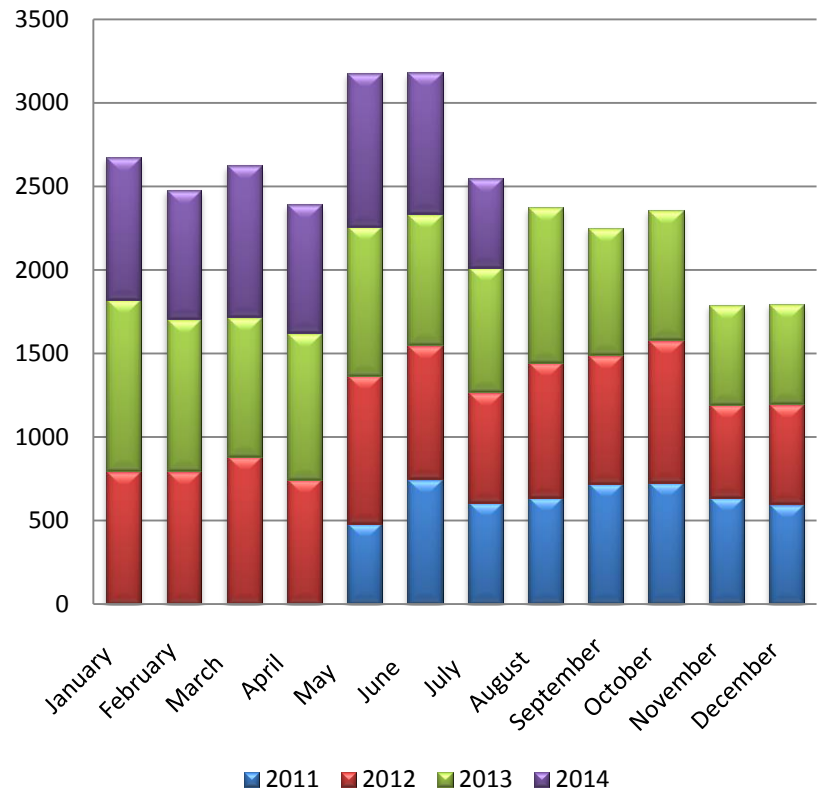
*Online New Creations Started on May 2011

Online New Creations by Type

Non-Profits

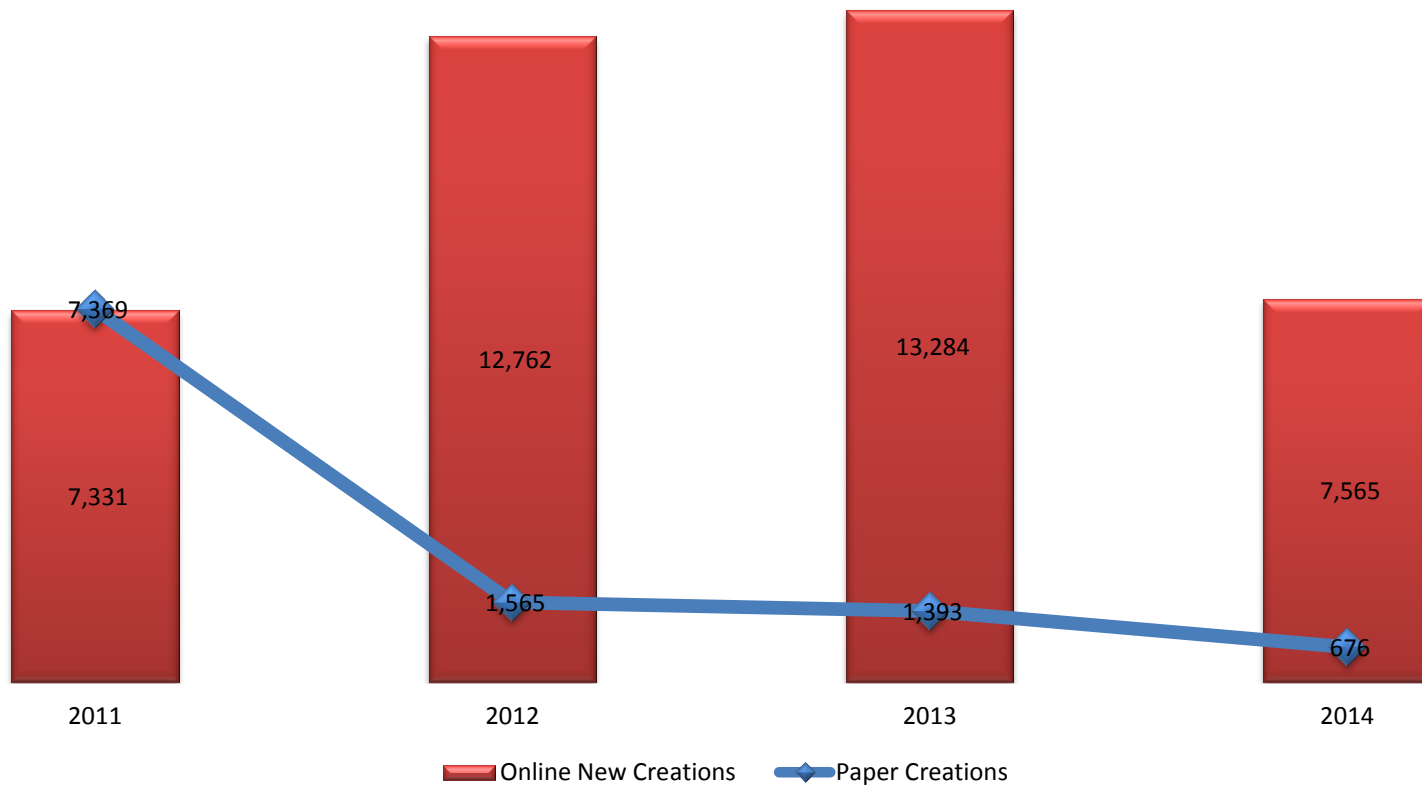


For Profits



New Creations Comparison

Online vs Paper New Creations





Marvin R. Márquez

General Manager-Puerto Rico
File ONE LLC.
c. (787) 309-8382

p. (919) 854-4123 X198

<http://www.fileoneinc.com>
mmarquez@fileoneinc.com

Recibido: 23 de julio de 2014