



Estado Libre Asociado de Puerto Rico

## Departamento de Estado

# Informe estadístico del Registro de Corporaciones

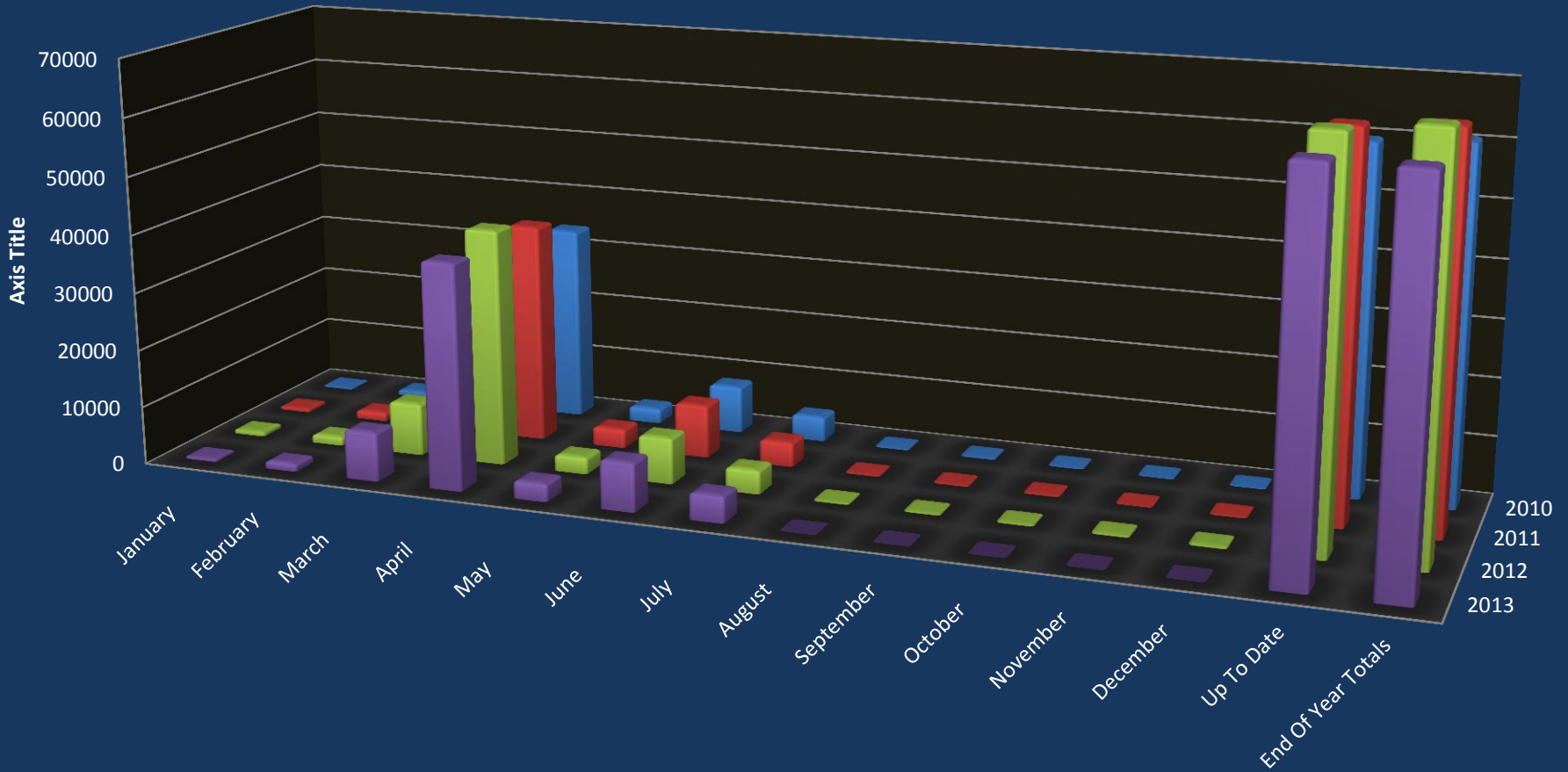
| <b>Data</b>                                    |               |          |                   |          |            |          |               |
|--|---------------|----------|-------------------|----------|------------|----------|---------------|
| <b>(Annual Reports/Annual Dues Comparison)</b> |               |          |                   |          |            |          |               |
| <b>YEAR</b>                                    | <b>PROFIT</b> | <b>%</b> | <b>NON-PROFIT</b> | <b>%</b> | <b>LLC</b> | <b>%</b> | <b>TOTALS</b> |
| 2009   | 13,725        | 81%      | 2,431             | 14%      | 768        | 5%       | 16,924        |
| 2010   | 50,161        | 82%      | 9,234             | 15%      | 1,536      | 3%       | 60,931        |
| 2011   | 52,415        | 79%      | 10,477            | 16%      | 3,457      | 5%       | 66,349        |
| 2012   | 53,415        | 77%      | 10,822            | 16%      | 4,915      | 7%       | 69,152        |
| 2013   | 49,588        | 75%      | 9,909             | 15%      | 6,412      | 10%      | 65,909        |
| DIFF:10-09                                     | 36,436        | 265%     | 6,803             | 280%     | 768        | 100%     | 44,007        |
| DIFF:11-10                                     | 2,254         | 4%       | 1,243             | 13%      | 1,921      | 125%     | 5,418         |
| DIFF:12-11                                     | 1,000         | 2%       | 345               | 3%       | 1,458      | 42%      | 2,803         |
| DIFF:13-12                                     | -3,827        | -7%      | -913              | -8%      | 1,497      | 30%      | -3,243        |

| New Creations by Class        |         | Distribution of Hours                 |        |        |          |
|-------------------------------|---------|---------------------------------------|--------|--------|----------|
| Class                         | %       |                                       |        | Qty.   | %        |
| CLOSE_CORPORATION             | 8.63%   | Total Creations Filed                 |        | 40,817 |          |
| CORPORATION                   | 68.15%  | Business hours (8-5)                  |        | 28,735 | 70.4%    |
| LIMITED_LIABILITY_COMPANY     | 18.37%  | Off Business hours except SAT and SUN |        | 8,342  | 20.4%    |
| LIMITED_LIABILITY_PARTNERSHIP | 0.23%   | SAT and SUN                           |        | 3,740  | 9.2%     |
| MUNICIPAL_DEVELOPMENT         | 0.01%   | Certificates of Good Standing         |        |        |          |
| PROFESSIONAL_CORPORATION      | 4.57%   | Year                                  | Paper  | Online | Combined |
| SPECIAL_EMPLOYEE_OWNED        | 0.03%   | 2010                                  | 13,593 | 134    | 13,727   |
| TOTAL                         | 100.00% | 2011                                  | 13,304 | 4,851  | 18,155   |
|                               |         | 2012                                  | 5,116  | 18,554 | 23,670   |
|                               |         | 2013                                  | 3,037  | 27,242 | 30,279   |
|                               |         | 2014                                  | 867    | 21,514 | 22,381   |

| Online New Creations |            |            |           | New Creations Comparison (Paper VS Online) |        |       |          |
|----------------------|------------|------------|-----------|--|--------|-------|----------|
| Month-Year           | For Profit | Non Profit | Sub Total | Month-Year                                 | Online | Paper | Combined |
| May-11               | 483        | 204        | 687       | May-11                                     | 687    | 697   | 1,384    |
| Jun-11               | 748        | 300        | 1,048     | Jun-11                                     | 1,048  | 375   | 1,423    |
| Jul-11               | 607        | 291        | 898       | Jul-11                                     | 898    | 303   | 1,201    |
| Aug-11               | 640        | 240        | 880       | Aug-11                                     | 880    | 289   | 1,169    |
| Sep-11               | 721        | 324        | 1,045     | Sep-11                                     | 1,045  | 371   | 1,416    |
| Oct-11               | 728        | 328        | 1,056     | Oct-11                                     | 1,056  | 272   | 1,328    |
| Nov-11               | 638        | 275        | 913       | Nov-11                                     | 913    | 189   | 1,102    |
| Dec-11               | 597        | 208        | 805       | Dec-11                                     | 805    | 196   | 1,001    |
| Jan-12               | 796        | 342        | 1,138     | Jan-12                                     | 1,138  | 138   | 1,276    |
| Feb-12               | 795        | 372        | 1,167     | Feb-12                                     | 1,167  | 155   | 1,322    |
| Mar-12               | 884        | 339        | 1,223     | Mar-12                                     | 1,223  | 189   | 1,412    |
| Apr-12               | 744        | 317        | 1,061     | Apr-12                                     | 1,061  | 177   | 1,238    |
| May-12               | 883        | 311        | 1,194     | May-12                                     | 1,194  | 186   | 1,380    |
| Jun-12               | 803        | 313        | 1,116     | Jun-12                                     | 1,116  | 134   | 1,250    |
| Jul-12               | 662        | 275        | 937       | Jul-12                                     | 937    | 115   | 1,052    |
| Aug-12               | 806        | 307        | 1,113     | Aug-12                                     | 1,113  | 115   | 1,228    |
| Sep-12               | 770        | 288        | 1,058     | Sep-12                                     | 1,058  | 103   | 1,161    |
| Oct-12               | 854        | 302        | 1,156     | Oct-12                                     | 1,156  | 105   | 1,261    |
| Nov-12               | 556        | 211        | 767       | Nov-12                                     | 767    | 71    | 838      |

| Online New Creations |       |     |       | New Creations Comparison (Paper VS Online) |       |     |       |
|----------------------|-------|-----|-------|--|-------|-----|-------|
| Dec-12               | 600   | 233 | 833   | Dec-12                                     | 833   | 77  | 910   |
| Jan-13               | 1,027 | 296 | 1,323 | Jan-13                                     | 1,323 | 116 | 1,439 |
| Feb-13               | 910   | 387 | 1,297 | Feb-13                                     | 1,297 | 104 | 1,401 |
| Mar-13               | 835   | 342 | 1,177 | Mar-13                                     | 1,177 | 115 | 1,292 |
| Apr-13               | 879   | 373 | 1,252 | Apr-13                                     | 1,252 | 153 | 1,405 |
| May-13               | 893   | 323 | 1,216 | May-13                                     | 1,216 | 144 | 1,360 |
| Jun-13               | 784   | 292 | 1,076 | Jun-13                                     | 1,076 | 116 | 1,192 |
| Jul-13               | 748   | 251 | 999   | Jul-13                                     | 999   | 105 | 1,104 |
| Aug-13               | 925   | 319 | 1,244 | Aug-13                                     | 1,244 | 123 | 1,367 |
| Sep-13               | 763   | 277 | 1,040 | Sep-13                                     | 1,040 | 98  | 1,138 |
| Oct-13               | 777   | 284 | 1,061 | Oct-13                                     | 1,061 | 111 | 1,172 |
| Nov-13               | 596   | 221 | 817   | Nov-13                                     | 817   | 100 | 917   |
| Dec-13               | 600   | 188 | 788   | Dec-13                                     | 788   | 108 | 896   |
| Jan-14               | 848   | 302 | 1,150 | Jan-14                                     | 1,150 | 117 | 1,267 |
| Feb-14               | 773   | 275 | 1,048 | Feb-14                                     | 1,048 | 124 | 1,172 |
| Mar-14               | 906   | 333 | 1,239 | Mar-14                                     | 1,239 | 107 | 1,346 |
| Apr-14               | 769   | 319 | 1,088 | Apr-14                                     | 1,088 | 87  | 1,175 |
| May-14               | 920   | 293 | 1,213 | May-14                                     | 1,213 | 87  | 1,300 |
| Jun-14               | 849   | 266 | 1,115 | Jun-14                                     | 1,115 | 106 | 1,221 |
| Jul-14               | 447   | 139 | 586   | Jul-14                                     | 586   | 42  | 628   |

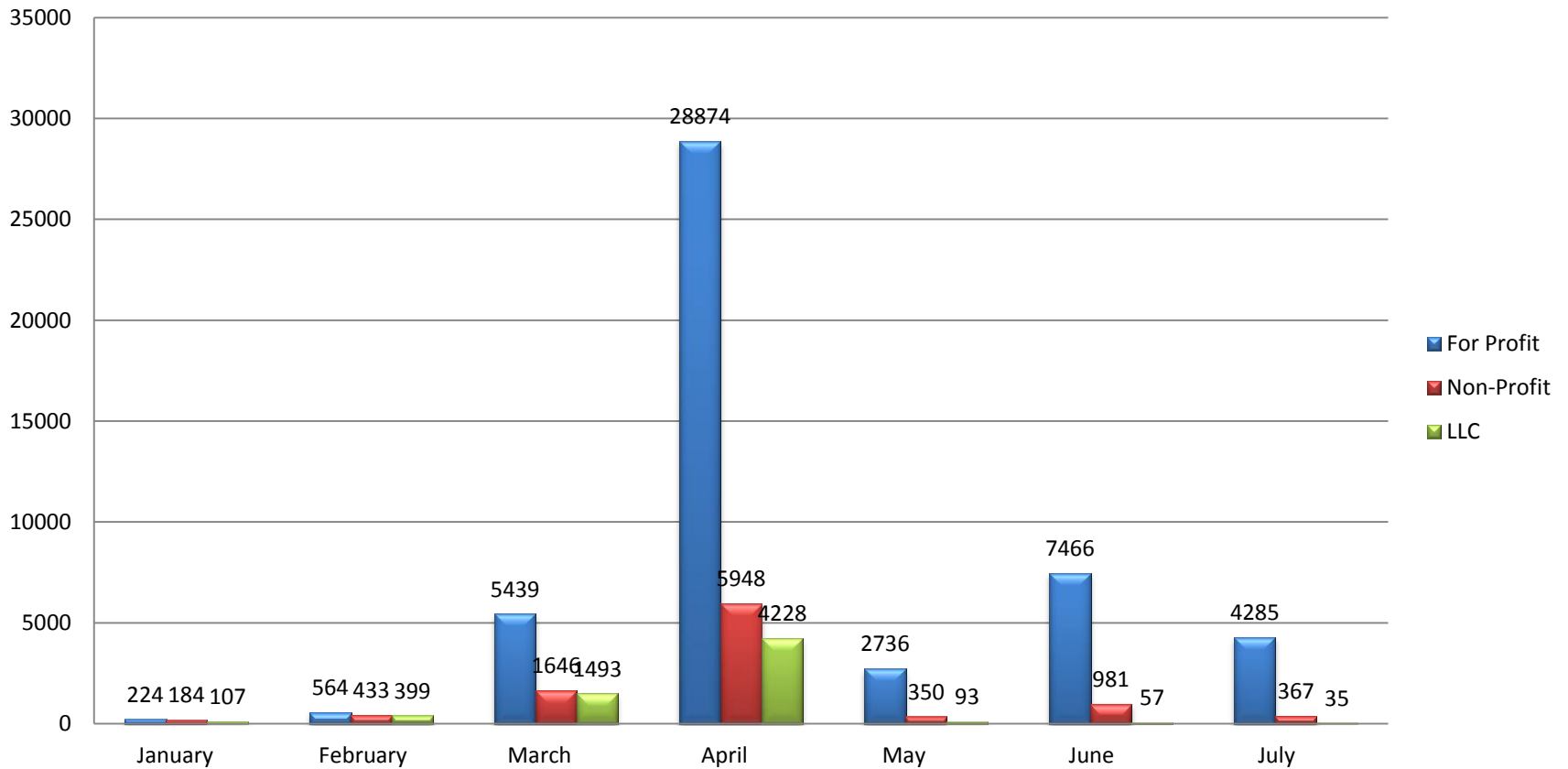
# 2013 Annual Report / Annual Dues



|      | January | February | March | April | May  | June | July | August | September | October | November | December | Up To Date | End Of Year Totals |
|------|---------|----------|-------|-------|------|------|------|--------|-----------|---------|----------|----------|------------|--------------------|
| 2013 | 515     | 1396     | 8578  | 39050 | 3179 | 8504 | 4687 | 0      | 0         | 0       | 0        | 0        | 65909      | 65909              |
| 2012 | 799     | 1529     | 9115  | 40975 | 2939 | 8009 | 4142 | 299    | 283       | 316     | 340      | 406      | 67508      | 69152              |
| 2011 | 618     | 1505     | 8253  | 38104 | 3332 | 9217 | 4305 | 251    | 198       | 239     | 132      | 195      | 65334      | 66349              |
| 2010 | 265     | 971      | 9566  | 33930 | 2636 | 8229 | 4314 | 239    | 260       | 205     | 171      | 145      | 59911      | 60931              |

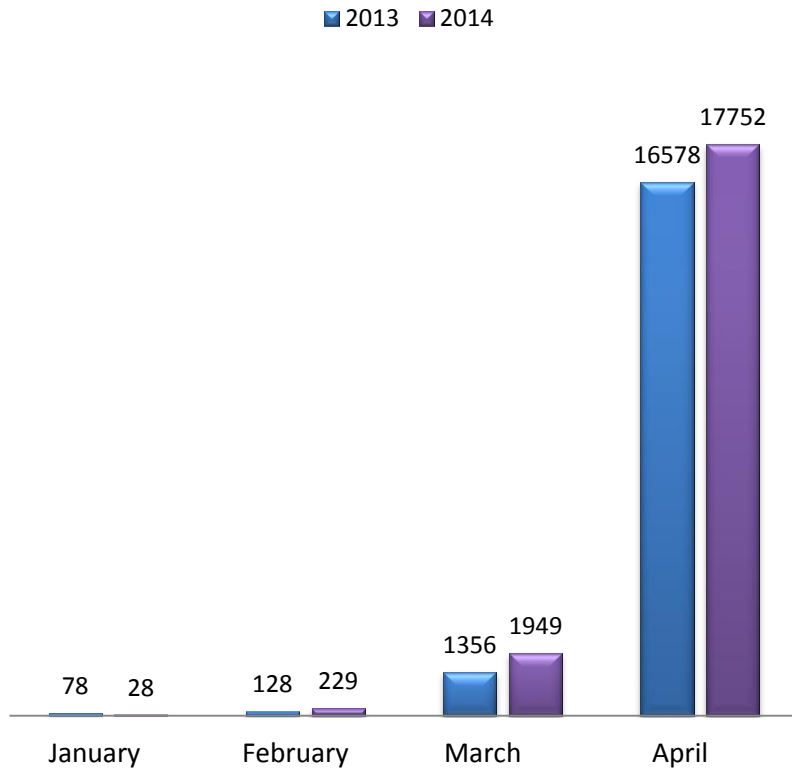
# Current Filing Season

## 2013 Season - Annual Report/Due

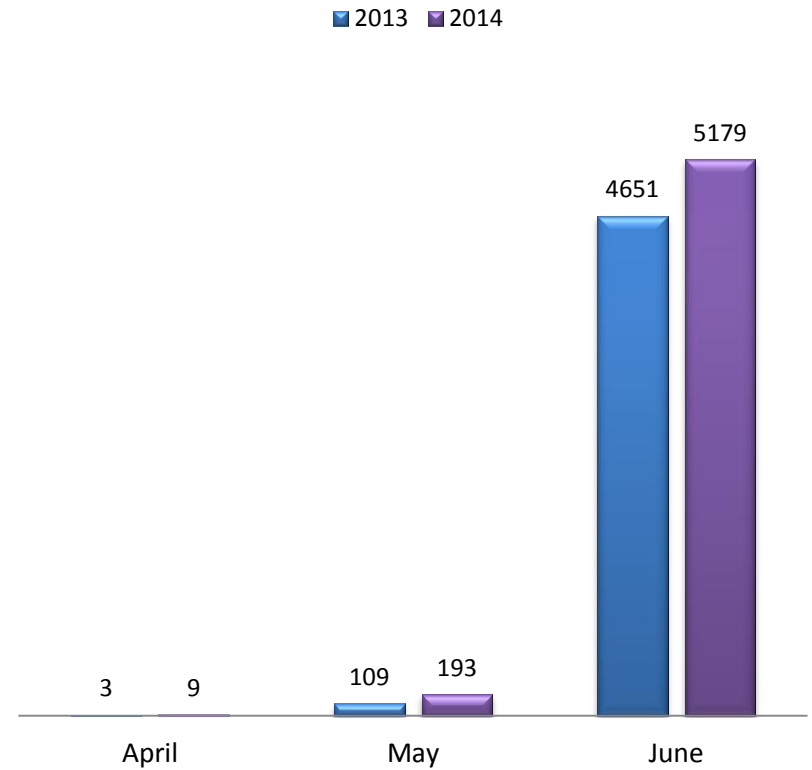


# Extensions Two-Year Comparison

## First Extension (Prórrogas) Two-Years Comparison

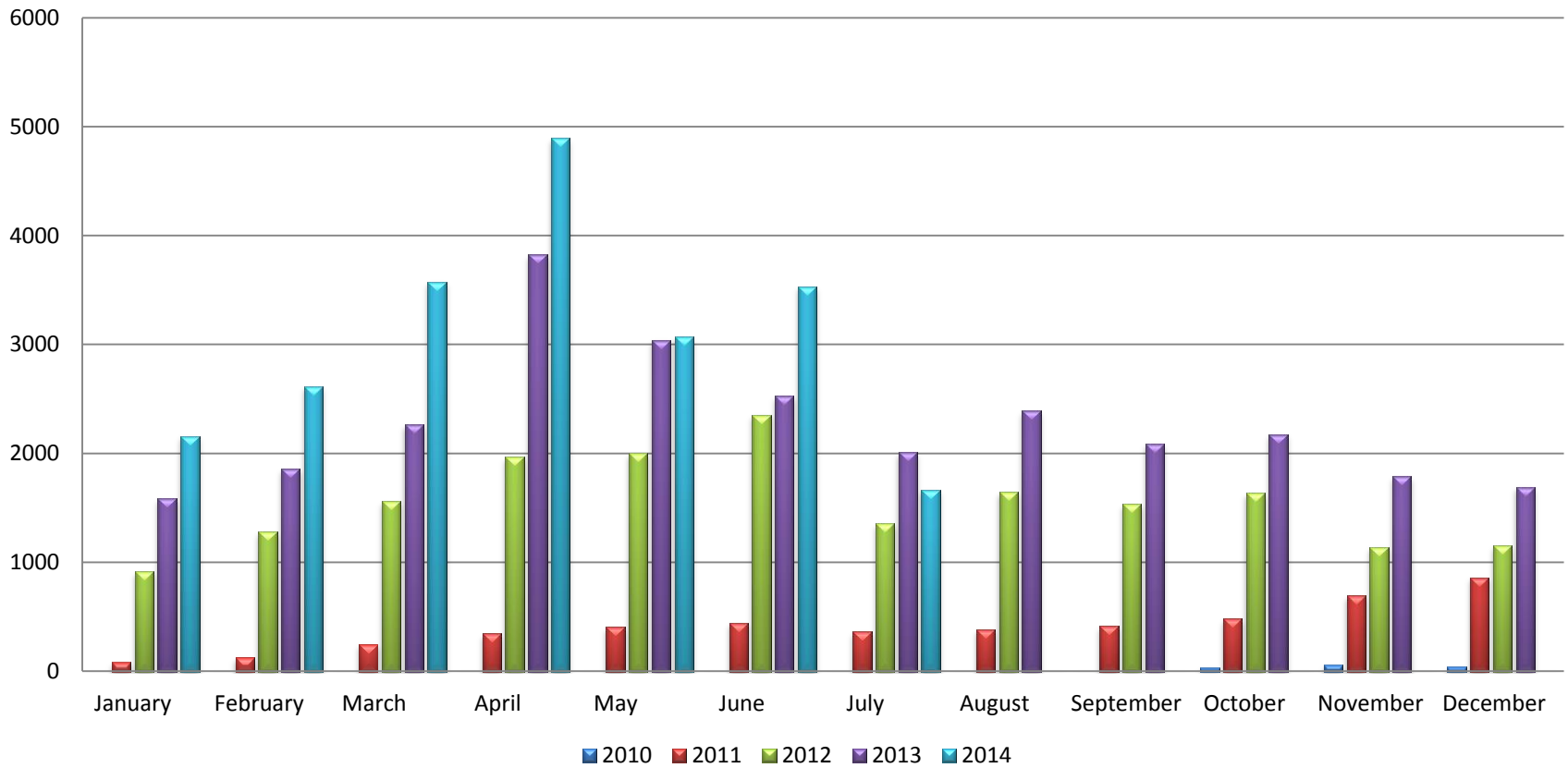


## Second Extension (Prórrogas) Two-Years Comparison



# Online Certificates of Good Standings Multi-Years Comparison

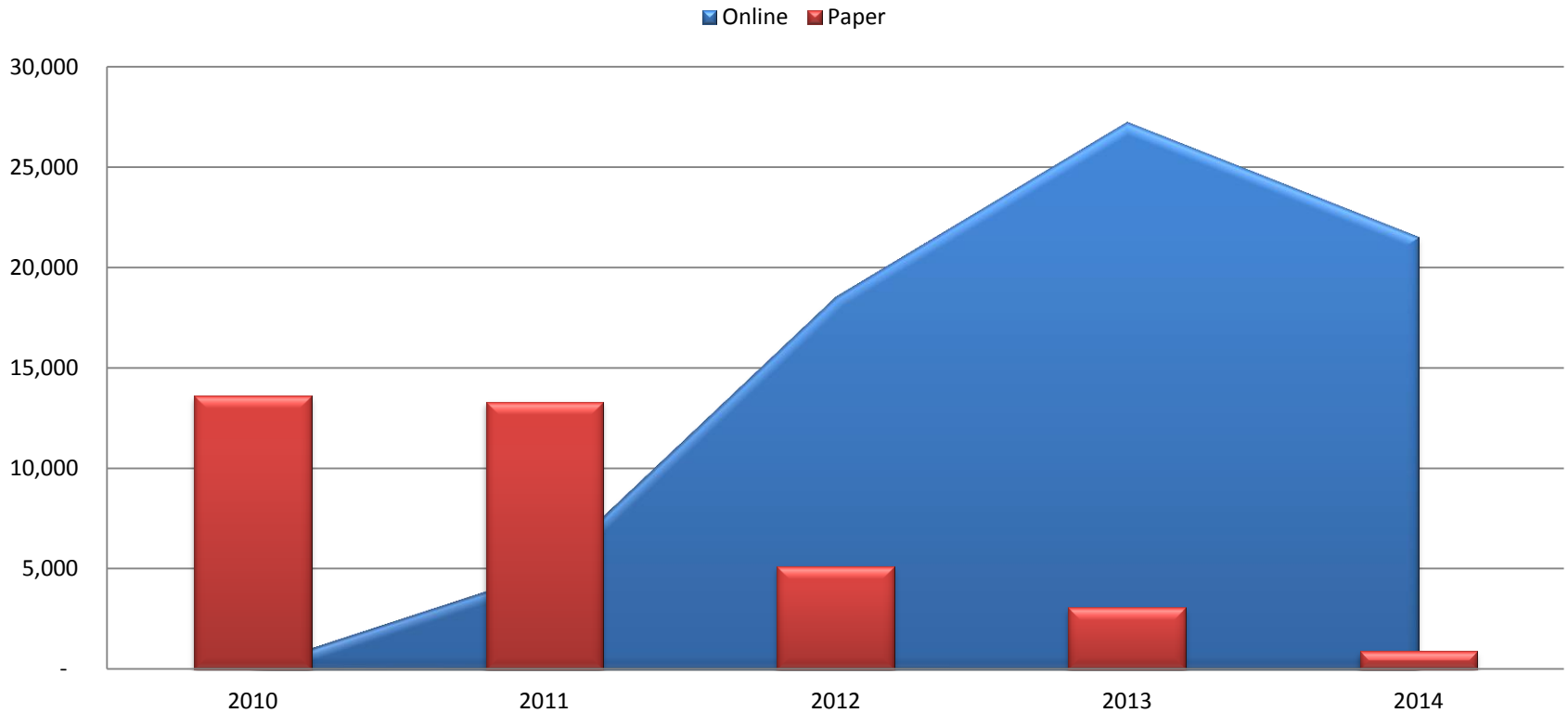
## Online Goodstanding





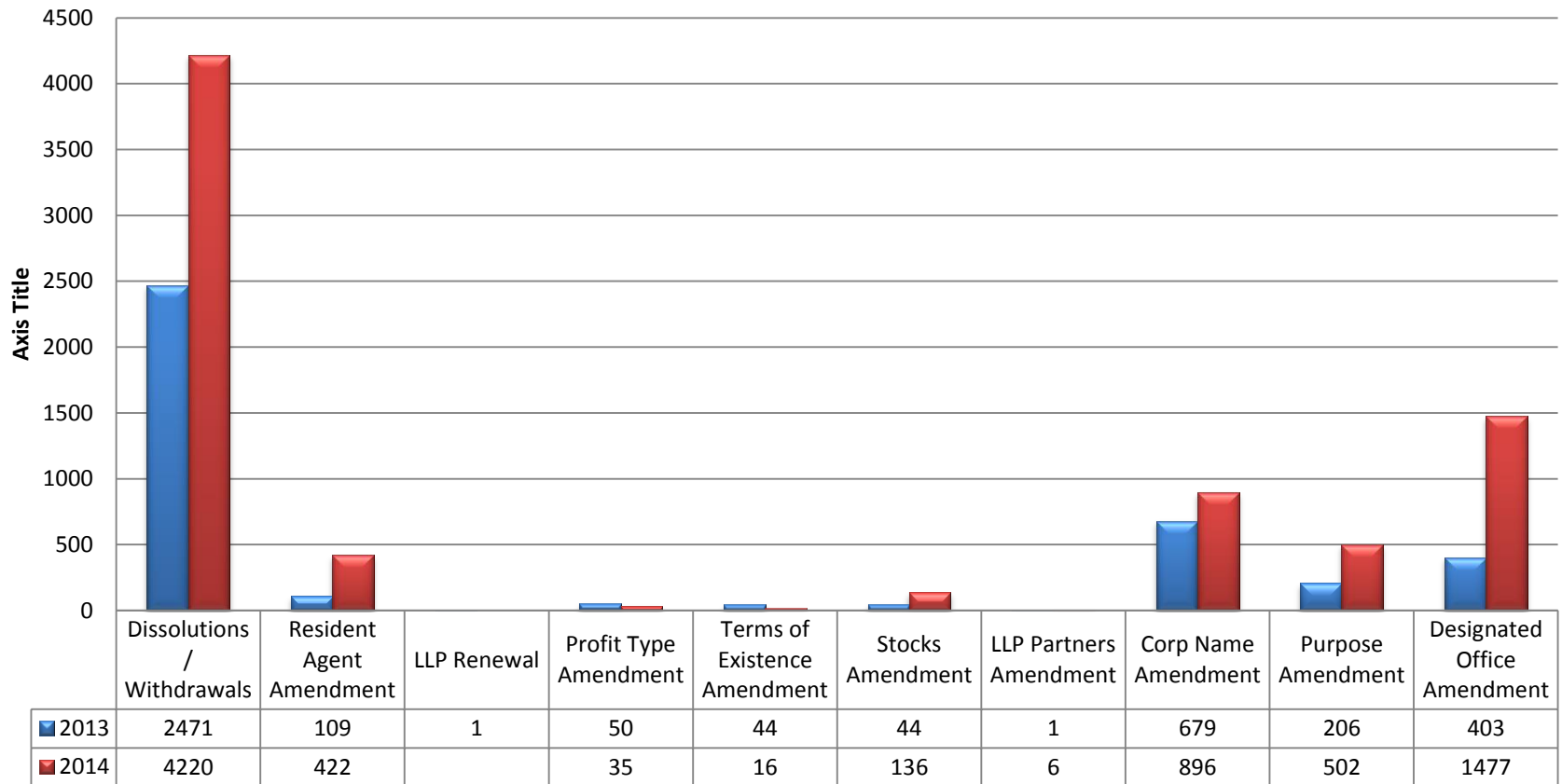
# Certificates of Good Standings Comparison

## Goodstanding Certificates Online vs Paper

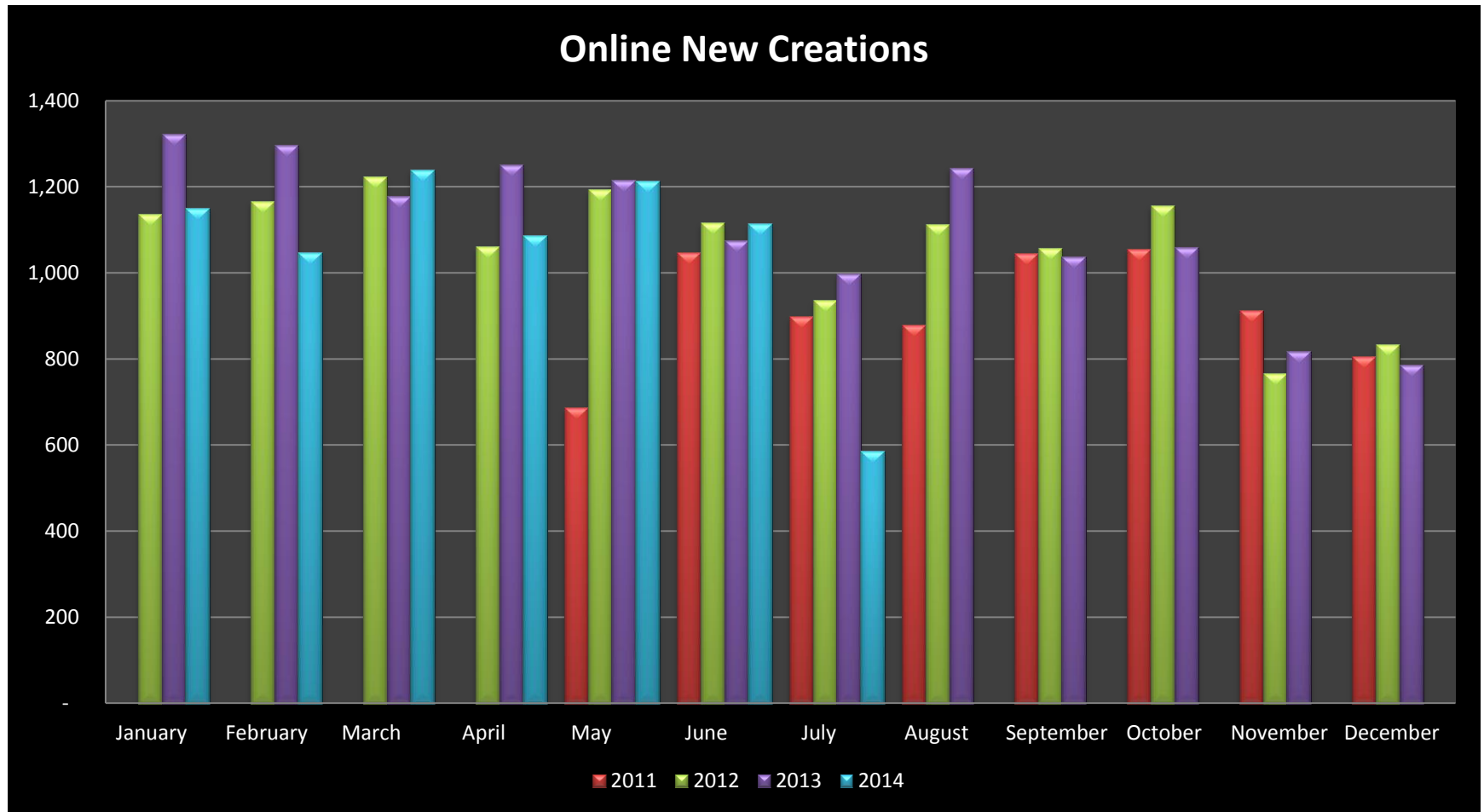


# New Online Transactions

## Additional Online Transactions



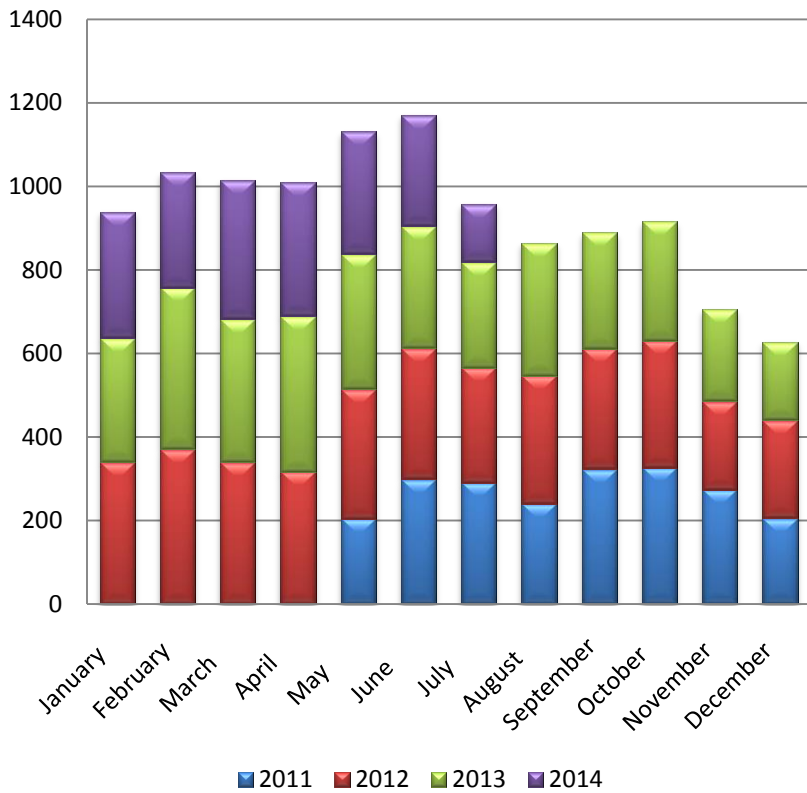
# Multi-Years\* Online New Creations Trend



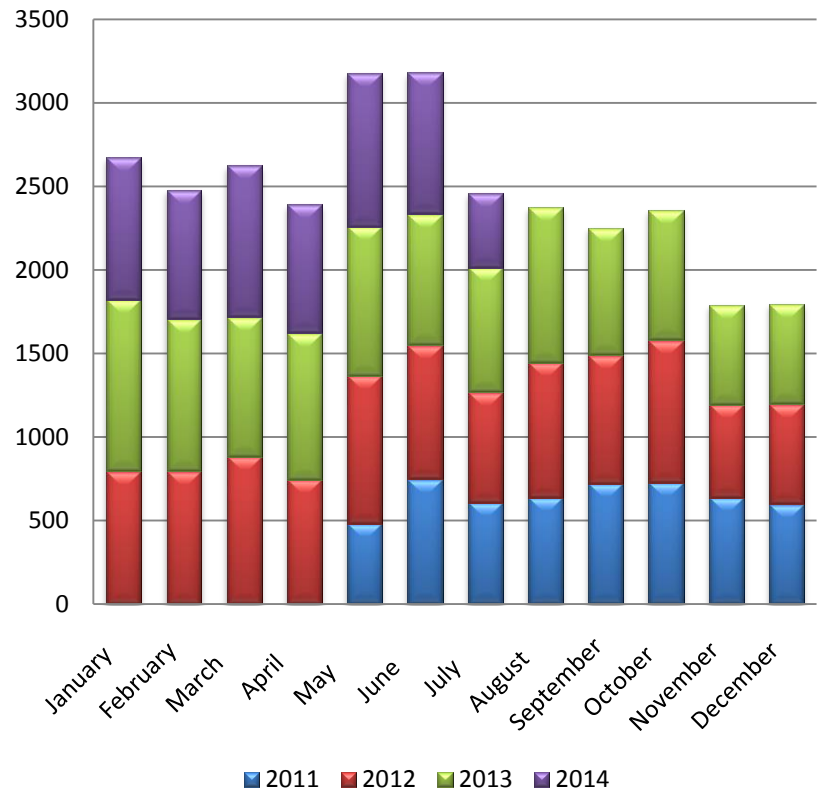
\*Online New Creations Started on May 2011

# Online New Creations by Type

## Non-Profits

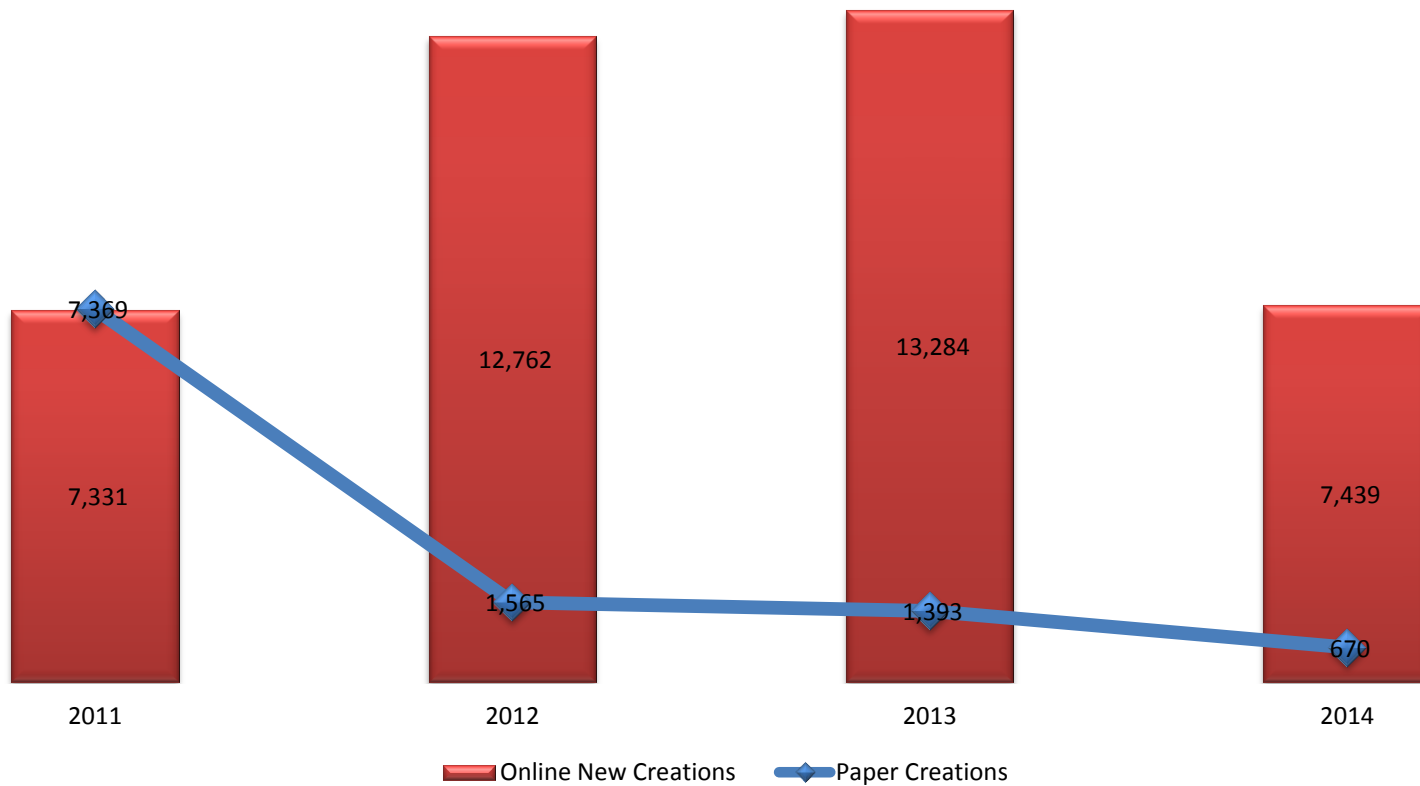


## For Profits



# New Creations Comparison

## Online vs Paper New Creations





**William Juarbe**

IT Coordinator

FileONE, LLC

Email:

[wjuarbe@fileoneinc.com](mailto:wjuarbe@fileoneinc.com)

Tel. (919) 854-4123 Ext. 185

Recibido: 18 de julio de 2014