



Estado Libre Asociado de Puerto Rico

Departamento de Estado

Informe estadístico del Registro de Corporaciones

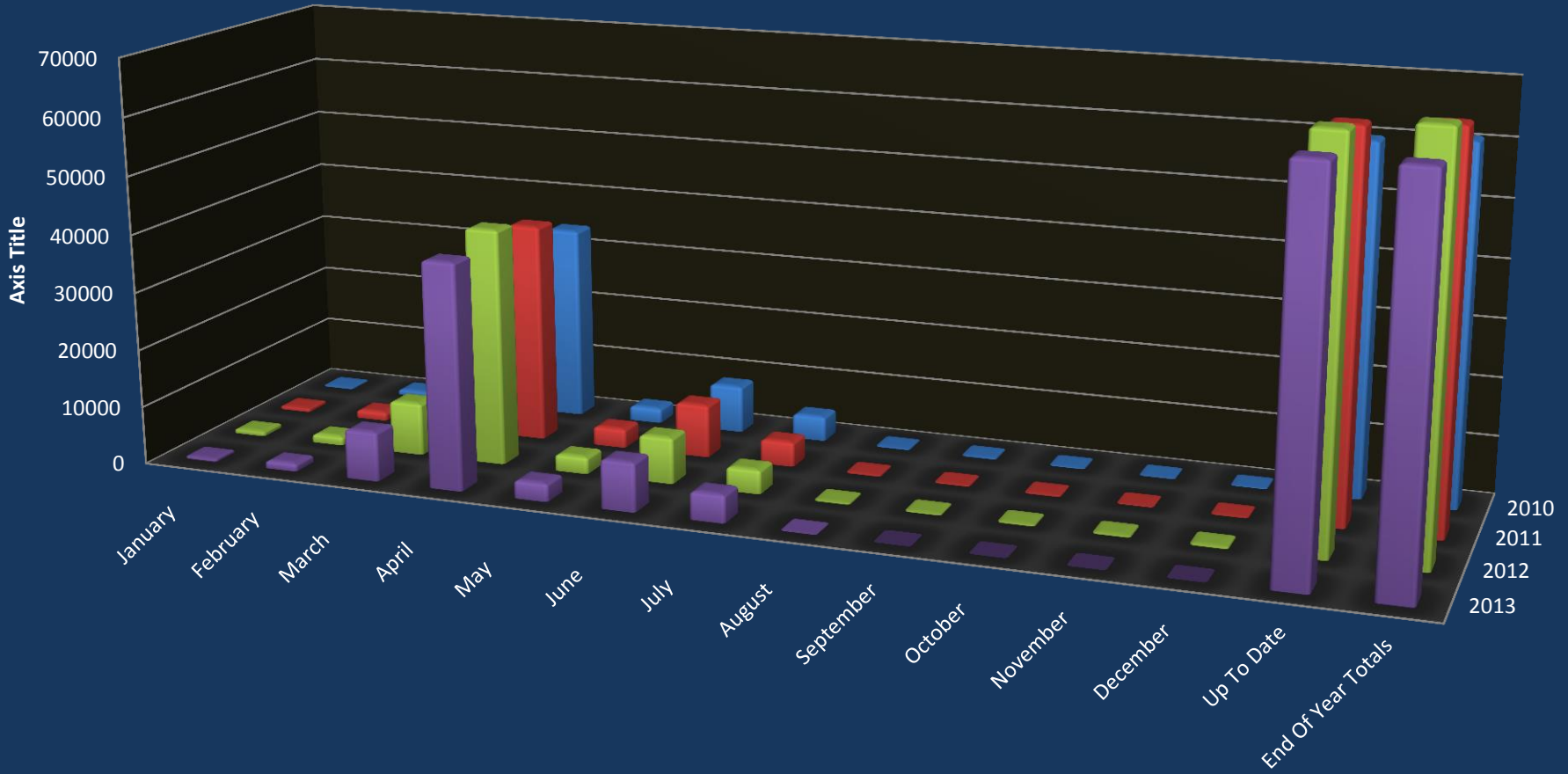
Data							
(Annual Reports/Annual Dues Comparison)							
YEAR	PROFIT	%	NON-PROFIT	%	LLC	%	TOTALS
2009	13,725	81%	2,431	14%	768	5%	16,924
2010	50,170	82%	9,240	15%	1,536	3%	60,946
2011	52,434	79%	10,480	16%	3,457	5%	66,371
2012	53,438	77%	10,836	16%	4,915	7%	69,189
2013	49,747	75%	9,964	15%	6,436	10%	66,147
DIFF:10-09	36,445	266%	6,809	280%	768	100%	44,022
DIFF:11-10	2,264	5%	1,240	13%	1,921	125%	5,425
DIFF:12-11	1,004	2%	356	3%	1,458	42%	2,818
DIFF:13-12	-3,691	-7%	-872	-8%	1,521	31%	-3,042

New Creations by Class		Distribution of Hours			
Class	%			Qty.	%
CLOSE_CORPORATION	8.58%	Total Creations Filed		41,621	
CORPORATION	68.08%	Business hours (8-5)		29,290	70.4%
LIMITED_LIABILITY_COMPANY	18.53%	Off Business hours except SAT and SUN		8,517	20.5%
LIMITED_LIABILITY_PARTNERSHIP	0.23%	SAT and SUN		3,814	9.2%
MUNICIPAL_DEVELOPMENT	0.01%	Certificates of Good Standing			
PROFESSIONAL_CORPORATION	4.54%	Year	Paper	Online	Combined
SPECIAL_EMPLOYEE_OWNED	0.03%	2010	13,593	134	13,727
TOTAL	100.00%	2011	13,304	4,851	18,155
		2012	5,116	18,554	23,670
		2013	3,037	27,242	30,279
		2014	1,050	23,351	24,401

Online New Creations				New Creations Comparison (Paper VS Online)			
Month-Year	For Profit	Non Profit	Sub Total	Month-Year	Online	Paper	Combined
May-11	483	204	687	May-11	687	697	1,384
Jun-11	748	300	1,048	Jun-11	1,048	375	1,423
Jul-11	607	291	898	Jul-11	898	303	1,201
Aug-11	640	240	880	Aug-11	880	289	1,169
Sep-11	721	324	1,045	Sep-11	1,045	371	1,416
Oct-11	728	328	1,056	Oct-11	1,056	272	1,328
Nov-11	638	275	913	Nov-11	913	189	1,102
Dec-11	597	208	805	Dec-11	805	196	1,001
Jan-12	796	342	1,138	Jan-12	1,138	138	1,276
Feb-12	795	372	1,167	Feb-12	1,167	155	1,322
Mar-12	884	339	1,223	Mar-12	1,223	189	1,412
Apr-12	744	317	1,061	Apr-12	1,061	177	1,238
May-12	883	311	1,194	May-12	1,194	186	1,380
Jun-12	803	313	1,116	Jun-12	1,116	134	1,250
Jul-12	662	275	937	Jul-12	937	115	1,052
Aug-12	806	307	1,113	Aug-12	1,113	115	1,228
Sep-12	770	288	1,058	Sep-12	1,058	103	1,161
Oct-12	854	302	1,156	Oct-12	1,156	105	1,261
Nov-12	556	211	767	Nov-12	767	71	838
Dec-12	600	233	833	Dec-12	833	77	910

Online New Creations				New Creations Comparison (Paper VS Online)			
Jan-13	1,027	296	1,323	Jan-13	1,323	116	1,439
Feb-13	910	387	1,297	Feb-13	1,297	104	1,401
Mar-13	835	342	1,177	Mar-13	1,177	115	1,292
Apr-13	879	373	1,252	Apr-13	1,252	153	1,405
May-13	893	323	1,216	May-13	1,216	144	1,360
Jun-13	784	292	1,076	Jun-13	1,076	116	1,192
Jul-13	748	251	999	Jul-13	999	105	1,104
Aug-13	925	319	1,244	Aug-13	1,244	123	1,367
Sep-13	763	277	1,040	Sep-13	1,040	98	1,138
Oct-13	777	284	1,061	Oct-13	1,061	111	1,172
Nov-13	596	221	817	Nov-13	817	100	917
Dec-13	600	188	788	Dec-13	788	108	896
Jan-14	849	301	1,150	Jan-14	1,150	117	1,267
Feb-14	773	275	1,048	Feb-14	1,048	124	1,172
Mar-14	906	333	1,239	Mar-14	1,239	107	1,346
Apr-14	769	319	1,088	Apr-14	1,088	87	1,175
May-14	920	293	1,213	May-14	1213	87	1,300
Jun-14	846	265	1,111	Jun-14	1111	106	1,217
Jul-14	740	247	987	Jul-14	987	71	1,058
Aug-14	302	108	410	Aug-14	410	29	439

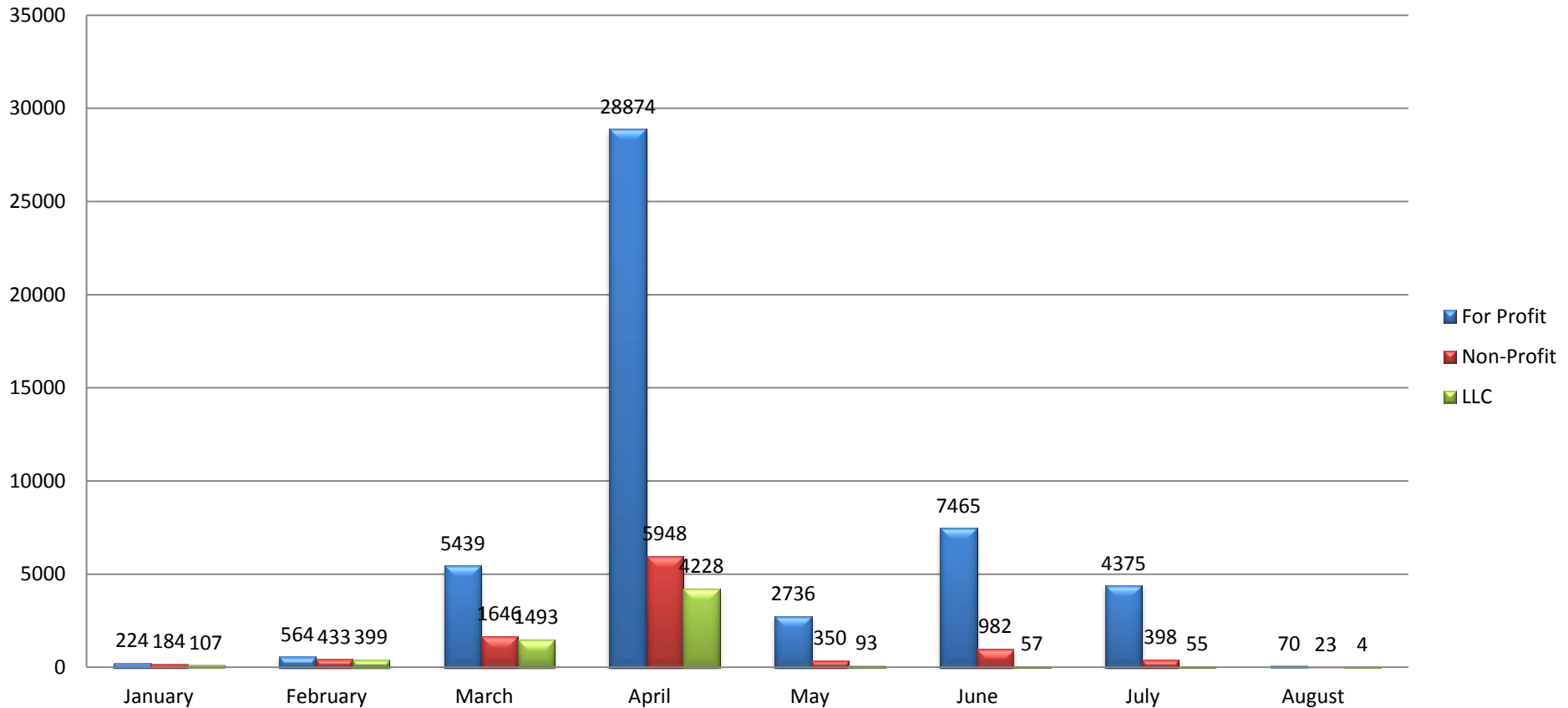
2013 Annual Report / Annual Dues



	January	February	March	April	May	June	July	August	September	October	November	December	Up To Date	End Of Year Totals
2013	515	1396	8578	39050	3179	8504	4828	97	0	0	0	0	66050	66147
2012	800	1530	9115	40977	2940	8009	4156	316	283	317	340	406	67527	69189
2011	618	1506	8252	38106	3333	9217	4315	260	198	239	132	195	65347	66371
2010	266	971	9566	33931	2636	8229	4319	247	260	205	171	145	59918	60946

Current Filing Season

2013 Season - Annual Report/Due



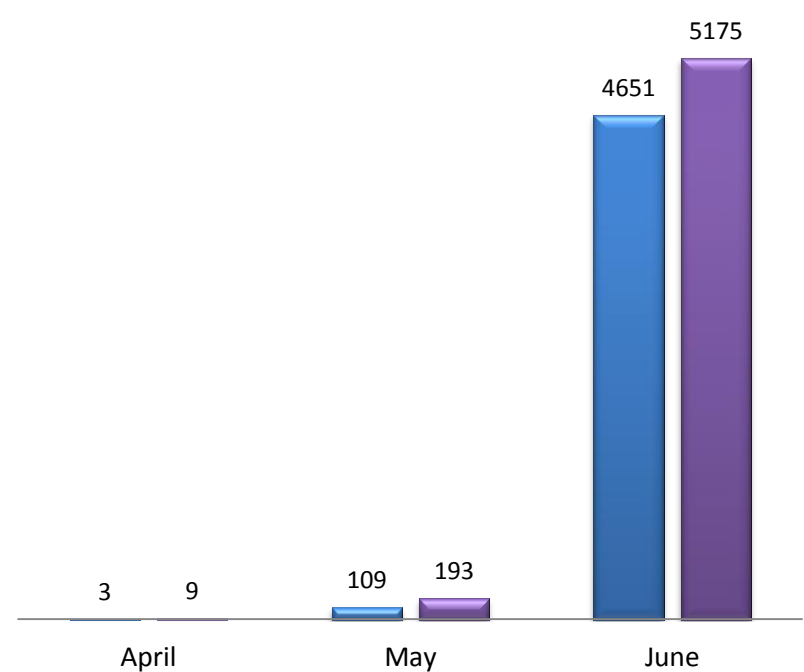
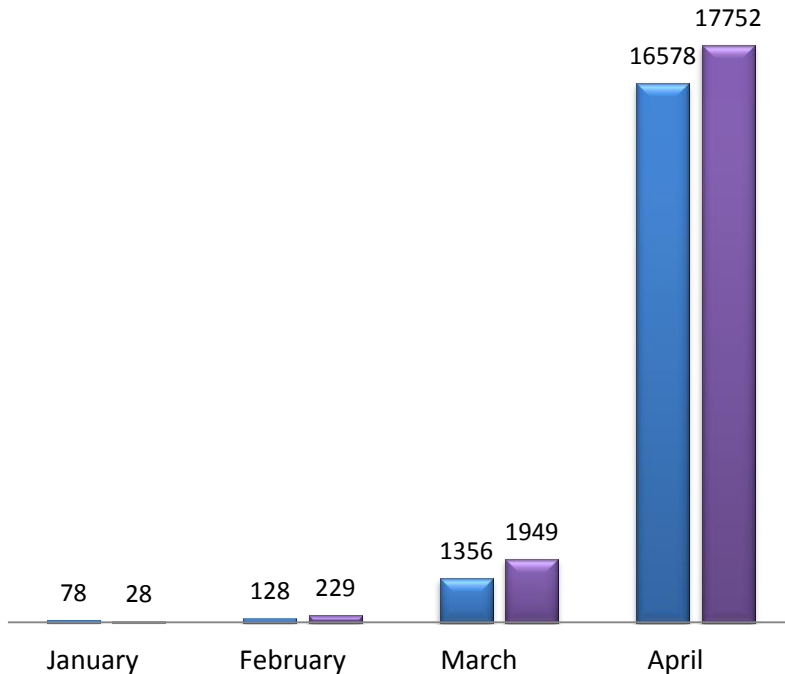
Extensions Two-Year Comparison

First Extension (Prórrogas) Two-Years Comparison

Second Extension (Prórrogas) Two-Years Comparison

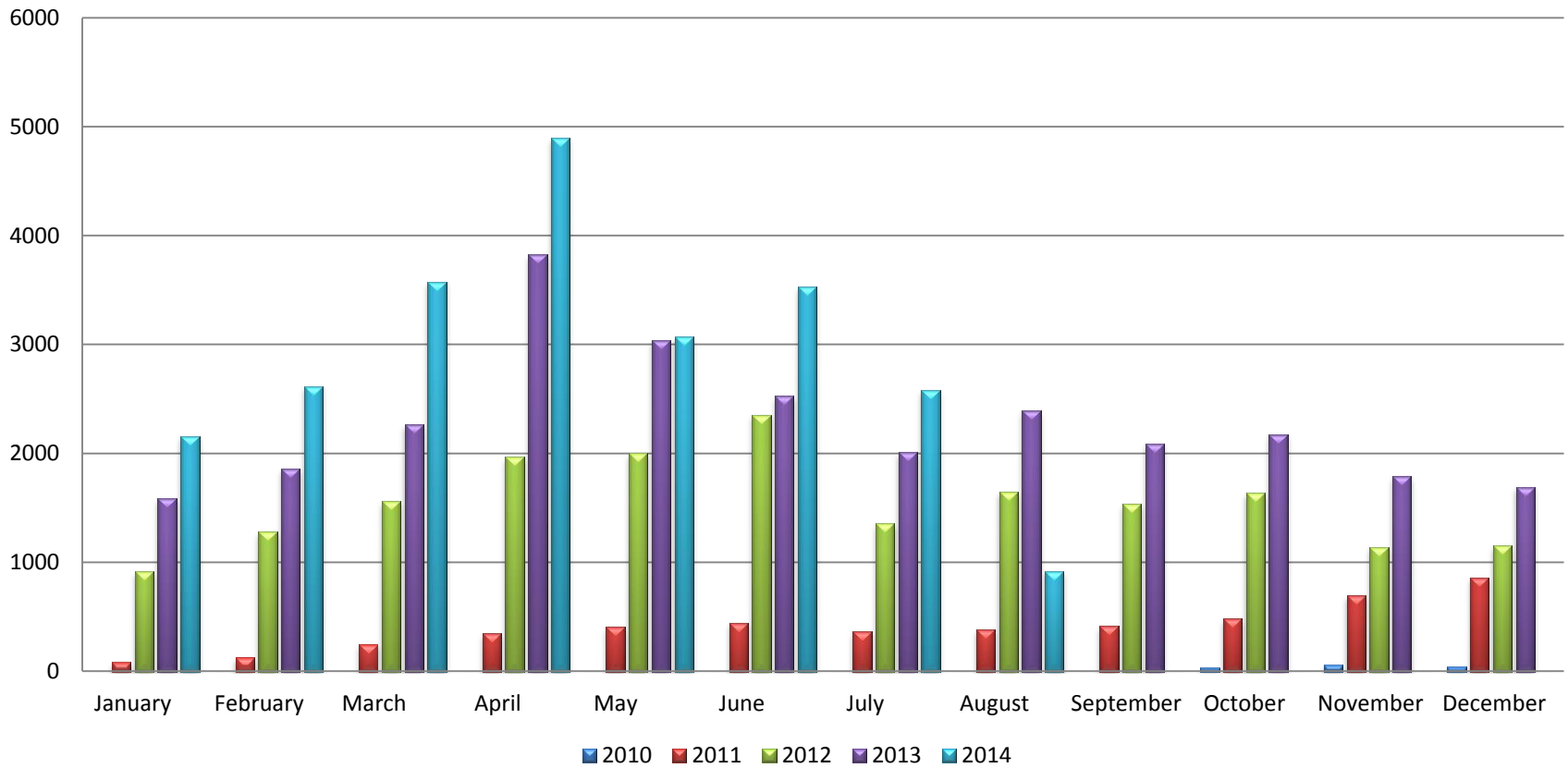
■ 2013 ■ 2014

■ 2013 ■ 2014



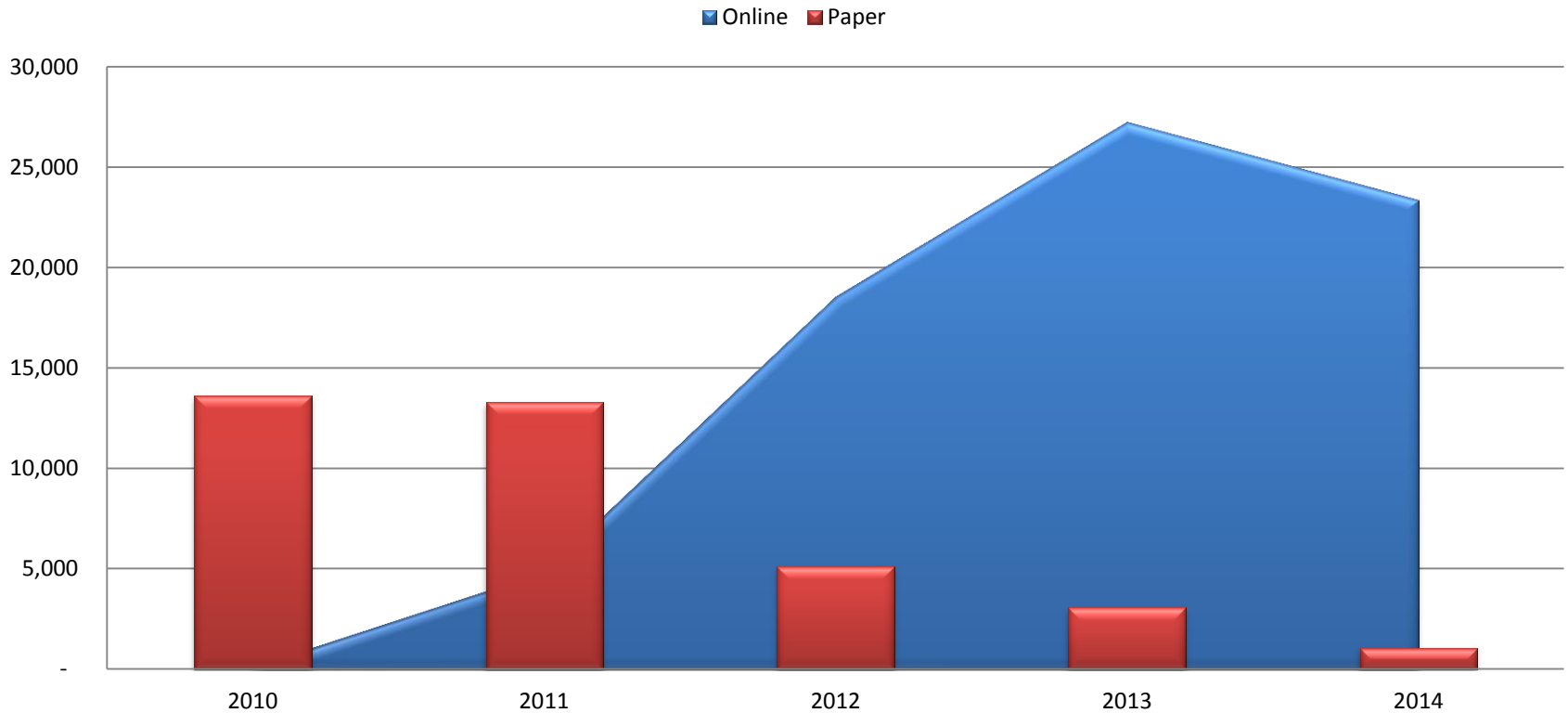
Online Certificates of Good Standings Multi-Years Comparison

Online Goodstanding



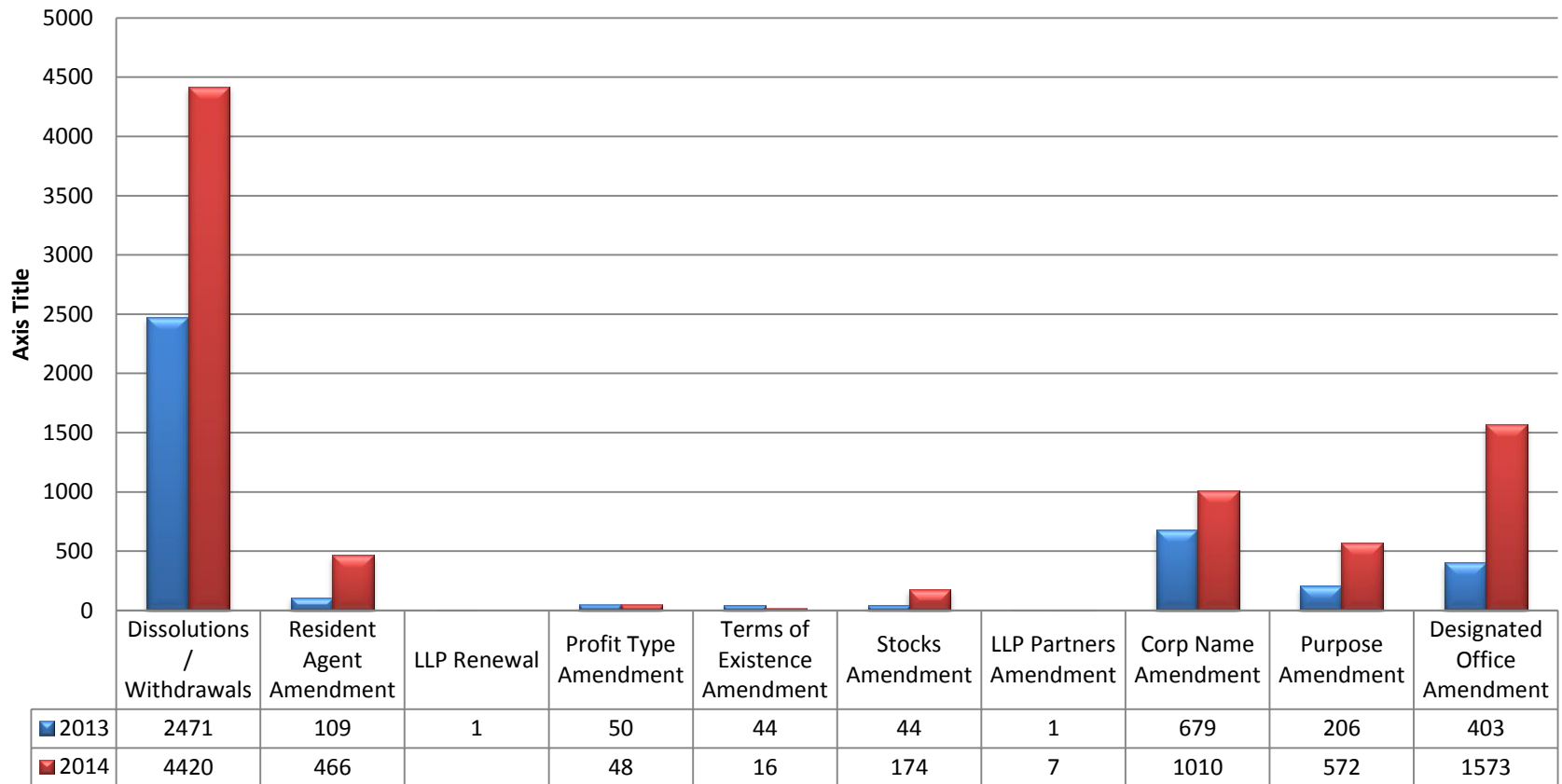
Certificates of Good Standings Comparison

Goodstanding Certificates Online vs Paper

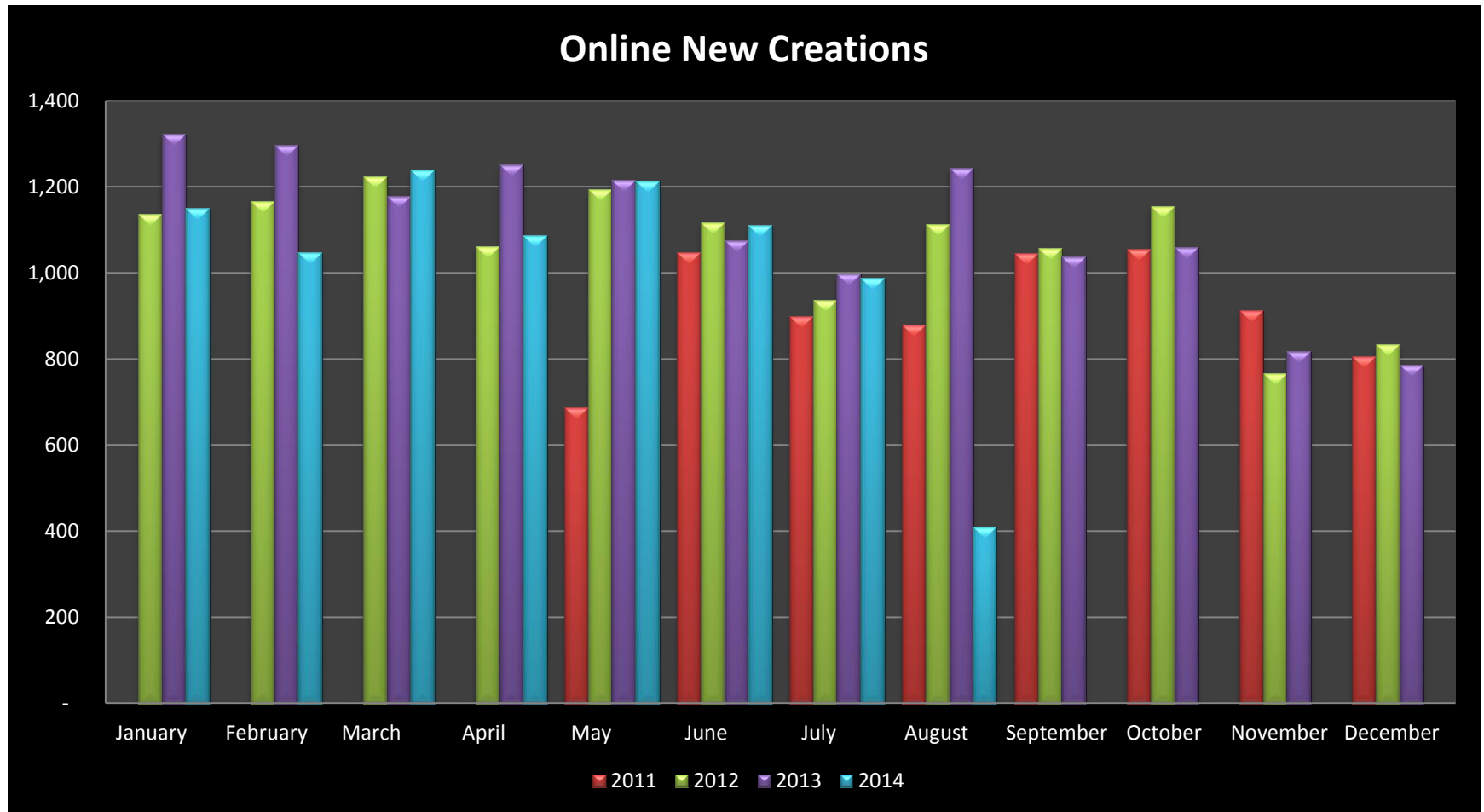


New Online Transactions

Additional Online Transactions



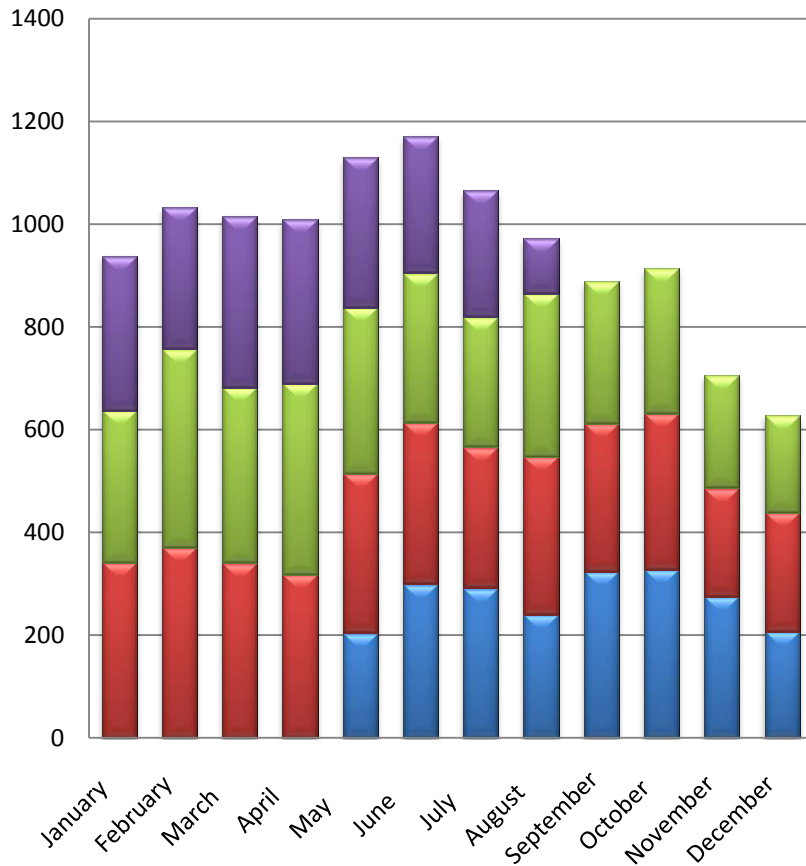
Multi-Years* Online New Creations Trend



*Online New Creations Started on May 2011

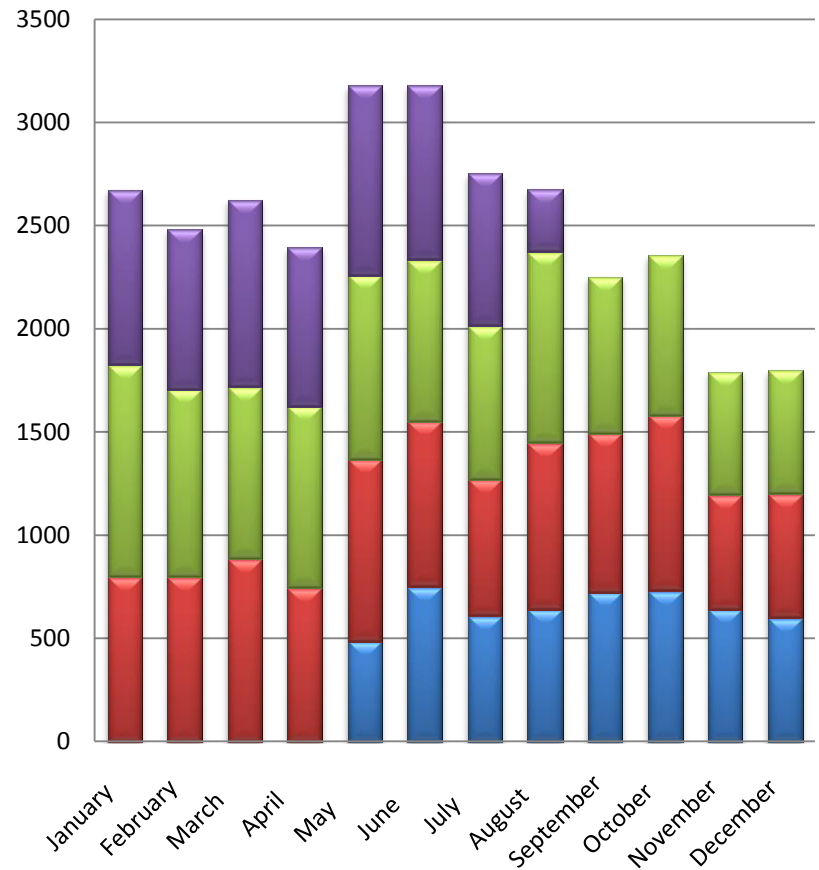
Online New Creations by Type

Non-Profits



8/13/2014 ■ 2011 ■ 2012 ■ 2013 ■ 2014

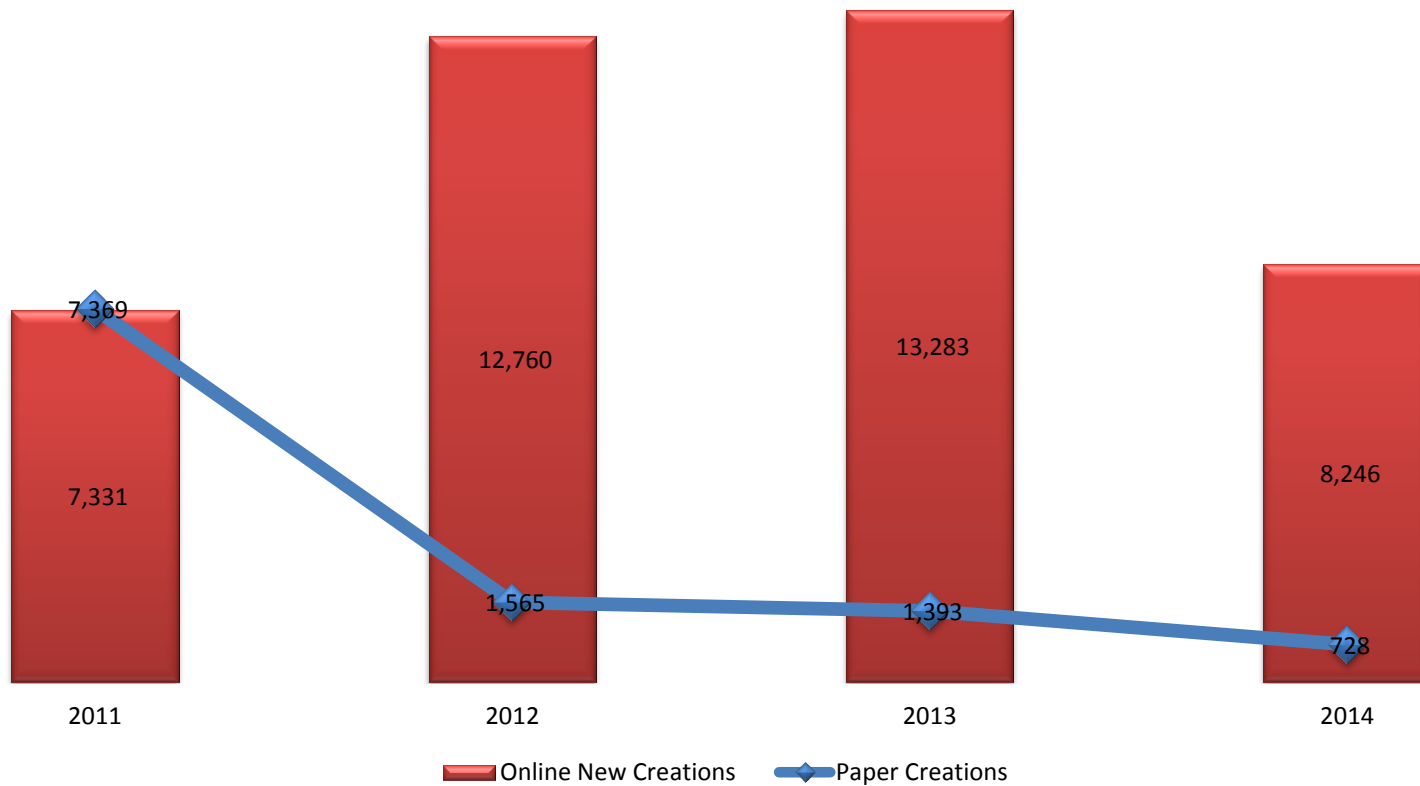
For Profits



■ 2011 ■ 2012 ■ 2013 ■ 2014

New Creations Comparison

Online vs Paper New Creations





Enrique Rivera

FileONE, LLC

Email: erivera@fileoneinc.com

Tel. (919) 854-4123 Ext. 185

Recibido: 13 de agosto de 2014