



Estado Libre Asociado de Puerto Rico

## Departamento de Estado

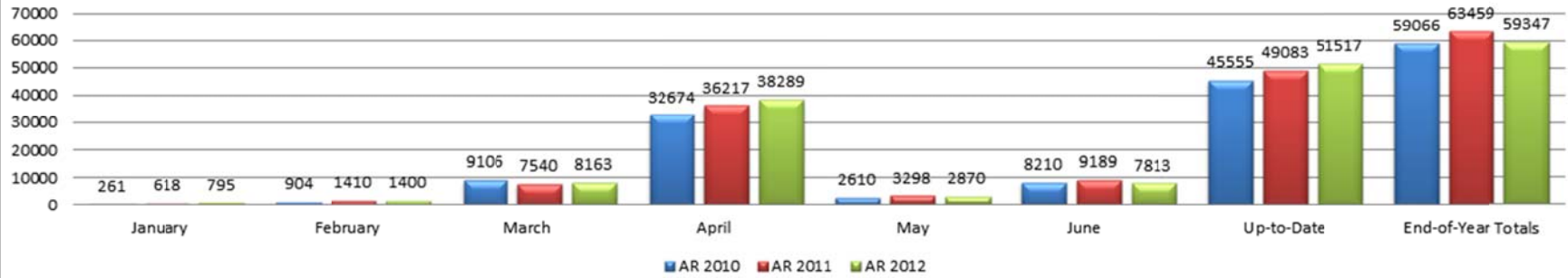
# Informe estadístico del Registro de Corporaciones

Total Numbers as of 6/27/2013							
COMPARACION INFORMES ANUALES / DERECHOS ANUALES							
(Annual Reports/Annual Dues Comparison)							
YEAR	PROFIT	%	NON-PROFIT	%	LLC	%	TOTALS
2009	13,725	81%	2,431	14%	768	5%	<b>16,924</b>
2010	48,846	83%	8,684	15%	1,536	3%	<b>59,066</b>
2011	50,289	79%	9,712	16%	3,458	6%	<b>63,459</b>
2012	45,683	77%	8,939	15%	4,725	8%	<b>59,347</b>
DIFF:10-09	35,121	256%	6,253	257%	768	100%	42,142
DIFF:11-10	1,443	3%	1,028	12%	1,922	125%	281
DIFF:12-11	-4,606	-9%	-773	-8%	1,267	37%	-21,317

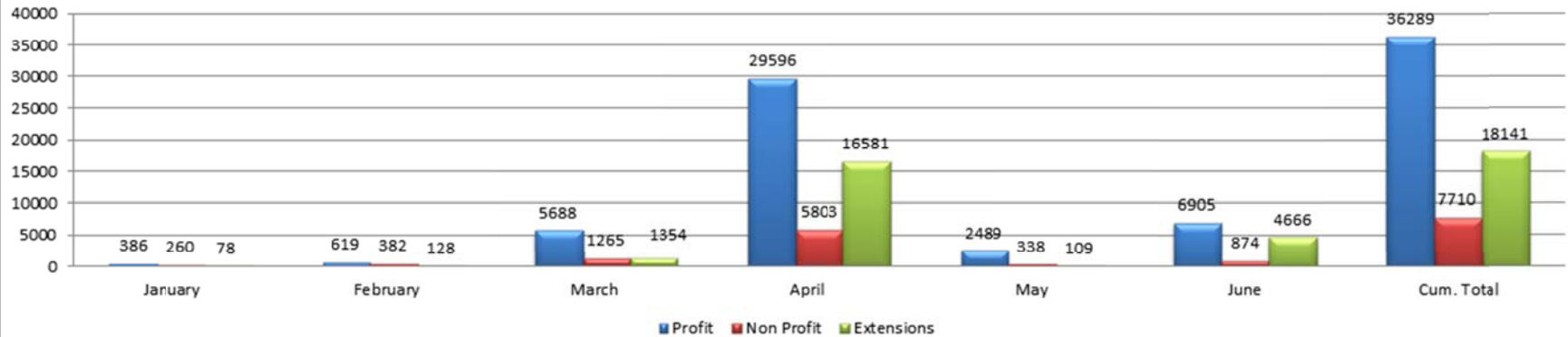
<b>RADICACIONES CON PENALIDADES</b>							
<b>(Filings With Penalties)</b>							
<b>YEAR</b>	<b>PROFIT</b>	<b>%</b>	<b>NON-PROFIT</b>	<b>%</b>	<b>LLC</b>	<b>%</b>	<b>TOTALS</b>
2009	<b>285</b>	39%	<b>164</b>	23%	<b>278</b>	38%	<b>727</b>
2010	<b>1,410</b>	65%	<b>642</b>	29%	<b>128</b>	6%	<b>2,180</b>
2011	<b>16,315</b>	91%	<b>1,634</b>	9%	<b>0</b>	0%	<b>17,949</b>
DIFF:10-09	<b>1,125</b>	395%	<b>478</b>	291%	<b>-150</b>	-54%	<b>1,453</b>
DIFF:11-10	14,905		992		<b>-54%</b>		<b>200%</b>

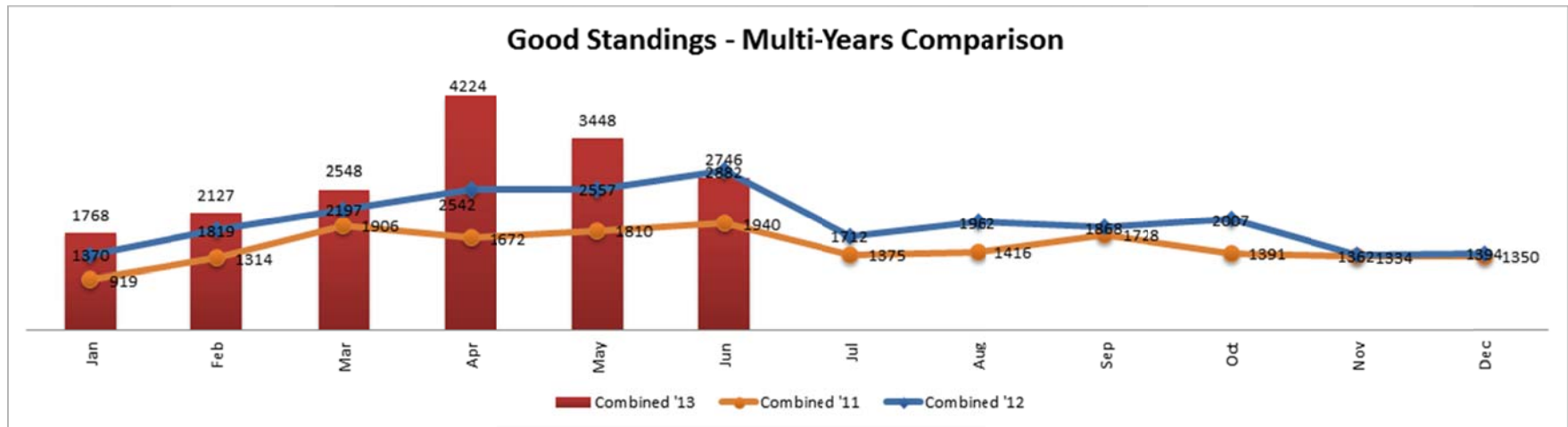
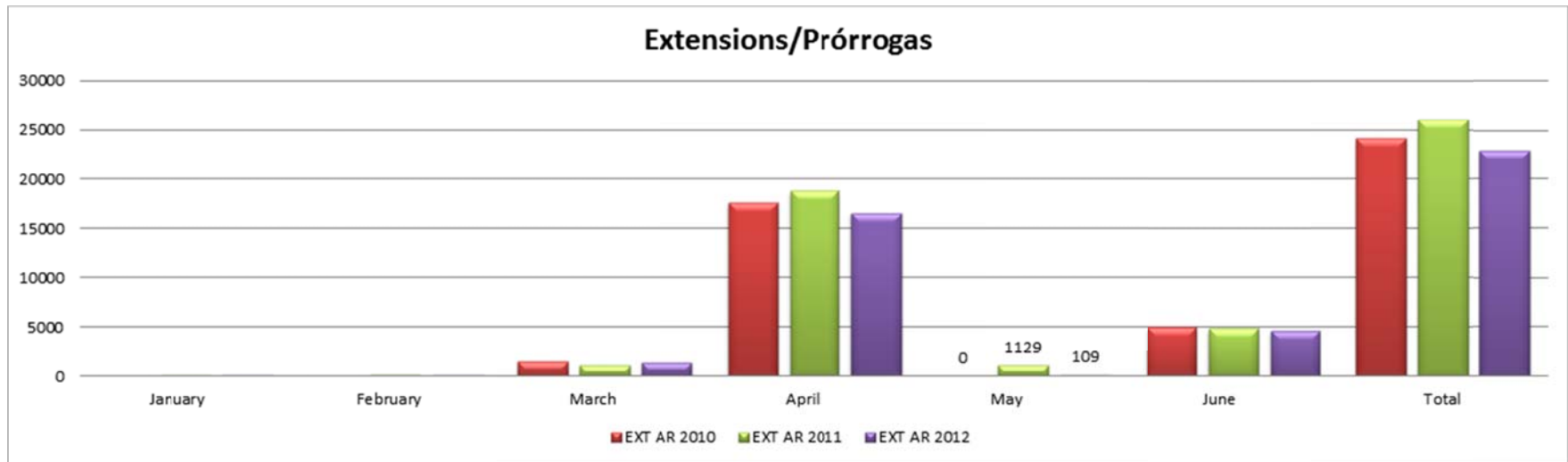
CERTIFICADOS DE CUMPLIMIENTO			REGISTRO DE CORPORACIONES			
(COGS Online)			(New Creations)			
2010	134		MONTH	PROFIT	NON-PROF	SUB-TOT
2011	4851		May-11	483	204	687
2012	18556		Jun-11	748	300	1,048
2013	15004		Jul-11	607	291	898
TOTALS	38545		Aug-11	640	240	880
			Sep-11	721	324	1,045
(New Creations by Class)			Oct-11	728	328	1,056
Class	%		Nov-11	638	275	913
Close Corporation	9.04%		Dec-11	598	208	806
Corporation	70.40%		Jan-12	796	342	1,138
Limited Liability Company	15.66%		Feb-12	795	372	1,167
Limited Liability Partnership	0.19%		Mar-12	881	342	1,223
Municipal Development	0.01%		Apr-12	744	317	1,061
Professional Corporation	4.67%		May-12	883	311	1,194
Special Employee Owned	0.04%		Jun-12	803	313	1,116
			Jul-12	662	275	937
			Aug-12	806	307	1,113
(Distribution of Hours)			Sep-12	771	288	1,059
Total Creations filed	27,397		Oct-12	854	302	1,156
Business hours (8-5)	19,264	70.3%	Nov-12	557	211	768
Off Business hours except SAT and	5,627	20.5%	Dec-12	603	233	836
SAT and SUN	2,506	9.1%	Jan-13	1,027	296	1,323
			Feb-13	910	387	1,297
			Mar-13	835	342	1,177
			Apr-13	881	372	1,253
			May-13	895	323	1,218
			Jun-13	757	276	1,033

### Annual Reports / Annual Dues

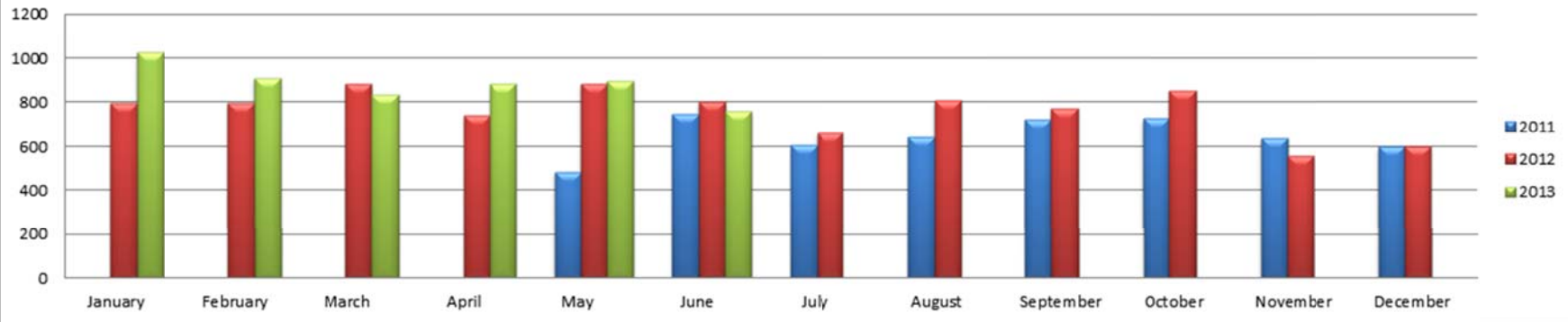


### 2012 Annual Report / Annual Dues

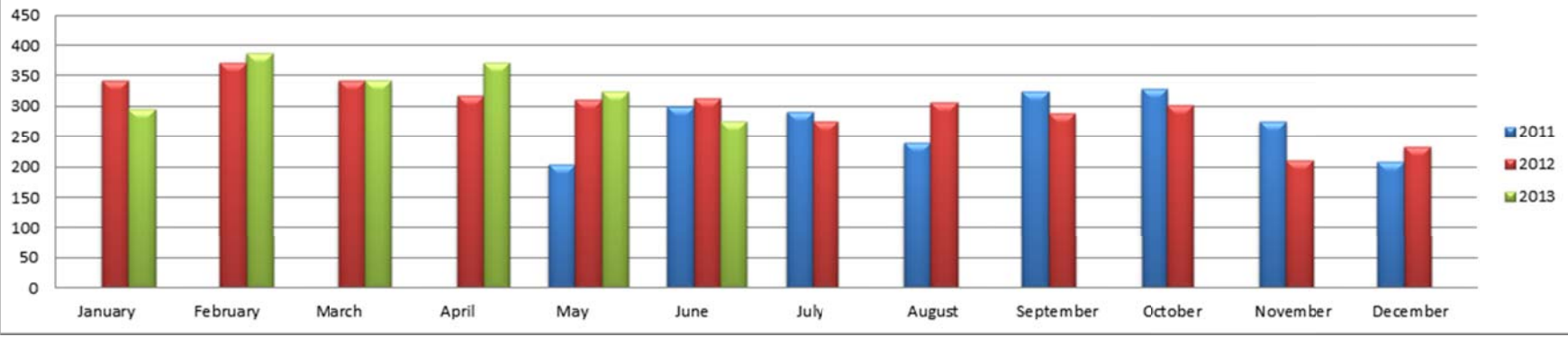


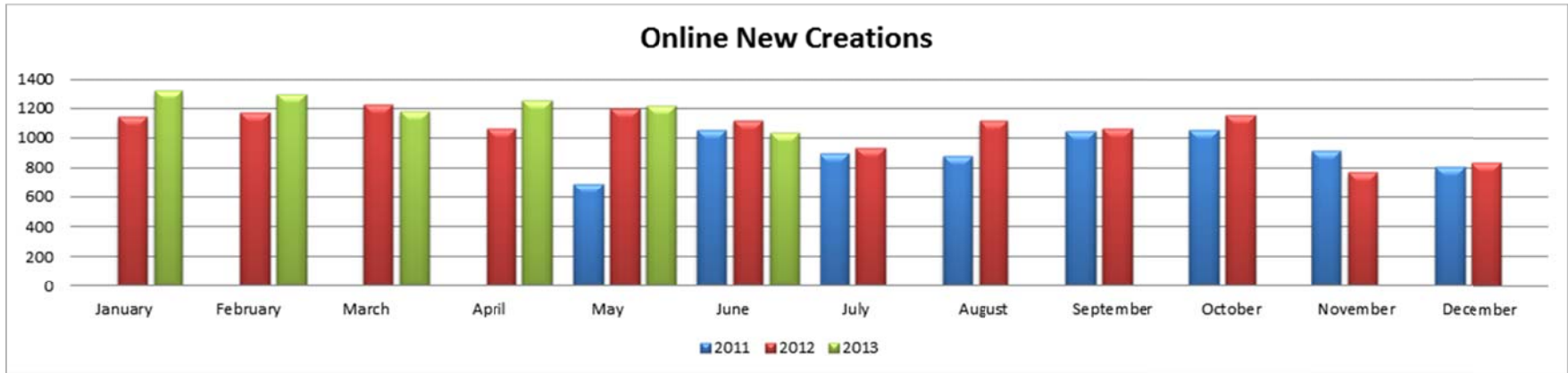


### For Profits New Creations

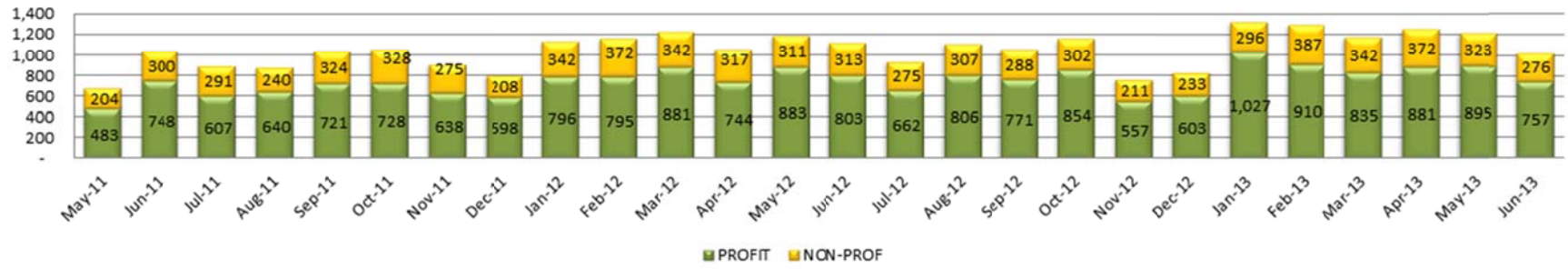


### Non-Profits New Creations

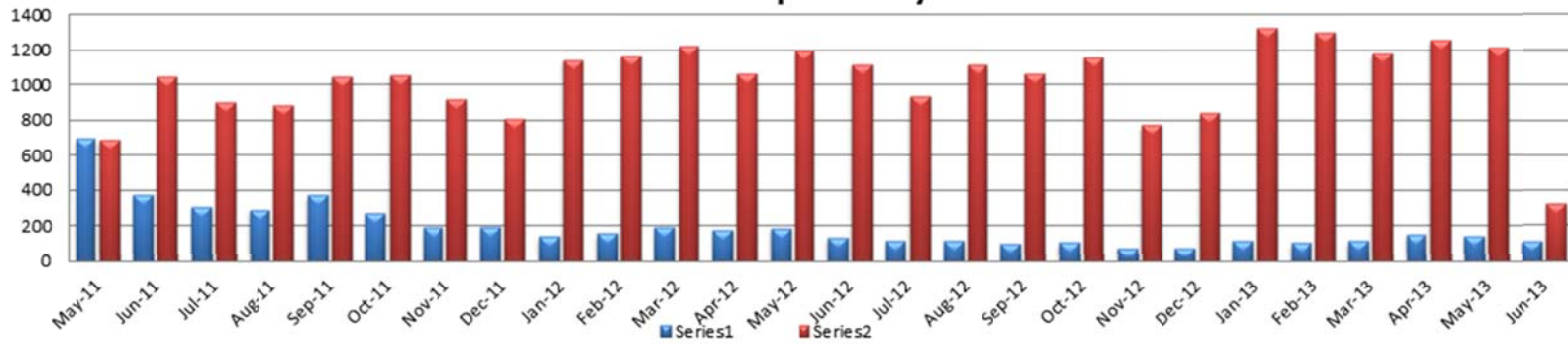




### New Creations Online By Type



### New Creations Comparison By Month







**Marvin R. Márquez**

Project Manager

File ONE LLC.

(787) 309-8382

(787) 722-2121 X6247

<http://www.fileoneinc.com>

[mmarquez@fileoneinc.com](mailto:mmarquez@fileoneinc.com)

Recibido: 28 de junio de 2013