

Puerto Rico Department of State Corporations Dashboard

As of March 30, 2015 11:59 pm





Estado Libre Asociado de Puerto Rico

Departamento de Estado

Informe estadístico del Registro de Corporaciones

DATA

Annual Report/Dues Comparison

Year	Profit	%	Non-Profit	%	LLC	%	Totals
2014	6102	59%	2093	20%	2061	20%	10256
2013	50256	75%	10224	15%	6246	9%	66726
2012	50531	78%	9728	15%	4915	8%	65174
2011	50298	79%	9707	15%	3457	5%	63462
2010	48846	83%	8678	15%	1533	3%	59057
2009	13753	81%	2445	14%	771	5%	16969
DIFF 14-13	-44154	-723.6%	-8131	-388.5%	-4185	-203.1%	-56470
DIFF 13-12	-275	-0.5%	496	4.9%	1331	21.3%	1552
DIFF 12-11	233	0.5%	21	0.2%	1458	29.7%	1712
DIFF 11-10	1452	2.9%	1029	10.6%	1924	55.7%	4405
DIFF 10-09	35093	71.8%	6233	71.8%	762	49.7%	42088

New Creations by Class			Certificates of Good Standing			
Class		%	Year	Online	Paper	Combined
Close Corporation		8.39%	2011	4,609	13,304	17,913
Corporation		66.85%	2012	18,554	5,116	23,670
Limited Liability Company		20.20%	2013	23,187	3,037	26,224
Limited Liability Partnership		0.25%	2014	26,880	2,131	29,011
Municipal Enterprise		0.01%	2015	7,186	363	7,549
Professional Corporation		4.22%	Certificates of Existence			
Special Corporation for Municipal Development		0.01%	Year	Online	Paper	Combined
Special Employee Owned Corporation		0.03%	2011	-	2,498	2,498
Sponsored By Municipal Corporation		0.03%	2012	-	1,886	1,886
			2013	4,055	936	4,991
			2014	7,374	172	7,546
			2015	2,005	33	2,038

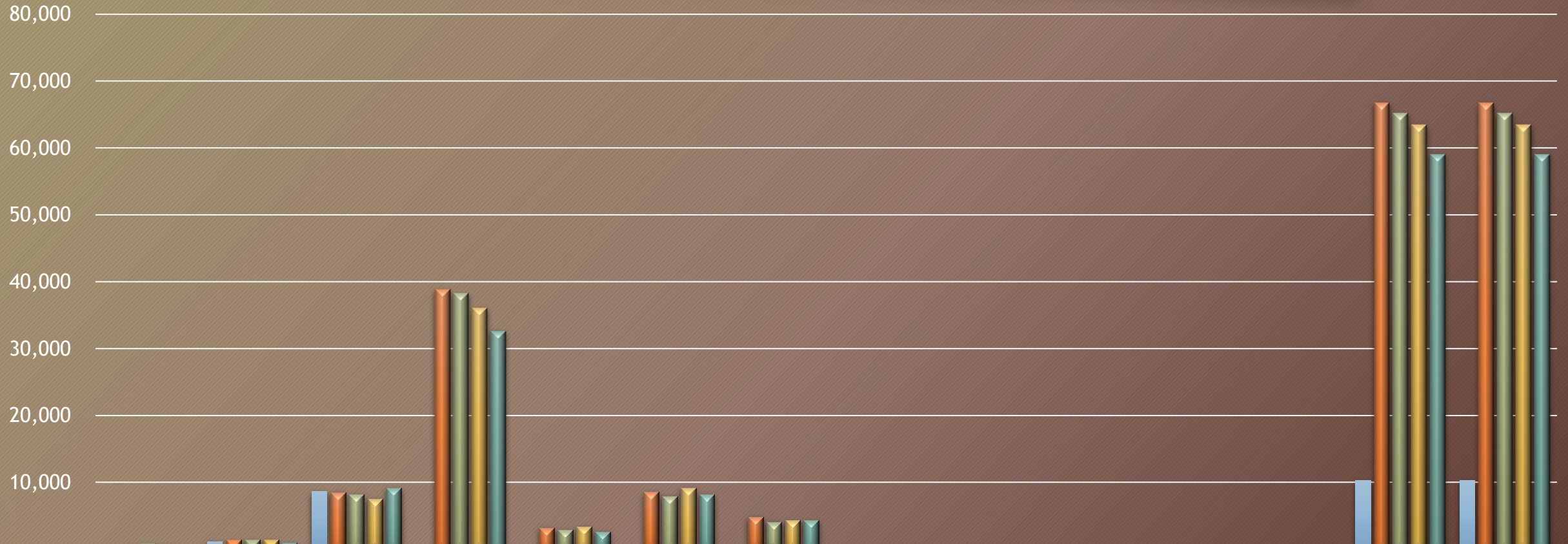
Online New Creations			New Creations Comparison (Paper VS Online)				
Month - Year	For Profit	Non-Proft	SubTotal	Month - Year	Paper	Online	Combined
May-11	484	204	688	May-11	1,473	688	2,161
Jun-11	747	299	1,046	Jun-11	764	1,046	1,810
Jul-11	607	291	898	Jul-11	652	898	1,550
Aug-11	640	241	881	Aug-11	488	881	1,369
Sep-11	722	325	1,047	Sep-11	523	1,047	1,570
Oct-11	728	328	1,056	Oct-11	454	1,056	1,510
Nov-11	638	275	913	Nov-11	329	913	1,242
Dec-11	598	207	805	Dec-11	267	805	1,072
Jan-12	796	341	1,137	Jan-12	202	1,137	1,339
Feb-12	795	371	1,166	Feb-12	216	1,166	1,382
Mar-12	883	340	1,223	Mar-12	255	1,223	1,478
Apr-12	742	318	1,060	Apr-12	247	1,060	1,307
May-12	882	311	1,193	May-12	256	1,193	1,449
Jun-12	802	314	1,116	Jun-12	189	1,116	1,305
Jul-12	662	275	937	Jul-12	141	937	1,078

Online New Creations			New Creations Comparison (Paper VS Online)				
Month - Year	For Profit	Non-Proft	SubTotal	Month - Year	Paper	Online	Combined
Aug-12	805	307	1,112	Aug-12	143	1,112	1,255
Sep-12	770	288	1,058	Sep-12	157	1,058	1,215
Oct-12	852	303	1,155	Oct-12	122	1,155	1,277
Nov-12	556	211	767	Nov-12	94	767	861
Dec-12	601	232	833	Dec-12	123	833	956
Jan-13	1,027	296	1,323	Jan-13	101	1,323	1,424
Feb-13	910	387	1,297	Feb-13	96	1,297	1,393
Mar-13	835	342	1,177	Mar-13	111	1,177	1,288
Apr-13	880	372	1,252	Apr-13	132	1,252	1,384
May-13	893	323	1,216	May-13	133	1,216	1,349
Jun-13	784	292	1,076	Jun-13	103	1,076	1,179
Jul-13	744	253	997	Jul-13	87	997	1,084
Aug-13	926	318	1,244	Aug-13	111	1,244	1,355
Sep-13	761	277	1,038	Sep-13	85	1,038	1,123
Oct-13	776	284	1,060	Oct-13	89	1,060	1,149

Online New Creations			New Creations Comparison (Paper VS Online)				
Month - Year	For Profit	Non-Profit	SubTotal	Month - Year	Paper	Online	Combined
Nov-13	598	219	817	Nov-13	77	817	894
Dec-13	598	188	786	Dec-13	84	786	870
Jan-14	849	301	1,150	Jan-14	107	1,150	1,257
Feb-14	774	274	1,048	Feb-14	109	1,048	1,157
Mar-14	906	333	1,239	Mar-14	92	1,239	1,331
Apr-14	769	319	1,088	Apr-14	72	1,088	1,160
May-14	918	293	1,211	May-14	67	1,211	1,278
Jun-14	846	265	1,111	Jun-14	89	1,111	1,200
Jul-14	737	248	985	Jul-14	49	985	1,034
Aug-14	814	264	1,078	Aug-14	81	1,078	1,159
Sep-14	849	306	1,155	Sep-14	125	1,155	1,280
Oct-14	872	226	1,098	Oct-14	134	1,098	1,232
Nov-14	679	199	878	Nov-14	112	878	990
Dec-14	603	166	769	Dec-14	114	769	883

Online New Creations			New Creations Comparison (Paper VS Online)				
Month - Year	For Profit	Non-Proft	SubTotal	Month - Year	Paper	Online	Combined
Jan-15	872	285	1,157	Jan-15	112	1,157	1,269
Feb-15	786	313	1,099	Feb-15	133	1,099	1,232
Mar-15	907	296	1,203	Mar-15	60	1,203	1,263

Annual Reports/Dues 5 Year Comparison

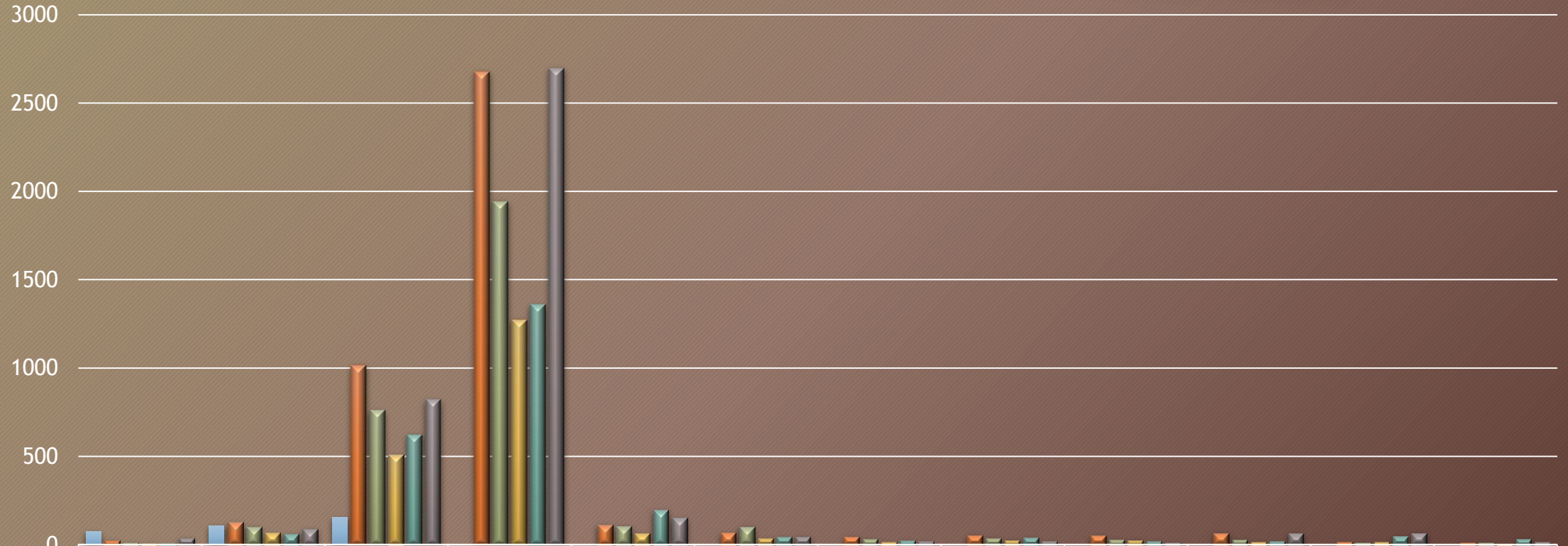


	January	February	March	April	May	June	July	August	September	October	November	December	UpToDate Totals	EndOfYear Totals
■ 2014	447	1,143	8,666	-	-	-	-	-	-	-	-	-	10,256	10,256
■ 2013	518	1,381	8,480	38,866	3,194	8,502	4,826	277	221	205	125	131	66,726	66,726
■ 2012	828	1,420	8,198	38,246	2,886	7,910	4,057	322	291	271	394	351	65,174	65,174
■ 2011	615	1,407	7,520	36,038	3,367	9,123	4,283	280	201	237	117	274	63,462	63,462
■ 2010	261	904	9,098	32,611	2,603	8,175	4,287	335	268	203	174	138	59,057	59,057

■ 2014 ■ 2013 ■ 2012 ■ 2011 ■ 2010

Annual Reports/Dues Prior Year Filings by Month

4

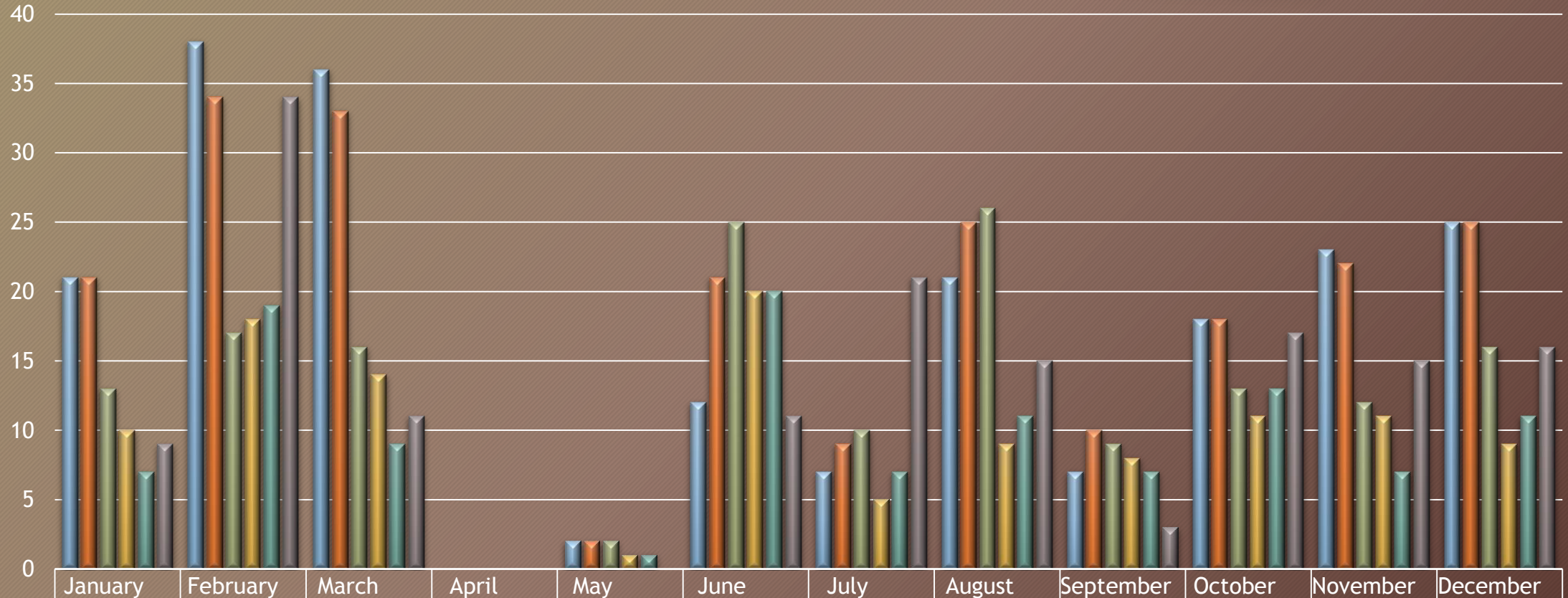


	January	February	March	April	May	June	July	August	September	October	November	December
■ 2013	75	107	154	0	0	0	0	0	0	0	0	0
■ 2012	24	127	1015	2677	113	66	45	52	51	64	15	11
■ 2011	13	101	760	1943	105	100	31	36	29	28	11	12
■ 2010	8	66	508	1273	64	35	14	25	25	16	14	4
■ 2009	7	61	623	1359	195	43	22	39	18	17	46	30
■ 2008 AND OLDER	37	89	821	2699	150	44	17	18	13	62	64	14

■ 2013 ■ 2012 ■ 2011 ■ 2010 ■ 2009 ■ 2008 AND OLDER

Filings Through Restoration

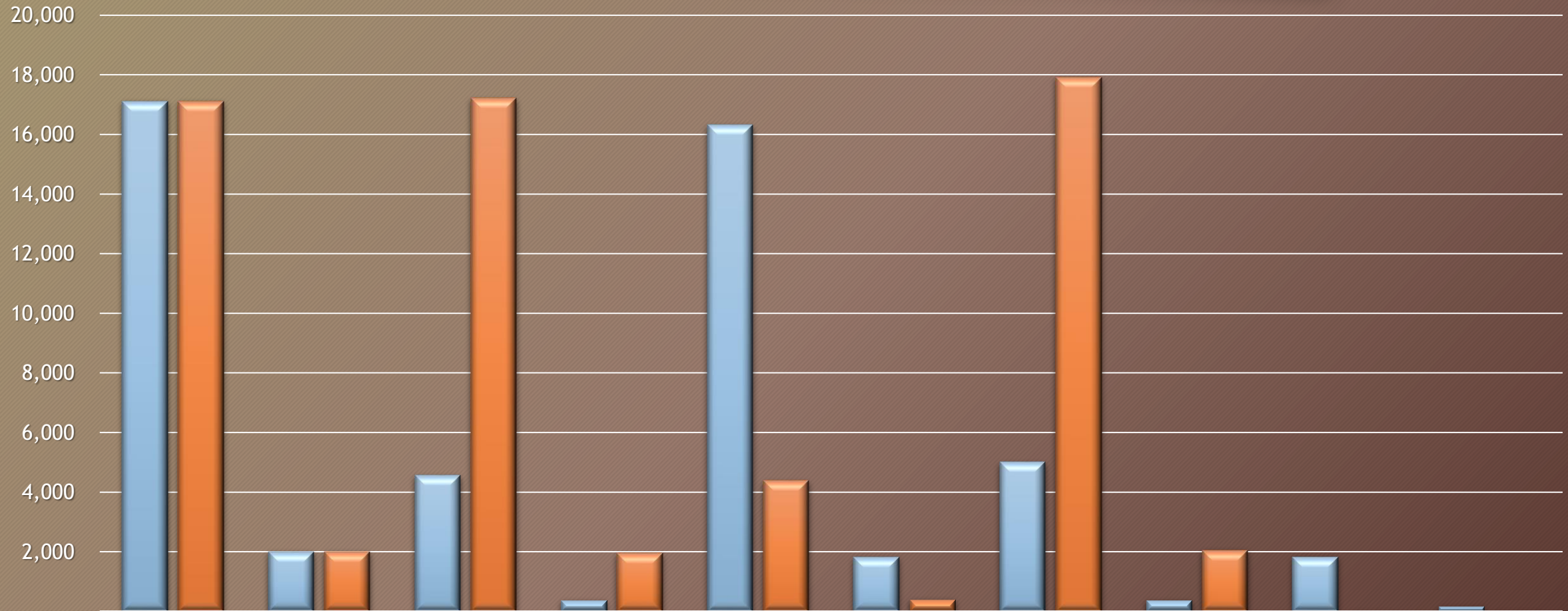
5



	January	February	March	April	May	June	July	August	September	October	November	December
2013	21	38	36	0	2	12	7	21	7	18	23	25
2012	21	34	33	0	2	21	9	25	10	18	22	25
2011	13	17	16	0	2	25	10	26	9	13	12	16
2010	10	18	14	0	1	20	5	9	8	11	11	9
2009	7	19	9	0	1	20	7	11	7	13	7	11
2008 AND OLDER	9	34	11	0	0	11	21	15	3	17	15	16

2013 2012 2011 2010 2009 2008 AND OLDER

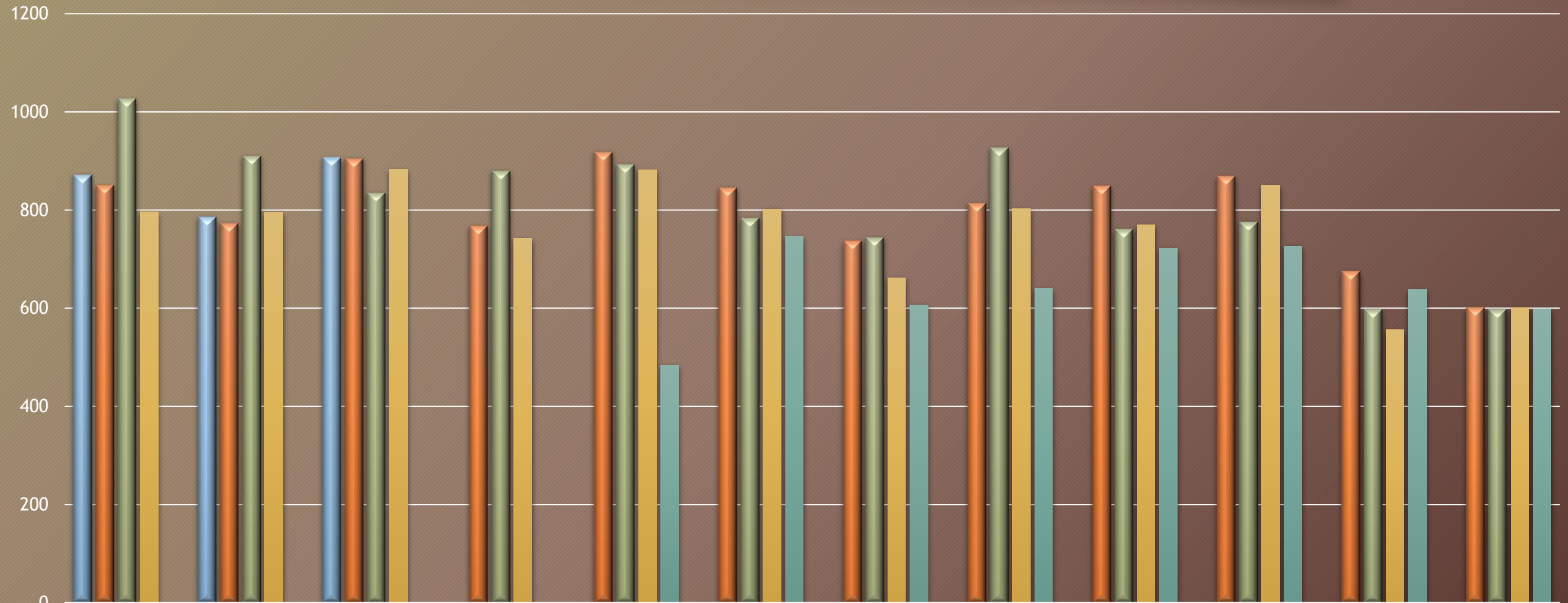
Online Extensions by Year



	2010		2011		2012		2013		2014	
	For Profit	Non profit	For Profit	Non profit	For Profit	Non profit	For Profit	Non profit	For Profit	Non profit
1st Extension	17,108	2,001	4,558	369	16,322	1,809	5,009	369	1,829	158
2nd Extension	17,108	2,001	17,216	1,939	4,379	383	17,912	2,043	-	-

1st Extension 2nd Extension

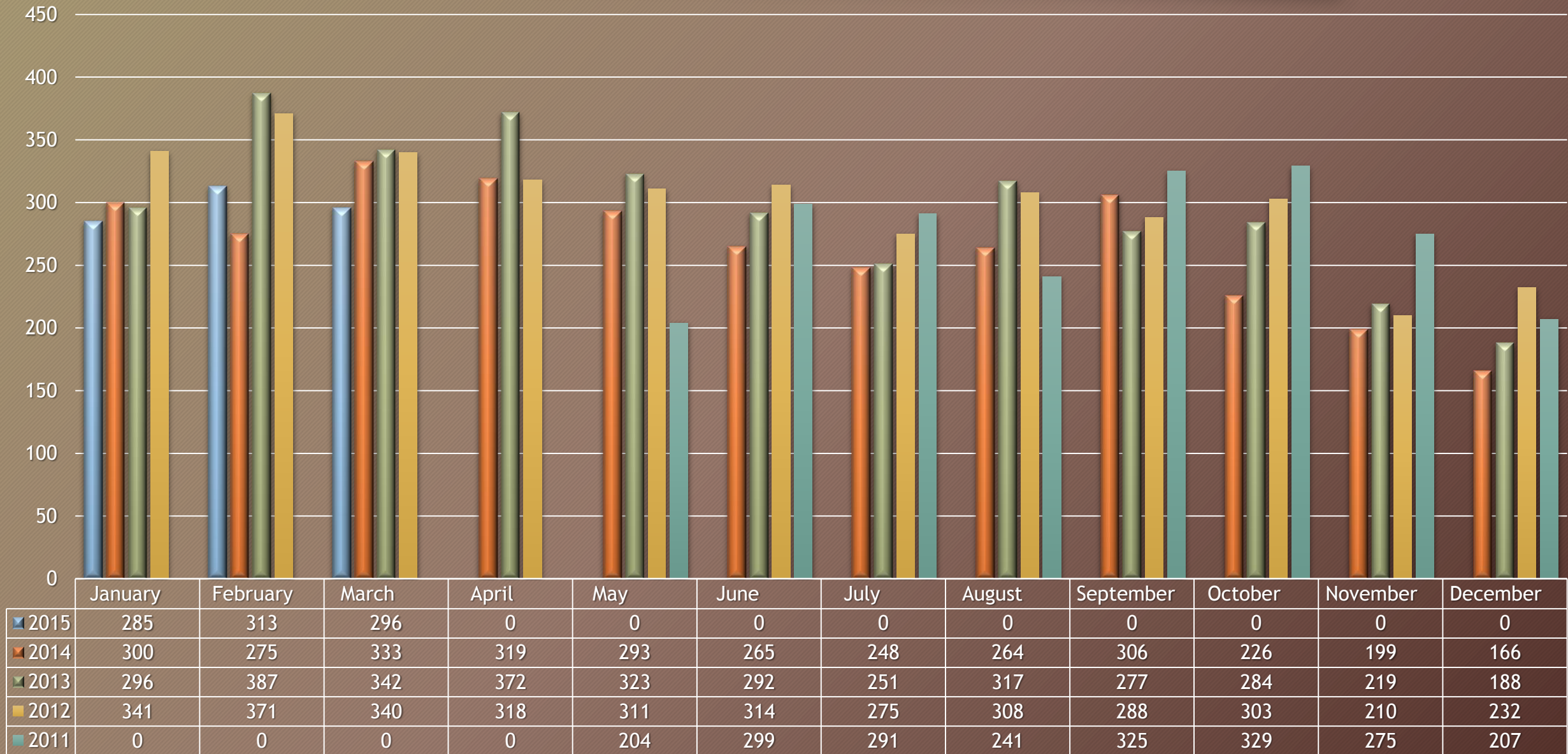
Online New Creations - For Profit



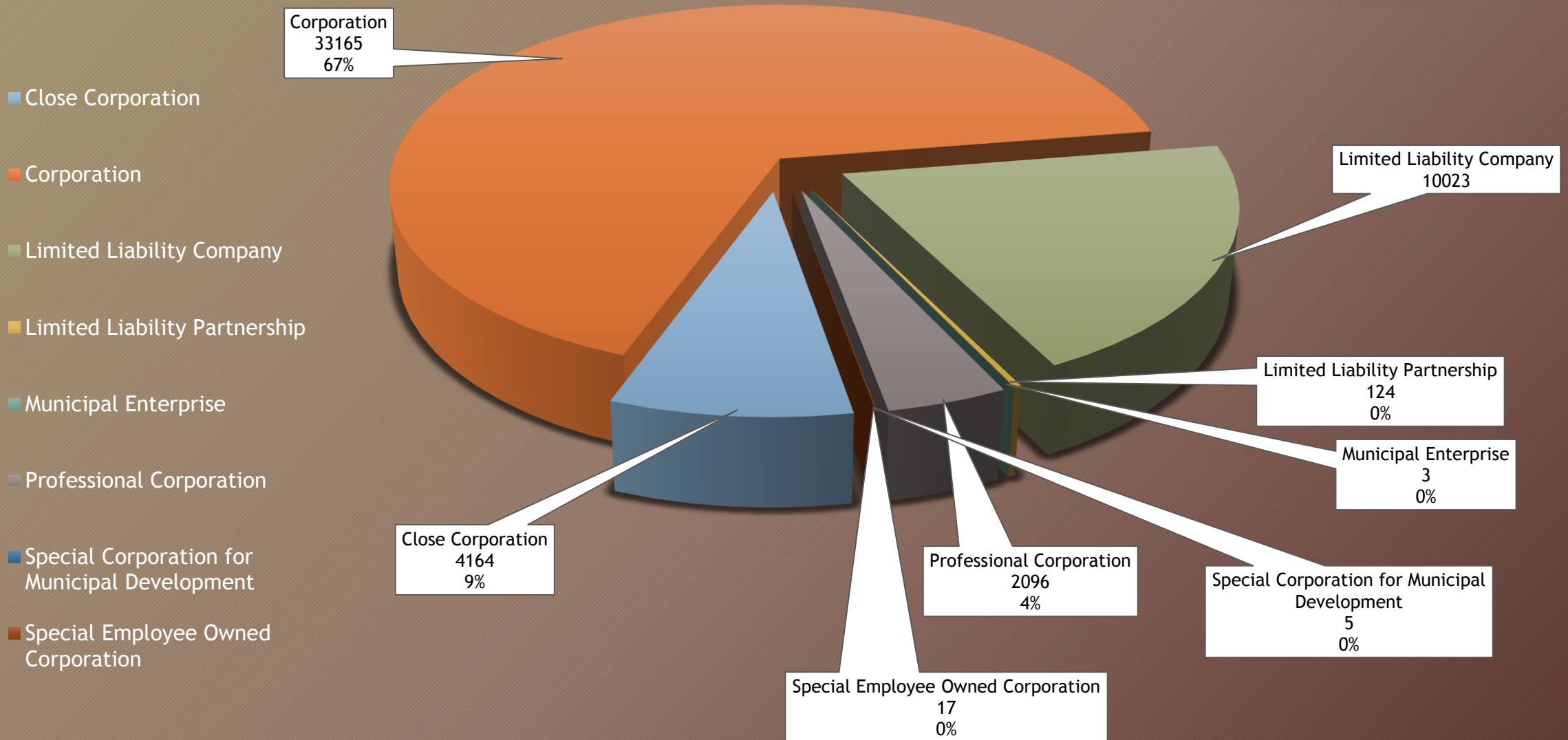
	January	February	March	April	May	June	July	August	September	October	November	December
2015	872	786	907	0	0	0	0	0	0	0	0	0
2014	850	773	905	768	918	846	737	814	849	869	676	601
2013	1027	910	835	880	893	784	744	927	761	776	598	598
2012	796	795	883	742	882	802	662	803	770	850	556	601
2011	0	0	0	0	484	746	607	640	722	727	638	598

Online New Creations - Non Profit

8

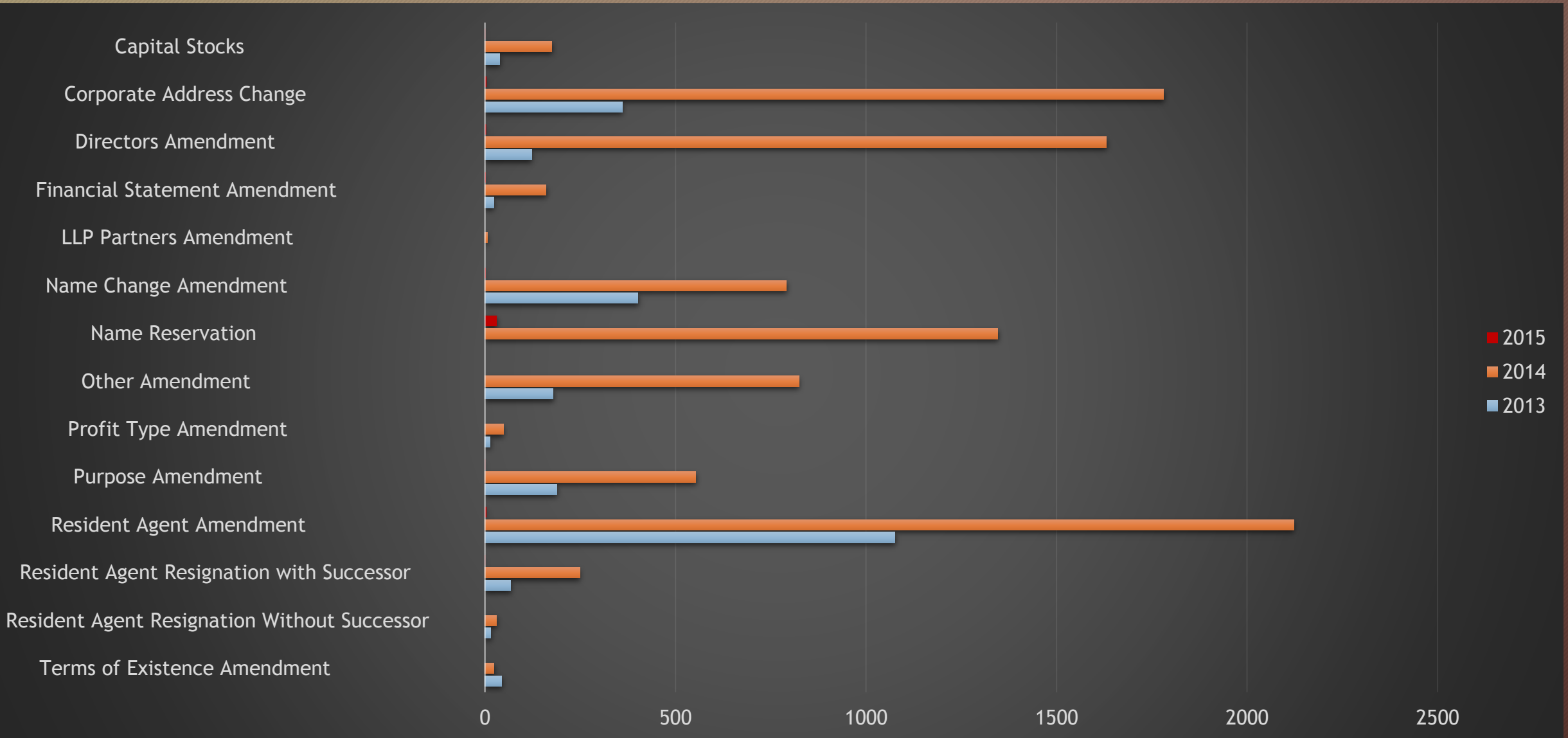


Online Creations by Corp Type



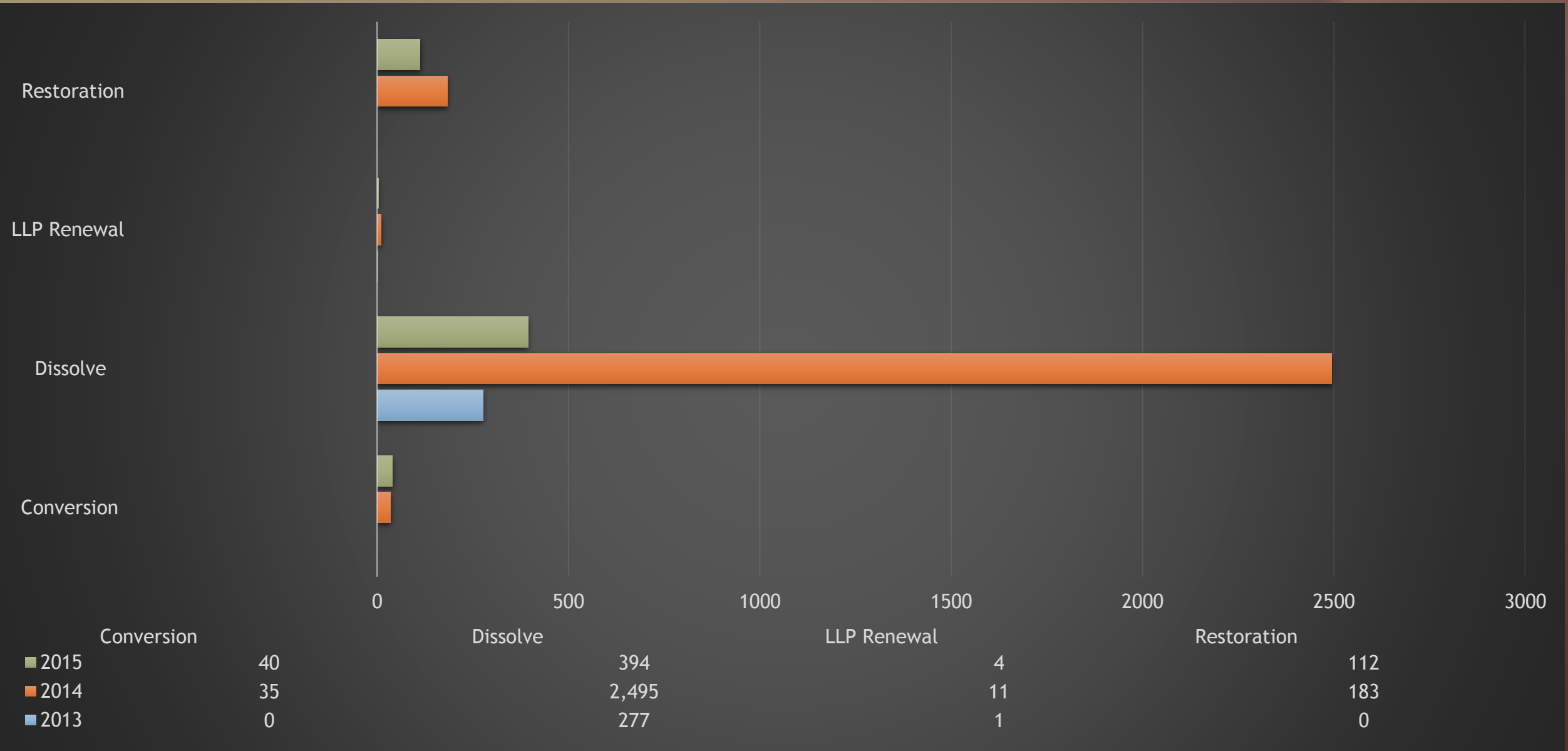
Online Amendments - Two Years Comparison

10



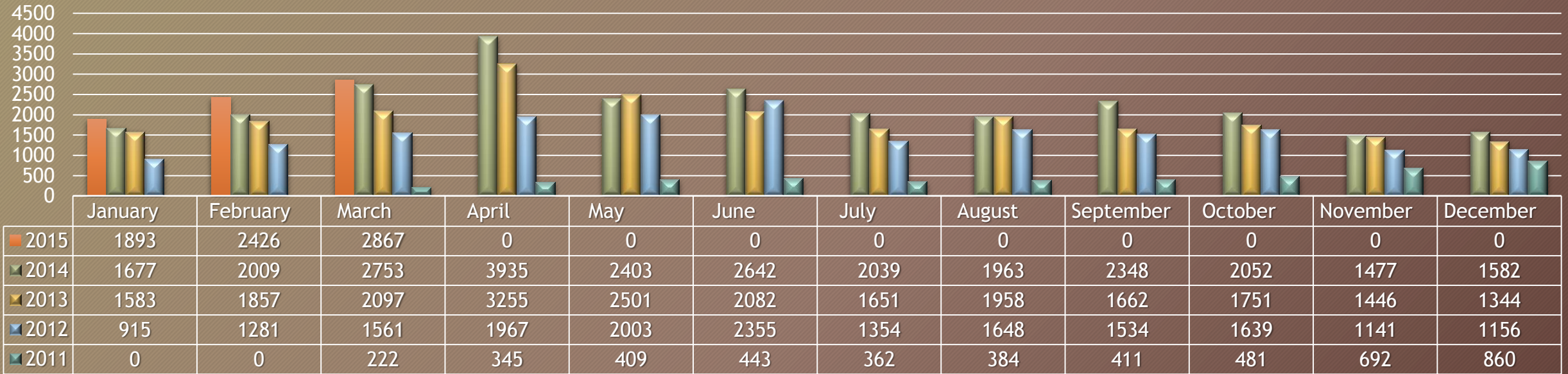
Other Online Transactions

11

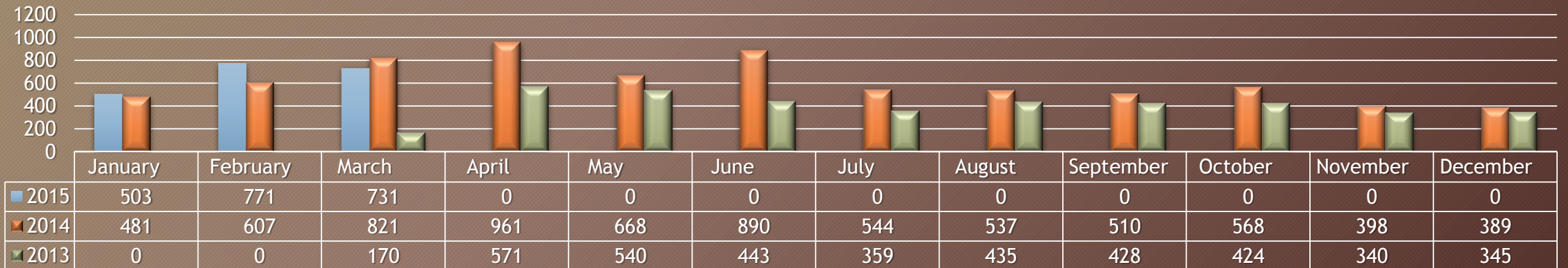


Online Certificates Month by Month

Certificates of Good Standing



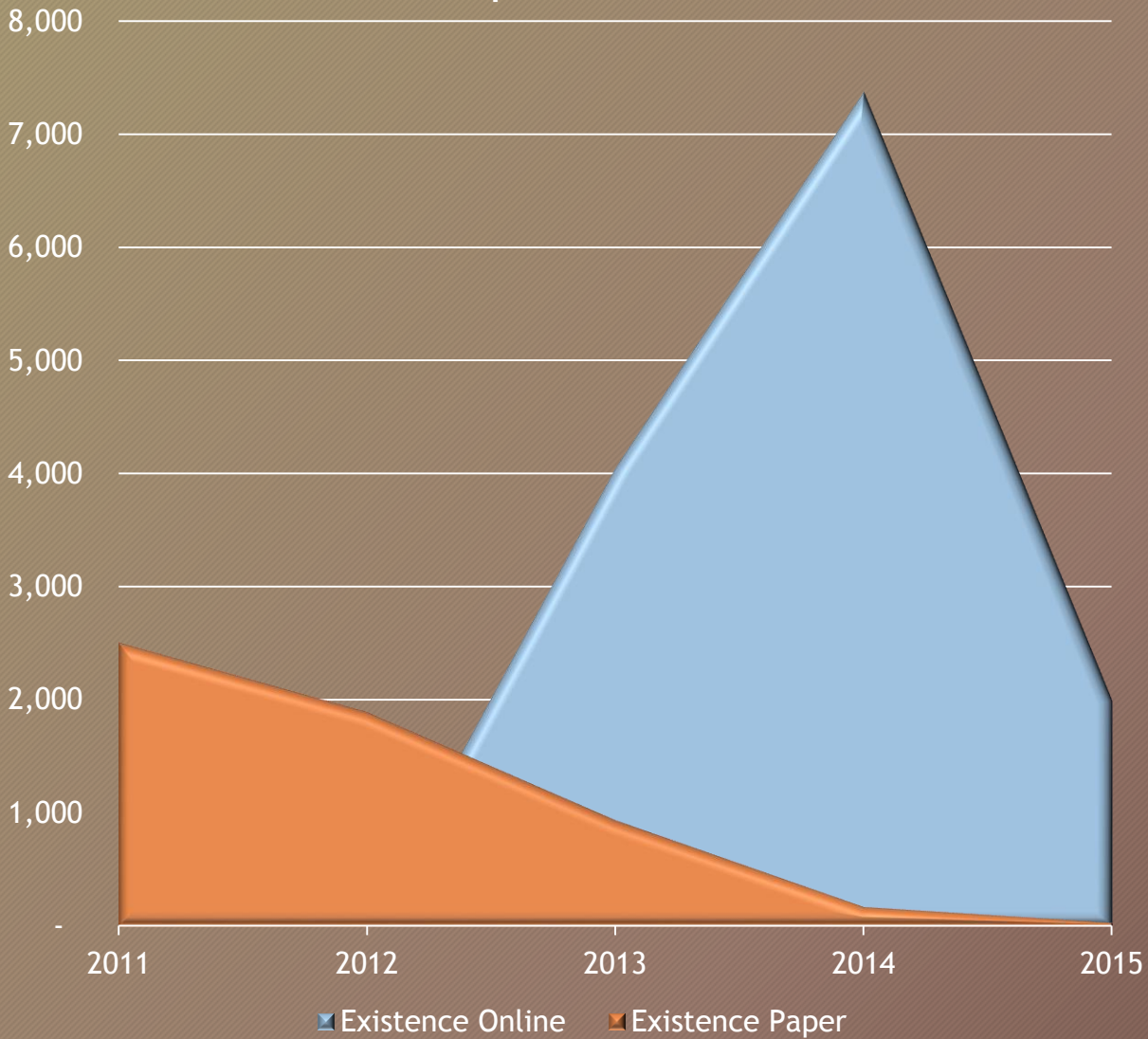
Certificates of Existence



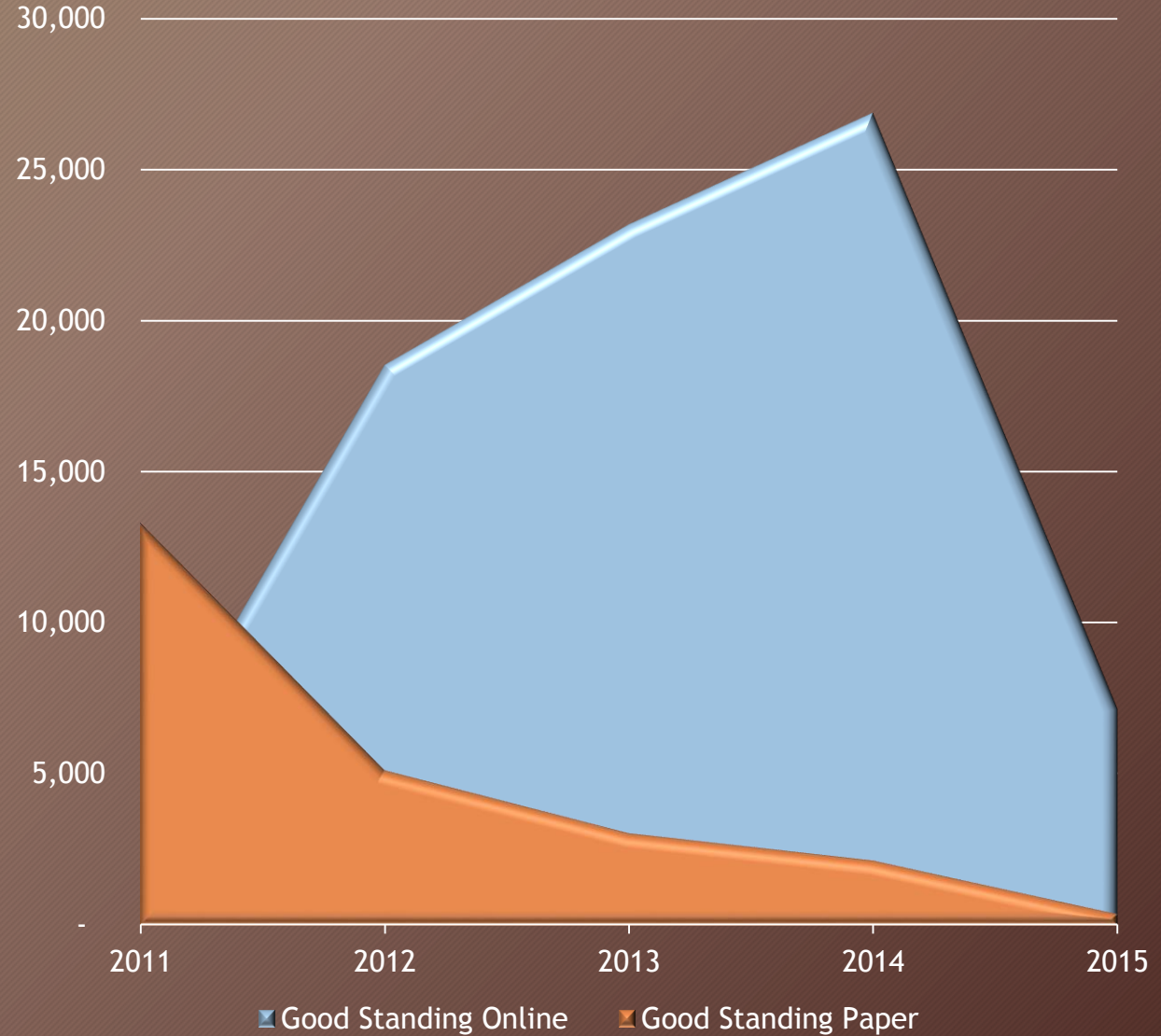
Online Certificates Comparison

13

Online Vs. Paper - Existence

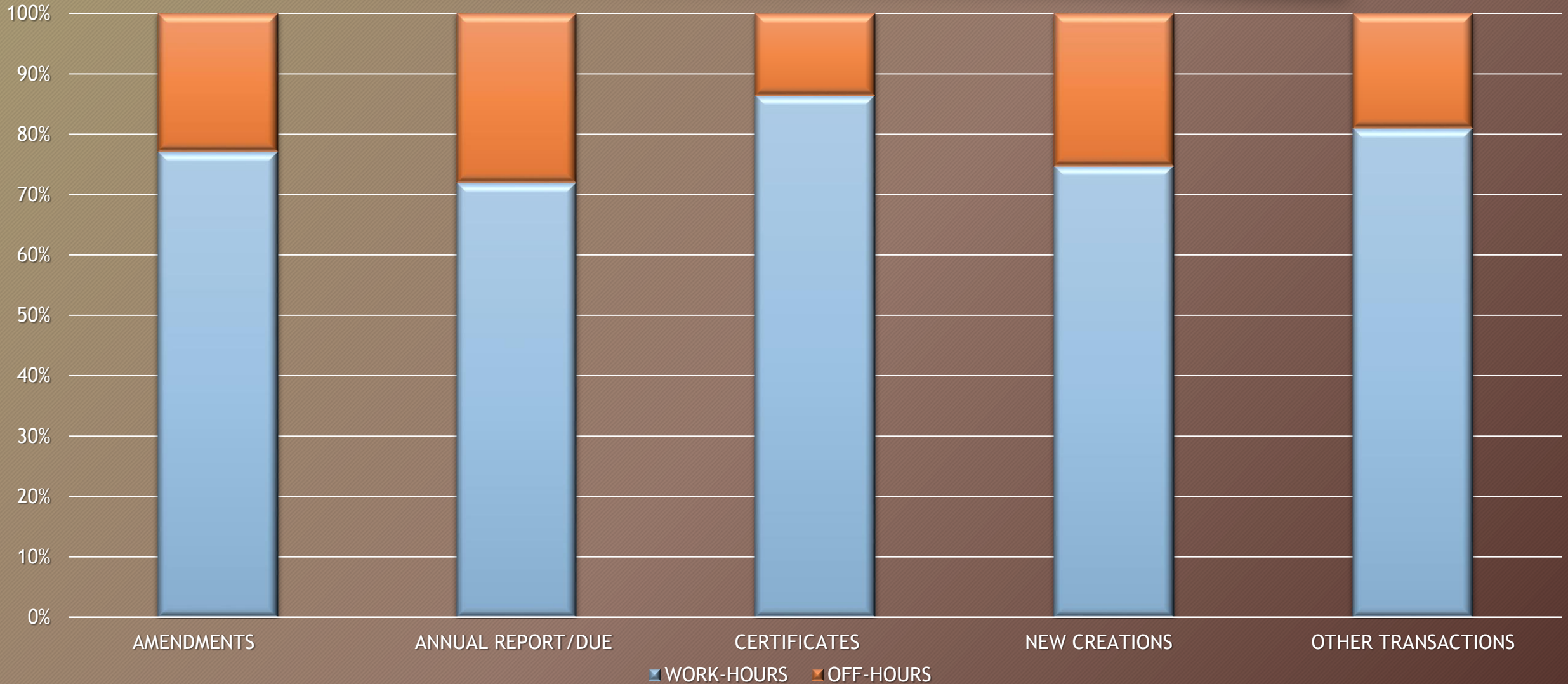


Online Vs. Paper - Good Standing



Work Hours Vs. Off-Hours Comparison

14



Work-Hours = Monday-Friday / 8:00am-6:00pm



Carlos D. Serrano
cserrano@fileoneinc.com
Technical Support Specialist
FileONE, LLC
919.745.2197

Recibido: 31 de marzo de 2015.