



Estado Libre Asociado de Puerto Rico

Departamento de Estado

Informe estadístico del Registro de Corporaciones

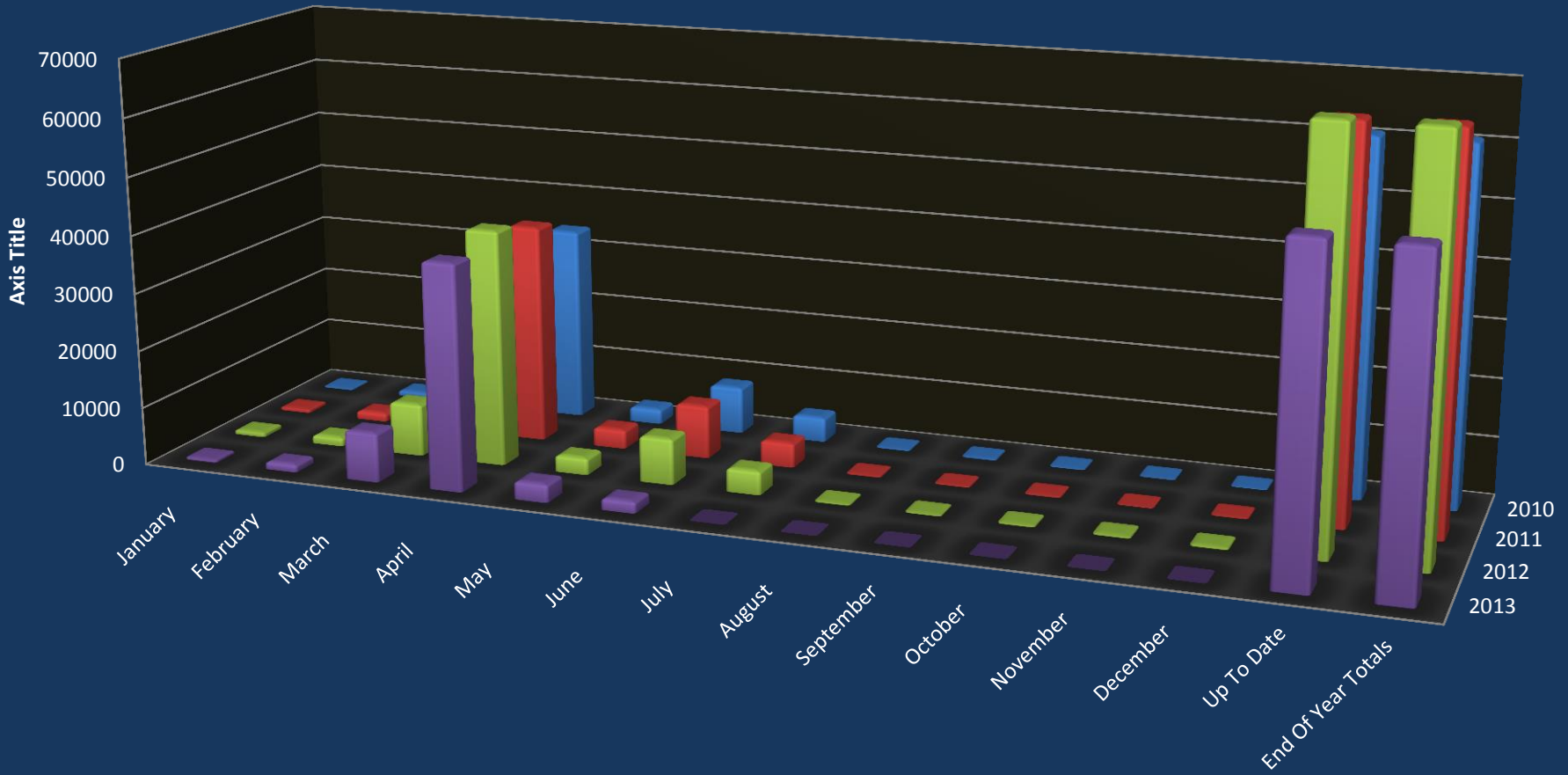
Data							
(Annual Reports/Annual Dues Comparison)							
YEAR	PROFIT	%	NON-PROFIT	%	LLC	%	TOTALS
2009	13,725	81%	2,431	14%	768	5%	16,924
2010	50,144	82%	9,220	15%	1,536	3%	60,900
2011	52,383	79%	10,462	16%	3,457	5%	66,302
2012	53,369	77%	10,795	16%	4,915	7%	69,079
2013	39,625	72%	8,784	16%	6,337	12%	54,746
DIFF:10-09	36,419	265%	6,789	279%	768	100%	43,976
DIFF:11-10	2,239	4%	1,242	13%	1,921	125%	5,402
DIFF:12-11	986	2%	333	3%	1,458	42%	2,777
DIFF:13-12	-13,744	-26%	-2,011	-19%	1,422	29%	-14,333

New Creations by Class		Distribution of Hours			
Class	%			Qty.	%
CLOSE_CORPORATION	8.71%	Total Creations Filed		39,495	
CORPORATION	68.34%	Business hours (8-5)		27,757	70.3%
LIMITED_LIABILITY_COMPANY	18.08%	Off Business hours except SAT and SUN		8,092	20.5%
LIMITED_LIABILITY_PARTNERSHIP	0.21%	SAT and SUN		3,646	9.2%
MUNICIPAL_DEVELOPMENT	0.01%	Certificates of Good Standing			
PROFESSIONAL_CORPORATION	4.62%	Year	Paper	Online	Combined
SPECIAL_EMPLOYEE_OWNED	0.04%	2010	13,593	134	13,727
TOTAL	100.00%	2011	13,304	4,851	18,155
		2012	5,116	18,554	23,670
		2013	3,037	27,242	30,279
		2014	706	17,462	18,168

Online New Creations				New Creations Comparison (Paper VS Online)			
Month-Year	For Profit	Non Profit	Sub Total	Month-Year	Online	Paper	Combined
May-11	483	204	687	May-11	687	697	1,384
Jun-11	748	300	1,048	Jun-11	1,048	375	1,423
Jul-11	607	291	898	Jul-11	898	303	1,201
Aug-11	640	240	880	Aug-11	880	289	1,169
Sep-11	721	324	1,045	Sep-11	1,045	371	1,416
Oct-11	728	328	1,056	Oct-11	1,056	272	1,328
Nov-11	638	275	913	Nov-11	913	189	1,102
Dec-11	597	208	805	Dec-11	805	196	1,001
Jan-12	796	342	1,138	Jan-12	1,138	138	1,276
Feb-12	795	372	1,167	Feb-12	1,167	155	1,322
Mar-12	884	339	1,223	Mar-12	1,223	189	1,412
Apr-12	744	317	1,061	Apr-12	1,061	177	1,238
May-12	883	311	1,194	May-12	1,194	186	1,380
Jun-12	803	313	1,116	Jun-12	1,116	134	1,250
Jul-12	662	275	937	Jul-12	937	115	1,052
Aug-12	806	307	1,113	Aug-12	1,113	115	1,228
Sep-12	770	288	1,058	Sep-12	1,058	103	1,161
Oct-12	854	302	1,156	Oct-12	1,156	105	1,261
Nov-12	556	211	767	Nov-12	767	71	838

Online New Creations				New Creations Comparison (Paper VS Online)			
Dec-12	600	233	833	Dec-12	833	77	910
Jan-13	1,027	296	1,323	Jan-13	1,323	116	1,439
Feb-13	910	387	1,297	Feb-13	1,297	104	1,401
Mar-13	835	342	1,177	Mar-13	1,177	115	1,292
Apr-13	879	373	1,252	Apr-13	1,252	153	1,405
May-13	893	323	1,216	May-13	1,216	144	1,360
Jun-13	784	292	1,076	Jun-13	1,076	116	1,192
Jul-13	748	251	999	Jul-13	999	105	1,104
Aug-13	925	319	1,244	Aug-13	1,244	123	1,367
Sep-13	763	277	1,040	Sep-13	1,040	98	1,138
Oct-13	777	284	1,061	Oct-13	1,061	111	1,172
Nov-13	596	221	817	Nov-13	817	100	917
Dec-13	600	188	788	Dec-13	788	108	896
Jan-14	849	301	1,150	Jan-14	1,150	117	1,267
Feb-14	773	275	1,048	Feb-14	1,048	124	1,172
Mar-14	906	333	1,239	Mar-14	1,239	107	1,346
Apr-14	770	319	1,089	Apr-14	1,089	87	1,176
May-14	921	293	1,214	May-14	1,214	87	1,301
Jun-14	293	84	377	Jun-14	377	38	415

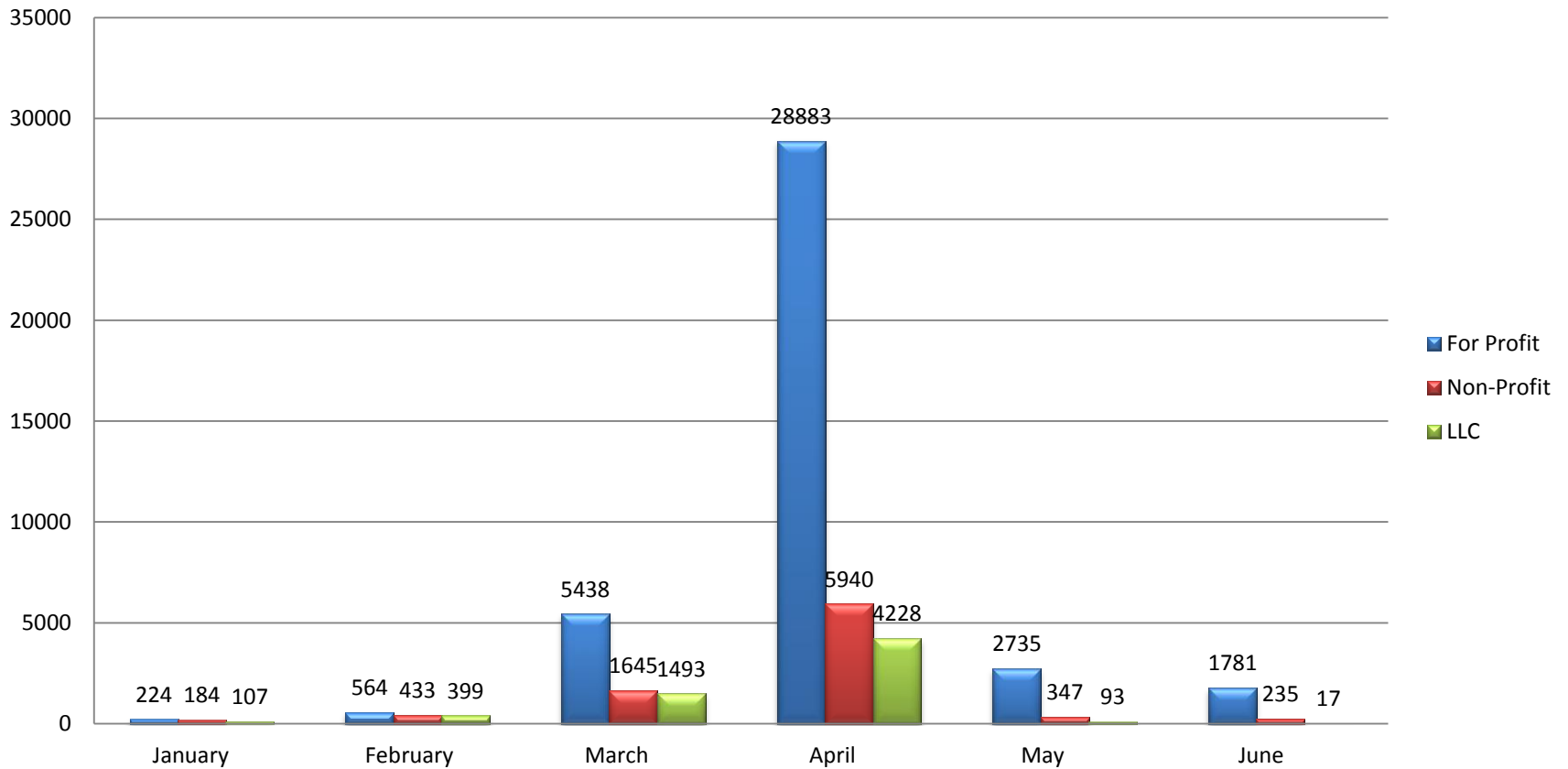
2013 Annual Report / Annual Dues



	January	February	March	April	May	June	July	August	September	October	November	December	Up To Date	End Of Year Totals
2013	515	1396	8576	39051	3175	2033	0	0	0	0	0	0	54746	54746
2012	799	1529	9114	40969	2934	7980	4114	298	282	316	340	404	69079	69079
2011	618	1504	8251	38099	3328	9198	4296	251	196	238	131	192	66302	66302
2010	264	970	9565	33925	2635	8215	4308	239	260	205	171	143	60900	60900

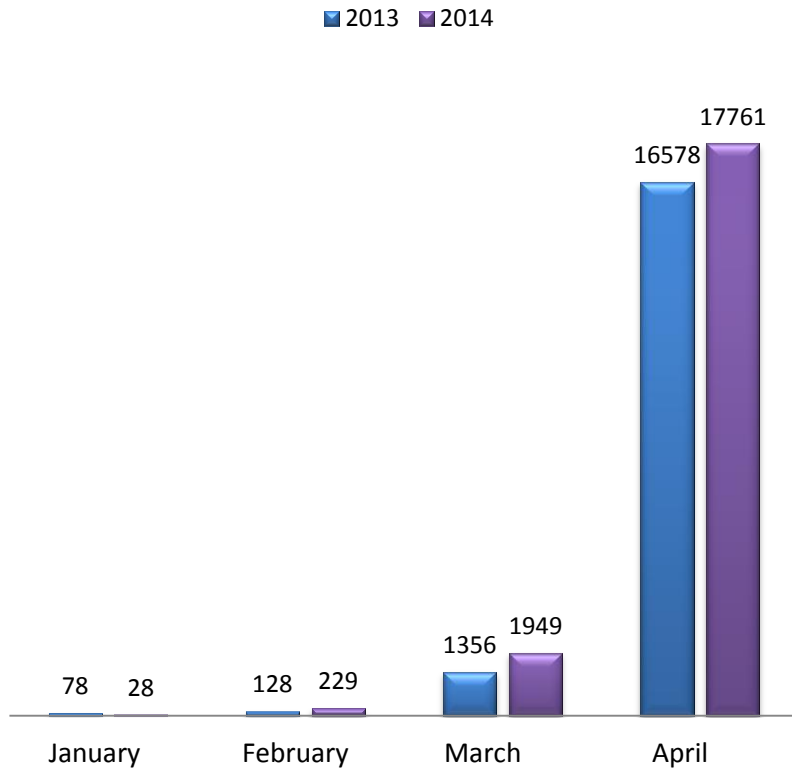
Current Filing Season

2013 Season - Annual Report/Due

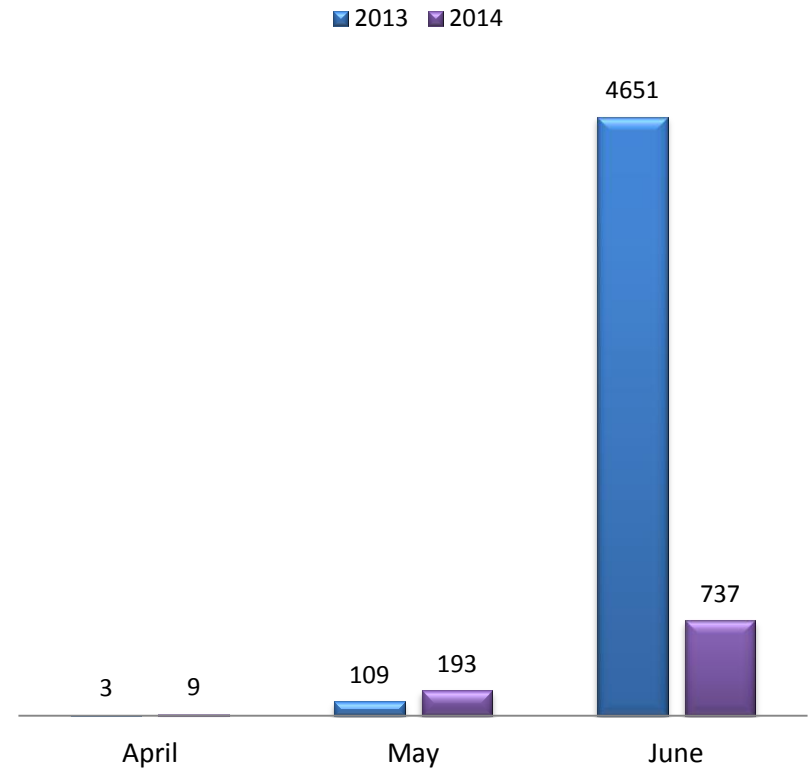


Extensions Two-Year Comparison

First Extension (Prórrogas) Two-Years Comparison

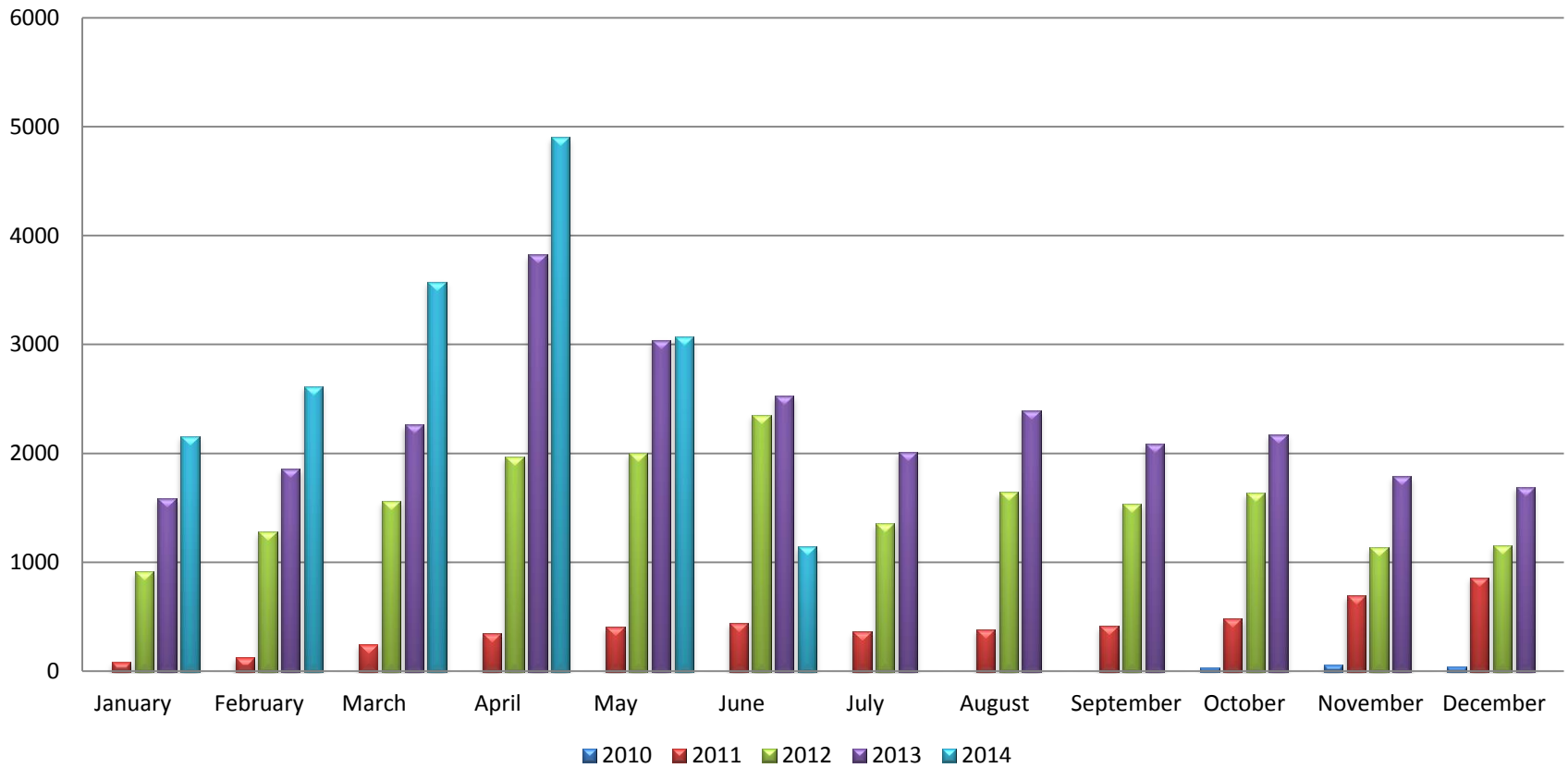


Second Extension (Prórrogas) Two-Years Comparison



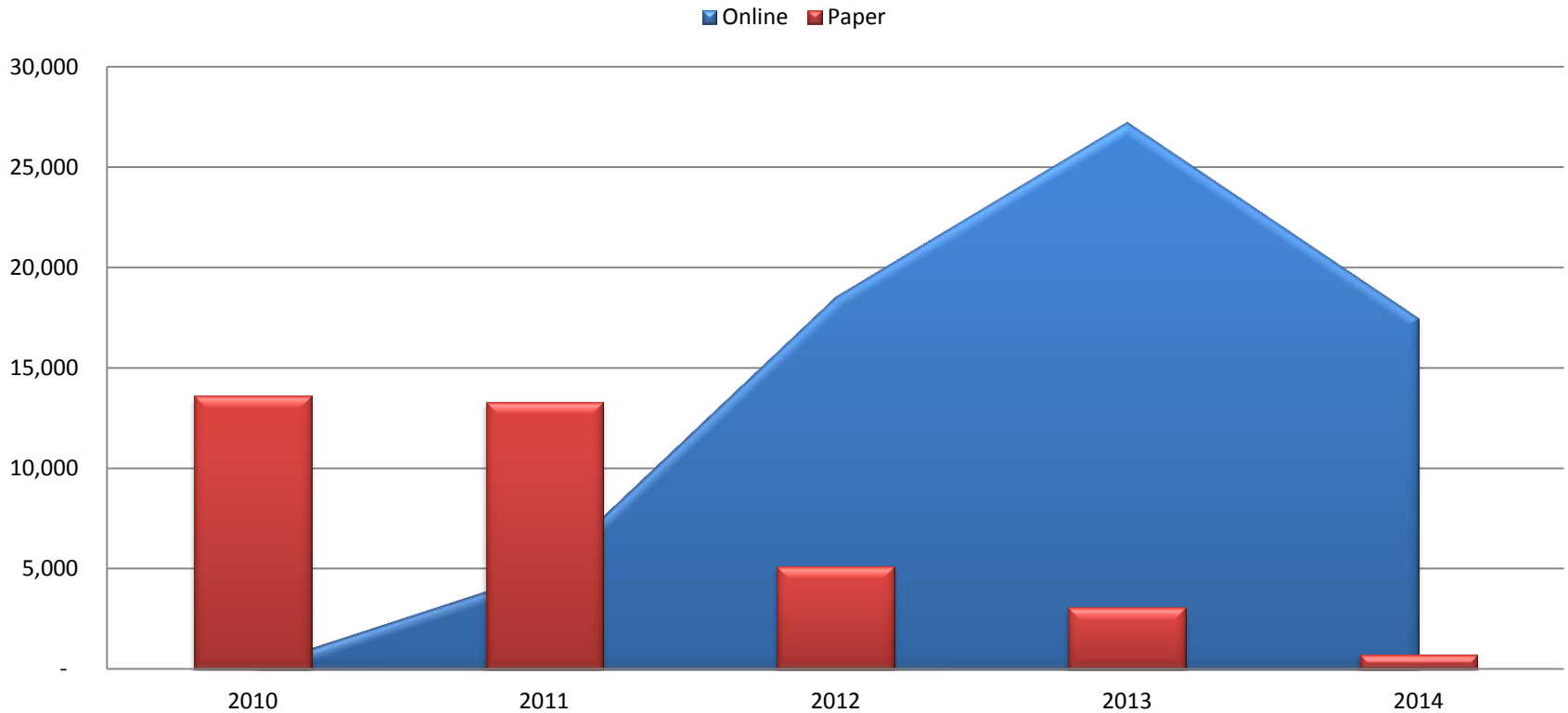
Online Certificates of Good Standings Multi-Years Comparison

Online Goodstanding



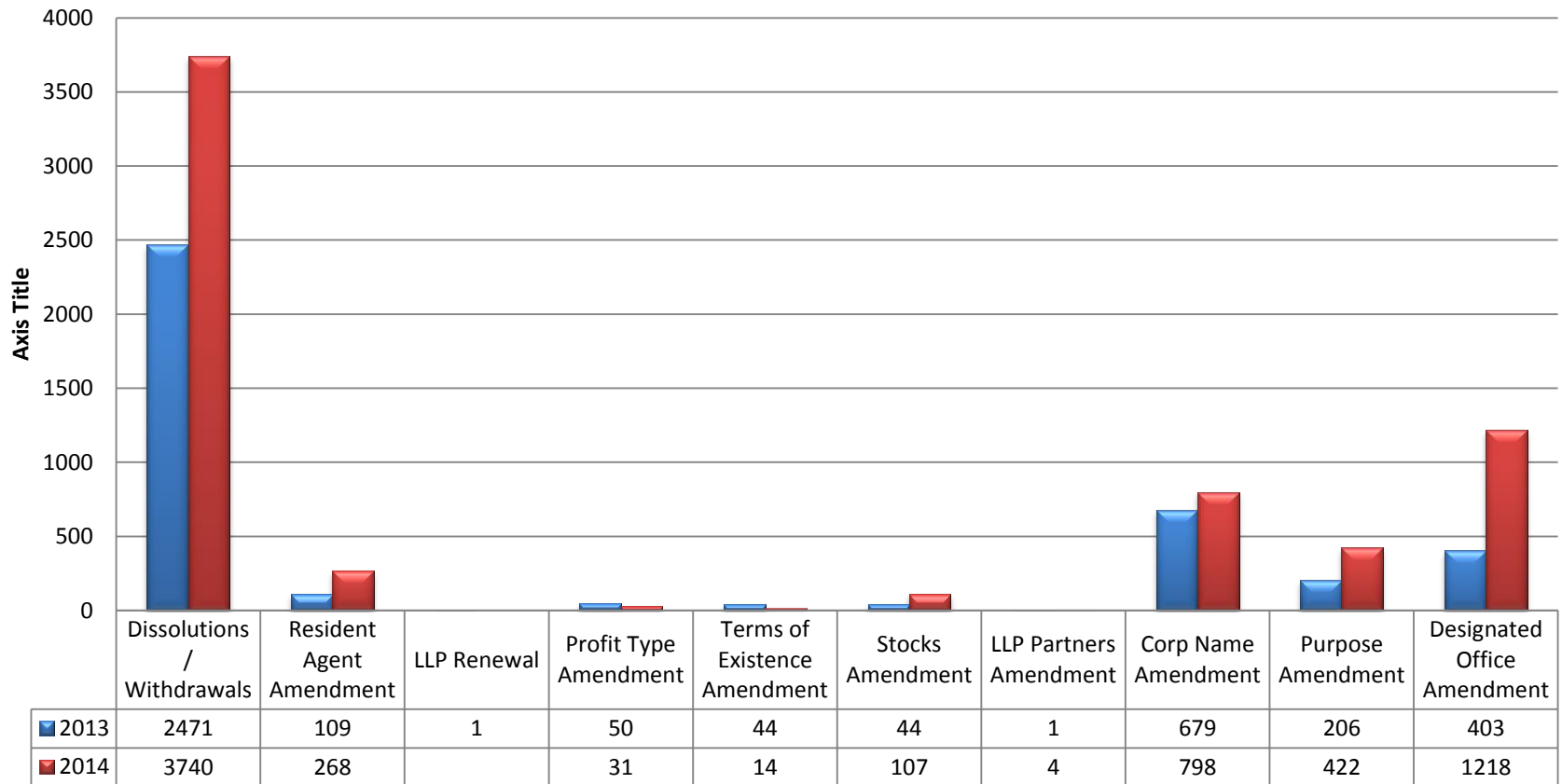
Certificates of Good Standings Comparison

Goodstanding Certificates Online vs Paper

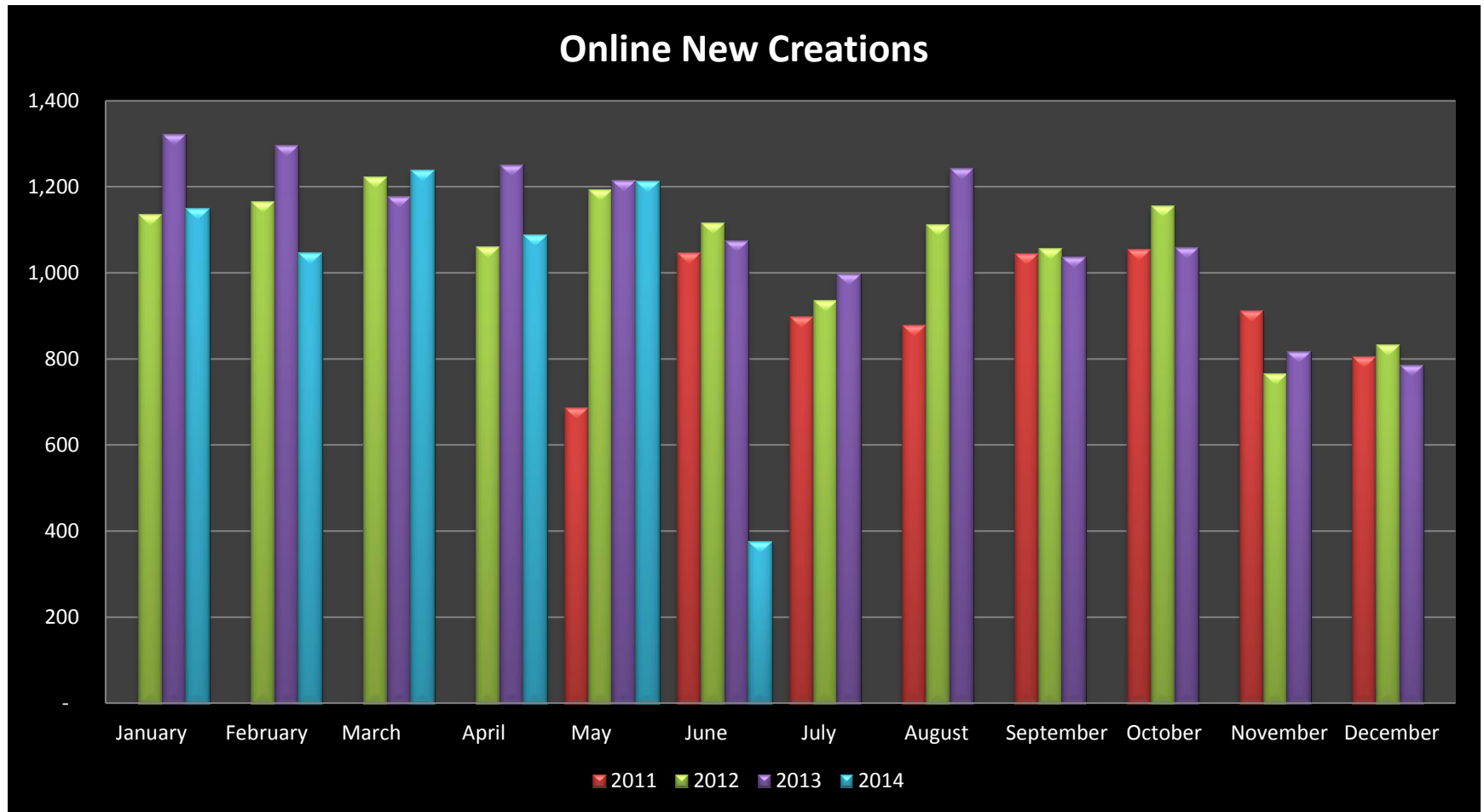


New Online Transactions

Additional Online Transactions



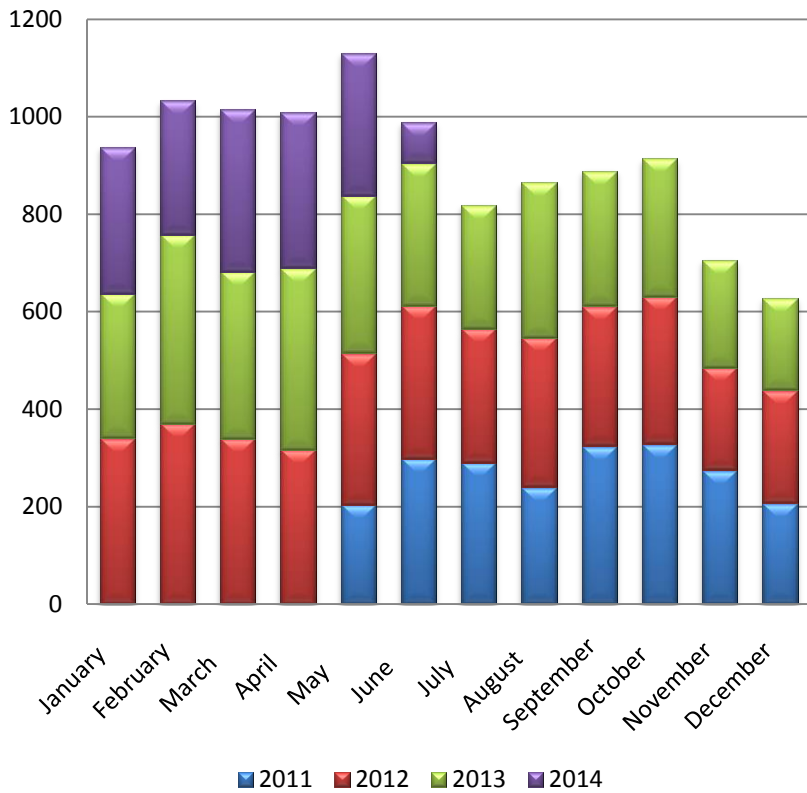
Multi-Years* Online New Creations Trend



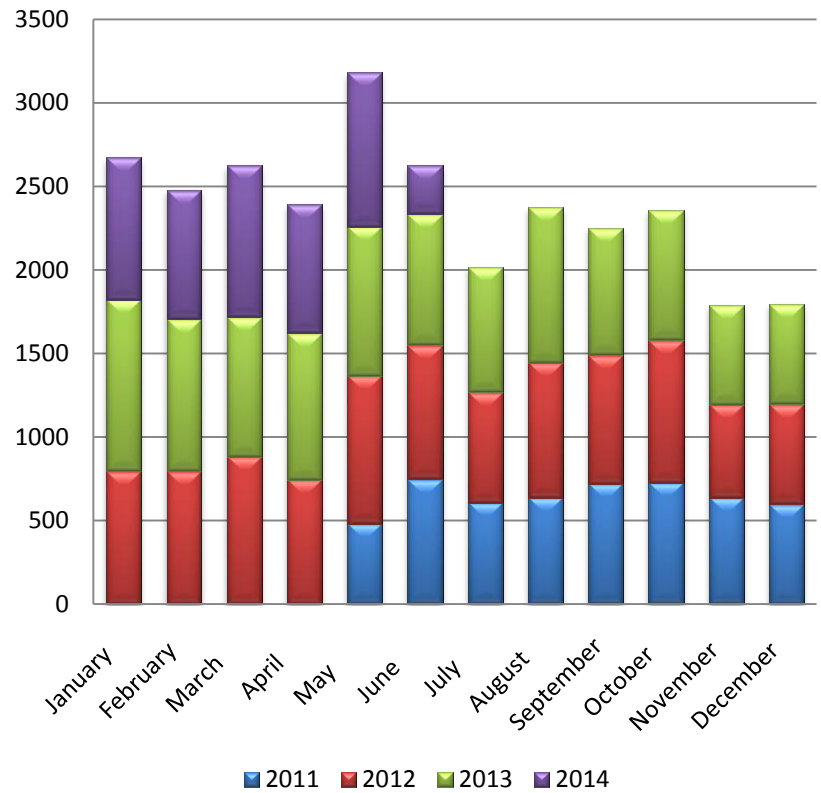
*Online New Creations Started on May 2011

Online New Creations by Type

Non-Profits

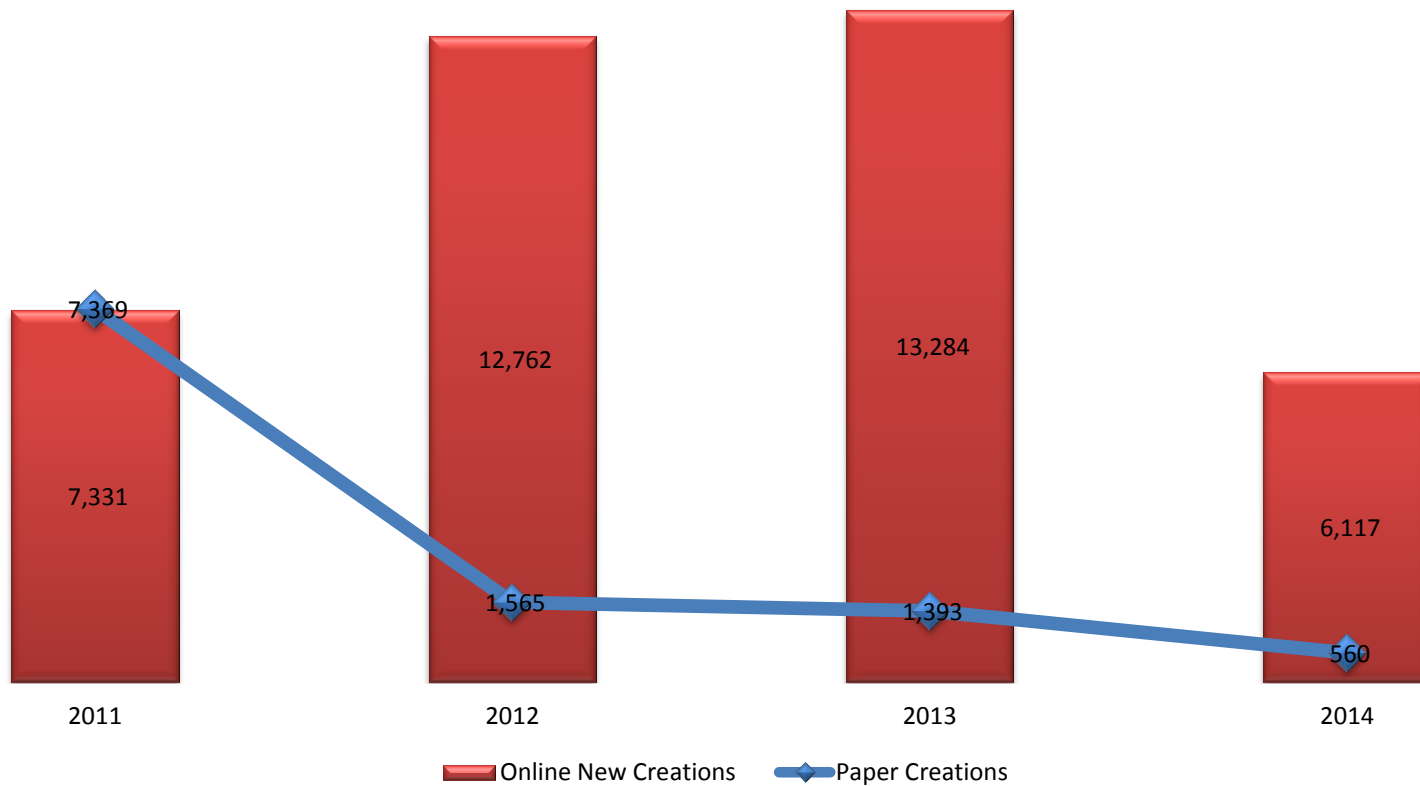


For Profits



New Creations Comparison

Online vs Paper New Creations





William Juarbe

IT Coordinator

FileONE, LLC

Email:

wjuarbe@fileoneinc.com

Tel. (919) 854-4123 Ext. 185

Recibido: 11 de junio de 2014