



Estado Libre Asociado de Puerto Rico

Departamento de Estado

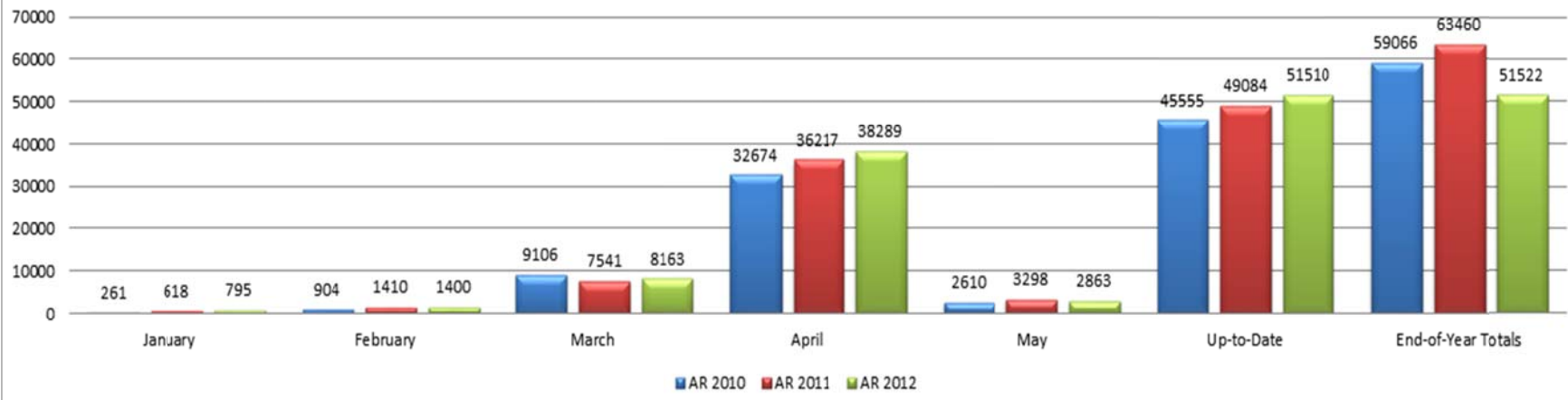
Informe estadístico del Registro de Corporaciones

Total Numbers as of 6/11/2013							
COMPARACION INFORMES ANUALES / DERECHOS ANUALES							
(Annual Reports/Annual Dues Comparison)							
YEAR	PROFIT	%	NON-PROFIT	%	LLC	%	TOTALS
2009	13,725	81%	2,431	14%	768	5%	16,924
2010	48,846	83%	8,684	15%	1,536	3%	59,066
2011	50,290	79%	9,712	16%	3,458	6%	63,460
2012	38,770	75%	8,049	16%	4,703	8%	51,522
DIFF:10-09	35,121	256%	6,253	257%	768	100%	42,142
DIFF:11-10	1,444	3%	1,028	12%	1,922	125%	-7,544
DIFF:12-11	-11,520	-23%	-1,663	-17%	1,245	36%	-21,318

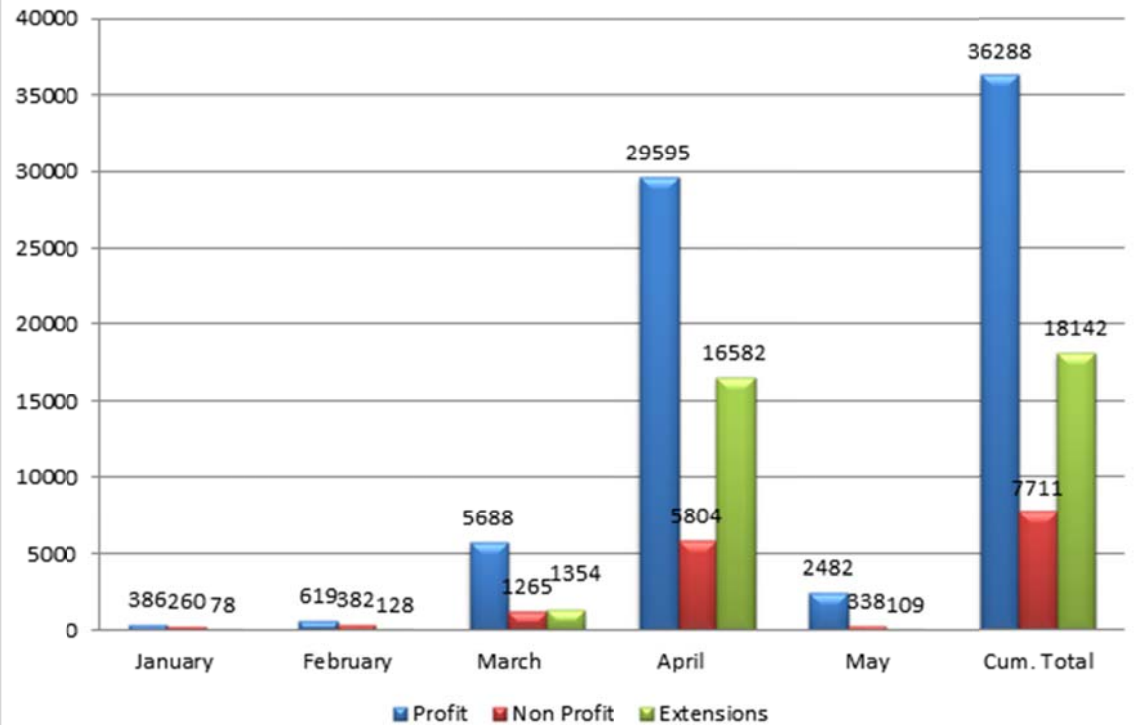
RADICACIONES CON PENALIDADES							
(Filings With Penalties)							
YEAR	PROFIT	%	NON-PROFIT	%	LLC	%	TOTALS
2009	285	39%	164	23%	278	38%	727
2010	1,410	65%	642	29%	128	6%	2,180
2011	16,315	91%	1,634	9%	0	0%	17,949
DIFF:10-09	1,125	395%	478	291%	-150	-54%	1,453
DIFF:11-10	14,905		992		-54%		200%

CERTIFICADOS DE CUMPLIMIENTO			REGISTRO DE CORPORACIONES			
(COGS Online)			(New Creations)			
2010	134		MONTH	PROFIT	NON-PROF	SUB-TOT
2011	4851		May-11	483	204	687
2012	18556		Jun-11	748	300	1,048
2013	12578		Jul-11	607	291	898
TOTALS	36119		Aug-11	640	240	880
			Sep-11	721	324	1,045
(New Creations by Class)			Oct-11	728	328	1,056
Class	%		Nov-11	638	275	913
Close Corporation	9.01%		Dec-11	598	208	806
Corporation	70.49%		Jan-12	796	342	1,138
Limited Liability Company	15.63%		Feb-12	795	372	1,167
Limited Liability Partnership	0.19%		Mar-12	881	342	1,223
Municipal Development	0.01%		Apr-12	744	317	1,061
Professional Corporation	4.64%		May-12	883	311	1,194
Special Employee Owned	0.04%		Jun-12	803	313	1,116
			Jul-12	662	275	937
			Aug-12	806	307	1,113
(Distribution of Hours)			Sep-12	771	288	1,059
Total Creations filed	26,797		Oct-12	854	302	1,156
Business hours (8-5)	18,822	70.2%	Nov-12	557	211	768
Off Business hours except SAT and	5,501	20.5%	Dec-12	603	233	836
SAT and SUN	2,474	9.2%	Jan-13	1,027	296	1,323
			Feb-13	910	387	1,297
			Mar-13	835	342	1,177
			Apr-13	881	373	1,254
			May-13	895	322	1,217

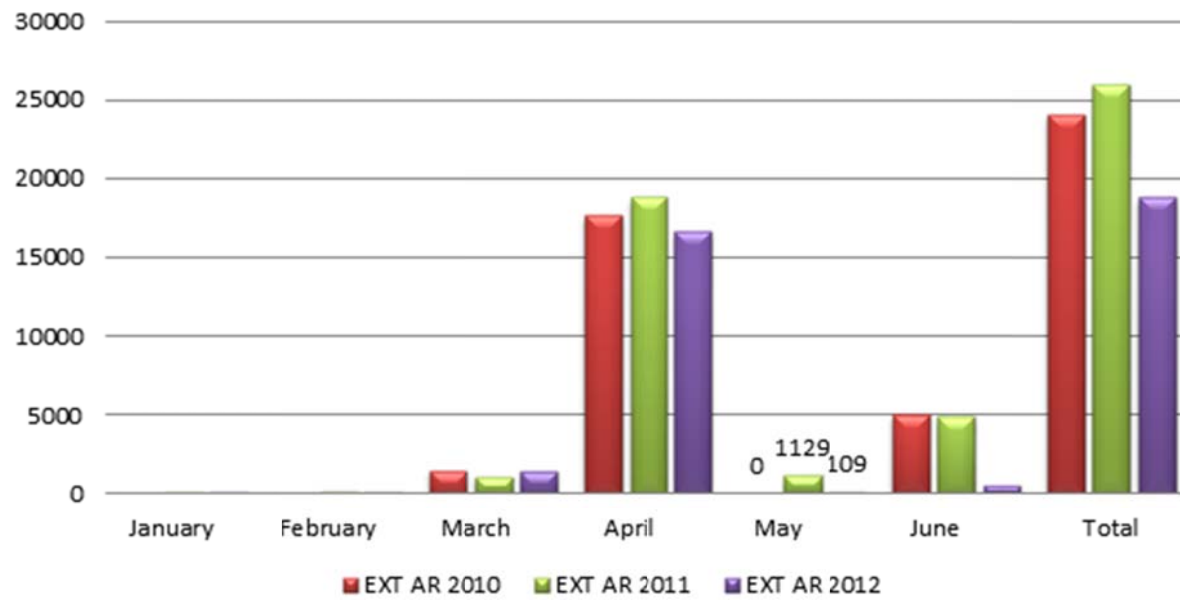
Annual Reports / Annual Dues



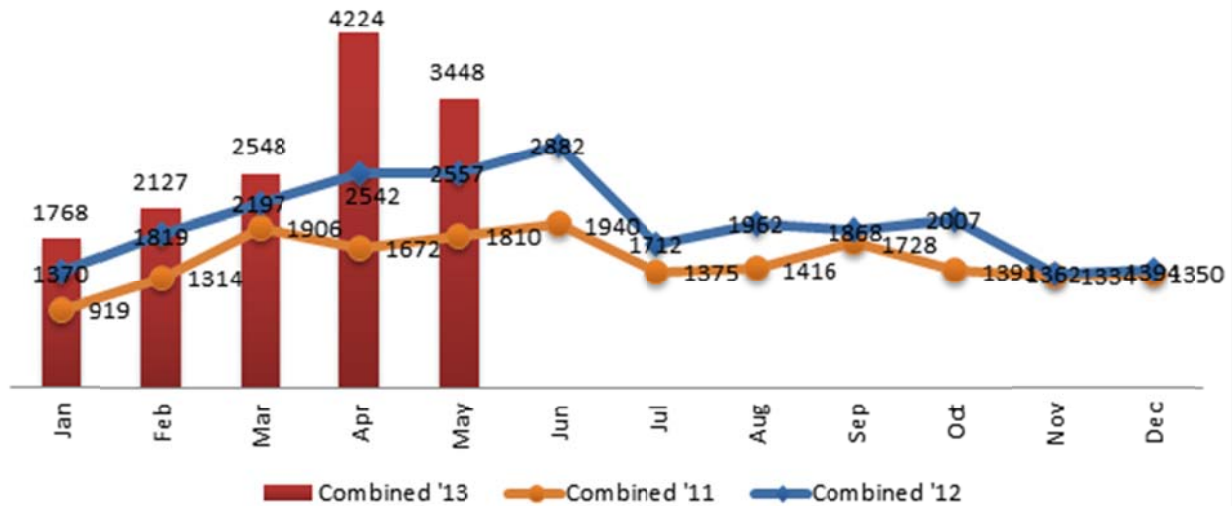
2012 Annual Report / Annual Dues



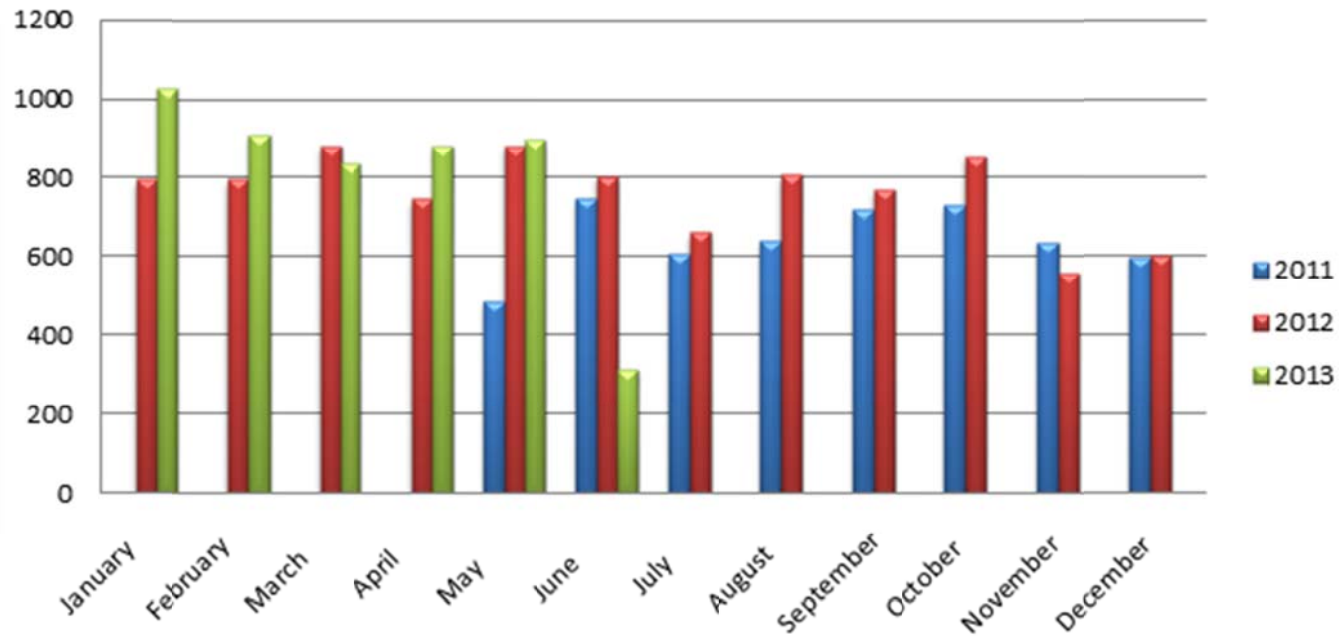
Extensions/Prórrogas



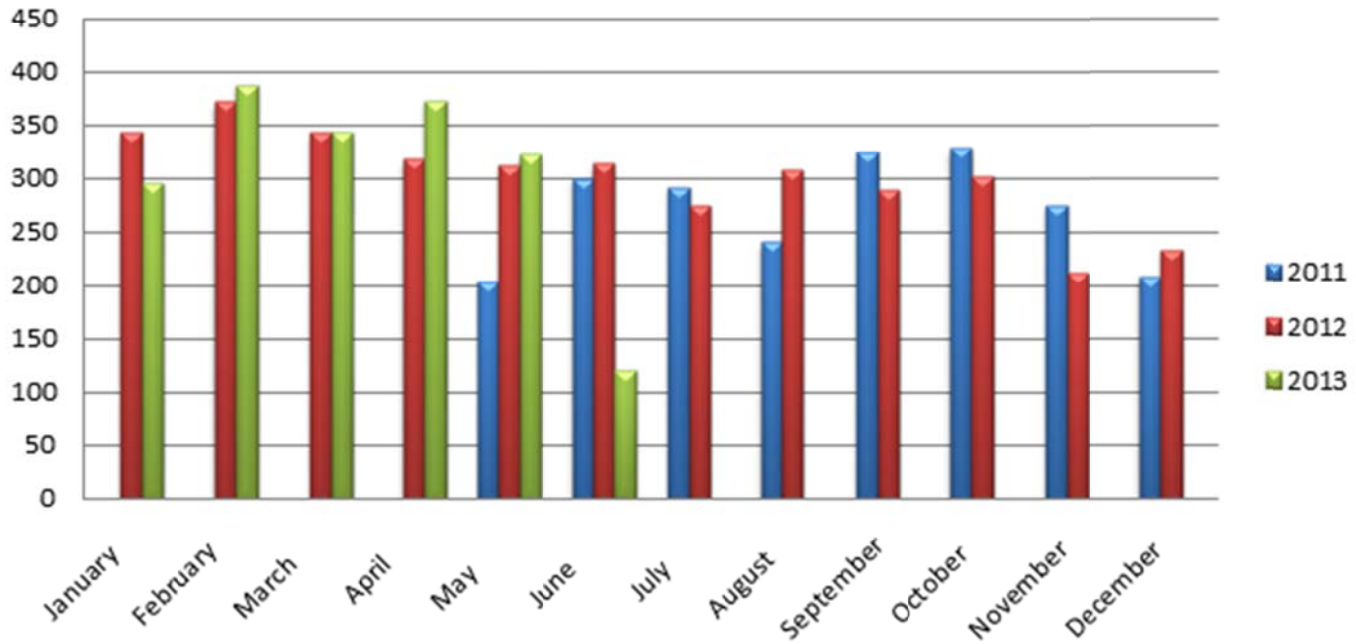
Good Standings - Multi-Years Comparison



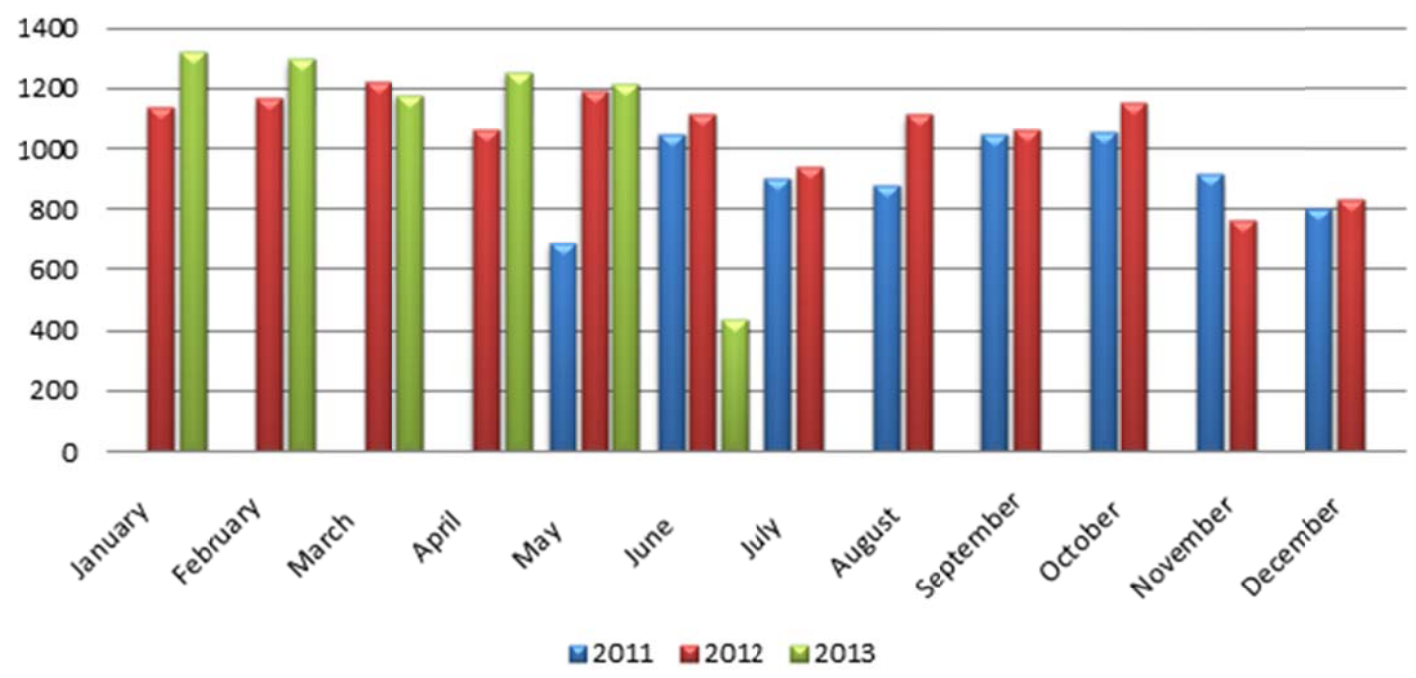
For Profits New Creations



Non-Profits New Creations

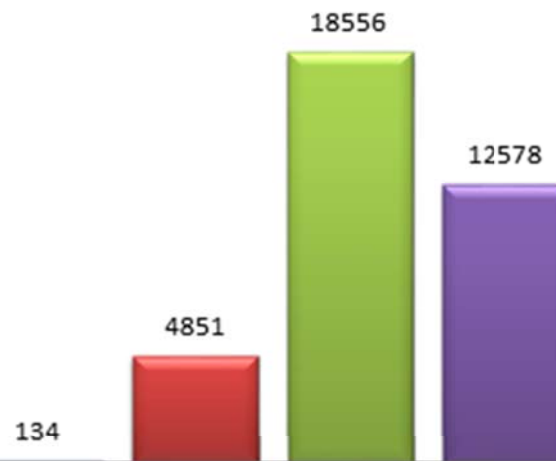


Online New Creations



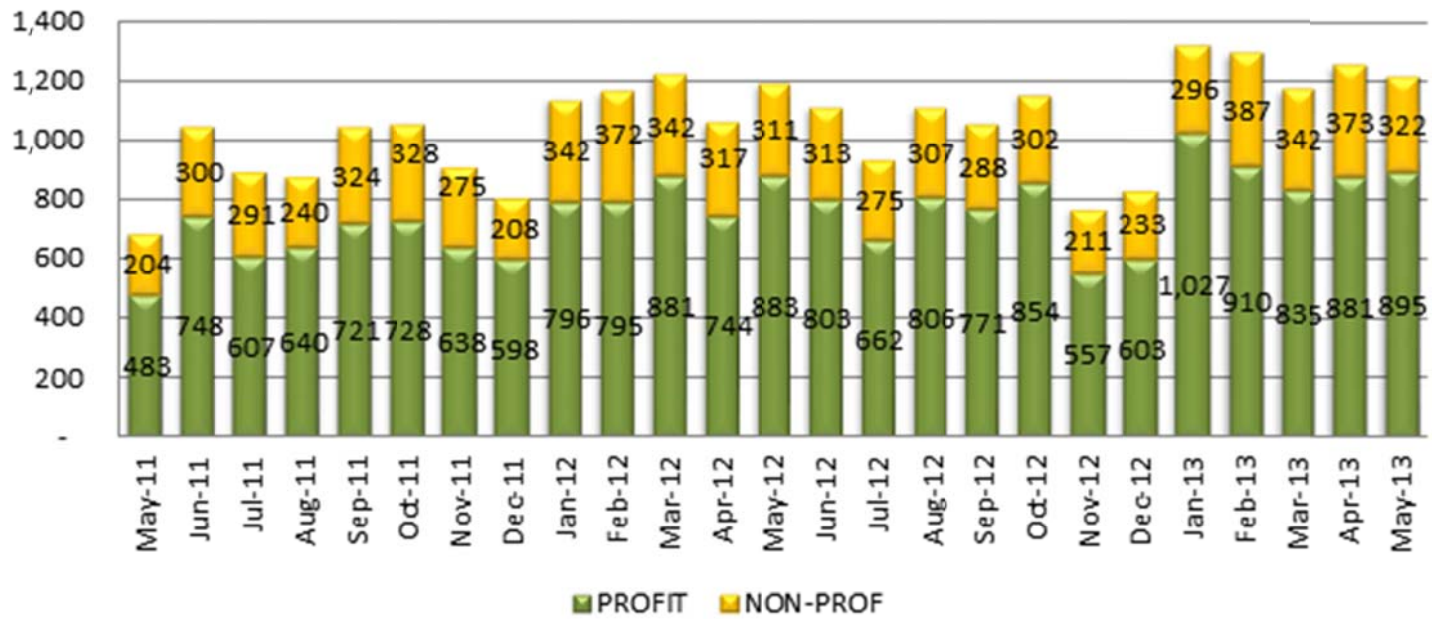
COGS Online

■ 2010 ■ 2011 ■ 2012 ■ 2013

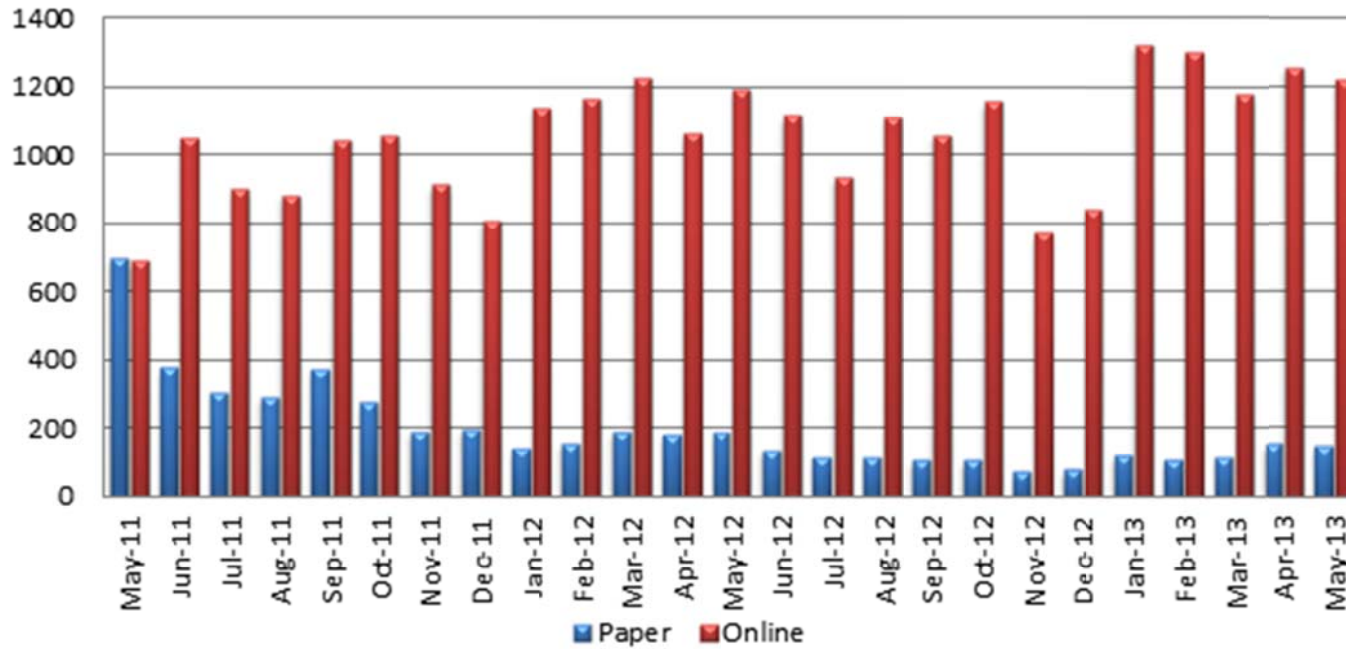


CERTIFICADOS DE CUMPLIMIENTO

New Creations Online By Type



New Creations Comparison By Month





Marvin R. Márquez

Project Manager

File ONE LLC.

(787) 309-8382

(787) 722-2121 X6247

<http://www.fileoneinc.com>

mmarquez@fileoneinc.com

Recibido: 12 de junio de 2013