



Estado Libre Asociado de Puerto Rico

Departamento de Estado

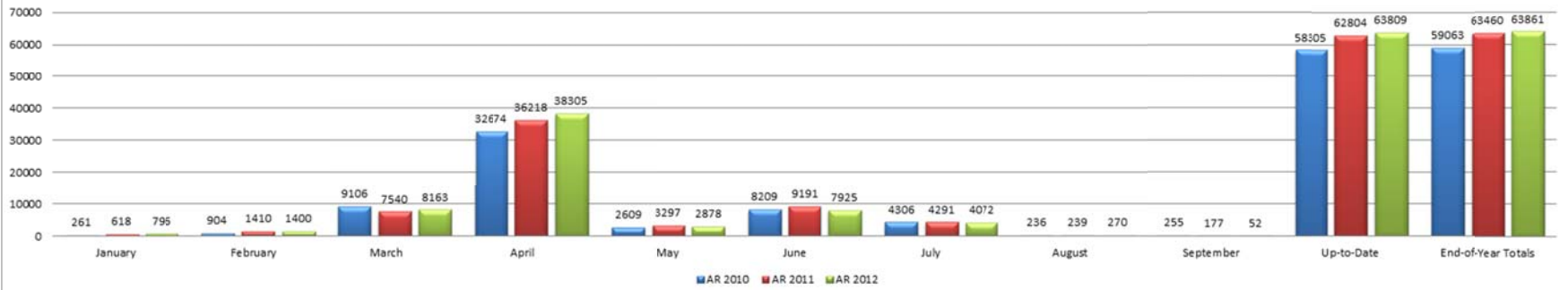
Informe estadístico del Registro de Corporaciones

Total Numbers as of 9/9/2013							
COMPARACION INFORMES ANUALES / DERECHOS ANUALES							
(Annual Reports/Annual Dues Comparison)							
YEAR	PROFIT	%	NON-PROFIT	%	LLC	%	TOTALS
2009	13,725	81%	2,431	14%	768	5%	16,924
2010	48,845	83%	8,682	15%	1,536	3%	59,063
2011	50,291	79%	9,712	16%	3,457	6%	63,460
2012	49,682	78%	9,405	15%	4,774	8%	63,861
DIFF:10-09	35,120	256%	6,251	257%	768	100%	42,139
DIFF:11-10	1,446	3%	1,030	12%	1,921	125%	4,397
DIFF:12-11	-609	-1%	-307	-3%	1,317	38%	401

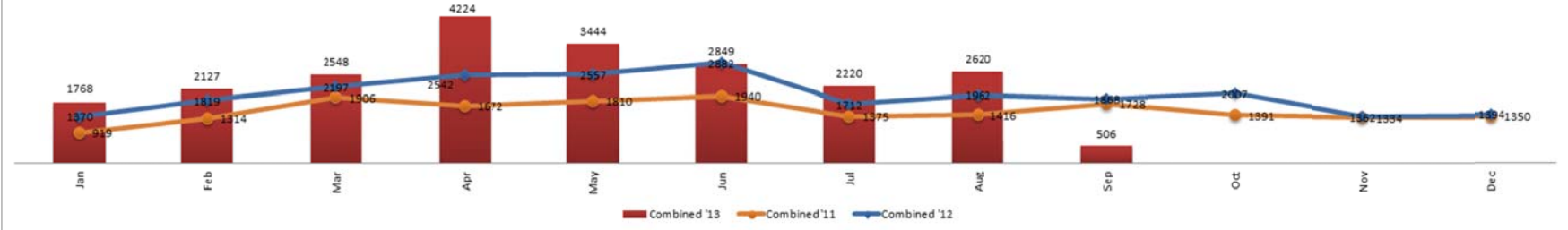
RADICACIONES CON PENALIDADES							
(Filings With Penalties)							
YEAR	PROFIT	%	NON-PROFIT	%	LLC	%	TOTALS
2009	285	39%	164	23%	278	38%	727
2010	1,410	65%	642	29%	128	6%	2,180
2011	16,315	91%	1,634	9%	0	0%	17,949
DIFF:10-09	1,125	395%	478	291%	-150	-54%	1,453
DIFF:11-10	14,905		992		-54%		200%
DIFF:12-11							

CERTIFICADOS DE CUMPLIMIENTO			REGISTRO DE CORPORACIONES			
(COGS Online)			(New Creations)			
2010	134		MONTH	PROFIT	NON-PROF	SUB-TOT
2011	4851		May-11	483	204	687
2012	18556		Jun-11	748	300	1,048
2013	19973		Jul-11	607	291	898
TOTALS	43514		Aug-11	640	240	880
			Sep-11	721	324	1,045
(New Creations by Class)			Oct-11	728	328	1,056
Class	%		Nov-11	638	275	913
Close Corporation	9.99%		Dec-11	598	208	806
Corporation	77.02%		Jan-12	796	342	1,138
Limited Liability Company	17.54%		Feb-12	795	372	1,167
Limited Liability Partnership	0.22%		Mar-12	881	342	1,223
Municipal Development	0.01%		Apr-12	744	317	1,061
Professional Corporation	5.17%		May-12	883	311	1,194
Special Employee Owned	0.04%		Jun-12	803	313	1,116
			Jul-12	662	275	937
			Aug-12	806	307	1,113
(Distribution of Hours)			Sep-12	771	288	1,059
Total Creations filed	29,963		Oct-12	854	302	1,156
Business hours (8-5)	21,068	70.3%	Nov-12	557	211	768
Off Business hours except SAT and	6,141	20.5%	Dec-12	603	233	836
SAT and SUN	2,754	9.2%	Jan-13	1,027	296	1,323
			Feb-13	795	387	1,182
			Mar-13	835	342	1,177
			Apr-13	879	373	1,252
			May-13	893	323	1,216
			Jun-13	784	293	1,077
			Jul-13	749	251	1,000
			Aug-13	925	319	1,244
			Sep-13	211	70	281

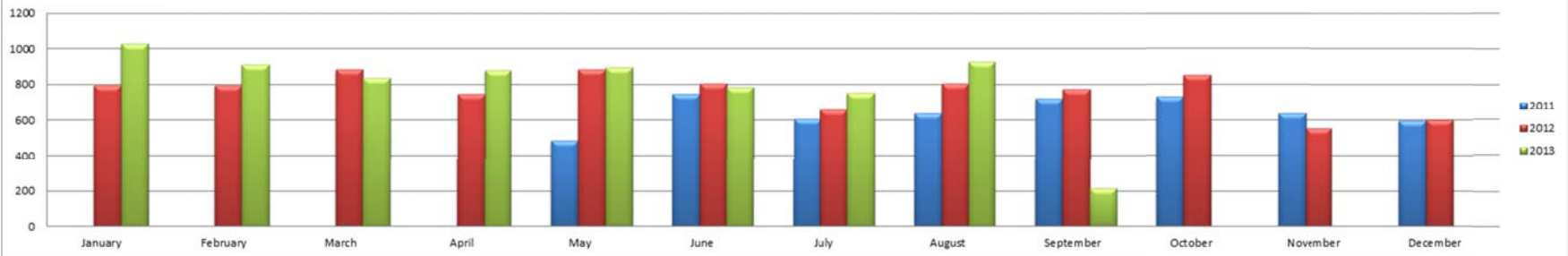
Annual Reports / Annual Dues



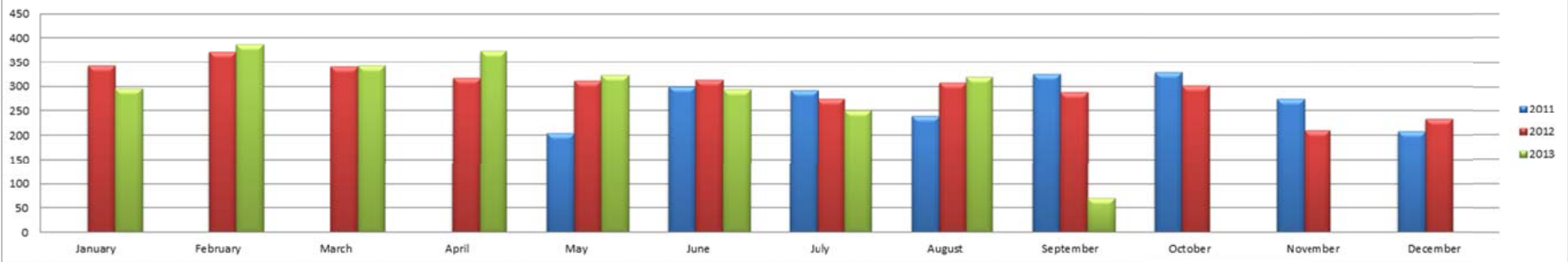
Good Standings - Multi-Years Comparison

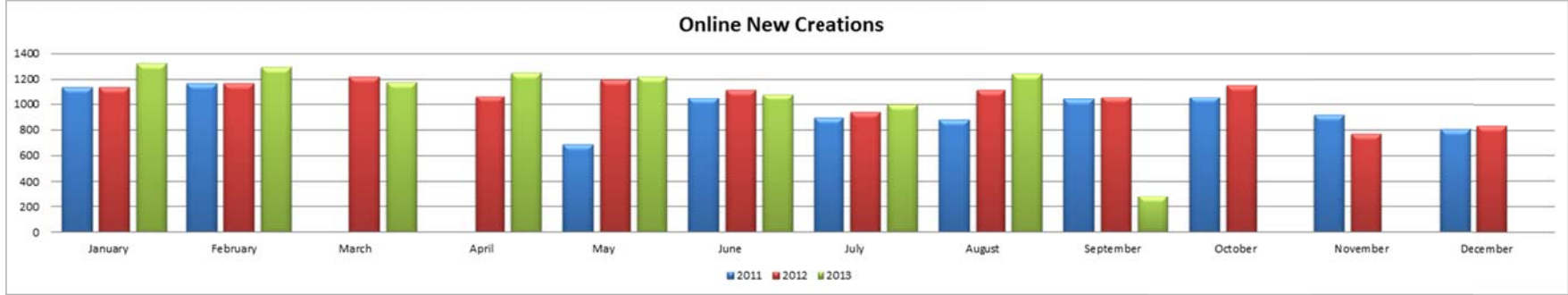


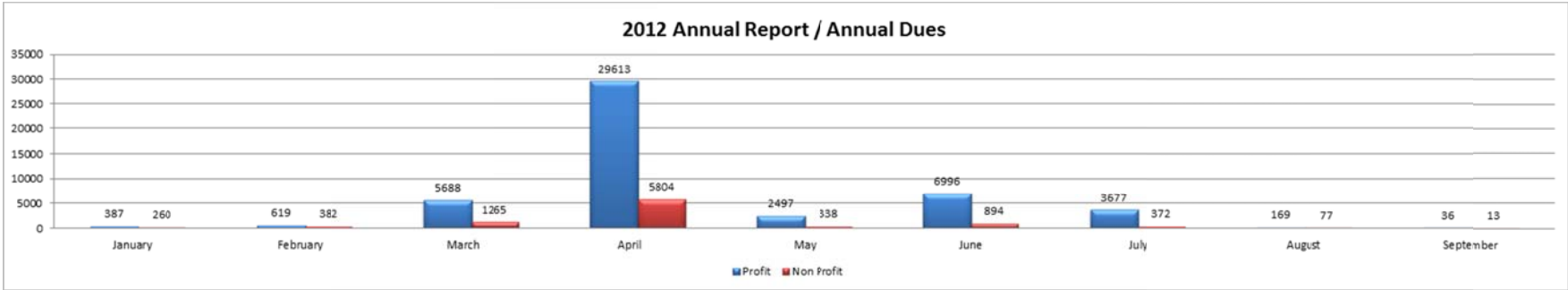
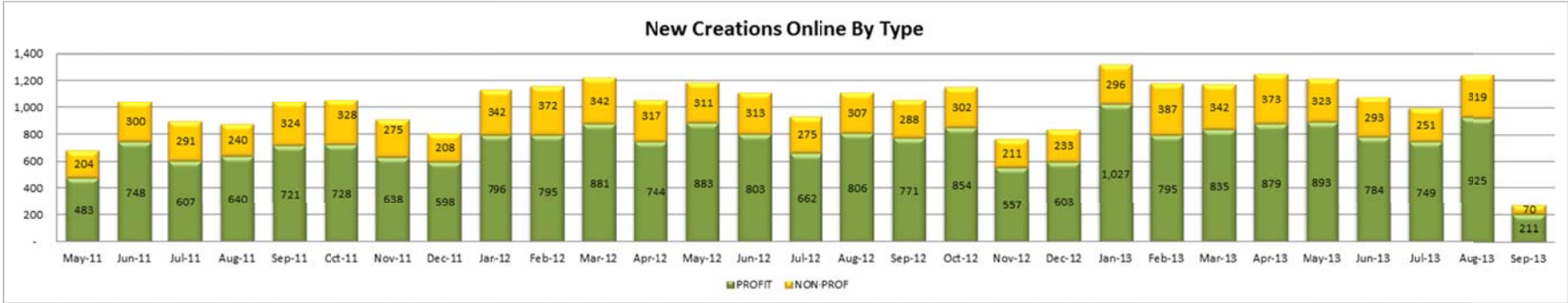
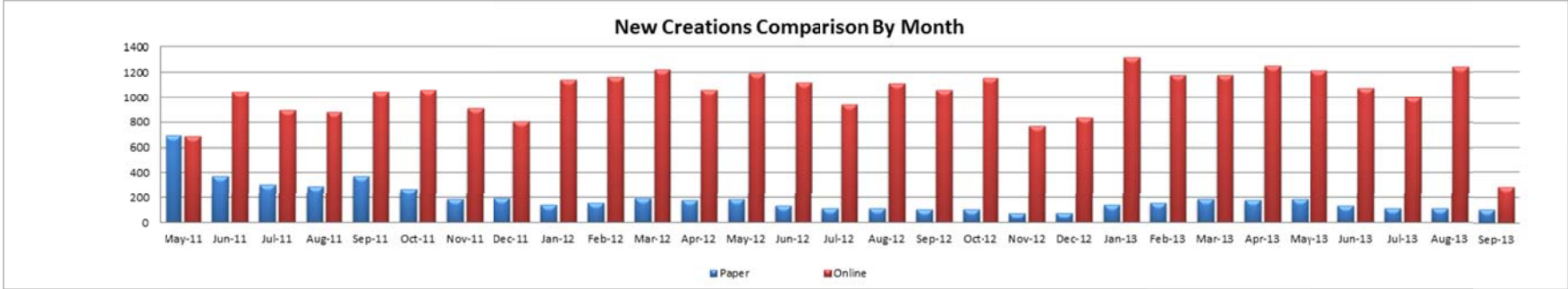
For Profits New Creations

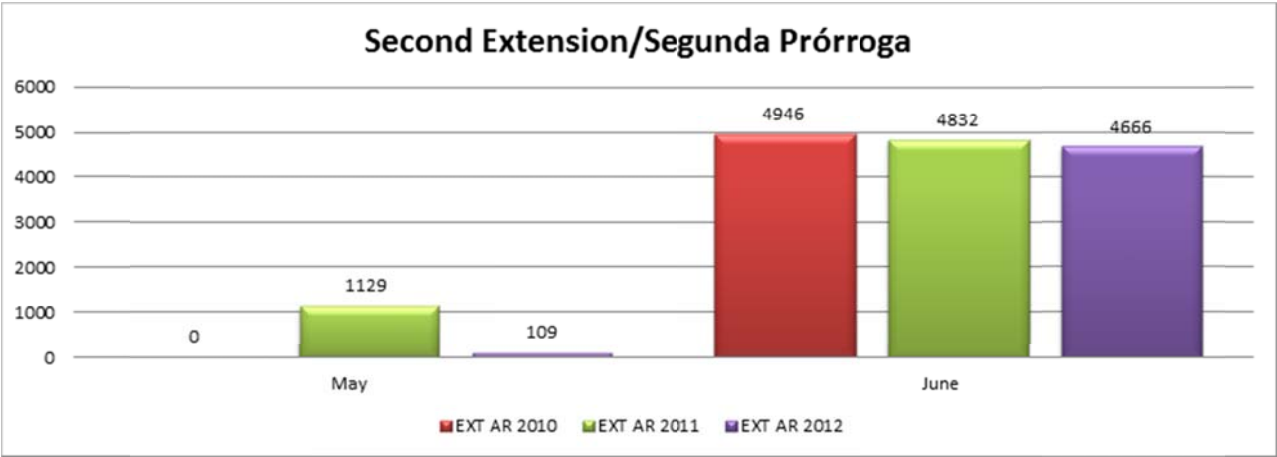
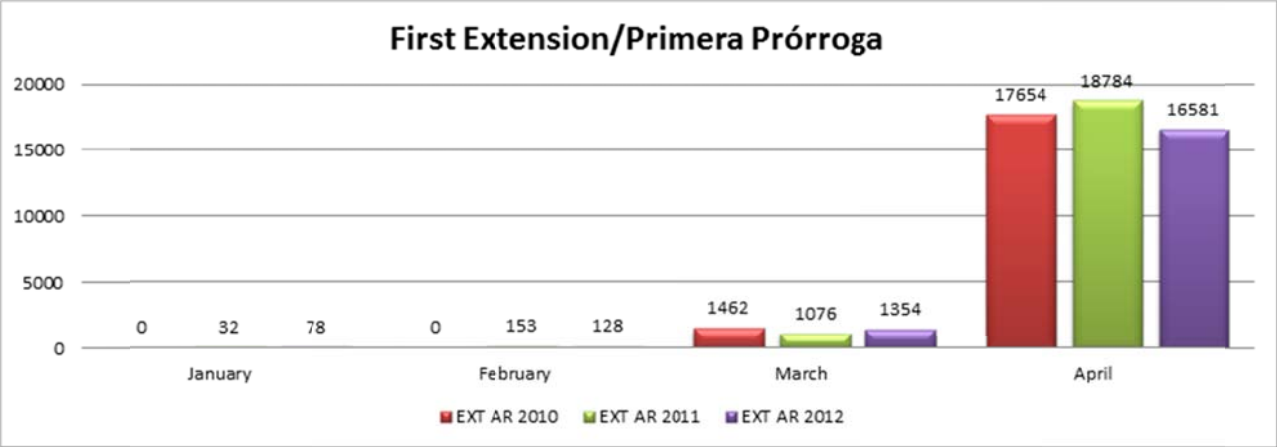


Non-Profits New Creations











Carlos D. Serrano

Technology Coordinator

FileONE, LLC

Email: cserrano@fileoneinc.com

Tel 787.722.2121 Ext: 4348

Recibido: 10 de septiembre de 2013