



Estado Libre Asociado de Puerto Rico

## Departamento de Estado

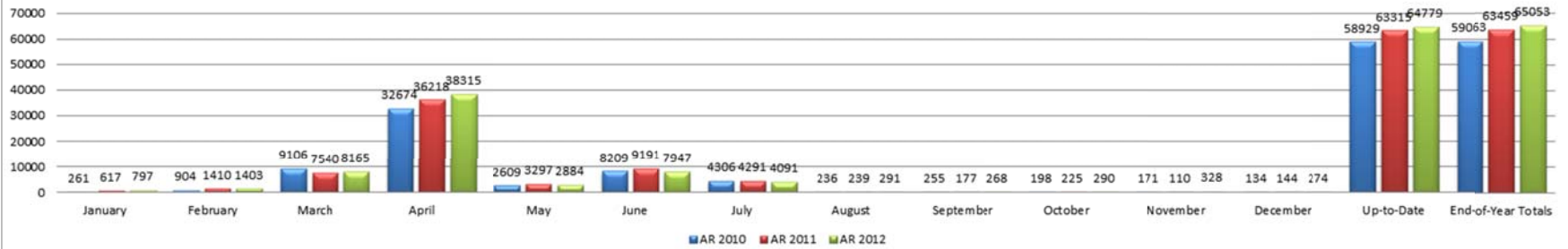
# Informe estadístico del Registro de Corporaciones

Total Numbers as of 12/18/2013							
COMPARACION INFORMES ANUALES / DERECHOS ANUALES							
(Annual Reports/Annual Dues Comparison)							
YEAR	PROFIT	%	NON-PROFIT	%	LLC	%	TOTALS
2009	13,725	81%	2,431	14%	768	5%	<b>16,924</b>
2010	48,845	83%	8,682	15%	1,536	3%	<b>59,063</b>
2011	50,290	79%	9,712	16%	3,457	6%	<b>63,459</b>
2012	50,459	78%	9,699	15%	4,895	8%	<b>65,053</b>
DIFF:10-09	35,120	256%	6,251	257%	768	100%	42,139
DIFF:11-10	1,445	3%	1,030	12%	1,921	125%	4,396
DIFF:12-11	169	0%	-13	0%	1,438	42%	1,594

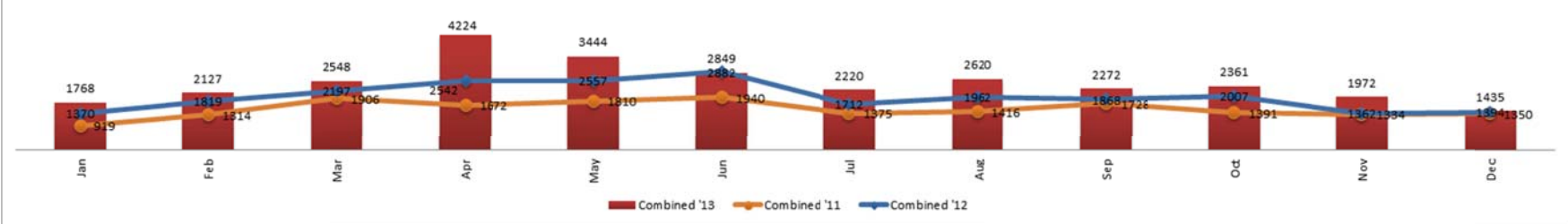
<b>RADICACIONES CON PENALIDADES</b>							
<b>(Filings With Penalties)</b>							
<b>YEAR</b>	<b>PROFIT</b>	<b>%</b>	<b>NON-PROFIT</b>	<b>%</b>	<b>LLC</b>	<b>%</b>	<b>TOTALS</b>
2009	<b>285</b>	39%	<b>164</b>	23%	<b>278</b>	38%	<b>727</b>
2010	<b>1,410</b>	65%	<b>642</b>	29%	<b>128</b>	6%	<b>2,180</b>
2011	<b>16,315</b>	91%	<b>1,634</b>	9%	<b>0</b>	0%	<b>17,949</b>
DIFF:10-09	<b>1,125</b>	395%	<b>478</b>	291%	<b>-150</b>	-54%	<b>1,453</b>
DIFF:11-10	14,905		992		<b>-54%</b>		<b>200%</b>

CERTIFICADOS DE CUMPLIMIENTO			REGISTRO DE CORPORACIONES			
(COGS Online)			(New Creations)			
2010	134		MONTH	PROFIT	NON-PROF	SUB-TOT
2011	4851		May-11	483	204	687
2012	18556		Jun-11	748	300	1,048
2013	26866		Jul-11	607	291	898
TOTALS	50407		Aug-11	640	240	880
			Sep-11	721	324	1,045
(New Creations by Class)			Oct-11	728	328	1,056
Class	%		Nov-11	638	275	913
Close Corporation	9.91%		Dec-11	598	208	806
Corporation	76.29%		Jan-12	796	342	1,138
Limited Liability Company	18.28%		Feb-12	795	372	1,167
Limited Liability Partnership	0.23%		Mar-12	881	342	1,223
Municipal Development	0.01%		Apr-12	744	317	1,061
Professional Corporation	5.16%		May-12	883	311	1,194
Special Employee Owned	0.04%		Jun-12	803	313	1,116
			Jul-12	662	275	937
			Aug-12	806	307	1,113
(Distribution of Hours)			Sep-12	771	288	1,059
Total Creations filed	33,164		Oct-12	854	302	1,156
Business hours (8-5)	23,346	70.4%	Nov-12	557	211	768
Off Business hours except SAT and	6,772	20.4%	Dec-12	603	233	836
SAT and SUN	3,046	9.2%	Jan-13	1,027	296	1,323
			Feb-13	795	387	1,182
			Mar-13	835	342	1,177
			Apr-13	879	373	1,252
			May-13	893	323	1,216
			Jun-13	784	292	1,076
			Jul-13	748	251	999
			Aug-13	925	319	1,244
			Sep-13	763	277	1,040
			Oct-13	777	284	1,061
			Nov-13	596	221	817
			Dec-13	428	138	566

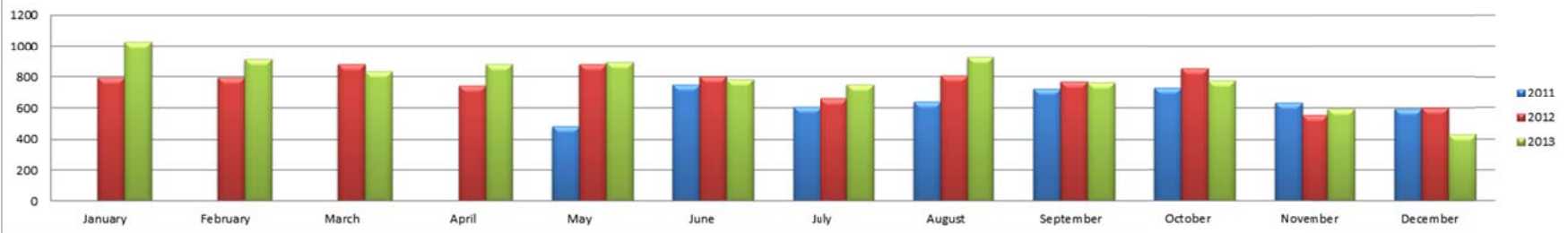
### Annual Reports / Annual Dues



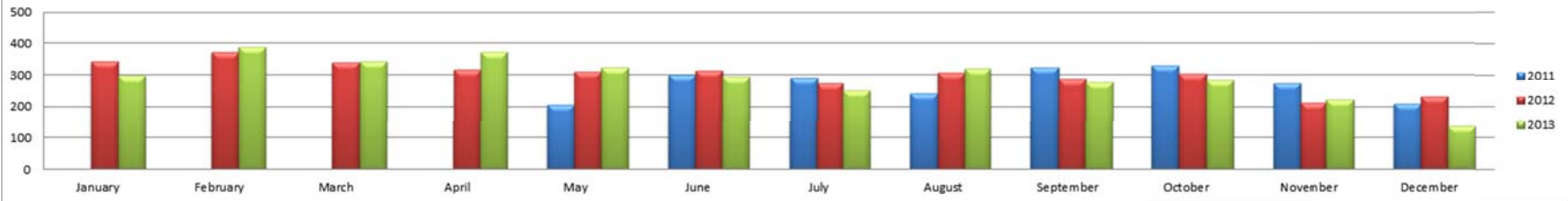
### Good Standings - Multi-Years Comparison



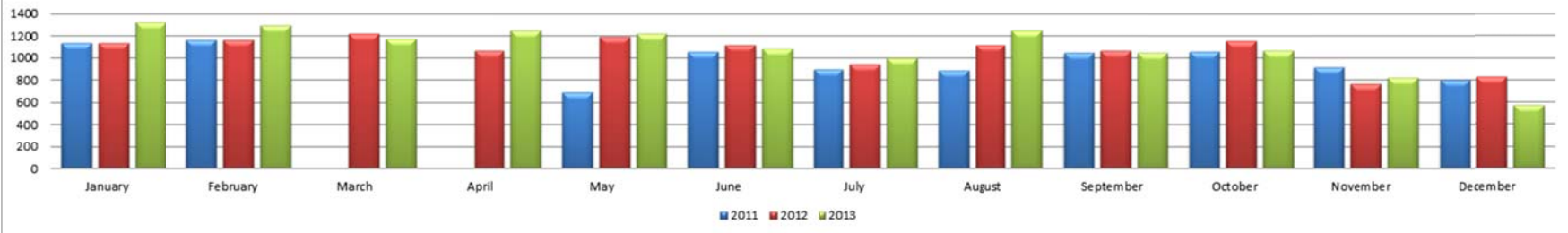
### For Profits New Creations



### Non-Profits New Creations

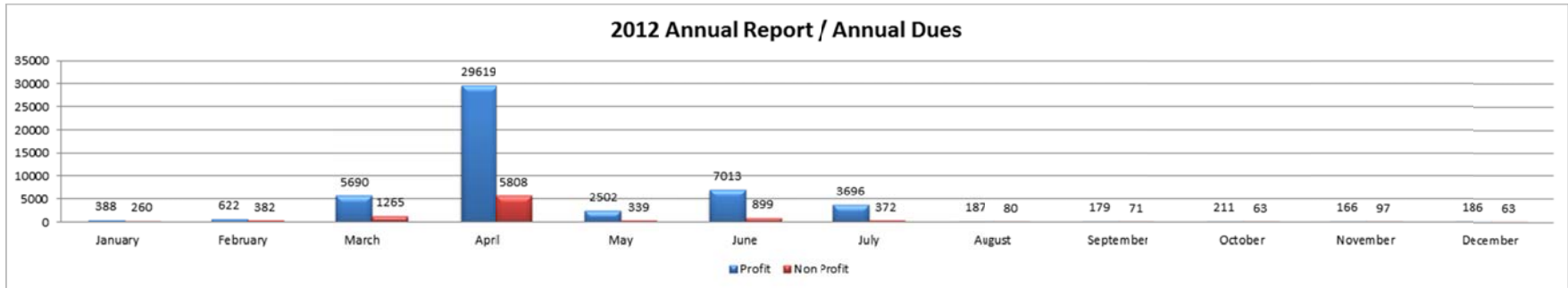
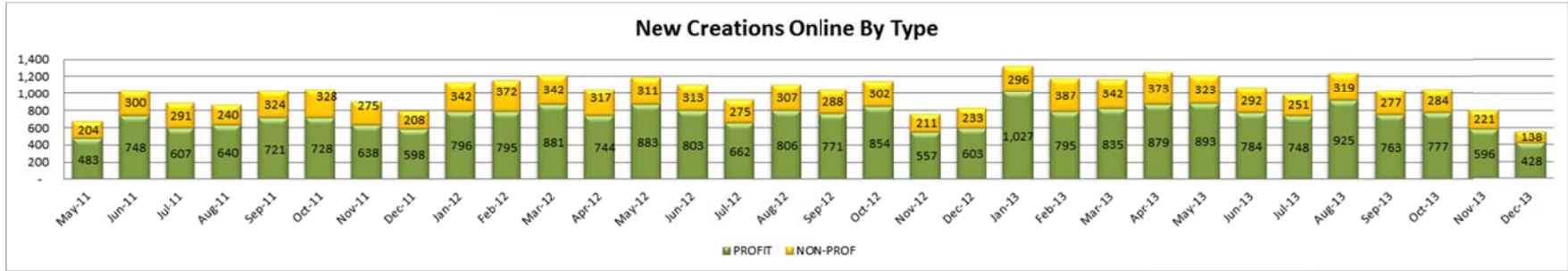
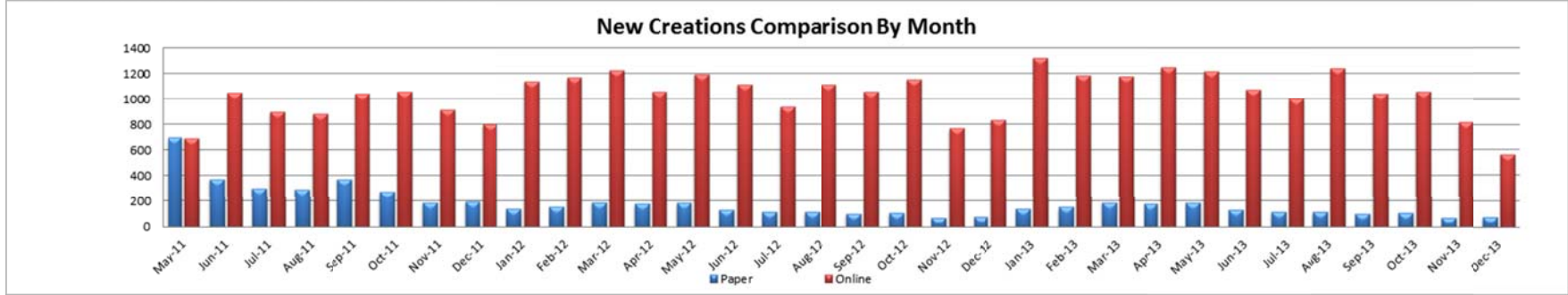


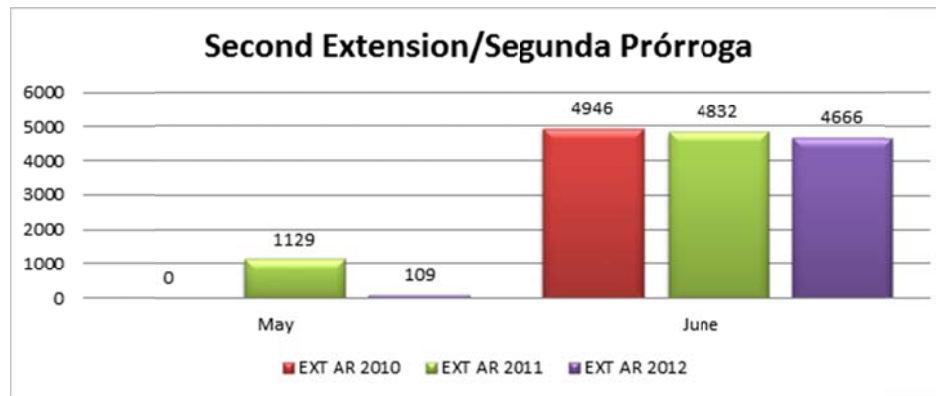
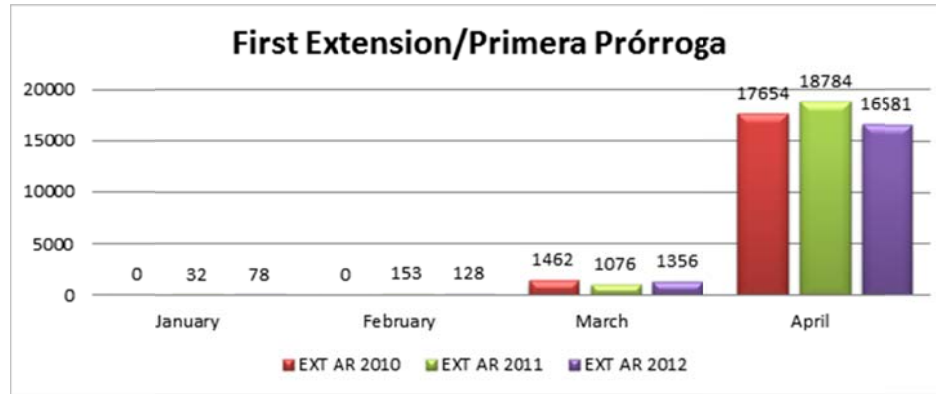
### Online New Creations



### COGS Online









**Carlos D. Serrano**  
Project Specialist / Technology Coordinator  
FileONE, LLC  
Email: [cserrano@fileoneinc.com](mailto:cserrano@fileoneinc.com)  
Tel 787.722.2121 Ext: 6252

Recibido: 19 de diciembre de 2013