



Estado Libre Asociado de Puerto Rico

Departamento de Estado

Informe estadístico del Registro de Corporaciones

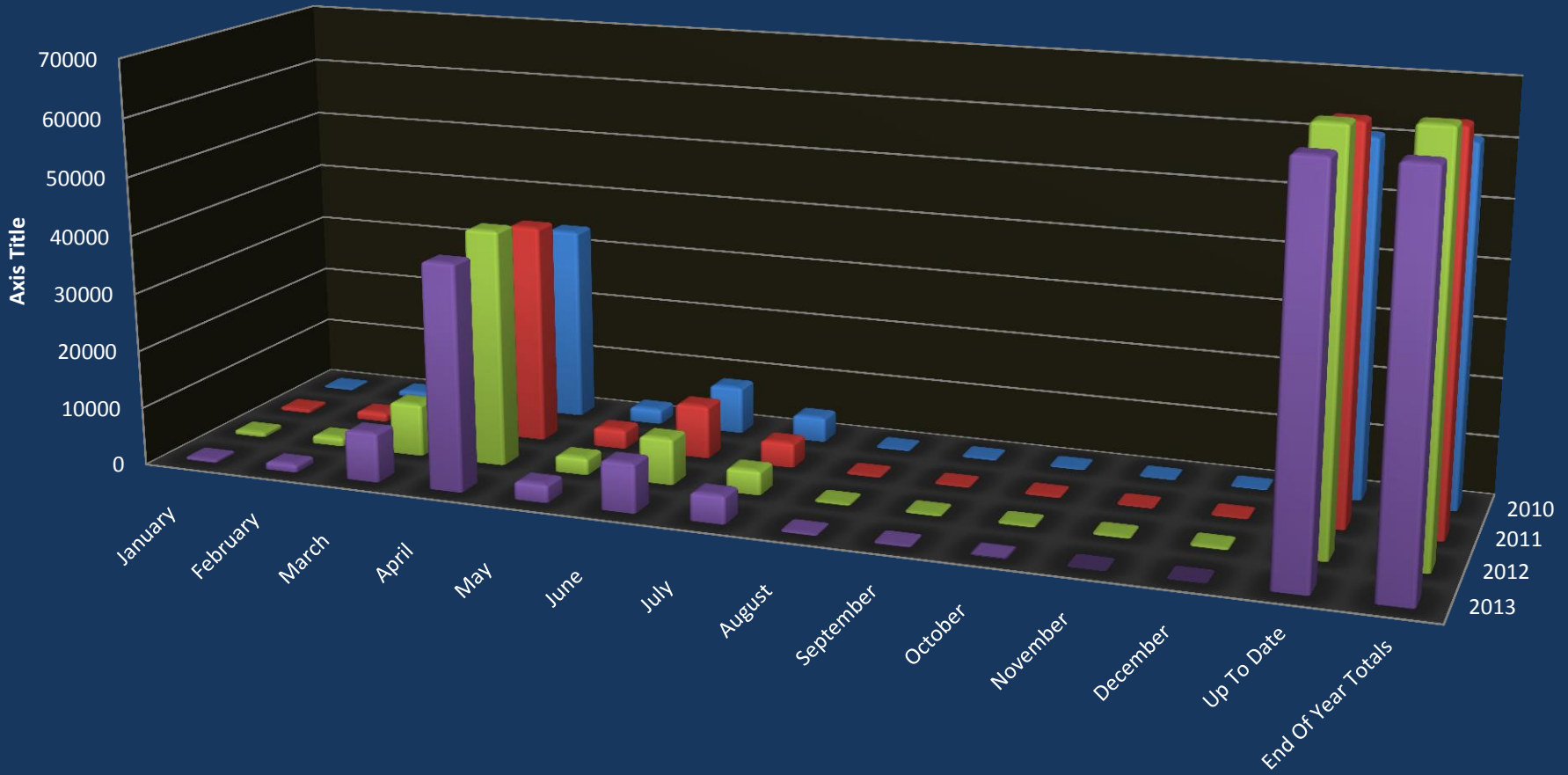
Data							
(Annual Reports/Annual Dues Comparison)							
YEAR	PROFIT	%	NON-PROFIT	%	LLC	%	TOTALS
2009	13,725	81%	2,431	14%	768	5%	16,924
2010	50,199	82%	9,250	15%	1,536	3%	60,985
2011	52,469	79%	10,494	16%	3,457	5%	66,420
2012	53,504	77%	10,878	16%	4,915	7%	69,297
2013	50,018	75%	10,109	15%	6,517	10%	66,644
DIFF:10-09	36,474	266%	6,819	281%	768	100%	44,061
DIFF:11-10	2,270	5%	1,244	13%	1,921	125%	5,435
DIFF:12-11	1,035	2%	384	4%	1,458	42%	2,877
DIFF:13-12	-3,486	-7%	-769	-7%	1,602	33%	-2,653

New Creations by Class		Distribution of Hours			
Class	%		Qty.	%	
CLOSE_CORPORATION	8.51%	Total Creations Filed		43,858	
CORPORATION	67.84%	Business hours (8-5)		30,887	70.4%
LIMITED_LIABILITY_COMPANY	18.89%	Off Business hours except SAT and SUN		8,966	20.4%
LIMITED_LIABILITY_PARTNERSHIP	0.24%	SAT and SUN		4,005	9.1%
MUNICIPAL_DEVELOPMENT	0.01%	Certificates of Good Standing			
PROFESSIONAL_CORPORATION	4.47%	Year	Paper	Online	Combined
SPECIAL_CORPORATIONS_FOR_MUNICIPAL	0.00%	2010	13,593	134	13,727
SPECIAL_EMPLOYEE_OWNED	0.03%	2011	13,304	4,851	18,155
TOTAL	100.00%	2012	5,116	18,554	23,670
		2013	3,037	27,242	30,279
		2014	1,546	28,735	30,281

Online New Creations				New Creations Comparison (Paper VS Online)			
Month-Year	For Profit	Non Profit	Sub Total	Month-Year	Online	Paper	Combined
May-11	483	204	687	May-11	687	697	1,384
Jun-11	748	300	1,048	Jun-11	1,048	375	1,423
Jul-11	607	291	898	Jul-11	898	303	1,201
Aug-11	640	240	880	Aug-11	880	289	1,169
Sep-11	721	324	1,045	Sep-11	1,045	371	1,416
Oct-11	728	328	1,056	Oct-11	1,056	272	1,328
Nov-11	638	275	913	Nov-11	913	189	1,102
Dec-11	597	208	805	Dec-11	805	196	1,001
Jan-12	796	342	1,138	Jan-12	1,138	138	1,276
Feb-12	795	372	1,167	Feb-12	1,167	155	1,322
Mar-12	884	339	1,223	Mar-12	1,223	189	1,412
Apr-12	744	317	1,061	Apr-12	1,061	177	1,238
May-12	883	311	1,194	May-12	1,194	186	1,380
Jun-12	803	313	1,116	Jun-12	1,116	134	1,250
Jul-12	662	275	937	Jul-12	937	115	1,052
Aug-12	806	307	1,113	Aug-12	1,113	115	1,228
Sep-12	770	288	1,058	Sep-12	1,058	103	1,161
Oct-12	854	302	1,156	Oct-12	1,156	105	1,261
Nov-12	556	211	767	Nov-12	767	71	838
Dec-12	600	233	833	Dec-12	833	77	910
Jan-13	1,027	296	1,323	Jan-13	1,323	116	1,439
Feb-13	910	387	1,297	Feb-13	1,297	104	1,401

Online New Creations				New Creations Comparison (Paper VS Online)			
Mar-13	835	342	1,177	Mar-13	1,177	115	1,292
Apr-13	879	373	1,252	Apr-13	1,252	153	1,405
May-13	893	323	1,216	May-13	1,216	144	1,360
Jun-13	784	292	1,076	Jun-13	1,076	116	1,192
Jul-13	748	251	999	Jul-13	999	105	1,104
Aug-13	925	319	1,244	Aug-13	1,244	123	1,367
Sep-13	763	277	1,040	Sep-13	1,040	98	1,138
Oct-13	777	284	1,061	Oct-13	1,061	111	1,172
Nov-13	596	221	817	Nov-13	817	100	917
Dec-13	600	188	788	Dec-13	788	108	896
Jan-14	849	301	1,150	Jan-14	1,150	117	1,267
Feb-14	773	275	1,048	Feb-14	1,048	124	1,172
Mar-14	906	333	1,239	Mar-14	1,239	106	1,345
Apr-14	769	319	1,088	Apr-14	1,088	87	1,175
May-14	918	293	1,211	May-14	1211	87	1,298
Jun-14	845	266	1,111	Jun-14	1111	106	1,217
Jul-14	737	248	985	Jul-14	985	71	1,056
Aug-14	814	264	1,078	Aug-14	1078	92	1,170
Sep-14	851	307	1,158	Sep-14	1158	159	1,317
Oct-14	329	89	418	Oct-14	418	51	469

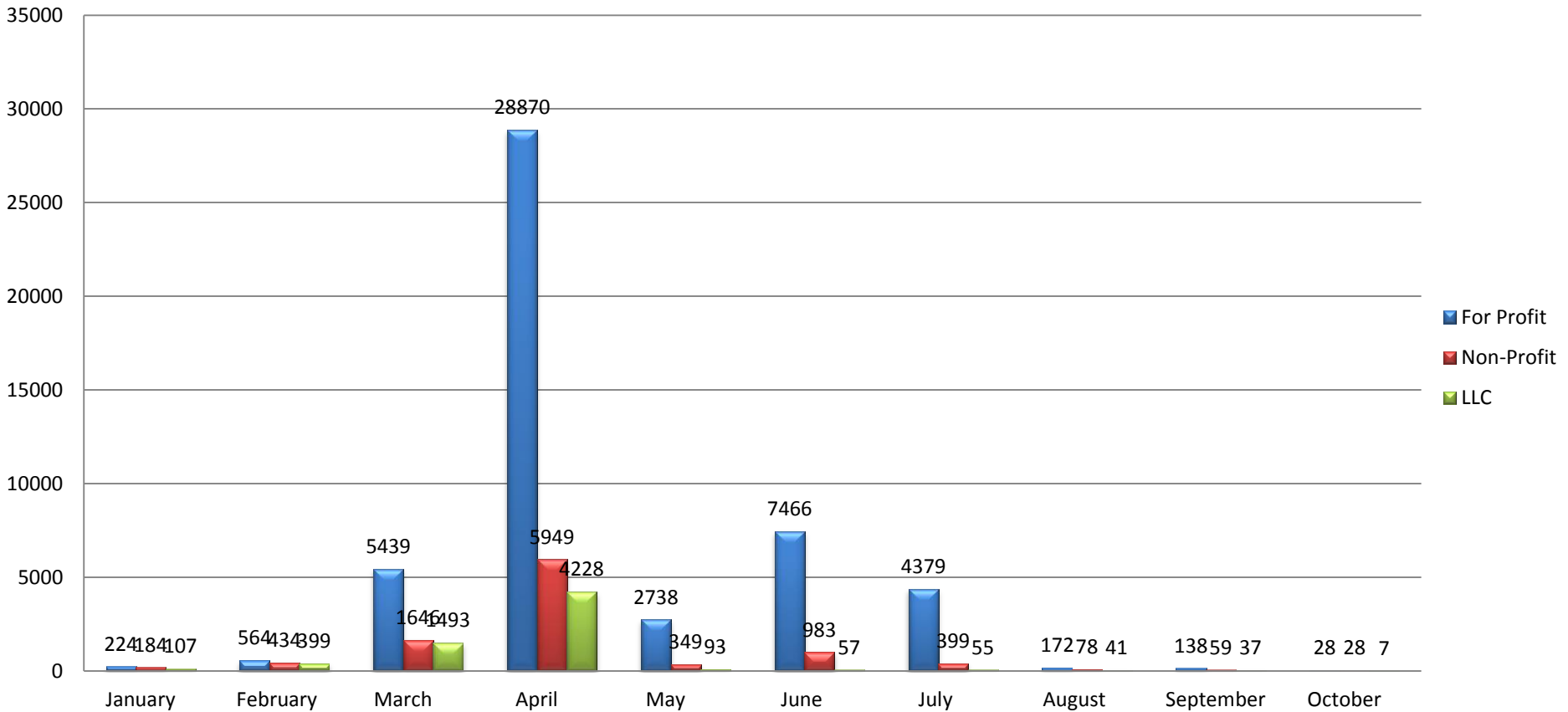
Multi Year Filing Season Comparison



	January	February	March	April	May	June	July	August	September	October	November	December	Up To Date	End Of Year Totals
2013	515	1397	8578	39047	3180	8506	4833	291	234	63	0	0	66644	66644
2012	800	1530	9115	40976	2940	8009	4158	345	336	339	341	408	68548	69297
2011	618	1507	8252	38106	3333	9218	4316	271	221	247	132	199	66089	66420
2010	266	971	9567	33932	2636	8230	4320	257	280	207	171	148	60666	60985

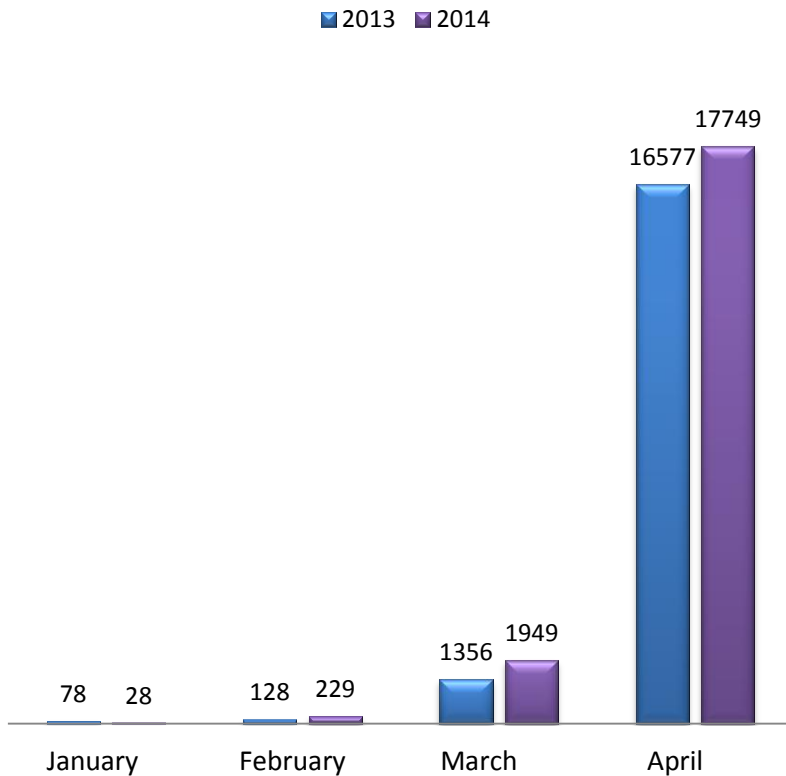
Current Filing Season

2013 Season - Annual Report/Due

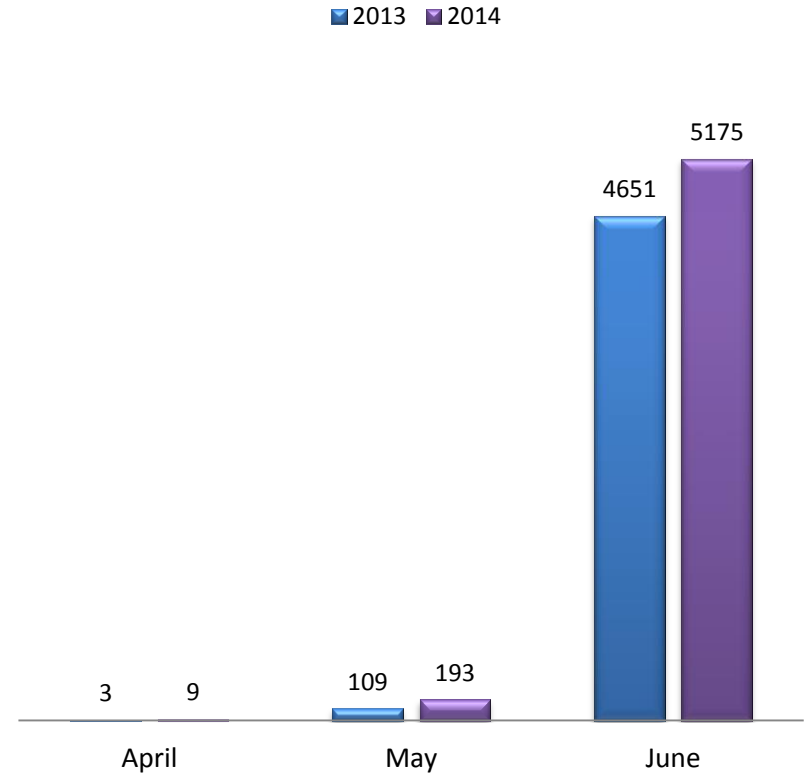


Extensions Two-Year Comparison

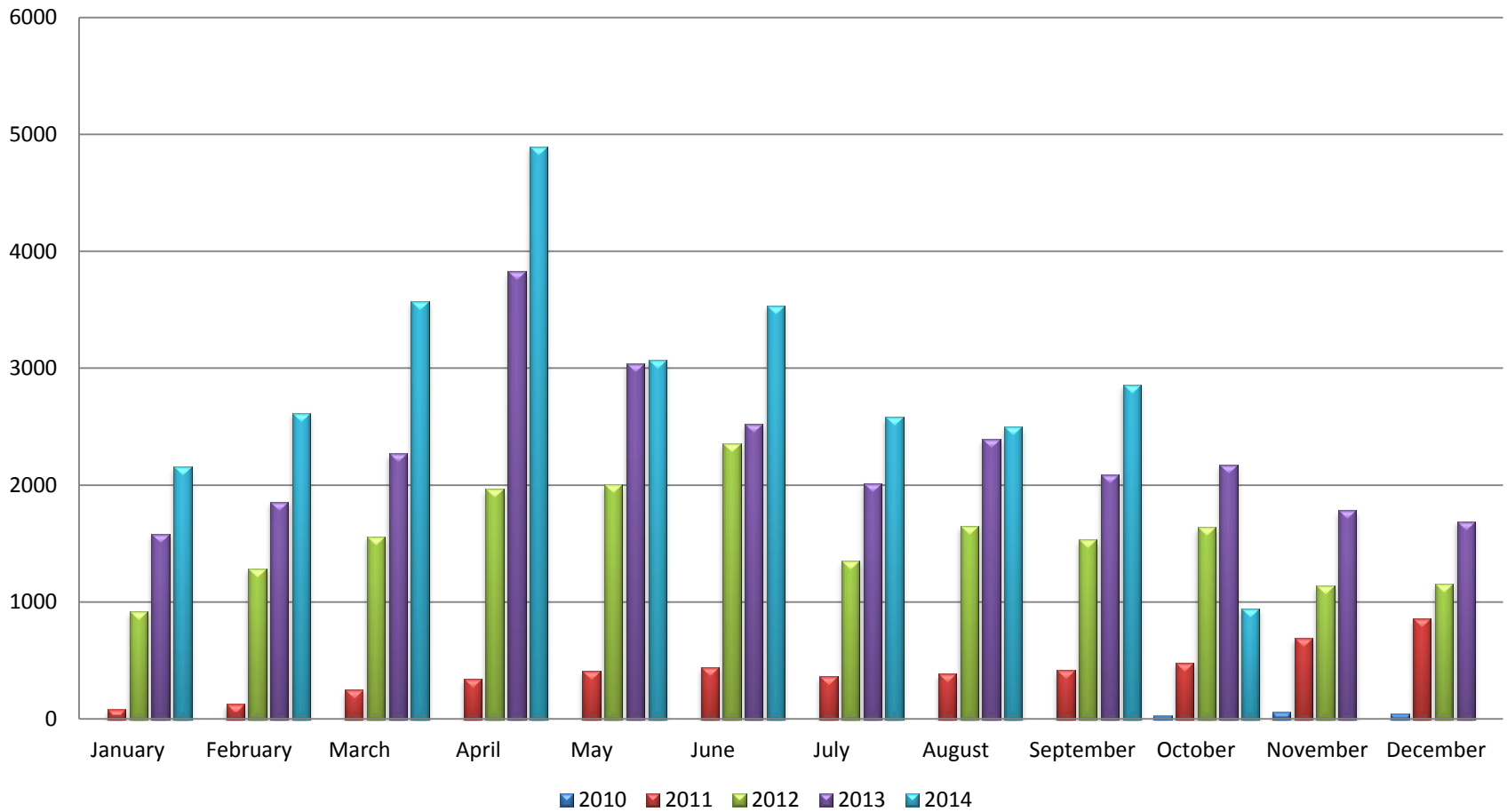
First Extension (Prórrogas) Two-Years Comparison



Second Extension (Prórrogas) Two-Years Comparison



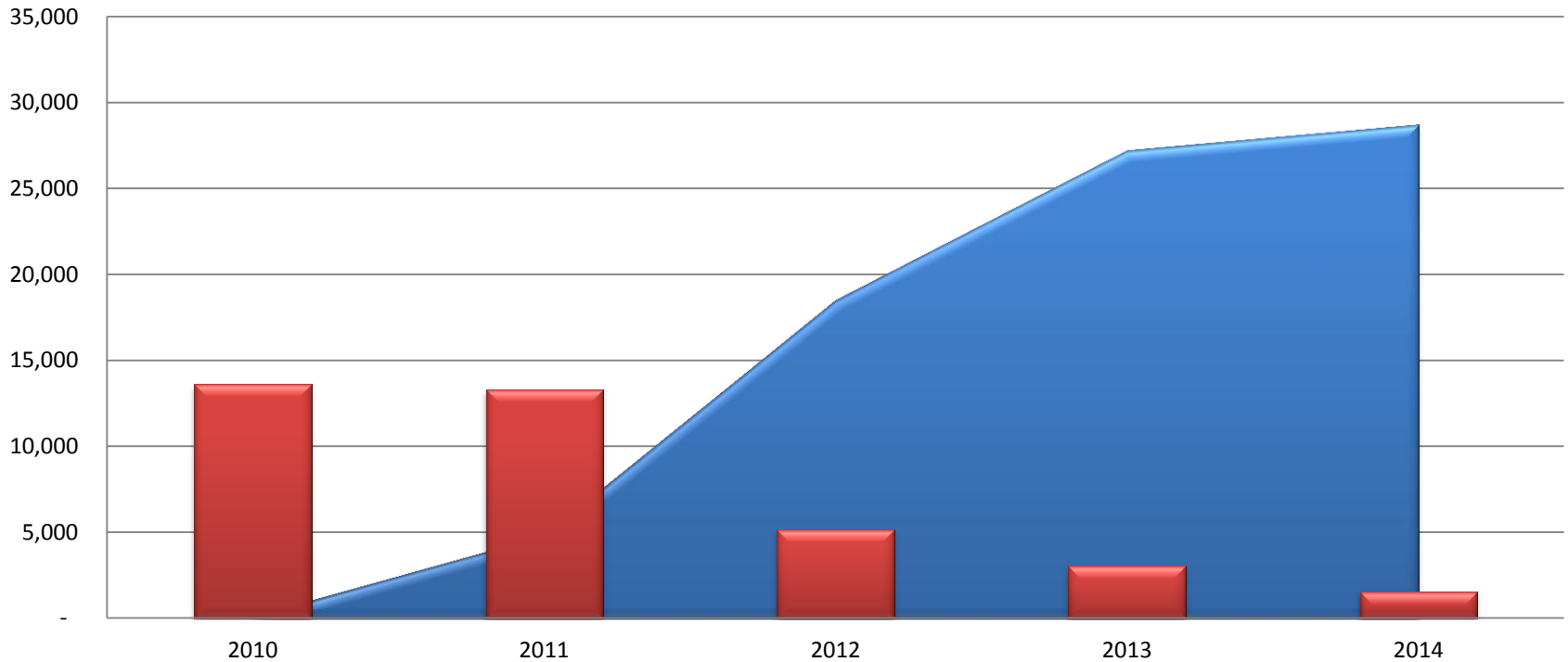
Online Certificates of Good Standings Multi-Years Comparison



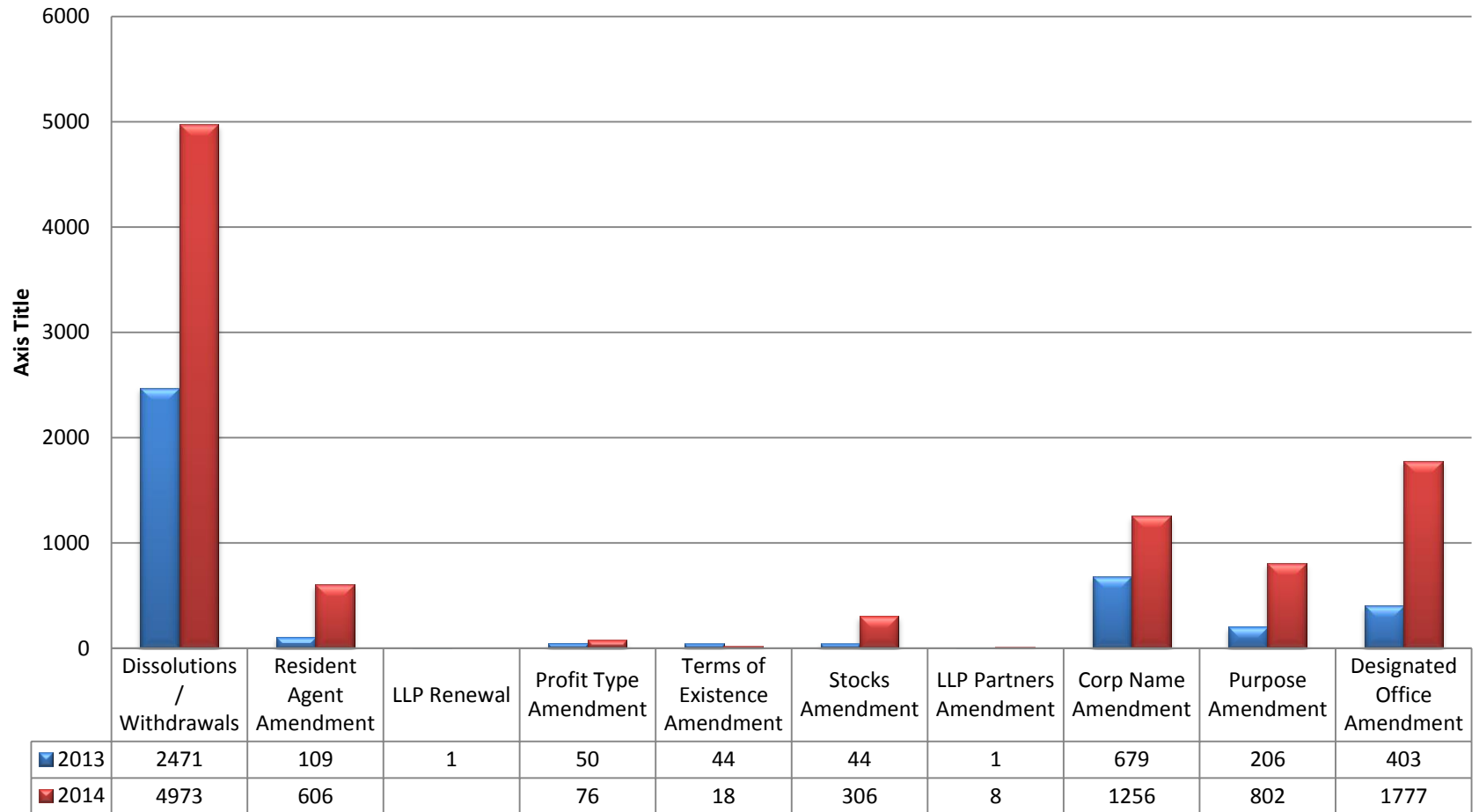
Certificates of Good Standings Comparison

Goodstanding Certificates Online vs Paper

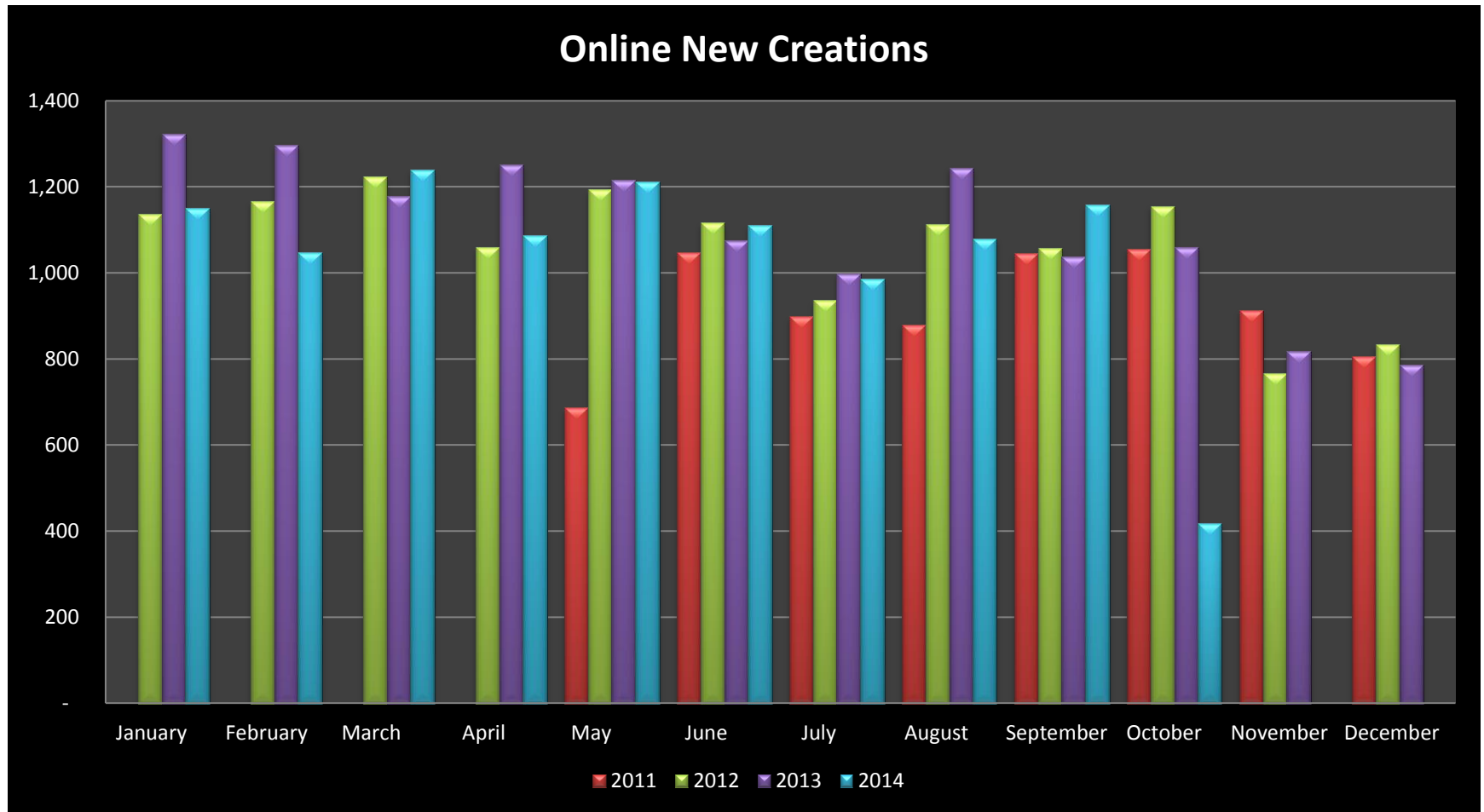
■ Online ■ Paper



Online Transactions

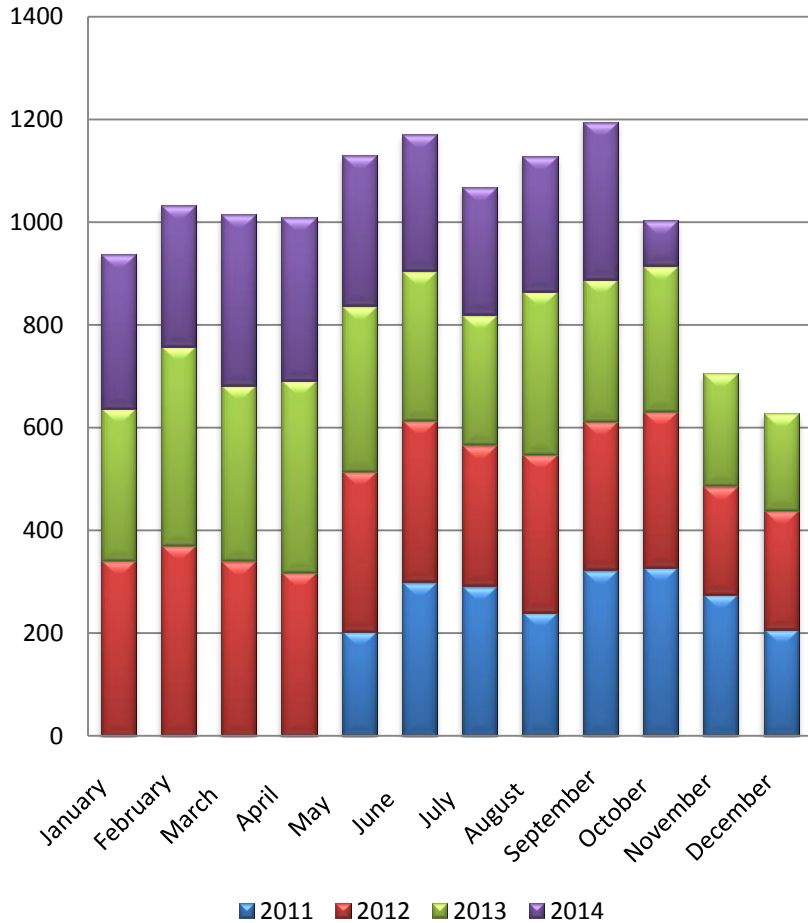


Multi-Years Online New Creations Trend

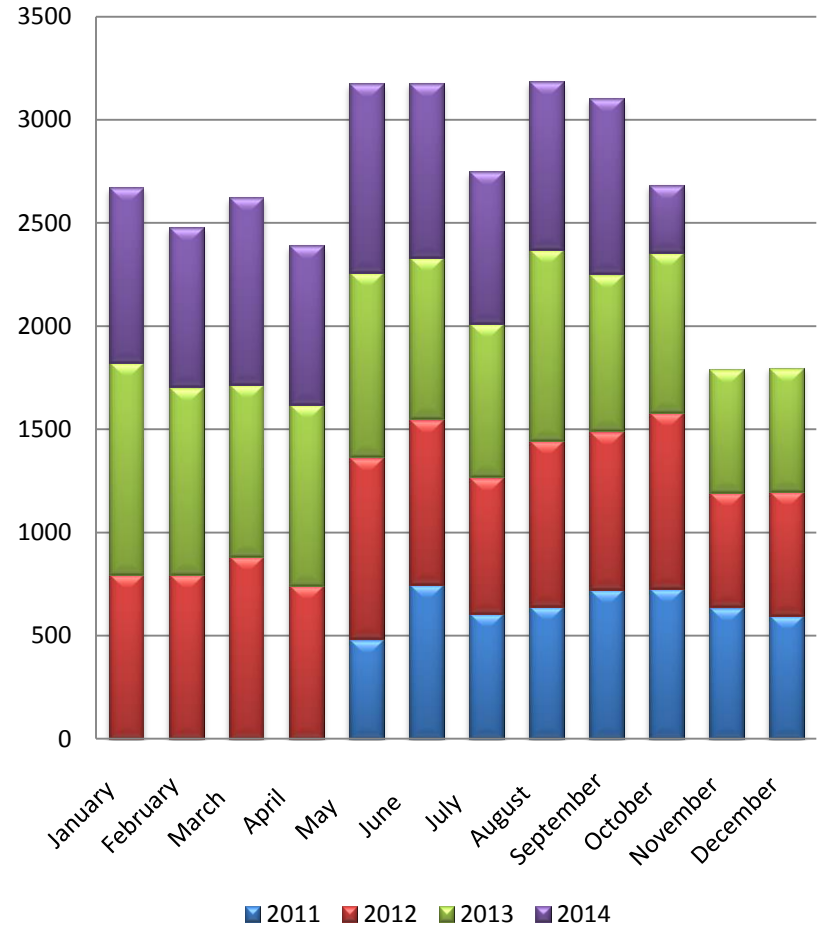


Online New Creations by Type

Non-Profits

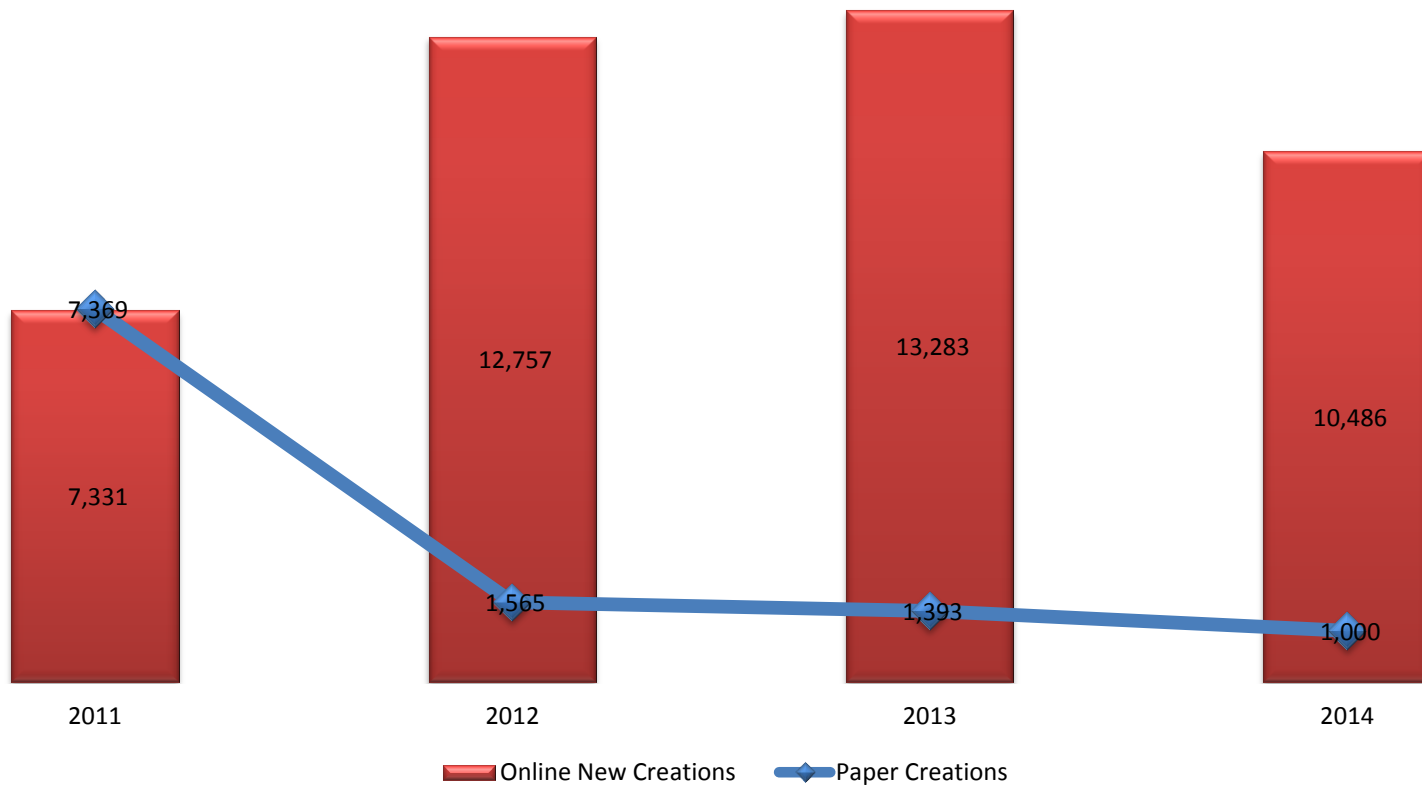


For Profits



New Creations Comparison

Online vs Paper New Creations





Enrique Rivera

FileONE, LLC

Email: erivera@fileoneinc.com

Tel. (919) 854-4123 Ext. 185

Recibido: 14 de octubre de 2014